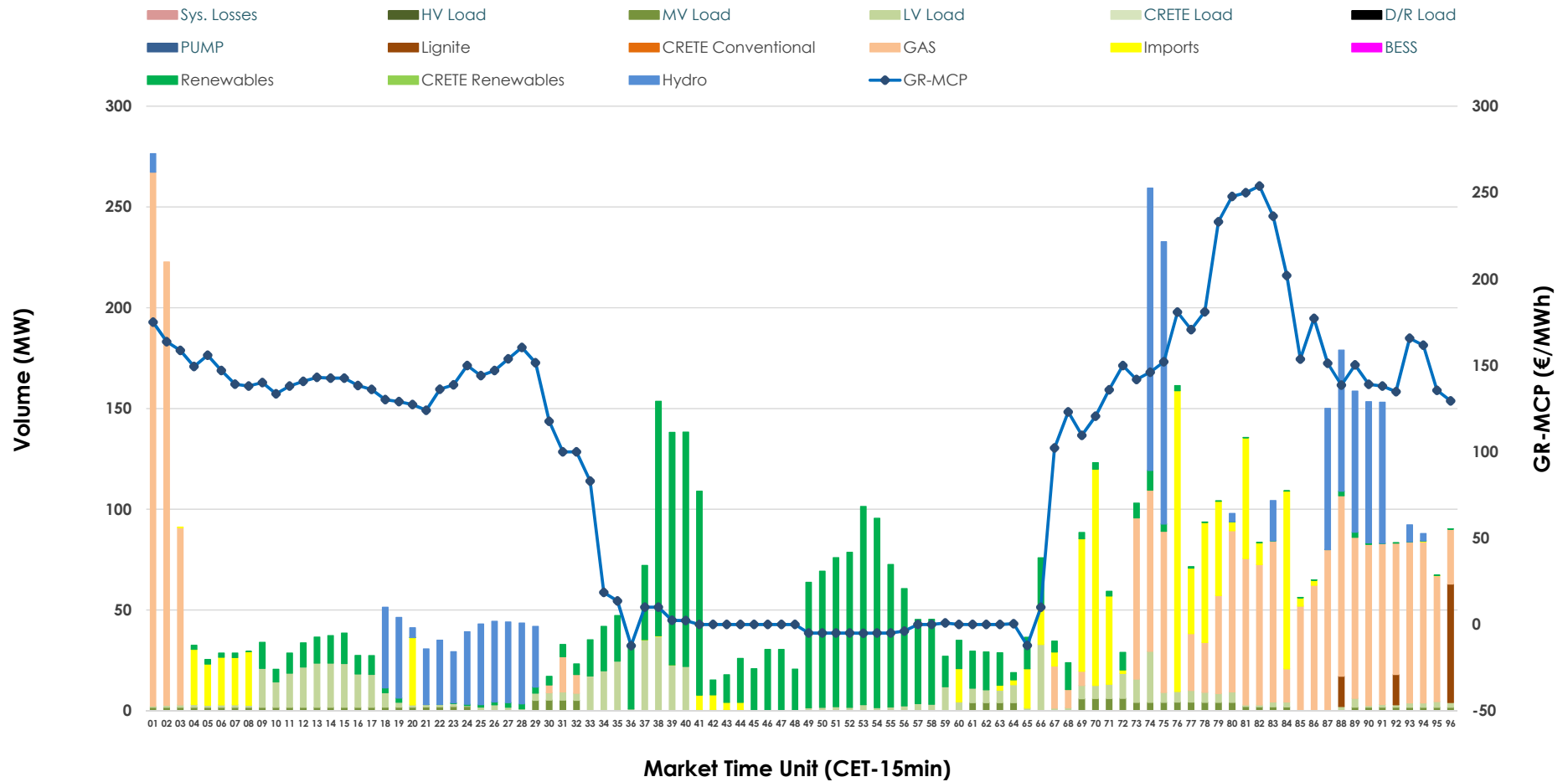


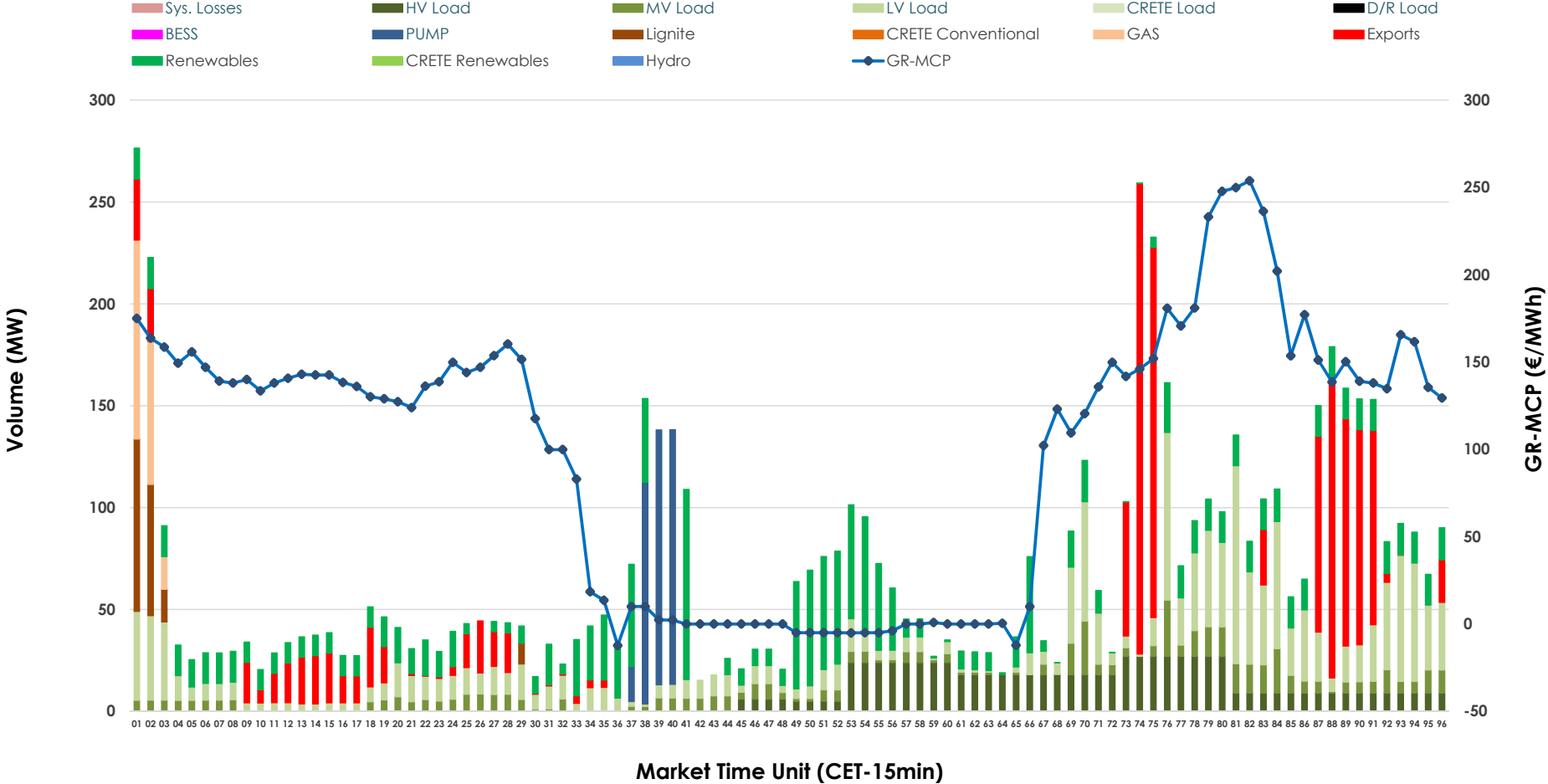


IDA '1' Market Outlook

05.05.2026 IDA '1' Market - Sell



05.05.2026 IDA '1' Market - Buy



GR Bidding Zone Weekly Figures

Delivery Day	29.04	30.04	01.05	02.05	03.05	04.05	05.05
	↗ 32%	↘ -14%	↘ -37%	↗ 9%	↗ 16%	↗ 49%	↘ -1%
Avg.MCP (€/MWh)	97.14	83.69	52.40	57.37	66.66	99.64	98.84
Max.MCP (€/MWh)	231.24	223.93	114.42	173.60	178.11	263.41	253.79
Min.MCP (€/MWh)	-5.00	-12.88	-19.99	-16.90	-11.25	-10.89	-12.30
	↘ -4%	↗ 35%	↗ 27%	↘ -49%	↗ 61%	↘ -15%	↗ 11%
Tot.Vol(GWh)	2.48	3.36	4.28	2.20	3.55	3.03	3.38

Trades by Order Type

Delivery Day		29.04	30.04	01.05	02.05	03.05	04.05	05.05	
Ord Price Type		Sell & Buy Trades in (GWh) per Price Type							(%)
PPT	(S)	0.000	0.000	0.000	0.000	0.000	0.000	0.000	0.00%
HBD	(S)	1.061	1.345	0.790	0.925	1.500	1.385	1.457	86.32%
BLK	(S)	0.000	0.000	0.000	0.000	0.000	0.000	0.000	0.00%
CPL	(S)	0.181	0.334	1.351	0.176	0.275	0.132	0.231	13.68%
PPT	(B)	0.000	0.000	0.000	0.000	0.000	0.000	0.000	0.00%
HBD	(B)	1.112	1.102	2.090	1.016	1.624	1.216	1.327	78.60%
BLK	(B)	0.000	0.000	0.000	0.000	0.000	0.000	0.000	0.00%
CPL	(B)	0.130	0.577	0.051	0.084	0.151	0.301	0.361	21.40%
		Sell & Buy Orders Traded per Price Type							(%)
PPT	(S)	0	0	0	0	0	0	0	0.00%
HBD	(S)	305	258	385	389	340	415	362	100.00%
BLK	(S)	0	0	0	0	0	0	0	0.00%
PPT	(B)	0	0	0	0	0	0	0	0.00%
HBD	(B)	630	759	691	1017	793	644	763	100.00%
BLK	(B)	0	0	0	0	0	0	0	0.00%

- MCP** Market Clearing Price (€/MWh)
- PPT** Priority Price-Taking
- HBD** Hybrid
- BLK** Block
- CPL** Market Coupling Flow

Trade's Volume Mix

		Sell - MWh		Buy - MWh	
Lignite	(1.3%)	22	44		(2.6%)
Crete Conv.	(0.0%)	0	0		(0.0%)
Gas	(31.7%)	535	46		(2.7%)
Hydro	(15.9%)	268	0		(0.0%)
Imports	(13.7%)	231			
RES	(25.8%)	436	402		(23.8%)
Crete RES	(0.0%)	0	0		(0.0%)
BESS	(0.0%)	0	0		(0.0%)
HV Load	(0.0%)	0	203		(12.0%)
MV Load	(2.4%)	40	135		(8.0%)
LV Load	(9.3%)	156	404		(23.9%)
Crete Load	(0.0%)	0	0		(0.0%)
Pumping	(0.0%)	0	94		(5.6%)
Exports			361		(21.4%)
Sys.Losses	(0.0%)	0	0		(0.0%)
D/R Load	(0.0%)	0	0		(0.0%)

