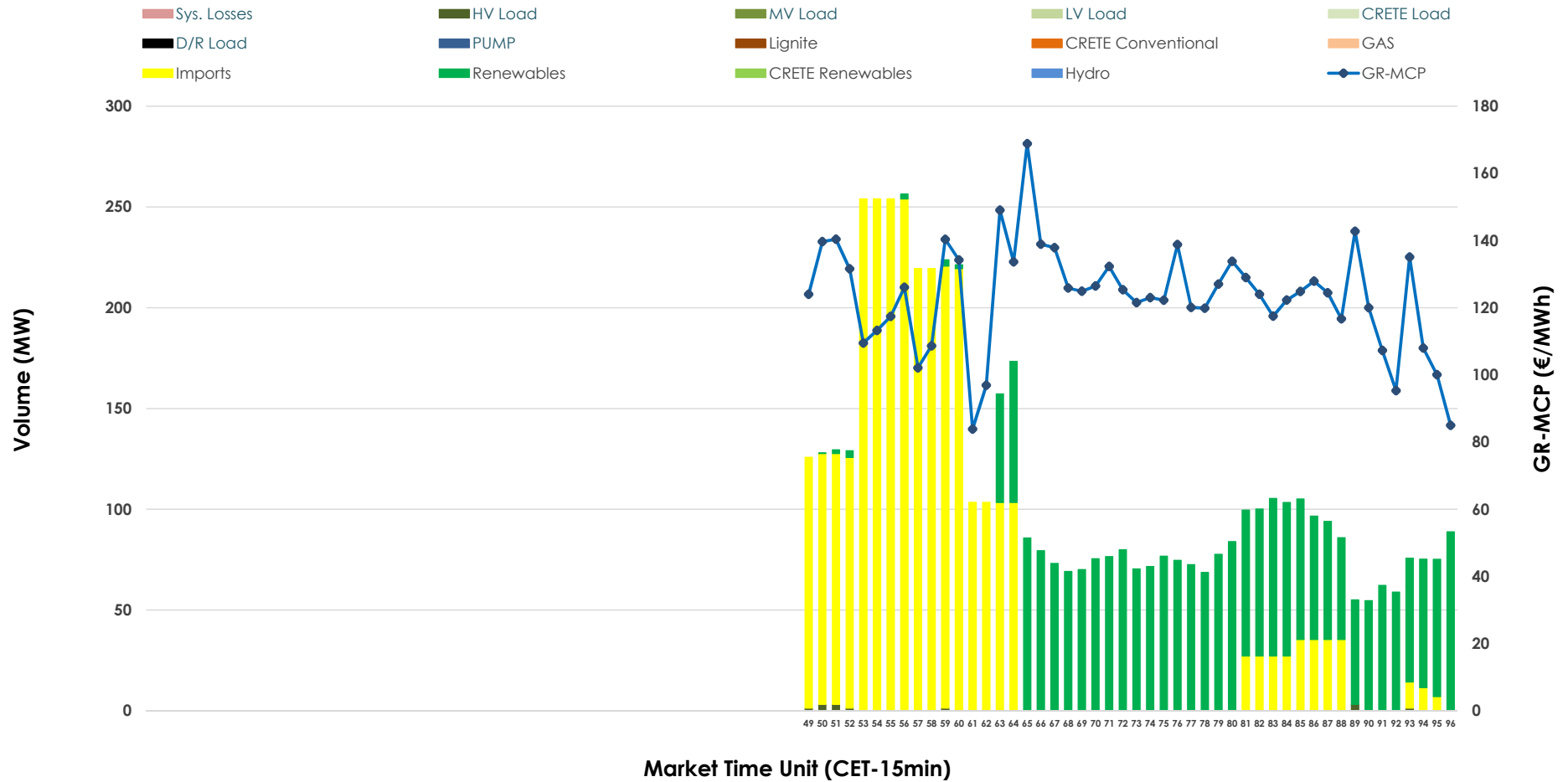


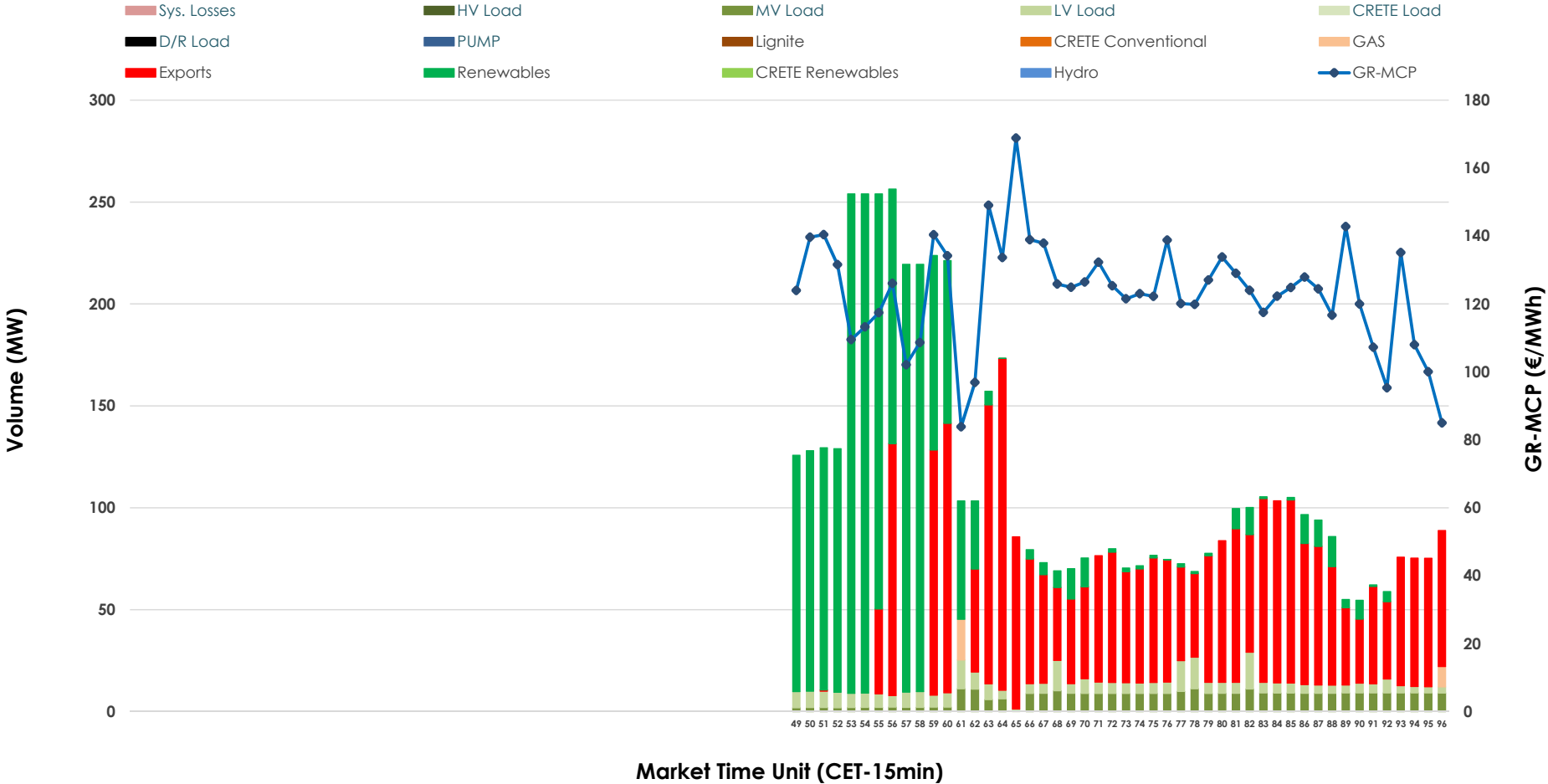


# IDA '3' Market Outlook

21.12.2025 IDA '3' Market - Sell



### 21.12.2025 IDA '3' Market - Buy



### GR Bidding Zone Weekly Figures

Delivery Day	15.12	16.12	17.12	18.12	19.12	20.12	21.12
	↑ 38%	↔ 8%	↓ -16%	↑ 51%	↓ -35%	↔ -12%	↔ 3%
<b>Avg.MCP (€/MWh)</b>	153.22	165.56	138.60	209.50	136.53	120.03	123.29
<b>Max.MCP (€/MWh)</b>	249.84	280.15	206.35	341.53	291.46	146.12	168.82
<b>Min.MCP (€/MWh)</b>	52.50	83.40	80.85	94.35	46.02	91.29	83.86
	↓ -40%	↔ -17%	↑ 230%	↔ -33%	↔ 14%	↑ 48%	↔ -13%
<b>Tot.Vol(GWh)</b>	1.01	0.84	2.78	1.87	2.14	3.16	2.75

### Trades by Order Type

Delivery Day		15.12	16.12	17.12	18.12	19.12	20.12	21.12	
<b>Ord Price Type</b>		<b>Sell &amp; Buy Trades in (GWh) per Price Type</b>							<b>(%)</b>
<b>PPT</b>	(S)	0.000	0.000	0.000	0.000	0.000	0.000	0.000	0.00%
<b>HBD</b>	(S)	0.479	0.337	1.019	0.614	0.692	0.168	0.601	43.80%
<b>BLK</b>	(S)	0.000	0.000	0.000	0.000	0.000	0.000	0.000	0.00%
<b>CPL</b>	(S)	0.029	0.085	0.373	0.321	0.379	1.411	0.772	56.20%
<b>PPT</b>	(B)	0.000	0.000	0.000	0.000	0.000	0.000	0.000	0.00%
<b>HBD</b>	(B)	0.404	0.374	1.325	0.770	1.048	0.920	0.704	51.30%
<b>BLK</b>	(B)	0.000	0.000	0.000	0.000	0.000	0.000	0.000	0.00%
<b>CPL</b>	(B)	0.103	0.048	0.067	0.165	0.023	0.659	0.669	48.70%
		<b>Sell &amp; Buy Orders Traded per Price Type</b>							<b>(%)</b>
<b>PPT</b>	(S)	0	0	0	0	0	0	0	0.00%
<b>HBD</b>	(S)	50	48	142	87	260	161	89	100.00%
<b>BLK</b>	(S)	0	0	0	0	0	0	0	0.00%
<b>PPT</b>	(B)	0	0	0	0	0	0	0	0.00%
<b>HBD</b>	(B)	165	208	241	119	148	179	207	100.00%
<b>BLK</b>	(B)	0	0	0	0	0	0	0	0.00%

**MCP** Market Clearing Price (€/MWh)  
**PPT** Priority Price-Taking  
**HBD** Hybrid  
**BLK** Block  
**CPL** Market Coupling Flow

### Trade's Volume Mix

		Sell - MWh	Buy - MWh	
<b>Lignite</b>	(0.0%)	0	0	(0.0%)
<b>Crete Conv.</b>	(0.0%)	0	0	(0.0%)
<b>Gas</b>	(0.0%)	0	8	(0.5%)
<b>Hydro</b>	(0.0%)	0	0	(0.0%)
<b>Imports</b>	(56.2%)	772		
<b>RES</b>	(43.5%)	598	532	(38.7%)
<b>Crete RES</b>	(0.0%)	0	0	(0.0%)
<b>HV Load</b>	(0.3%)	4	0	(0.0%)
<b>MV Load</b>	(0.0%)	0	86	(6.3%)
<b>LV Load</b>	(0.0%)	0	79	(5.7%)
<b>Crete Load</b>	(0.0%)	0	0	(0.0%)
<b>Pumping</b>	(0.0%)	0	0	(0.0%)
<b>Exports</b>			669	(48.7%)
<b>Sys.Losses</b>	(0.0%)	0	0	(0.0%)
<b>D/R Load</b>	(0.0%)	0	0	(0.0%)

