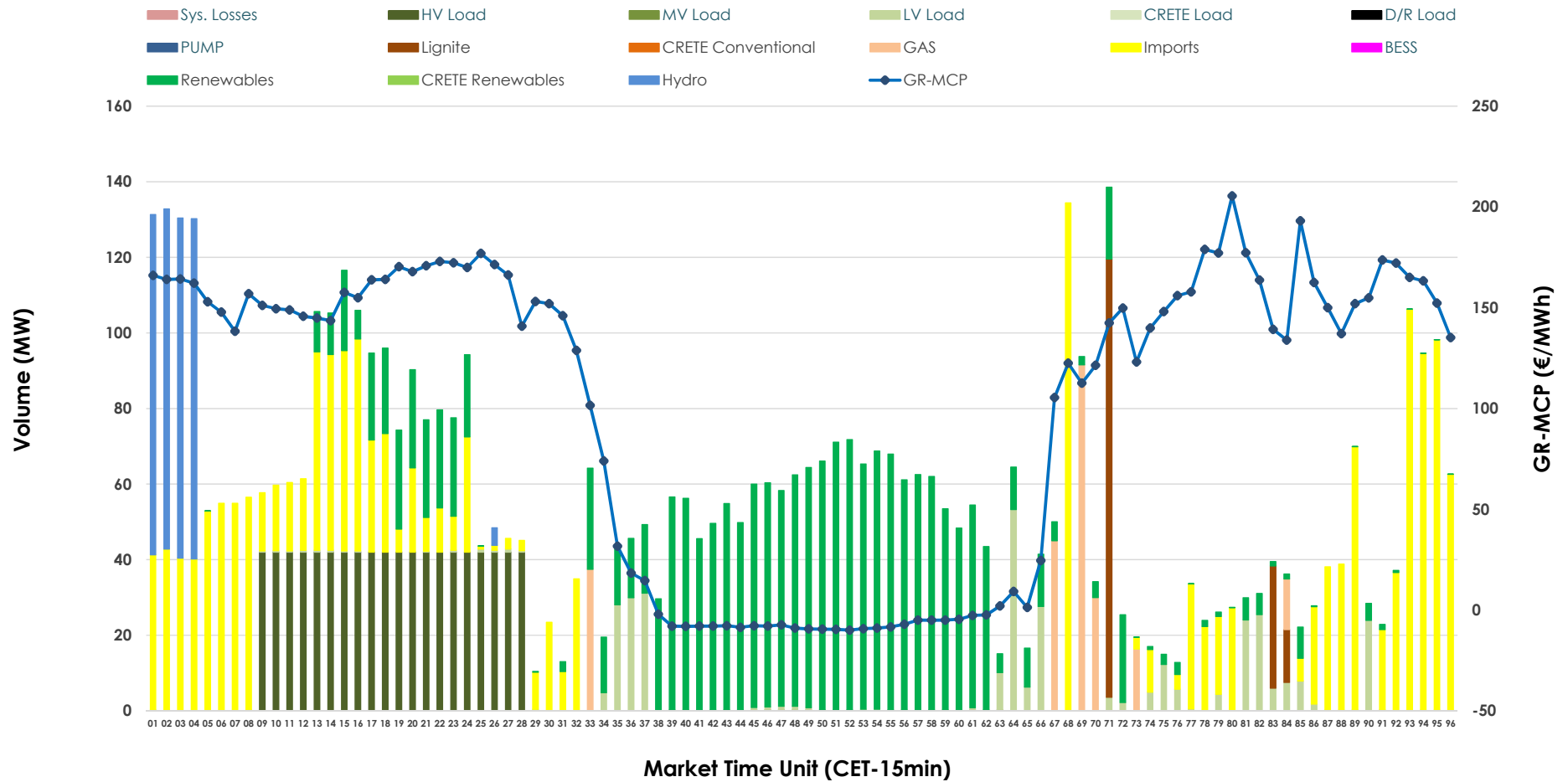


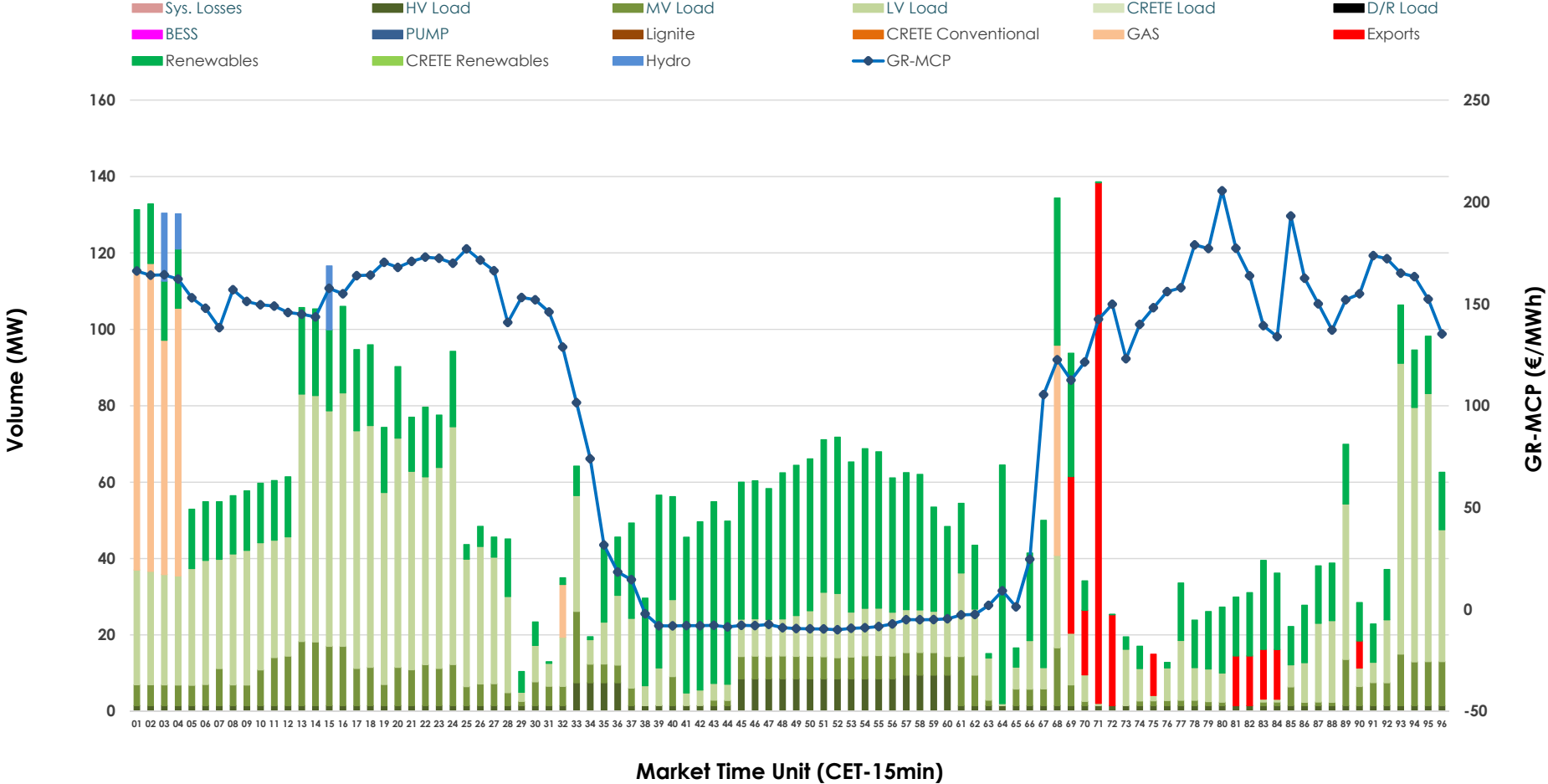


# IDA '1' Market Outlook

06.05.2026 IDA '1' Market - Sell



### 06.05.2026 IDA '1' Market - Buy



### GR Bidding Zone Weekly Figures

Delivery Day	30.04	01.05	02.05	03.05	04.05	05.05	06.05
	👇 -14%	👇 -37%	👉 9%	👉 16%	👆 49%	👉 -1%	👉 2%
<b>Avg.MCP (€/MWh)</b>	83.69	52.40	57.37	66.66	99.64	98.84	101.05
<b>Max.MCP (€/MWh)</b>	223.93	114.42	173.60	178.11	263.41	253.79	205.48
<b>Min.MCP (€/MWh)</b>	-12.88	-19.99	-16.90	-11.25	-10.89	-12.30	-9.97
	👆 35%	👉 27%	👇 -49%	👆 61%	👇 -15%	👉 11%	👇 -17%
<b>Tot.Vol(GWh)</b>	3.36	4.28	2.20	3.55	3.03	3.38	2.80

### Trades by Order Type

Delivery Day		30.04	01.05	02.05	03.05	04.05	05.05	06.05	
<b>Ord Price Type</b>		<b>Sell &amp; Buy Trades in (GWh) per Price Type</b>							<b>(%)</b>
<b>PPT</b>	(S)	0.000	0.000	0.000	0.000	0.000	0.000	0.000	0.00%
<b>HBD</b>	(S)	1.345	0.790	0.925	1.500	1.385	1.457	0.962	68.69%
<b>BLK</b>	(S)	0.000	0.000	0.000	0.000	0.000	0.000	0.000	0.00%
<b>CPL</b>	(S)	0.334	1.351	0.176	0.275	0.132	0.231	0.439	31.31%
<b>PPT</b>	(B)	0.000	0.000	0.000	0.000	0.000	0.000	0.000	0.00%
<b>HBD</b>	(B)	1.102	2.090	1.016	1.624	1.216	1.327	1.329	94.86%
<b>BLK</b>	(B)	0.000	0.000	0.000	0.000	0.000	0.000	0.000	0.00%
<b>CPL</b>	(B)	0.577	0.051	0.084	0.151	0.301	0.361	0.072	5.14%
		<b>Sell &amp; Buy Orders Traded per Price Type</b>							<b>(%)</b>
<b>PPT</b>	(S)	0	0	0	0	0	0	0	0.00%
<b>HBD</b>	(S)	258	385	389	340	415	362	155	100.00%
<b>BLK</b>	(S)	0	0	0	0	0	0	0	0.00%
<b>PPT</b>	(B)	0	0	0	0	0	0	0	0.00%
<b>HBD</b>	(B)	759	691	1017	793	644	763	823	100.00%
<b>BLK</b>	(B)	0	0	0	0	0	0	0	0.00%

- MCP** Market Clearing Price (€/MWh)
- PPT** Priority Price-Taking
- HBD** Hybrid
- BLK** Block
- CPL** Market Coupling Flow

### Trade's Volume Mix

	Sell - MWh	Buy - MWh	
<b>Lignite</b> (2.9%)	41	0	(0.0%)
<b>Crete Conv.</b> (0.0%)	0	0	(0.0%)
<b>Gas</b> (4.2%)	58	90	(6.4%)
<b>Hydro</b> (6.5%)	91	11	(0.8%)
<b>Imports</b> (31.3%)	439		
<b>RES</b> (34.0%)	477	484	(34.6%)
<b>Crete RES</b> (0.0%)	0	0	(0.0%)
<b>BESS</b> (0.0%)	0	0	(0.0%)
<b>HV Load</b> (15.0%)	210	71	(5.1%)
<b>MV Load</b> (0.1%)	2	140	(10.0%)
<b>LV Load</b> (6.0%)	84	533	(38.0%)
<b>Crete Load</b> (0.0%)	0	0	(0.0%)
<b>Pumping</b> (0.0%)	0	0	(0.0%)
<b>Exports</b>		72	(5.1%)
<b>Sys.Losses</b> (0.0%)	0	0	(0.0%)
<b>D/R Load</b> (0.0%)	0	0	(0.0%)

