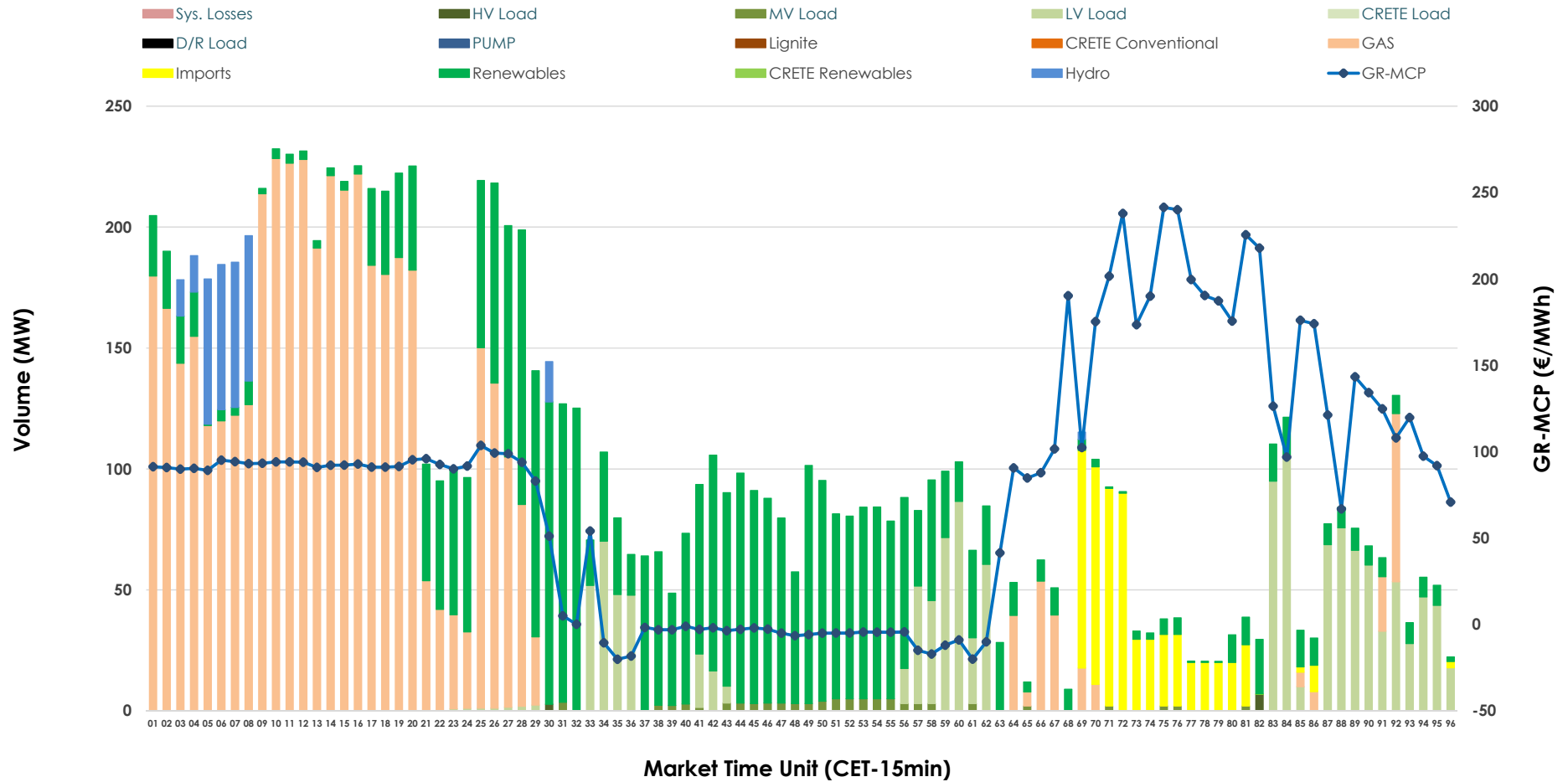


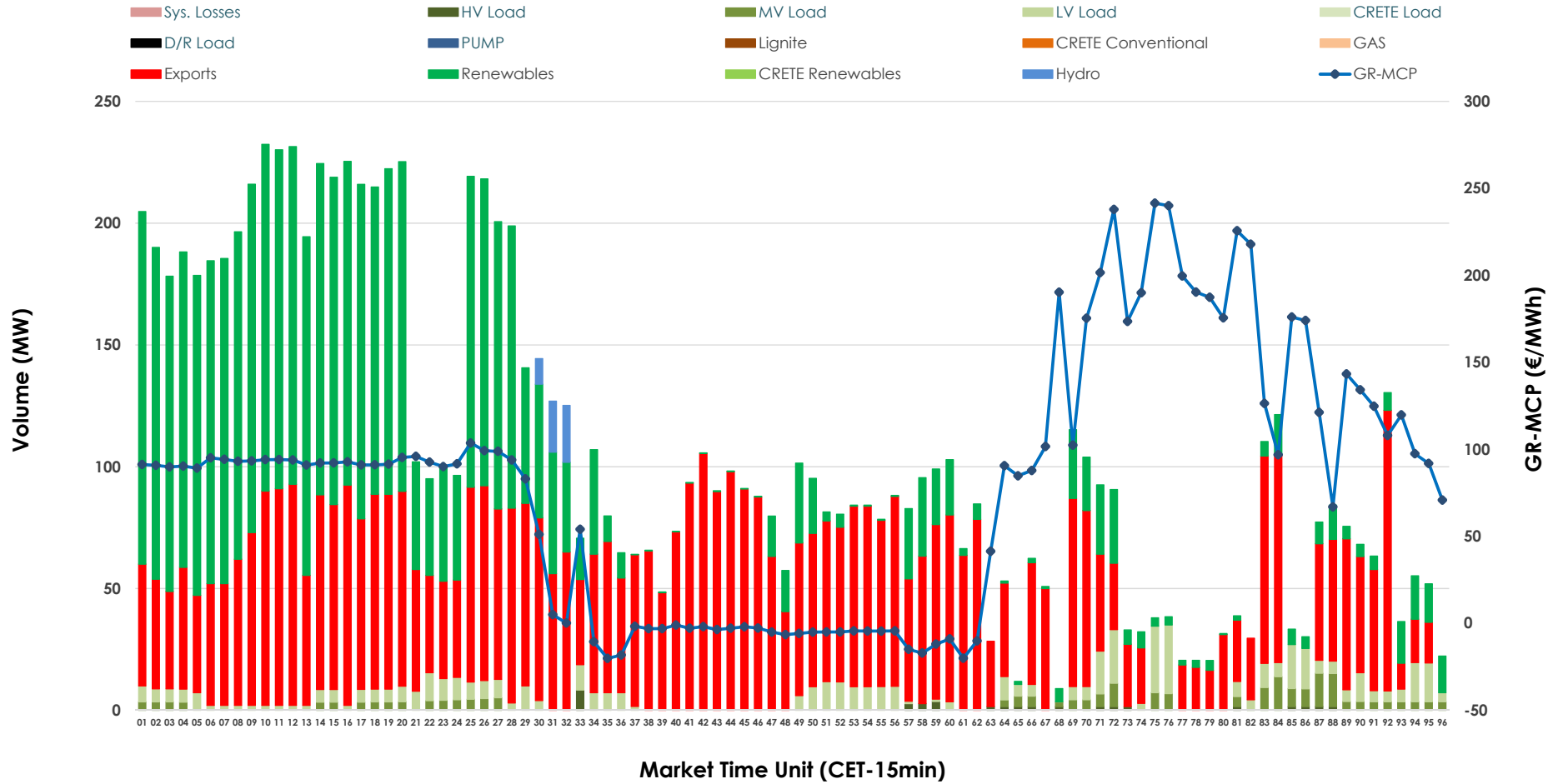


# IDA '2' Market Outlook

10.03.2026 IDA '2' Market - Sell



### 10.03.2026 IDA '2' Market - Buy



### GR Bidding Zone Weekly Figures

Delivery Day	04.03	05.03	06.03	07.03	08.03	09.03	10.03
	👇 -13%	👆 3%	👇 -18%	👆 1%	👇 -5%	👆 6%	👇 -2%
<b>Avg.MCP (€/MWh)</b>	94.68	97.40	79.46	80.40	76.18	80.76	79.21
<b>Max.MCP (€/MWh)</b>	263.83	207.30	210.88	165.43	151.84	243.16	241.49
<b>Min.MCP (€/MWh)</b>	-7.85	4.08	-22.00	-20.95	-15.92	-12.08	-20.20
	👇 -25%	👇 -13%	👆 28%	👆 42%	👇 -9%	👆 17%	👇 -8%
<b>Tot.Vol(GWh)</b>	3.33	2.89	3.70	5.27	4.80	5.63	5.15

### Trades by Order Type

Delivery Day		04.03	05.03	06.03	07.03	08.03	09.03	10.03	
<b>Ord Price Type</b>		<b>Sell &amp; Buy Trades in (GWh) per Price Type</b>							<b>(%)</b>
<b>PPT</b>	(S)	0.000	0.000	0.000	0.000	0.000	0.000	0.000	0.00%
<b>HBD</b>	(S)	1.325	0.976	1.168	2.449	2.243	2.807	2.427	94.18%
<b>BLK</b>	(S)	0.000	0.000	0.000	0.000	0.000	0.000	0.000	0.00%
<b>CPL</b>	(S)	0.338	0.469	0.684	0.188	0.158	0.009	0.150	5.82%
<b>PPT</b>	(B)	0.000	0.000	0.000	0.000	0.000	0.000	0.000	0.00%
<b>HBD</b>	(B)	1.525	1.145	1.085	2.455	2.050	1.503	1.250	48.50%
<b>BLK</b>	(B)	0.000	0.000	0.000	0.000	0.000	0.000	0.000	0.00%
<b>CPL</b>	(B)	0.138	0.301	0.766	0.181	0.351	1.313	1.327	51.50%
		<b>Sell &amp; Buy Orders Traded per Price Type</b>							<b>(%)</b>
<b>PPT</b>	(S)	0	0	0	0	0	0	0	0.00%
<b>HBD</b>	(S)	137	267	332	177	400	231	272	100.00%
<b>BLK</b>	(S)	0	0	0	0	0	0	0	0.00%
<b>PPT</b>	(B)	0	0	0	0	0	0	0	0.00%
<b>HBD</b>	(B)	486	450	501	607	554	640	443	100.00%
<b>BLK</b>	(B)	0	0	0	0	0	0	0	0.00%

- MCP** Market Clearing Price (€/MWh)
- PPT** Priority Price-Taking
- HBD** Hybrid
- BLK** Block
- CPL** Market Coupling Flow

### Trade's Volume Mix

		Sell - MWh	Buy - MWh	
<b>Lignite</b>	(0.0%)	0	0	(0.0%)
<b>Crete Conv.</b>	(0.0%)	0	0	(0.0%)
<b>Gas</b>	(44.2%)	1,138	0	(0.0%)
<b>Hydro</b>	(2.8%)	72	14	(0.5%)
<b>Imports</b>	(5.8%)	150		
<b>RES</b>	(33.4%)	861	1,040	(40.3%)
<b>Crete RES</b>	(0.0%)	0	0	(0.0%)
<b>HV Load</b>	(0.1%)	2	9	(0.4%)
<b>MV Load</b>	(0.8%)	21	52	(2.0%)
<b>LV Load</b>	(12.9%)	332	135	(5.2%)
<b>Crete Load</b>	(0.0%)	0	0	(0.0%)
<b>Pumping</b>	(0.0%)	0	0	(0.0%)
<b>Exports</b>			1,327	(51.5%)
<b>Sys.Losses</b>	(0.0%)	0	0	(0.0%)
<b>D/R Load</b>	(0.0%)	0	0	(0.0%)

