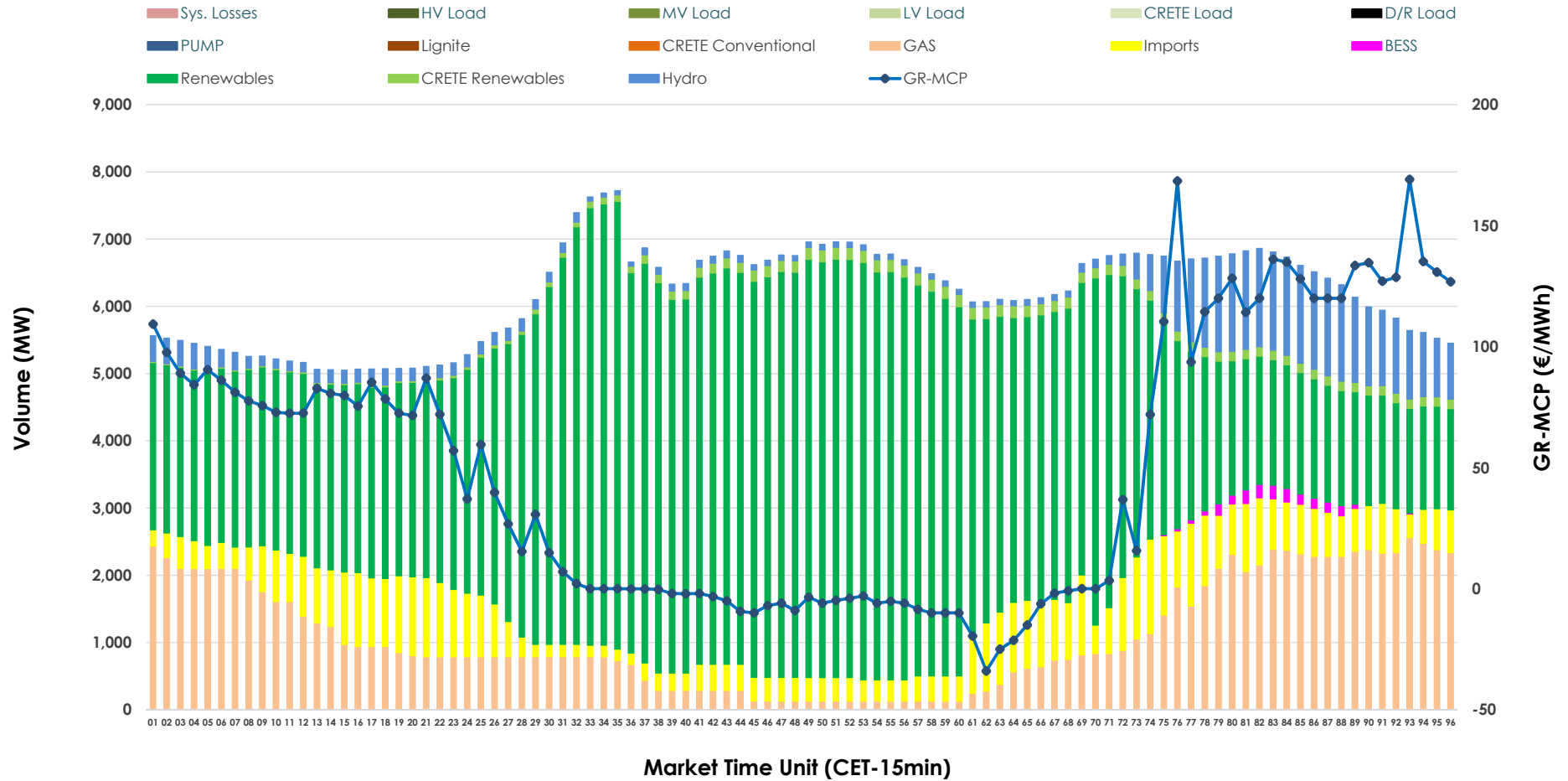


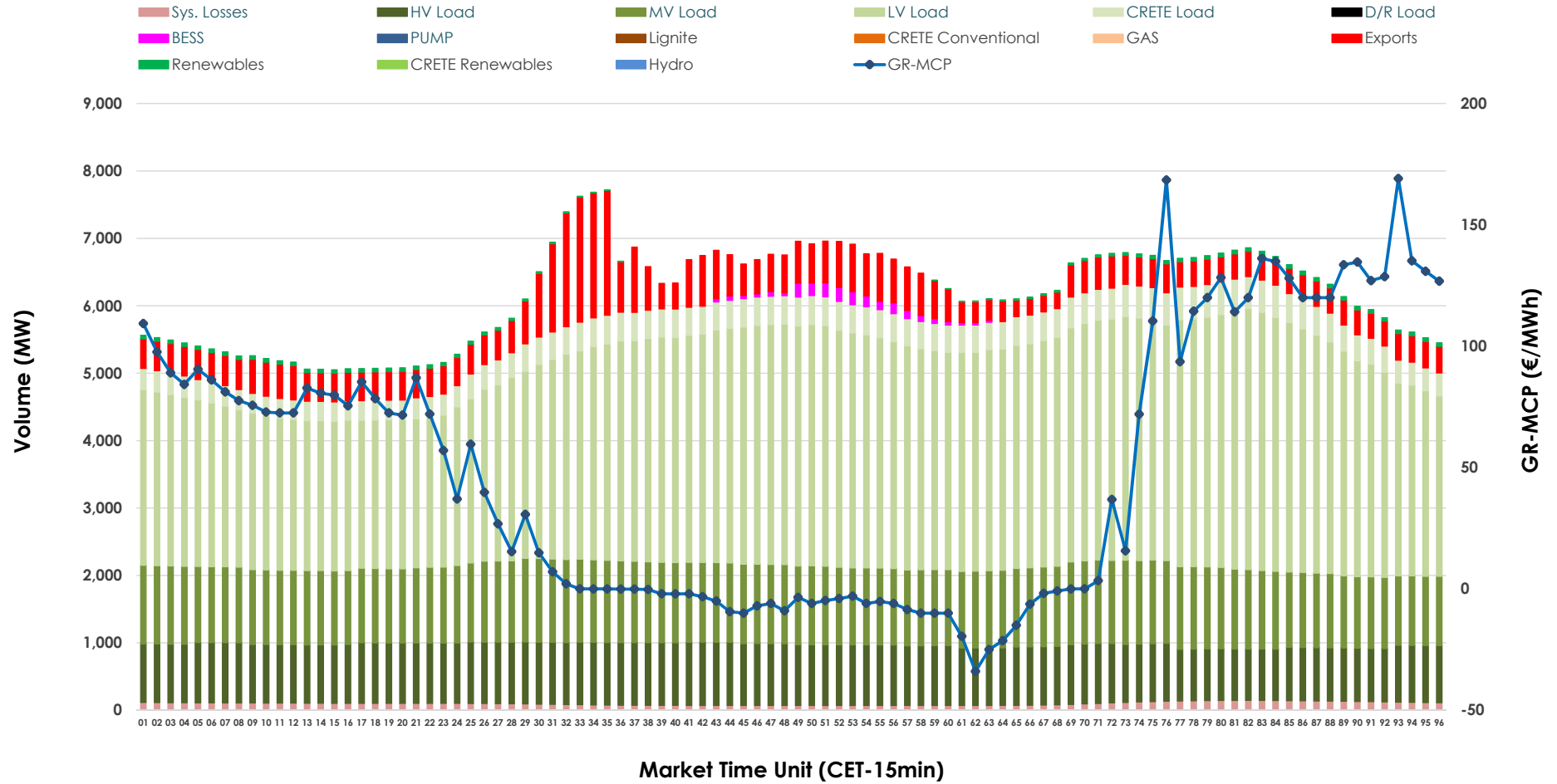


Day-Ahead Market Outlook

13.06.2026 Day-Ahead Market - Sell



13.06.2026 Day-Ahead Market - Buy



GR Bidding Zone Weekly Figures

Delivery Day	07.06	08.06	09.06	10.06	11.06	12.06	13.06
	👇 -29%	👆 65%	👉 20%	👇 -9%	👉 -3%	👆 16%	👇 -57%
Avg.MCP (€/MWh)	57.86	95.42	114.46	104.15	100.74	116.43	49.69
Max.MCP (€/MWh)	144.30	198.86	221.03	200.90	167.58	171.46	169.10
Min.MCP (€/MWh)	-5.00	-0.01	-0.01	-0.01	15.37	60.59	-34.00
	👇 -9%	👉 26%	👉 3%	👇 -2%	👇 -2%	👇 -4%	👇 -11%
Tot.Vol(GWh)	280.10	351.55	361.76	354.80	348.94	333.52	297.06

Trades by Order Type

Delivery Day		07.06	08.06	09.06	10.06	11.06	12.06	13.06	
Ord Price Type		Sell & Buy Trades in (GWh) per Price Type							(%)
PPT	(S)	59.103	72.630	65.539	61.558	57.801	57.093	68.037	45.81%
HBD	(S)	47.065	72.260	79.650	77.318	74.310	63.660	57.846	38.95%
BLK	(S)	21.989	30.502	33.822	37.882	36.463	32.591	14.016	9.44%
CPL	(S)	11.896	0.382	1.870	0.639	5.898	13.414	8.628	5.81%
PPT	(B)	16.008	16.525	15.928	16.475	16.757	16.583	16.499	11.11%
HBD	(B)	123.201	142.899	146.848	145.565	147.692	144.354	123.659	83.26%
BLK	(B)	0.000	0.000	0.000	0.000	0.000	0.000	0.000	0.00%
CPL	(B)	0.843	16.351	18.105	15.358	10.022	5.821	8.370	5.64%
		Sell & Buy Orders Traded per Price Type							(%)
PPT	(S)	1683	1794	1689	1649	1662	1672	1583	38.13%
HBD	(S)	2774	3328	3724	3651	3597	3357	2561	61.68%
BLK	(S)	10	14	18	17	15	16	8	0.19%
PPT	(B)	2349	2408	2379	2333	2348	2344	2406	37.55%
HBD	(B)	3851	3616	3938	4000	3995	3843	4001	62.45%
BLK	(B)	0	0	0	0	0	0	0	0.00%

- MCP** Market Clearing Price (€/MWh)
- PPT** Priority Price-Taking
- HBD** Hybrid
- BLK** Block
- CPL** Market Coupling Flow

Trade's Volume Mix

	Sell - MWh	Buy - MWh	
Lignite (0.0%)	0	0	(0.0%)
Crete Conv. (0.0%)	0	0	(0.0%)
Gas (17.9%)	26,625	0	(0.0%)
Hydro (6.5%)	9,634	0	(0.0%)
Imports (10.3%)	15,284		
RES (63.2%)	93,809	774	(0.5%)
Crete RES (1.8%)	2,688	0	(0.0%)
BESS (0.3%)	488	552	(0.4%)
HV Load (0.0%)	0	20,946	(14.1%)
MV Load (0.0%)	0	27,749	(18.7%)
LV Load (0.0%)	0	73,880	(49.7%)
Crete Load (0.0%)	0	9,406	(6.3%)
Pumping (0.0%)	0	0	(0.0%)
Exports		12,852	(8.7%)
Sys.Losses (0.0%)	0	2,367	(1.6%)
D/R Load (0.0%)	0	0	(0.0%)

