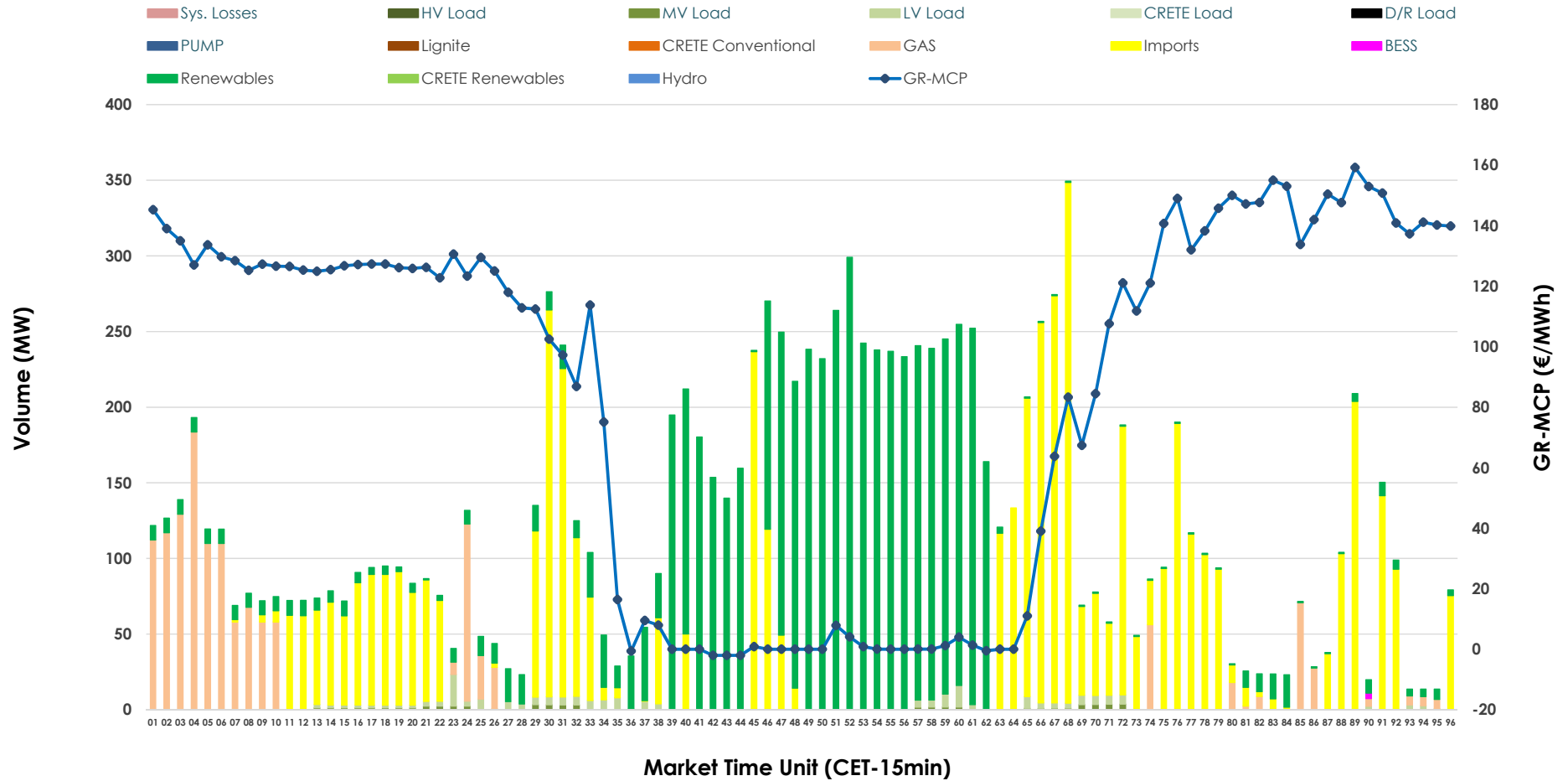


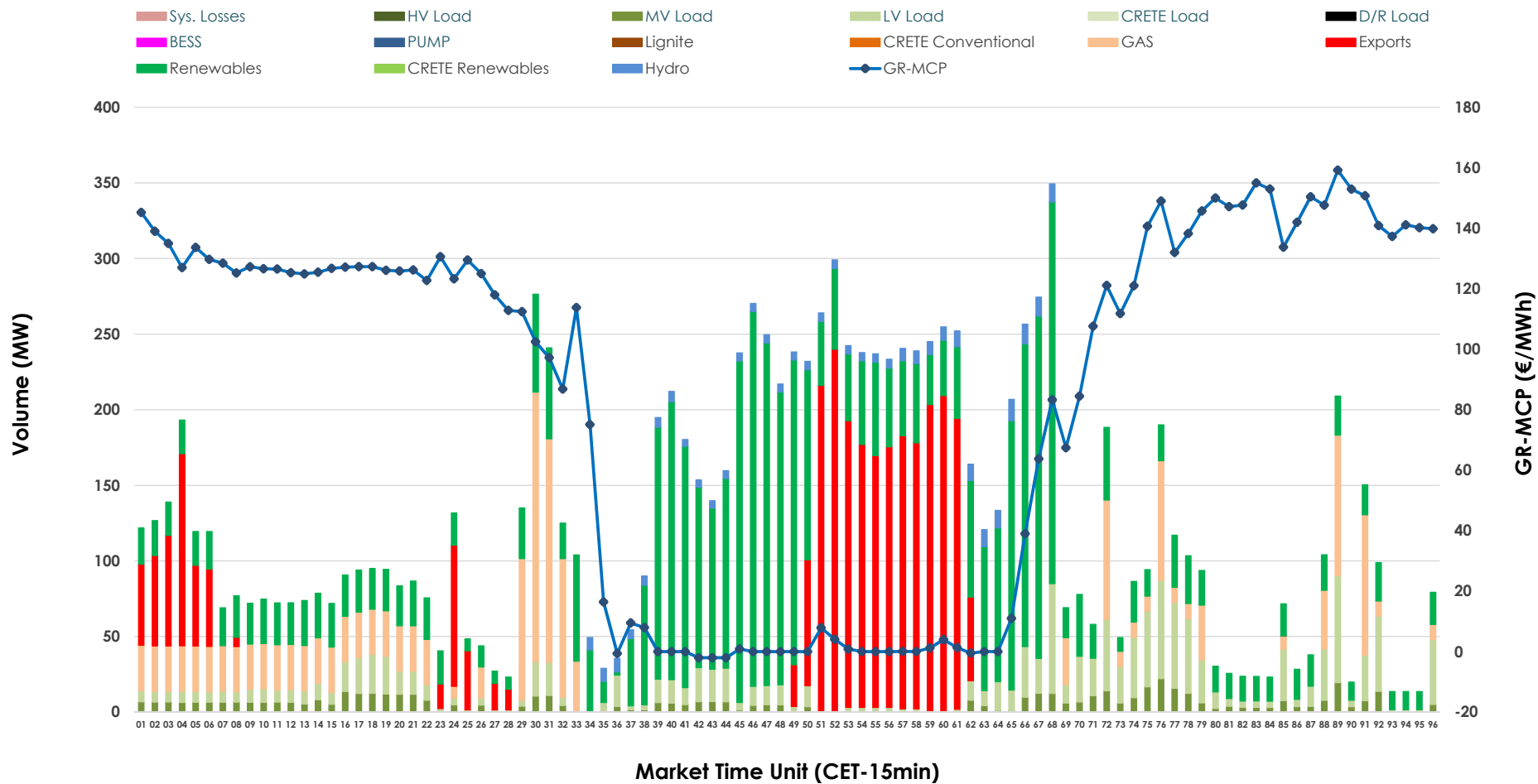


# IDA '1' Market Outlook

31.05.2026 IDA '1' Market - Sell



### 31.05.2026 IDA '1' Market - Buy



### GR Bidding Zone Weekly Figures

Delivery Day	25.05	26.05	27.05	28.05	29.05	30.05	31.05
	↗ 19%	↗ 14%	↗ 15%	↘ -5%	↘ -10%	↗ 9%	↘ -4%
<b>Avg.MCP (€/MWh)</b>	72.34	82.27	94.60	89.80	81.26	88.77	85.50
<b>Max.MCP (€/MWh)</b>	173.66	206.92	277.17	198.13	166.41	210.27	159.21
<b>Min.MCP (€/MWh)</b>	-7.44	-12.94	-7.68	-5.86	-8.93	-9.10	-2.01
	↘ -41%	↗ 32%	↘ -15%	↗ 98%	↗ 6%	↘ -25%	↗ 22%
<b>Tot.Vol(GWh)</b>	2.89	3.80	3.24	6.41	6.77	5.07	6.19

### Trades by Order Type

Delivery Day		25.05	26.05	27.05	28.05	29.05	30.05	31.05	
<b>Ord Price Type</b>		<b>Sell &amp; Buy Trades in (GWh) per Price Type</b>							<b>(%)</b>
<b>PPT</b>	(S)	0.000	0.000	0.000	0.000	0.000	0.000	0.000	0.00%
<b>HBD</b>	(S)	1.386	1.798	1.453	2.903	3.383	2.016	1.792	57.86%
<b>BLK</b>	(S)	0.000	0.000	0.000	0.000	0.000	0.000	0.000	0.00%
<b>CPL</b>	(S)	0.058	0.102	0.169	0.303	0.000	0.518	1.305	42.14%
<b>PPT</b>	(B)	0.000	0.000	0.000	0.000	0.000	0.000	0.000	0.00%
<b>HBD</b>	(B)	1.024	1.517	1.608	2.224	3.383	2.118	2.374	76.67%
<b>BLK</b>	(B)	0.000	0.000	0.000	0.000	0.000	0.000	0.000	0.00%
<b>CPL</b>	(B)	0.420	0.383	0.013	0.983	0.000	0.415	0.722	23.33%
		<b>Sell &amp; Buy Orders Traded per Price Type</b>							<b>(%)</b>
<b>PPT</b>	(S)	0	0	0	0	0	0	0	0.00%
<b>HBD</b>	(S)	196	349	306	371	267	305	243	100.00%
<b>BLK</b>	(S)	0	0	0	0	0	0	0	0.00%
<b>PPT</b>	(B)	0	0	0	0	0	0	0	0.00%
<b>HBD</b>	(B)	448	647	579	643	746	771	950	100.00%
<b>BLK</b>	(B)	0	0	0	0	0	0	0	0.00%

- MCP** Market Clearing Price (€/MWh)
- PPT** Priority Price-Taking
- HBD** Hybrid
- BLK** Block
- CPL** Market Coupling Flow

### Trade's Volume Mix

		Sell - MWh	Buy - MWh	
<b>Lignite</b>	(0.0%)	0	0	(0.0%)
<b>Crete Conv.</b>	(0.0%)	0	0	(0.0%)
<b>Gas</b>	(11.2%)	348	441	(14.2%)
<b>Hydro</b>	(0.0%)	0	66	(2.1%)
<b>Imports</b>	(42.1%)	1,305		
<b>RES</b>	(44.5%)	1,378	1,361	(43.9%)
<b>Crete RES</b>	(0.0%)	0	0	(0.0%)
<b>BESS</b>	(0.0%)	1	0	(0.0%)
<b>HV Load</b>	(0.0%)	0	0	(0.0%)
<b>MV Load</b>	(0.5%)	14	139	(4.5%)
<b>LV Load</b>	(1.6%)	50	367	(11.9%)
<b>Crete Load</b>	(0.0%)	0	0	(0.0%)
<b>Pumping</b>	(0.0%)	0	0	(0.0%)
<b>Exports</b>			722	(23.3%)
<b>Sys.Losses</b>	(0.0%)	0	0	(0.0%)
<b>D/R Load</b>	(0.0%)	0	0	(0.0%)

