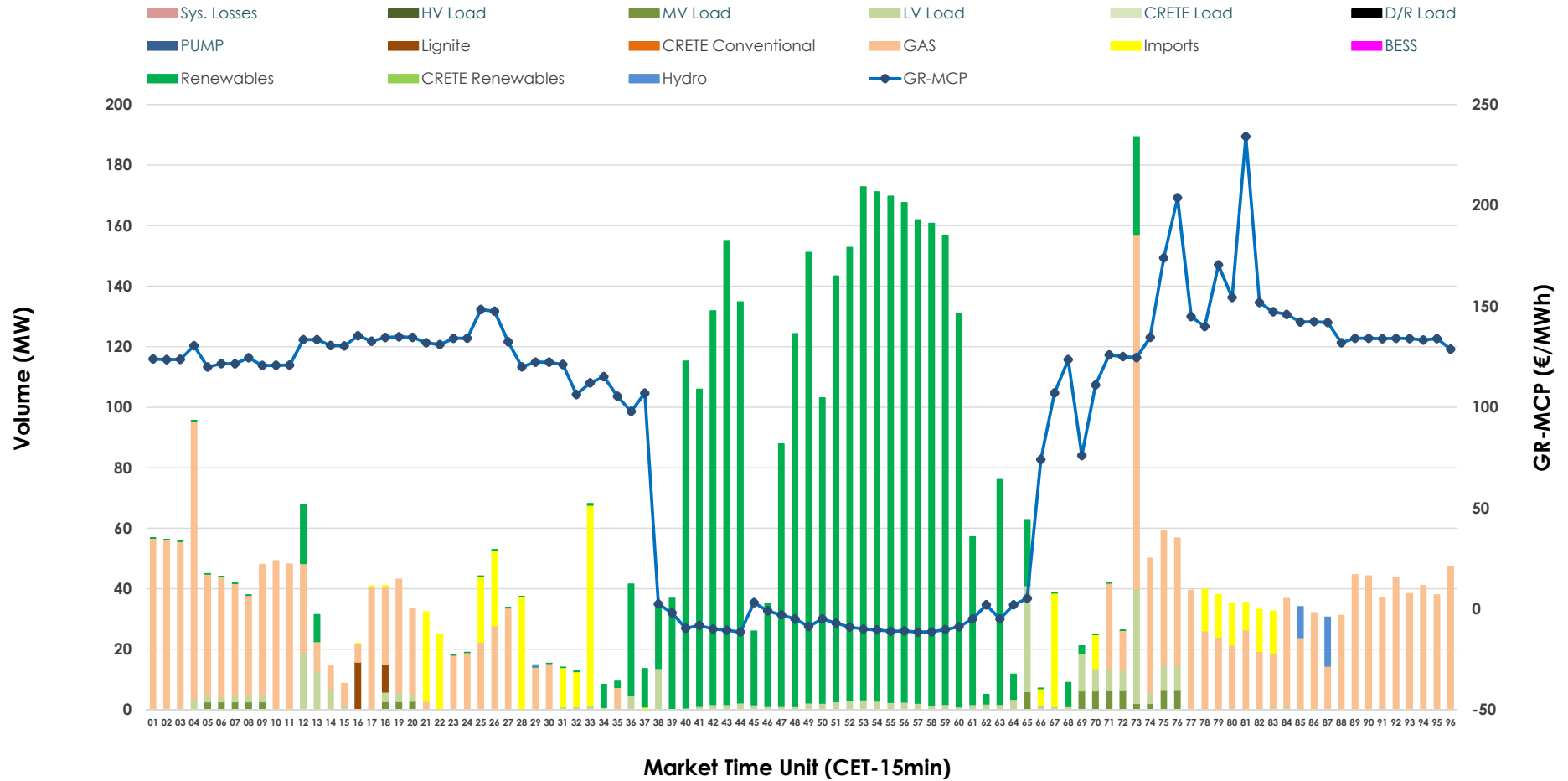


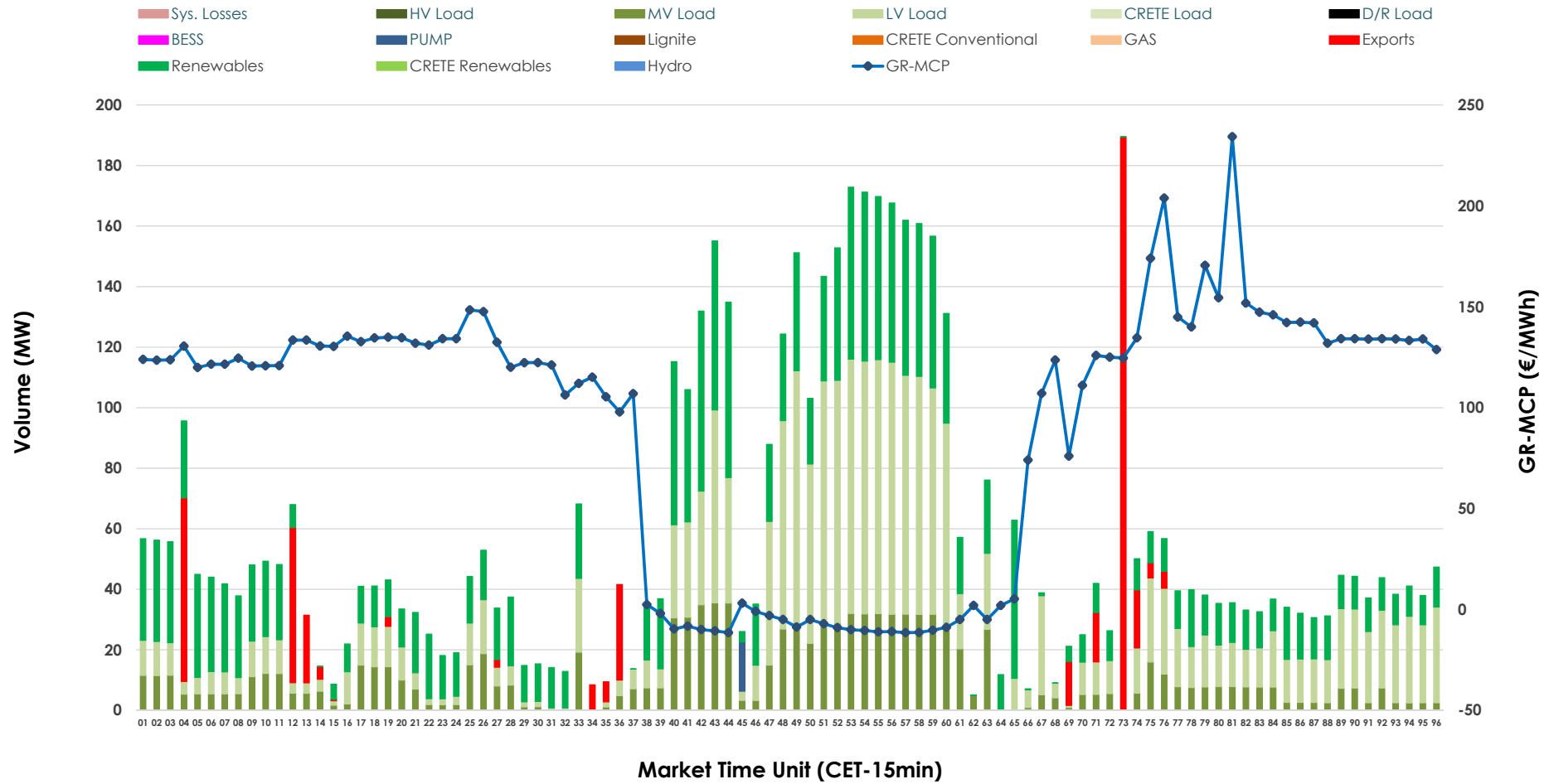


IDA '1' Market Outlook

14.05.2026 IDA '1' Market - Sell



14.05.2026 IDA '1' Market - Buy



GR Bidding Zone Weekly Figures

Delivery Day	08.05	09.05	10.05	11.05	12.05	13.05	14.05
	↗ 1%	↘ -11%	↘ -17%	↗ 6%	↘ -16%	↗ 16%	↘ -2%
Avg.MCP (€/MWh)	122.42	108.76	90.58	96.19	80.50	93.55	91.29
Max.MCP (€/MWh)	172.30	227.06	202.09	194.26	202.70	186.71	234.22
Min.MCP (€/MWh)	61.50	-7.61	-7.78	-8.55	-0.21	-11.78	-11.50
	↘ -3%	→ 0%	↘ -15%	↘ -1%	↗ 9%	↘ -5%	↘ -25%
Tot.Vol(GWh)	4.31	4.33	3.69	3.64	3.97	3.76	2.83

Trades by Order Type

Delivery Day		08.05	09.05	10.05	11.05	12.05	13.05	14.05	
Ord Price Type		Sell & Buy Trades in (GWh) per Price Type							(%)
PPT	(S)	0.000	0.000	0.000	0.000	0.000	0.000	0.000	0.00%
HBD	(S)	1.993	1.767	1.660	1.641	1.889	1.826	1.325	93.57%
BLK	(S)	0.000	0.000	0.000	0.000	0.000	0.000	0.000	0.00%
CPL	(S)	0.163	0.400	0.187	0.178	0.096	0.053	0.091	6.43%
PPT	(B)	0.000	0.000	0.000	0.000	0.000	0.000	0.000	0.00%
HBD	(B)	1.176	1.927	1.469	1.655	1.804	1.642	1.306	92.21%
BLK	(B)	0.000	0.000	0.000	0.000	0.000	0.000	0.000	0.00%
CPL	(B)	0.980	0.240	0.378	0.164	0.180	0.237	0.110	7.79%
		Sell & Buy Orders Traded per Price Type							(%)
PPT	(S)	0	0	0	0	0	0	0	0.00%
HBD	(S)	405	360	310	372	271	447	201	100.00%
BLK	(S)	0	0	0	0	0	0	0	0.00%
PPT	(B)	0	0	0	0	0	0	0	0.00%
HBD	(B)	532	554	945	738	677	653	649	100.00%
BLK	(B)	0	0	0	0	0	0	0	0.00%

- MCP** Market Clearing Price (€/MWh)
- PPT** Priority Price-Taking
- HBD** Hybrid
- BLK** Block
- CPL** Market Coupling Flow

Trade's Volume Mix

	Sell - MWh	Buy - MWh	
Lignite (0.4%)	6	0	(0.0%)
Crete Conv. (0.0%)	0	0	(0.0%)
Gas (32.4%)	458	0	(0.0%)
Hydro (0.5%)	7	0	(0.0%)
Imports (6.4%)	91		
RES (54.3%)	768	492	(34.8%)
Crete RES (0.0%)	0	0	(0.0%)
BESS (0.0%)	0	0	(0.0%)
HV Load (0.0%)	0	0	(0.0%)
MV Load (1.2%)	17	270	(19.1%)
LV Load (4.8%)	68	539	(38.1%)
Crete Load (0.0%)	0	0	(0.0%)
Pumping (0.0%)	0	4	(0.3%)
Exports		110	(7.8%)
Sys.Losses (0.0%)	0	0	(0.0%)
D/R Load (0.0%)	0	0	(0.0%)

