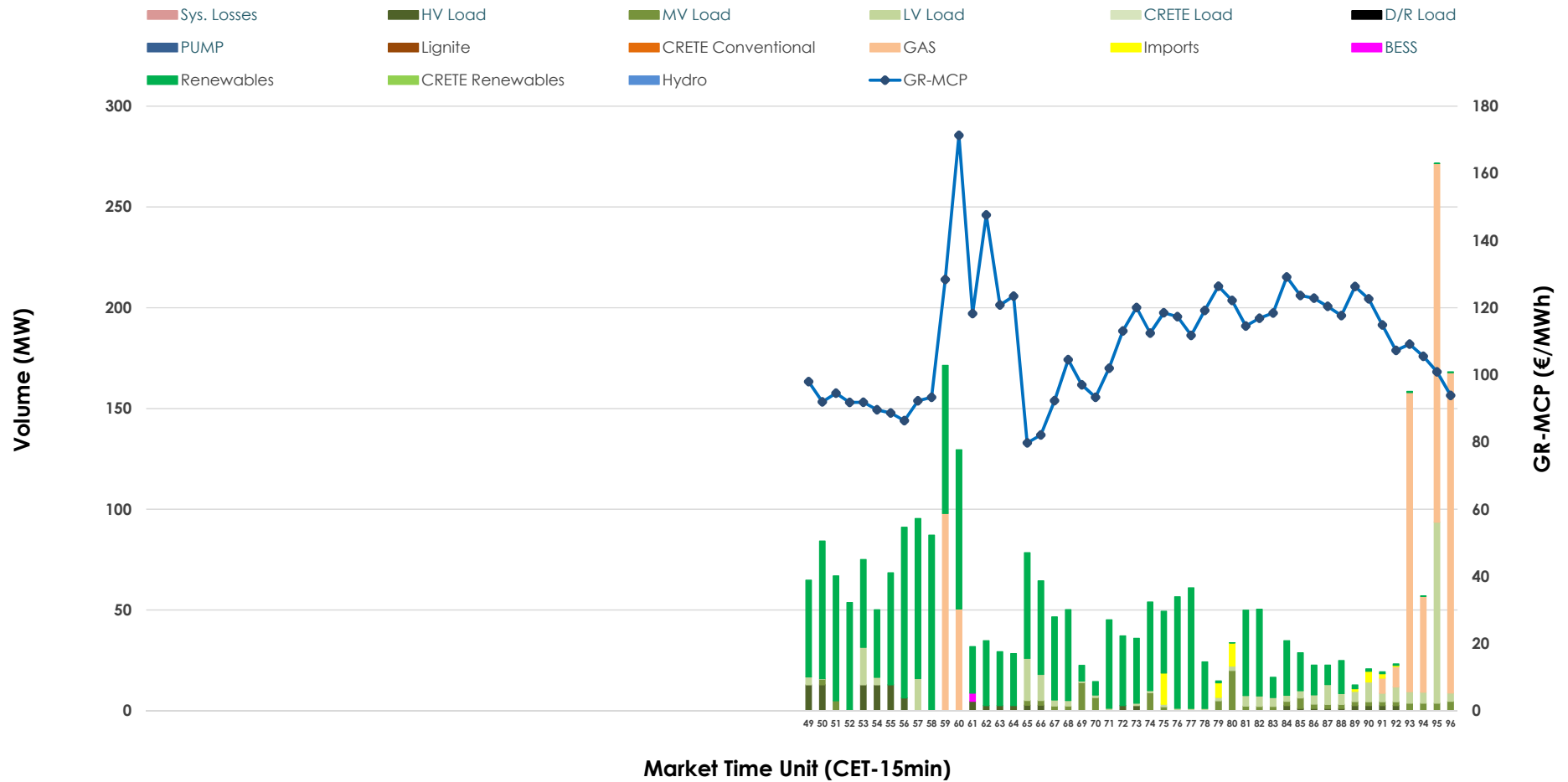


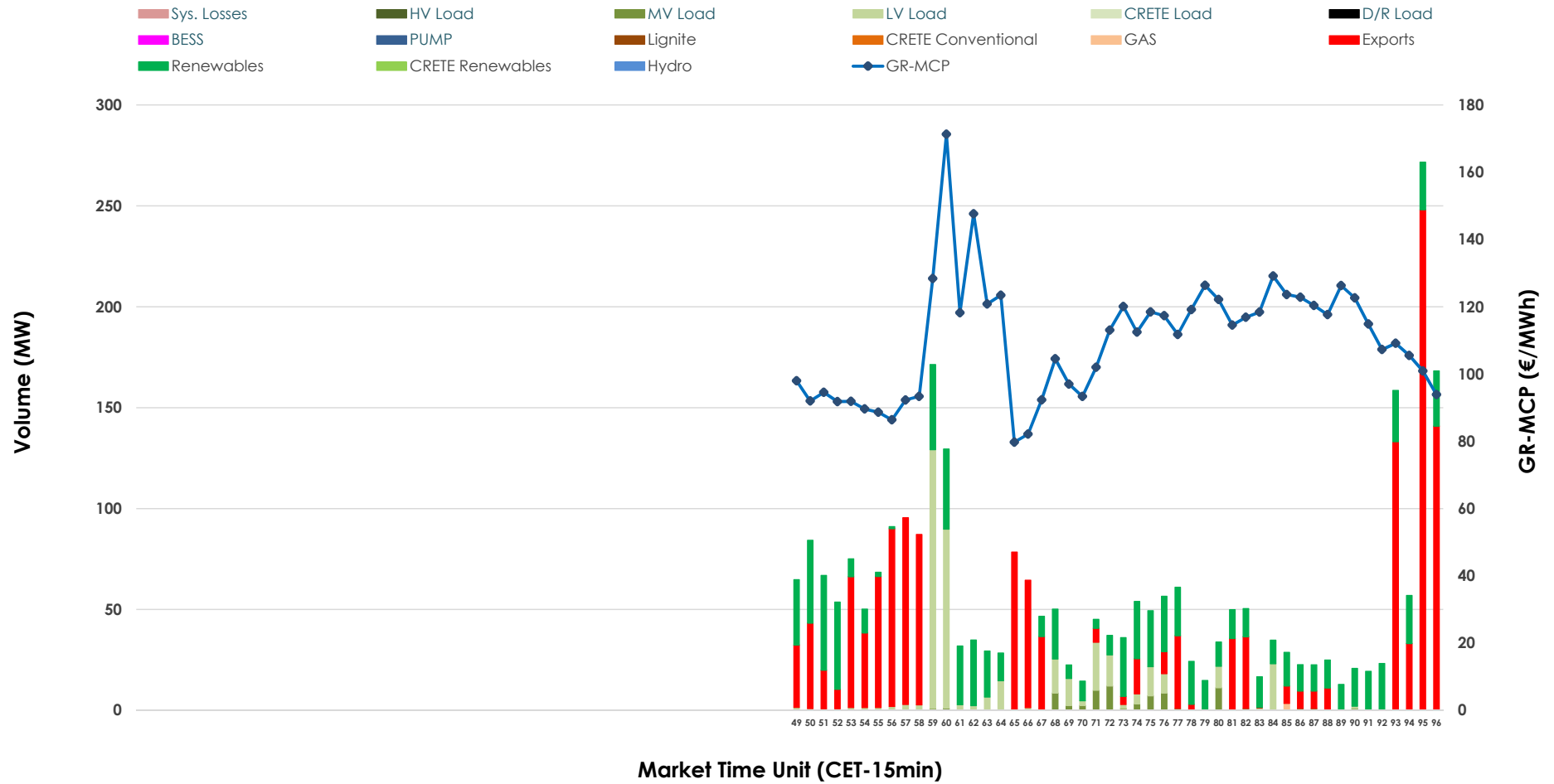


IDA '3' Market Outlook

12.06.2026 IDA '3' Market - Sell



12.06.2026 IDA '3' Market - Buy



GR Bidding Zone Weekly Figures

Delivery Day	06.06	07.06	08.06	09.06	10.06	11.06	12.06
	↓ -44%	→ 0%	↑ 72%	→ 1%	↔ 5%	↔ -14%	↔ 5%
Avg.MCP (€/MWh)	66.44	66.65	114.70	115.70	121.94	104.93	110.09
Max.MCP (€/MWh)	150.74	149.92	195.70	203.07	197.81	162.38	171.30
Min.MCP (€/MWh)	-32.00	-11.56	6.55	16.45	-6.35	35.10	79.76
	↑ 97%	↓ -38%	↔ 26%	↑ 40%	↔ -13%	↔ 31%	↓ -57%
Tot.Vol(GWh)	2.60	1.62	2.04	2.85	2.48	3.26	1.42

Trades by Order Type

Delivery Day		06.06	07.06	08.06	09.06	10.06	11.06	12.06	
Ord Price Type		Sell & Buy Trades in (GWh) per Price Type							(%)
PPT	(S)	0.000	0.000	0.000	0.000	0.000	0.000	0.000	0.00%
HBD	(S)	0.223	0.713	0.529	1.346	0.406	0.777	0.697	98.46%
BLK	(S)	0.000	0.000	0.000	0.000	0.000	0.000	0.000	0.00%
CPL	(S)	1.079	0.097	0.492	0.081	0.836	0.855	0.011	1.54%
PPT	(B)	0.000	0.000	0.000	0.000	0.000	0.000	0.000	0.00%
HBD	(B)	1.301	0.500	1.007	0.618	0.618	0.702	0.345	48.73%
BLK	(B)	0.000	0.000	0.000	0.000	0.000	0.000	0.000	0.00%
CPL	(B)	0.000	0.310	0.014	0.809	0.625	0.930	0.363	51.27%
		Sell & Buy Orders Traded per Price Type							(%)
PPT	(S)	0	0	0	0	0	0	0	0.00%
HBD	(S)	58	79	133	237	156	168	278	100.00%
BLK	(S)	0	0	0	0	0	0	0	0.00%
PPT	(B)	0	0	0	0	0	0	0	0.00%
HBD	(B)	273	172	255	274	245	229	184	100.00%
BLK	(B)	0	0	0	0	0	0	0	0.00%

- MCP** Market Clearing Price (€/MWh)
- PPT** Priority Price-Taking
- HBD** Hybrid
- BLK** Block
- CPL** Market Coupling Flow

Trade's Volume Mix

	Sell - MWh	Buy - MWh	
Lignite (0.0%)	0	0	(0.0%)
Crete Conv. (0.0%)	0	0	(0.0%)
Gas (24.7%)	175	1	(0.1%)
Hydro (0.0%)	0	0	(0.0%)
Imports (1.5%)	11		
RES (56.0%)	397	226	(31.8%)
Crete RES (0.0%)	0	0	(0.0%)
BESS (0.1%)	1	0	(0.0%)
HV Load (4.0%)	28	0	(0.0%)
MV Load (4.2%)	29	18	(2.6%)
LV Load (9.5%)	67	100	(14.2%)
Crete Load (0.0%)	0	0	(0.0%)
Pumping (0.0%)	0	0	(0.0%)
Exports		363	(51.3%)
Sys.Losses (0.0%)	0	0	(0.0%)
D/R Load (0.0%)	0	0	(0.0%)

