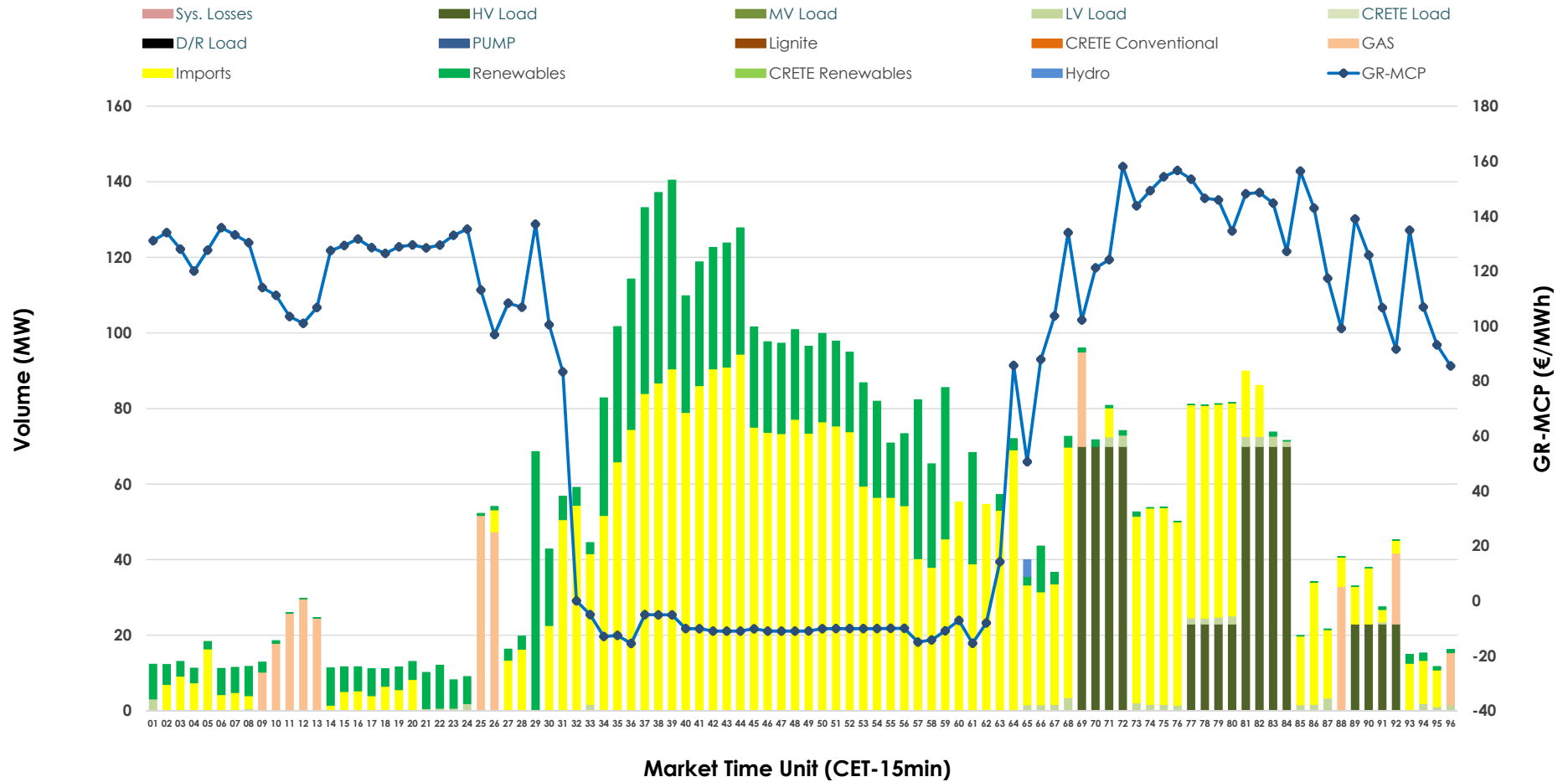


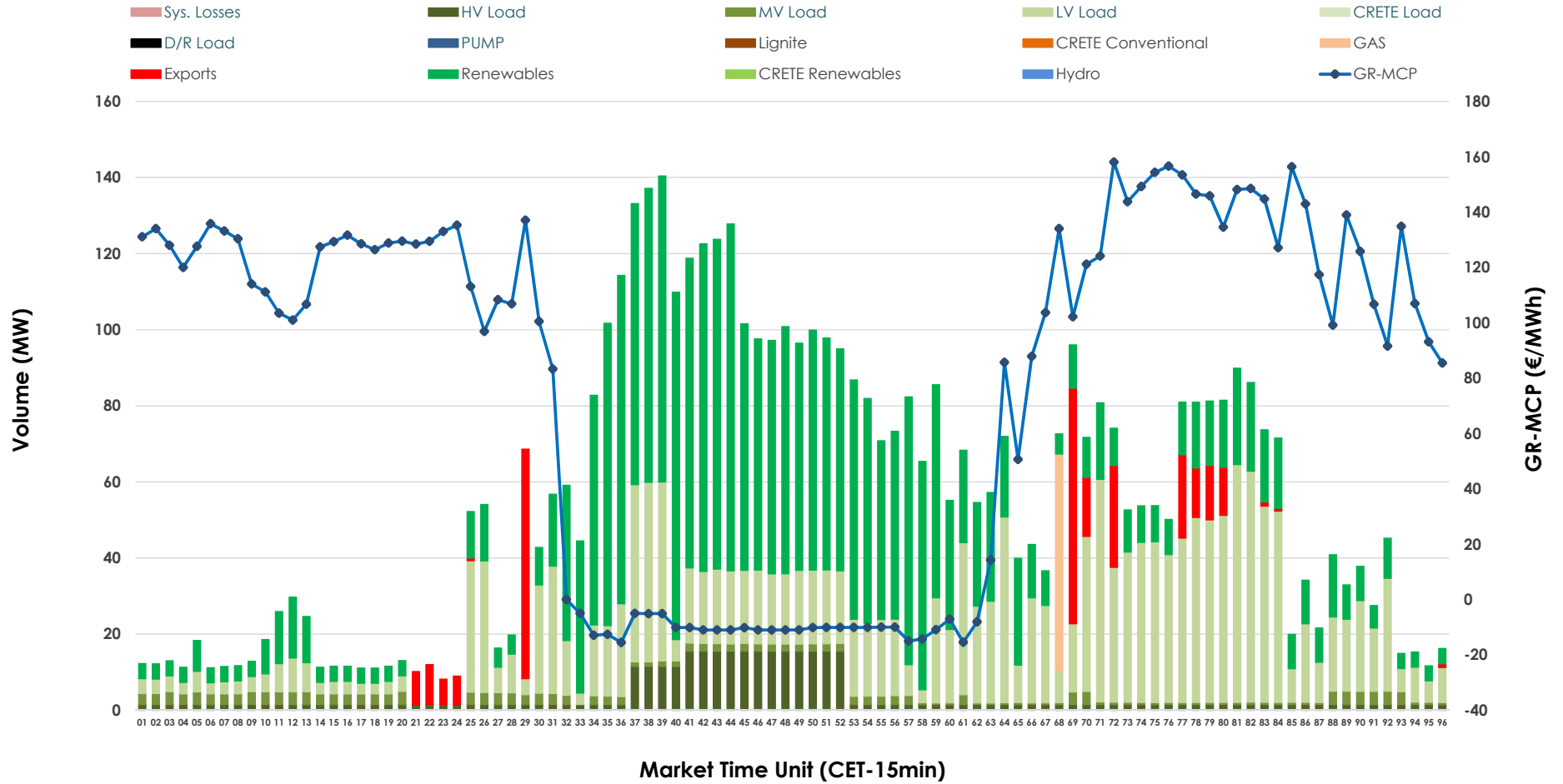


IDA '1' Market Outlook

15.03.2026 IDA '1' Market - Sell



15.03.2026 IDA '1' Market - Buy



GR Bidding Zone Weekly Figures

Delivery Day	09.03	10.03	11.03	12.03	13.03	14.03	15.03
	→ 0%	↔ 2%	↗ 16%	↘ 18%	↗ -28%	↘ 4%	↘ -3%
Avg.MCP (€/MWh)	78.31	79.81	92.43	109.46	78.36	81.45	78.90
Max.MCP (€/MWh)	251.15	250.86	243.25	257.52	206.44	183.47	158.04
Min.MCP (€/MWh)	-15.00	-14.90	-6.99	-9.65	-24.30	-17.57	-15.50
	↑ 45%	↔ 31%	↓ -46%	↑ 79%	↔ 14%	↓ -36%	↘ -20%
Tot.Vol(GWh)	3.68	4.82	2.58	4.61	5.27	3.37	2.69

Trades by Order Type

Delivery Day	09.03	10.03	11.03	12.03	13.03	14.03	15.03	
Ord Price Type	Sell & Buy Trades in (GWh) per Price Type							(%)
PPT (S)	0.000	0.000	0.000	0.000	0.000	0.000	0.000	0.00%
HBD (S)	1.689	2.271	1.087	1.942	2.606	1.018	0.554	41.13%
BLK (S)	0.000	0.000	0.000	0.000	0.000	0.000	0.000	0.00%
CPL (S)	0.149	0.140	0.203	0.361	0.029	0.665	0.793	58.87%
PPT (B)	0.000	0.000	0.000	0.000	0.000	0.000	0.000	0.00%
HBD (B)	1.678	2.365	1.124	2.233	1.733	1.503	1.282	95.12%
BLK (B)	0.000	0.000	0.000	0.000	0.000	0.000	0.000	0.00%
CPL (B)	0.160	0.046	0.166	0.070	0.902	0.180	0.066	4.88%
Ord Price Type	Sell & Buy Orders Traded per Price Type							(%)
PPT (S)	0	0	0	0	0	0	0	0.00%
HBD (S)	89	435	222	286	300	327	203	100.00%
BLK (S)	0	0	0	0	0	0	0	0.00%
PPT (B)	0	0	0	0	0	0	0	0.00%
HBD (B)	840	1017	922	927	1203	882	715	100.00%
BLK (B)	0	0	0	0	0	0	0	0.00%

- MCP** Market Clearing Price (€/MWh)
- PPT** Priority Price-Taking
- HBD** Hybrid
- BLK** Block
- CPL** Market Coupling Flow

Trade's Volume Mix

	Sell - MWh	Buy - MWh	
Lignite (0.0%)	0	0	(0.0%)
Crete Conv. (0.0%)	0	0	(0.0%)
Gas (5.5%)	74	14	(1.1%)
Hydro (0.1%)	1	0	(0.0%)
Imports (58.9%)	793		
RES (20.6%)	278	647	(48.0%)
Crete RES (0.0%)	0	0	(0.0%)
HV Load (13.8%)	186	88	(6.5%)
MV Load (0.0%)	0	44	(3.3%)
LV Load (1.1%)	15	488	(36.2%)
Crete Load (0.0%)	0	0	(0.0%)
Pumping (0.0%)	0	0	(0.0%)
Exports		66	(4.9%)
Sys.Losses (0.0%)	0	0	(0.0%)
D/R Load (0.0%)	0	0	(0.0%)

