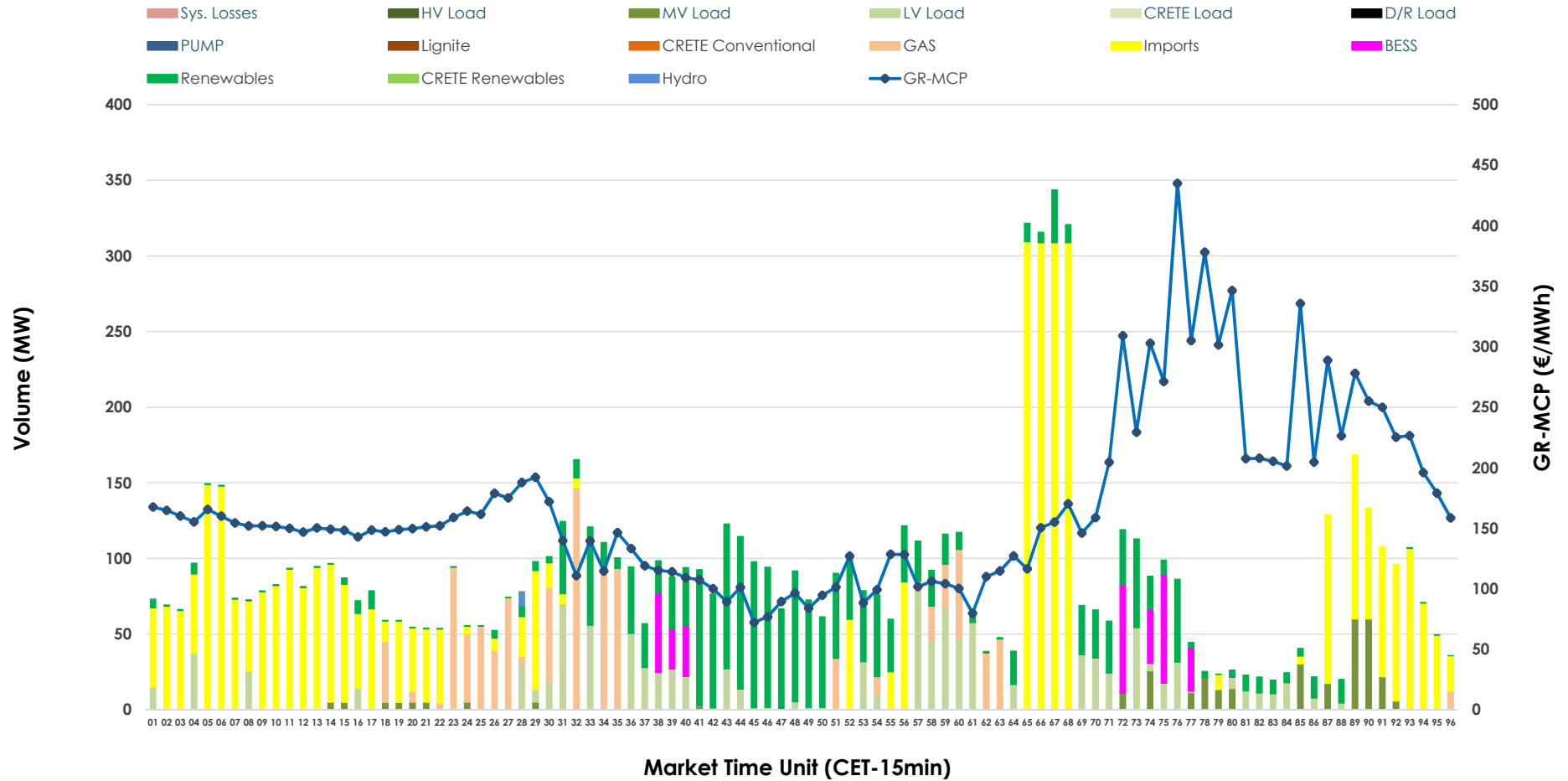


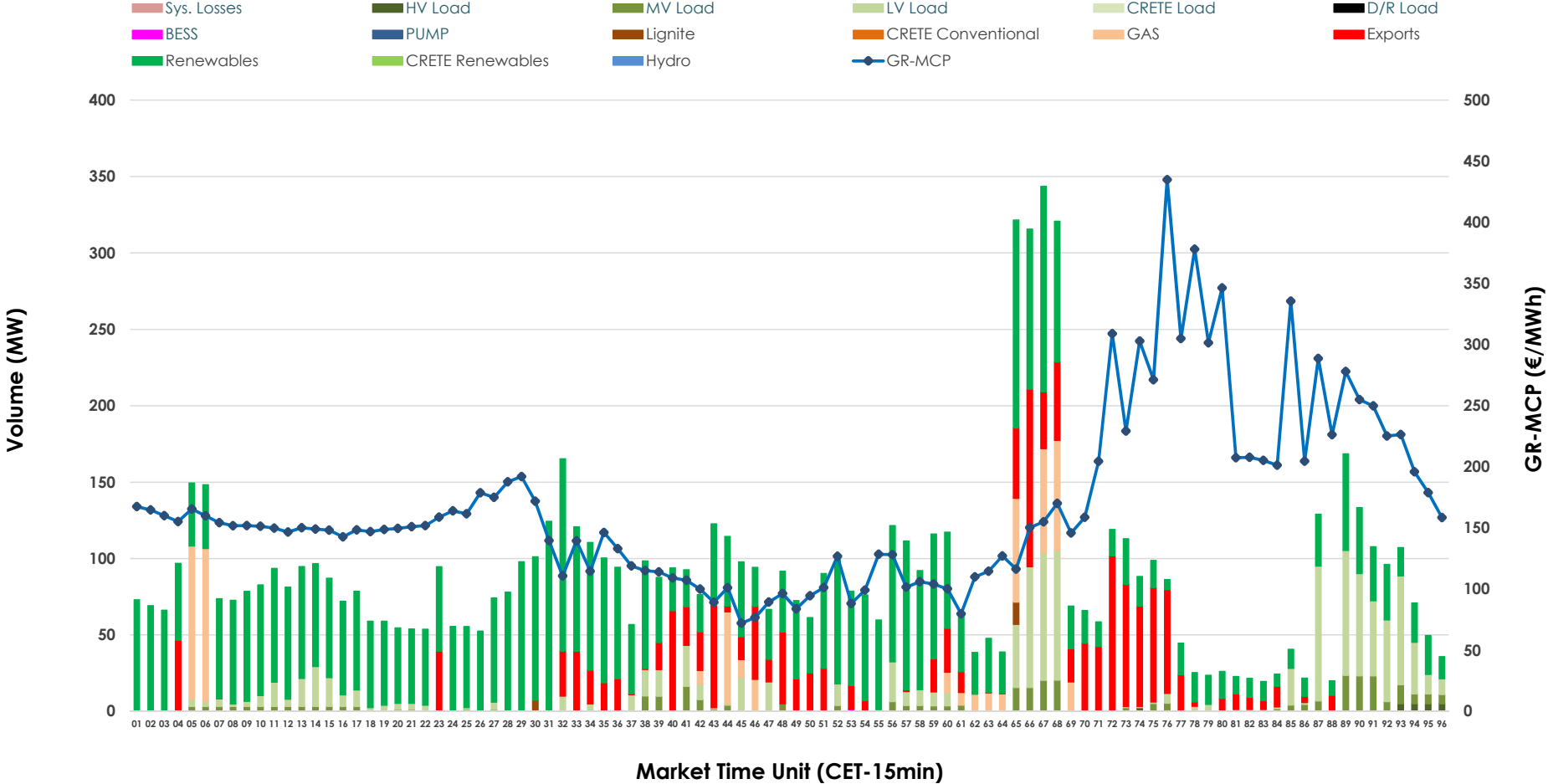


IDA '2' Market Outlook

01.07.2026 IDA '2' Market - Sell



01.07.2026 IDA '2' Market - Buy



GR Bidding Zone Weekly Figures

Delivery Day	25.06	26.06	27.06	28.06	29.06	30.06	01.07
	👇 -20%	👇 -27%	➡ 1%	👇 -22%	👆 50%	👆 37%	👆 20%
Avg.MCP (€/MWh)	119.57	86.86	87.62	68.04	101.76	139.08	167.17
Max.MCP (€/MWh)	280.64	187.76	198.96	147.37	280.03	509.29	434.88
Min.MCP (€/MWh)	28.12	-10.00	-9.13	-11.32	-0.38	-9.83	72.11
	👇 -19%	👇 -38%	👆 87%	👇 -28%	👇 -15%	👆 6%	👆 26%
Tot.Vol(GWh)	4.52	2.82	5.28	3.83	3.24	3.44	4.35

Trades by Order Type

Delivery Day		25.06	26.06	27.06	28.06	29.06	30.06	01.07	
Ord Price Type		Sell & Buy Trades in (GWh) per Price Type							(%)
PPT	(S)	0.000	0.000	0.000	0.000	0.000	0.000	0.000	0.00%
HBD	(S)	0.986	1.343	2.496	0.917	1.523	1.318	1.207	55.56%
BLK	(S)	0.000	0.000	0.000	0.000	0.000	0.000	0.000	0.00%
CPL	(S)	1.276	0.067	0.145	0.996	0.095	0.404	0.966	44.44%
PPT	(B)	0.000	0.000	0.000	0.000	0.000	0.000	0.000	0.00%
HBD	(B)	1.330	0.947	1.304	1.685	0.757	1.236	1.788	82.28%
BLK	(B)	0.000	0.000	0.000	0.000	0.000	0.000	0.000	0.00%
CPL	(B)	0.932	0.462	1.337	0.228	0.861	0.486	0.385	17.72%
		Sell & Buy Orders Traded per Price Type							(%)
PPT	(S)	0	0	0	0	0	0	0	0.00%
HBD	(S)	321	326	470	249	424	315	309	100.00%
BLK	(S)	0	0	0	0	0	0	0	0.00%
PPT	(B)	0	0	0	0	0	0	0	0.00%
HBD	(B)	377	292	476	447	250	366	613	100.00%
BLK	(B)	0	0	0	0	0	0	0	0.00%

- MCP** Market Clearing Price (€/MWh)
- PPT** Priority Price-Taking
- HBD** Hybrid
- BLK** Block
- CPL** Market Coupling Flow

Trade's Volume Mix

	Sell - MWh	Buy - MWh	
Lignite (0.0%)	0	5	(0.2%)
Crete Conv. (0.0%)	0	0	(0.0%)
Gas (11.7%)	253	146	(6.7%)
Hydro (0.1%)	2	0	(0.0%)
Imports (44.4%)	966		
RES (23.4%)	509	1,249	(57.5%)
Crete RES (0.0%)	0	0	(0.0%)
BESS (3.7%)	80	0	(0.0%)
HV Load (0.0%)	0	6	(0.3%)
MV Load (3.9%)	84	85	(3.9%)
LV Load (12.8%)	278	296	(13.6%)
Crete Load (0.0%)	0	0	(0.0%)
Pumping (0.0%)	0	0	(0.0%)
Exports		385	(17.7%)
Sys.Losses (0.0%)	0	0	(0.0%)
D/R Load (0.0%)	0	0	(0.0%)

