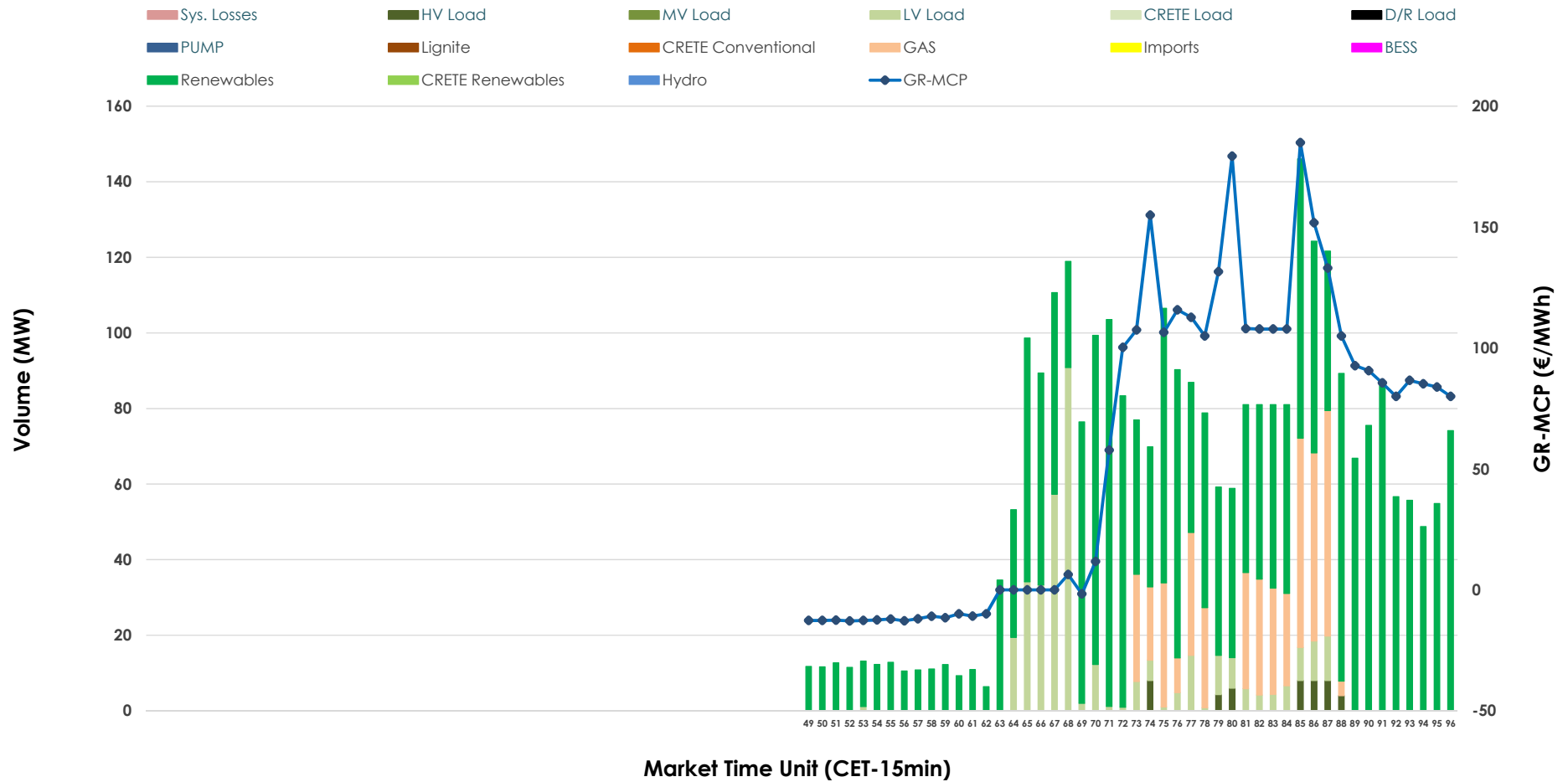


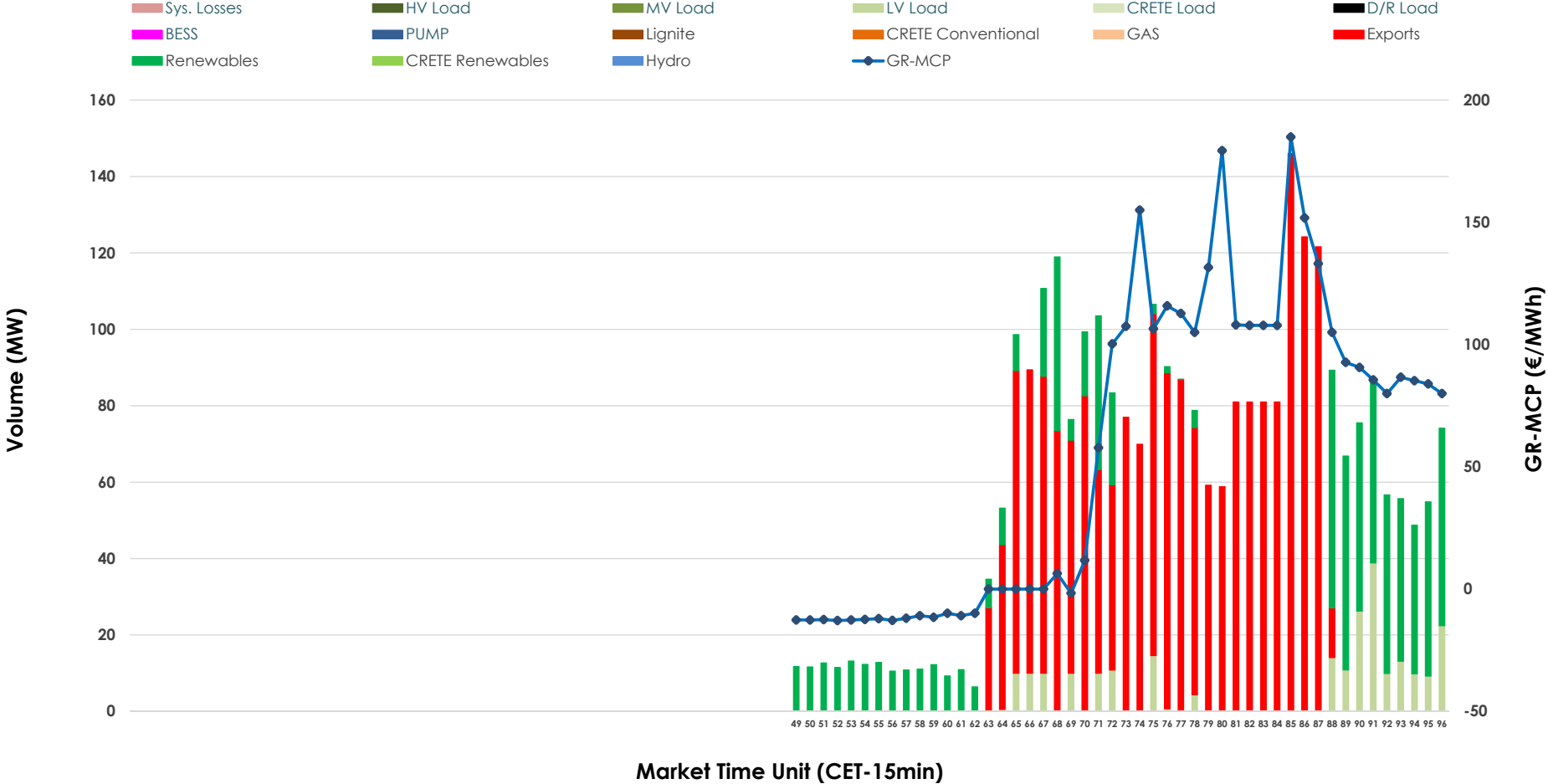


IDA '3' Market Outlook

01.05.2026 IDA '3' Market - Sell



01.05.2026 IDA '3' Market - Buy



GR Bidding Zone Weekly Figures

Delivery Day	25.04	26.04	27.04	28.04	29.04	30.04	01.05
	↓ -41%	↔ 15%	↔ 15%	↔ 4%	↑ 50%	↔ -26%	↔ -28%
Avg.MCP (€/MWh)	50.89	58.43	67.48	70.09	105.43	78.43	56.53
Max.MCP (€/MWh)	181.23	137.21	184.30	157.70	233.89	193.40	184.92
Min.MCP (€/MWh)	-49.00	-65.00	-15.66	-19.62	-4.58	0.39	-12.84
	↓ -46%	↔ -5%	↑ 53%	↔ -13%	↑ 92%	↓ -44%	↔ -13%
Tot.Vol(GWh)	1.25	1.18	1.81	1.58	3.03	1.70	1.49

Trades by Order Type

Delivery Day		25.04	26.04	27.04	28.04	29.04	30.04	01.05	
Ord Price Type		Sell & Buy Trades in (GWh) per Price Type							(%)
PPT	(S)	0.000	0.000	0.000	0.000	0.000	0.000	0.000	0.00%
HBD	(S)	0.579	0.491	0.748	0.490	0.910	0.841	0.744	100.00%
BLK	(S)	0.000	0.000	0.000	0.000	0.000	0.000	0.000	0.00%
CPL	(S)	0.045	0.099	0.157	0.298	0.607	0.011	0.000	0.00%
PPT	(B)	0.000	0.000	0.000	0.000	0.000	0.000	0.000	0.00%
HBD	(B)	0.487	0.493	0.608	0.633	1.492	0.434	0.256	34.41%
BLK	(B)	0.000	0.000	0.000	0.000	0.000	0.000	0.000	0.00%
CPL	(B)	0.137	0.097	0.296	0.155	0.025	0.418	0.488	65.59%
		Sell & Buy Orders Traded per Price Type							(%)
PPT	(S)	0	0	0	0	0	0	0	0.00%
HBD	(S)	174	148	192	105	230	233	183	100.00%
BLK	(S)	0	0	0	0	0	0	0	0.00%
PPT	(B)	0	0	0	0	0	0	0	0.00%
HBD	(B)	94	85	175	247	178	124	88	100.00%
BLK	(B)	0	0	0	0	0	0	0	0.00%

- MCP** Market Clearing Price (€/MWh)
- PPT** Priority Price-Taking
- HBD** Hybrid
- BLK** Block
- CPL** Market Coupling Flow

Trade's Volume Mix

	Sell - MWh	Buy - MWh	
Lignite (0.0%)	0	0	(0.0%)
Crete Conv. (0.0%)	0	0	(0.0%)
Gas (14.5%)	108	0	(0.0%)
Hydro (0.0%)	0	0	(0.0%)
Imports (0.0%)	0		
RES (71.9%)	535	197	(26.4%)
Crete RES (0.0%)	0	0	(0.0%)
BESS (0.0%)	0	0	(0.0%)
HV Load (1.6%)	12	0	(0.0%)
MV Load (0.0%)	0	0	(0.0%)
LV Load (12.0%)	89	59	(8.0%)
Crete Load (0.0%)	0	0	(0.0%)
Pumping (0.0%)	0	0	(0.0%)
Exports		488	(65.6%)
Sys.Losses (0.0%)	0	0	(0.0%)
D/R Load (0.0%)	0	0	(0.0%)

