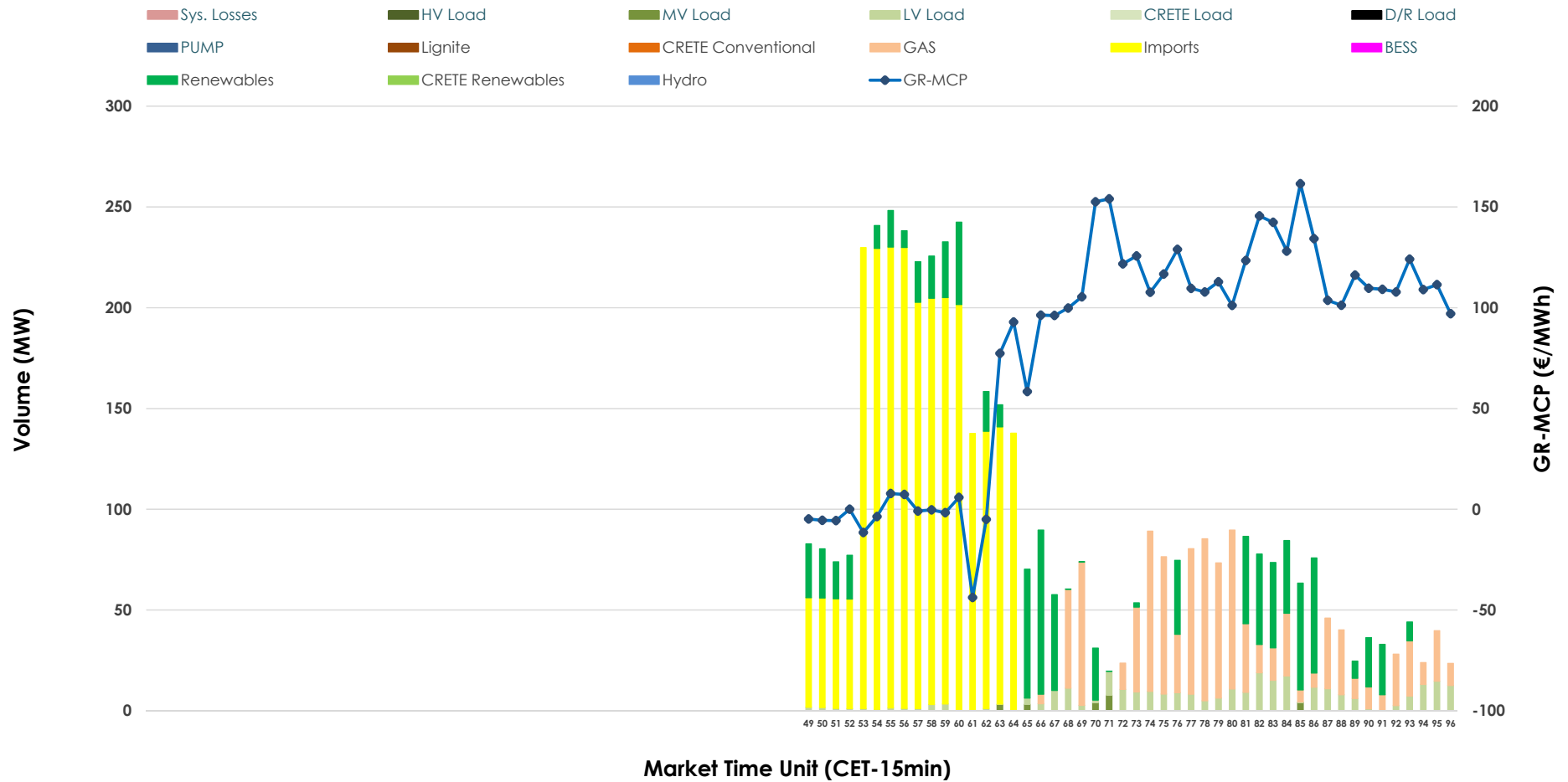


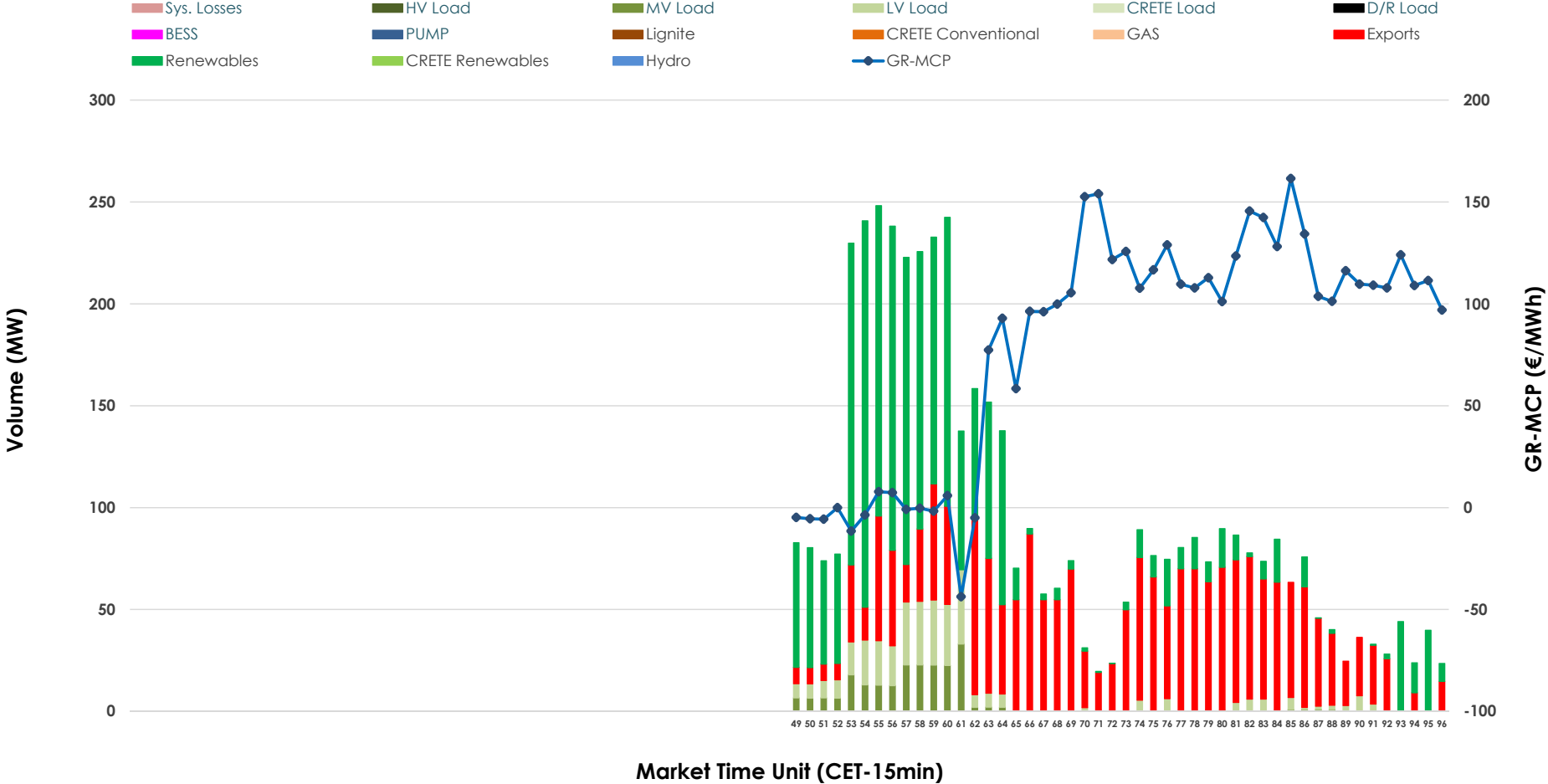


IDA '3' Market Outlook

26.03.2026 IDA '3' Market - Sell



26.03.2026 IDA '3' Market - Buy



GR Bidding Zone Weekly Figures

Delivery Day	20.03	21.03	22.03	23.03	24.03	25.03	26.03
	👇 -2%	👇 -17%	👇 -14%	👆 79%	👇 -29%	👇 -16%	👇 -22%
Avg.MCP (€/MWh)	133.90	111.20	95.13	170.66	121.58	102.12	79.75
Max.MCP (€/MWh)	233.89	164.90	188.64	292.57	203.53	205.42	161.54
Min.MCP (€/MWh)	63.67	23.69	-9.13	88.57	15.87	-7.26	-43.75
	👉 10%	👆 68%	👇 -64%	👉 20%	👇 0%	👇 -36%	👆 110%
Tot.Vol(GWh)	2.39	4.02	1.43	1.71	1.71	1.10	2.31

Trades by Order Type

Delivery Day		20.03	21.03	22.03	23.03	24.03	25.03	26.03	
Ord Price Type		Sell & Buy Trades in (GWh) per Price Type							(%)
PPT	(S)	0.000	0.000	0.000	0.000	0.000	0.000	0.000	0.00%
HBD	(S)	1.020	1.230	0.638	0.817	0.430	0.414	0.535	46.23%
BLK	(S)	0.000	0.000	0.000	0.000	0.000	0.000	0.000	0.00%
CPL	(S)	0.176	0.778	0.078	0.039	0.426	0.138	0.622	53.77%
PPT	(B)	0.000	0.000	0.000	0.000	0.000	0.000	0.000	0.00%
HBD	(B)	0.695	1.920	0.524	0.528	0.677	0.353	0.650	56.13%
BLK	(B)	0.000	0.000	0.000	0.000	0.000	0.000	0.000	0.00%
CPL	(B)	0.501	0.088	0.192	0.328	0.178	0.199	0.508	43.87%
		Sell & Buy Orders Traded per Price Type							(%)
PPT	(S)	0	0	0	0	0	0	0	0.00%
HBD	(S)	213	149	224	168	158	224	156	100.00%
BLK	(S)	0	0	0	0	0	0	0	0.00%
PPT	(B)	0	0	0	0	0	0	0	0.00%
HBD	(B)	328	402	221	216	273	143	142	100.00%
BLK	(B)	0	0	0	0	0	0	0	0.00%

- MCP** Market Clearing Price (€/MWh)
- PPT** Priority Price-Taking
- HBD** Hybrid
- BLK** Block
- CPL** Market Coupling Flow

Trade's Volume Mix

	Sell - MWh	Buy - MWh	
Lignite (0.0%)	0	0	(0.0%)
Crete Conv. (0.0%)	0	0	(0.0%)
Gas (20.7%)	240	0	(0.0%)
Hydro (0.0%)	0	0	(0.0%)
Imports (53.8%)	622		
RES (18.8%)	217	509	(43.9%)
Crete RES (0.0%)	0	0	(0.0%)
BESS (0.0%)	0	0	(0.0%)
HV Load (0.0%)	0	0	(0.0%)
MV Load (0.5%)	6	54	(4.7%)
LV Load (6.2%)	72	87	(7.5%)
Crete Load (0.0%)	0	0	(0.0%)
Pumping (0.0%)	0	0	(0.0%)
Exports		508	(43.9%)
Sys.Losses (0.0%)	0	0	(0.0%)
D/R Load (0.0%)	0	0	(0.0%)

