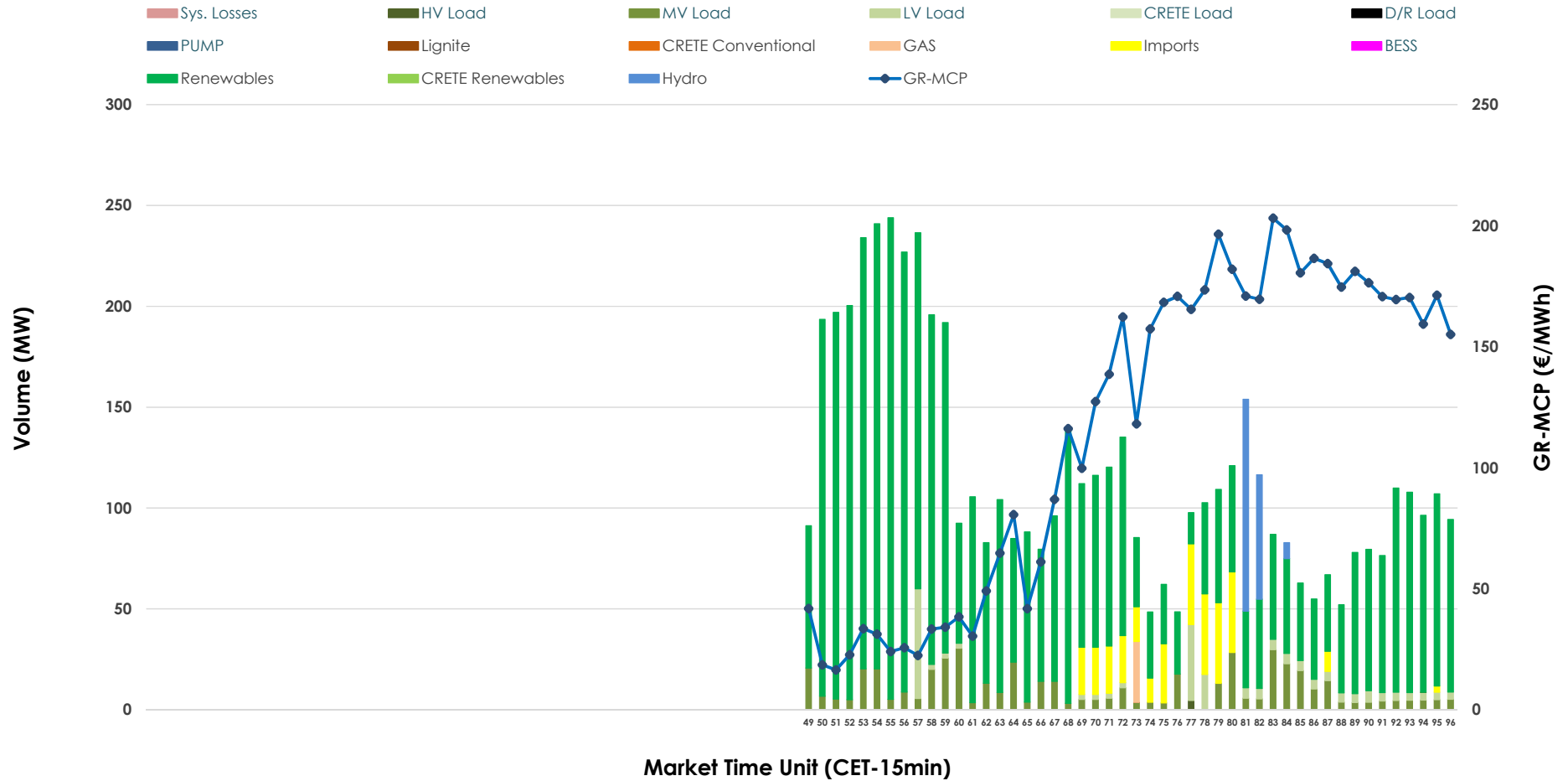


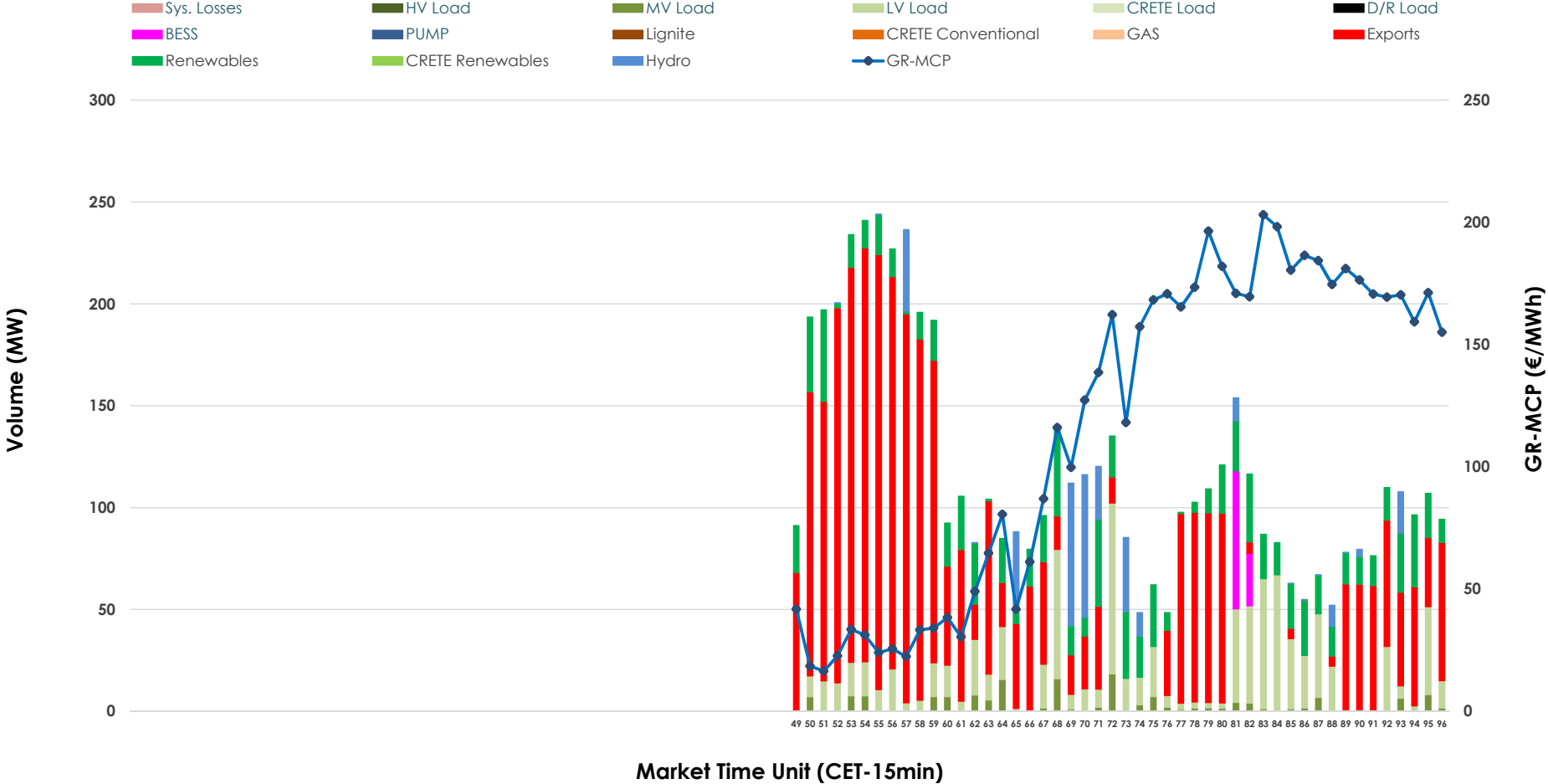


# IDA '3' Market Outlook

09.06.2026 IDA '3' Market - Sell



09.06.2026 IDA '3' Market - Buy



### GR Bidding Zone Weekly Figures

Delivery Day	03.06	04.06	05.06	06.06	07.06	08.06	09.06
	👇 -12%	👆 17%	👆 20%	👇 -44%	👉 0%	👆 72%	👉 1%
<b>Avg.MCP (€/MWh)</b>	84.90	99.36	119.09	66.44	66.65	114.70	115.70
<b>Max.MCP (€/MWh)</b>	151.86	203.24	180.60	150.74	149.92	195.70	203.07
<b>Min.MCP (€/MWh)</b>	7.31	3.05	48.90	-32.00	-11.56	6.55	16.45
	👆 21%	👇 -16%	👇 -32%	👆 97%	👇 -38%	👆 26%	👆 40%
<b>Tot.Vol(GWh)</b>	2.33	1.95	1.32	2.60	1.62	2.04	2.85

### Trades by Order Type

Delivery Day		03.06	04.06	05.06	06.06	07.06	08.06	09.06	
<b>Ord Price Type</b>		<b>Sell &amp; Buy Trades in (GWh) per Price Type</b>							<b>(%)</b>
<b>PPT</b>	(S)	0.000	0.000	0.000	0.000	0.000	0.000	0.000	0.00%
<b>HBD</b>	(S)	0.916	0.423	0.378	0.223	0.713	0.529	1.346	94.30%
<b>BLK</b>	(S)	0.000	0.000	0.000	0.000	0.000	0.000	0.000	0.00%
<b>CPL</b>	(S)	0.251	0.552	0.282	1.079	0.097	0.492	0.081	5.70%
<b>PPT</b>	(B)	0.000	0.000	0.000	0.000	0.000	0.000	0.000	0.00%
<b>HBD</b>	(B)	0.667	0.905	0.504	1.301	0.500	1.007	0.618	43.32%
<b>BLK</b>	(B)	0.000	0.000	0.000	0.000	0.000	0.000	0.000	0.00%
<b>CPL</b>	(B)	0.500	0.069	0.156	0.000	0.310	0.014	0.809	56.68%
		<b>Sell &amp; Buy Orders Traded per Price Type</b>							<b>(%)</b>
<b>PPT</b>	(S)	0	0	0	0	0	0	0	0.00%
<b>HBD</b>	(S)	244	146	238	58	79	133	237	100.00%
<b>BLK</b>	(S)	0	0	0	0	0	0	0	0.00%
<b>PPT</b>	(B)	0	0	0	0	0	0	0	0.00%
<b>HBD</b>	(B)	260	273	216	273	172	255	274	100.00%
<b>BLK</b>	(B)	0	0	0	0	0	0	0	0.00%

- MCP** Market Clearing Price (€/MWh)
- PPT** Priority Price-Taking
- HBD** Hybrid
- BLK** Block
- CPL** Market Coupling Flow

### Trade's Volume Mix

	Sell - MWh	Buy - MWh	
<b>Lignite</b> (0.0%)	0	0	(0.0%)
<b>Crete Conv.</b> (0.0%)	0	0	(0.0%)
<b>Gas</b> (0.5%)	8	0	(0.0%)
<b>Hydro</b> (3.1%)	44	85	(5.9%)
<b>Imports</b> (5.7%)	81		
<b>RES</b> (78.3%)	1,118	237	(16.6%)
<b>Crete RES</b> (0.0%)	0	0	(0.0%)
<b>BESS</b> (0.0%)	0	23	(1.6%)
<b>HV Load</b> (0.1%)	1	0	(0.0%)
<b>MV Load</b> (8.8%)	126	40	(2.8%)
<b>LV Load</b> (3.5%)	50	233	(16.4%)
<b>Crete Load</b> (0.0%)	0	0	(0.0%)
<b>Pumping</b> (0.0%)	0	0	(0.0%)
<b>Exports</b>		809	(56.7%)
<b>Sys.Losses</b> (0.0%)	0	0	(0.0%)
<b>D/R Load</b> (0.0%)	0	0	(0.0%)

