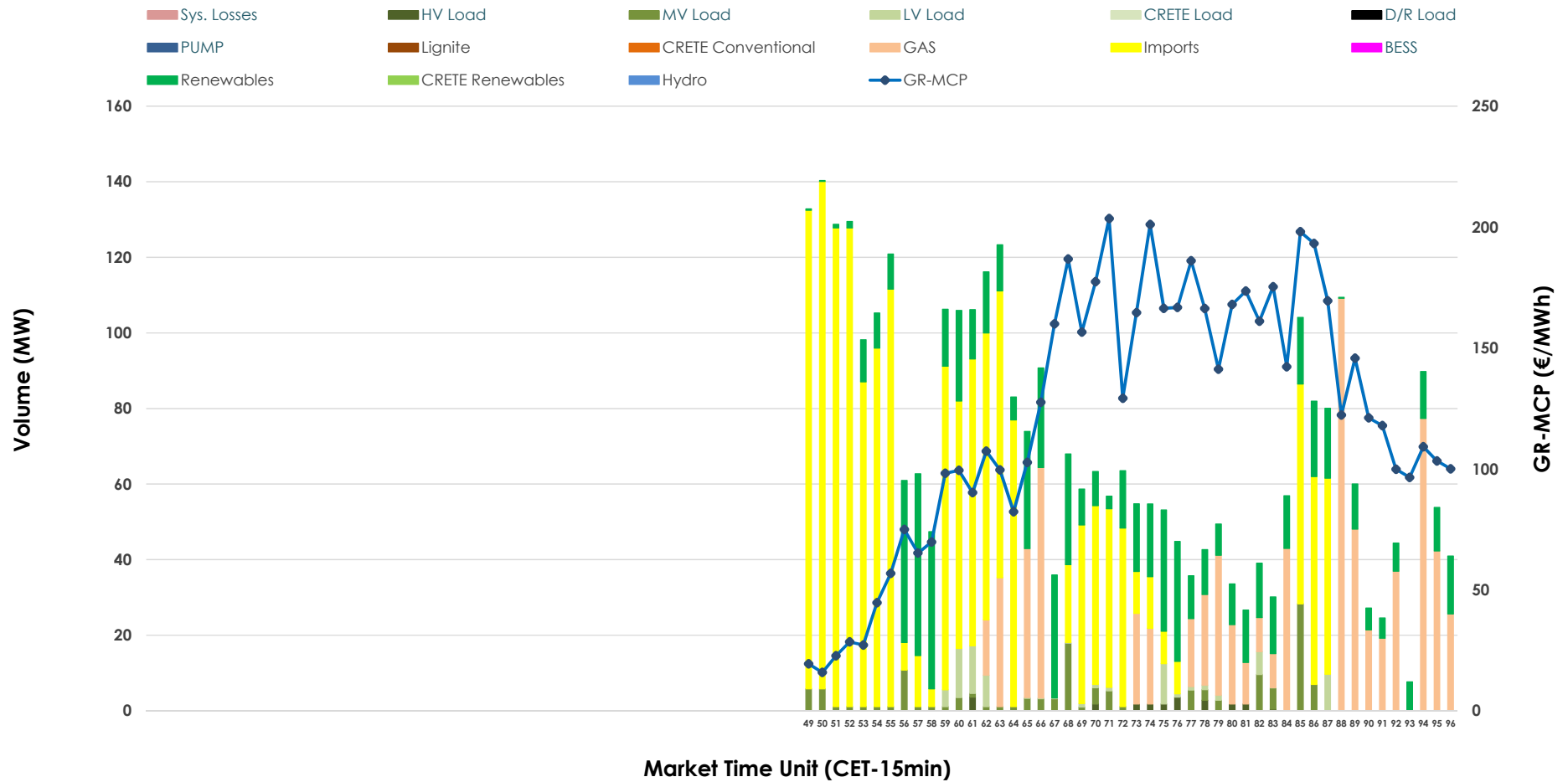


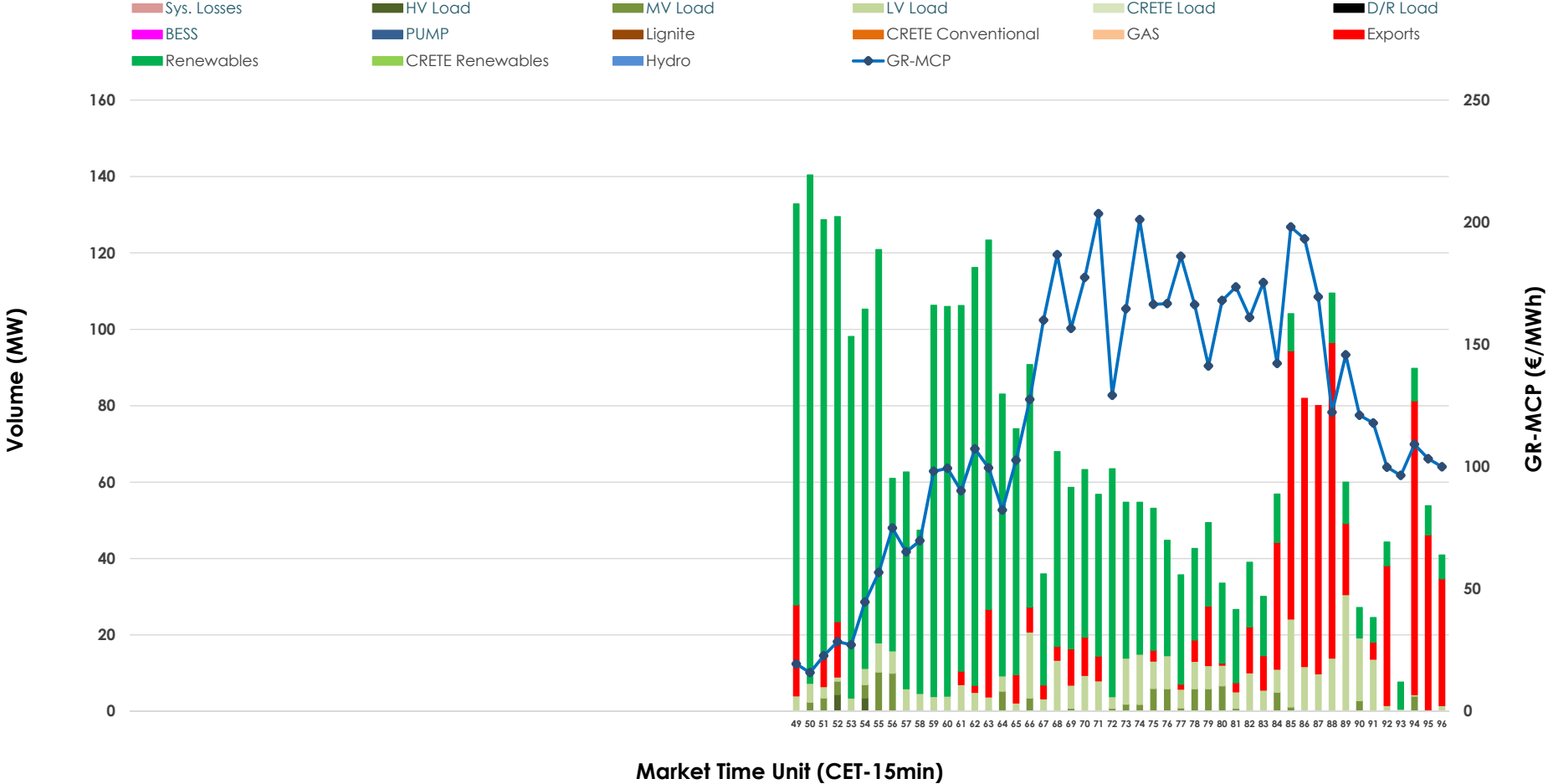


IDA '3' Market Outlook

24.03.2026 IDA '3' Market - Sell



24.03.2026 IDA '3' Market - Buy



GR Bidding Zone Weekly Figures

Delivery Day	18.03	19.03	20.03	21.03	22.03	23.03	24.03
	👇 -17%	👆 42%	👇 -2%	👇 -17%	👇 -14%	👆 79%	👇 -29%
Avg.MCP (€/MWh)	96.32	136.60	133.90	111.20	95.13	170.66	121.58
Max.MCP (€/MWh)	167.86	208.87	233.89	164.90	188.64	292.57	203.53
Min.MCP (€/MWh)	-1.80	81.08	63.67	23.69	-9.13	88.57	15.87
	👆 114%	👇 -44%	👉 10%	👆 68%	👇 -64%	👉 20%	👉 0%
Tot.Vol(GWh)	3.90	2.17	2.39	4.02	1.43	1.71	1.71

Trades by Order Type

Delivery Day		18.03	19.03	20.03	21.03	22.03	23.03	24.03	
Ord Price Type		Sell & Buy Trades in (GWh) per Price Type							(%)
PPT	(S)	0.000	0.000	0.000	0.000	0.000	0.000	0.000	0.00%
HBD	(S)	0.722	0.520	1.020	1.230	0.638	0.817	0.430	50.26%
BLK	(S)	0.000	0.000	0.000	0.000	0.000	0.000	0.000	0.00%
CPL	(S)	1.228	0.563	0.176	0.778	0.078	0.039	0.426	49.74%
PPT	(B)	0.000	0.000	0.000	0.000	0.000	0.000	0.000	0.00%
HBD	(B)	1.923	0.997	0.695	1.920	0.524	0.528	0.677	79.16%
BLK	(B)	0.000	0.000	0.000	0.000	0.000	0.000	0.000	0.00%
CPL	(B)	0.027	0.086	0.501	0.088	0.192	0.328	0.178	20.84%
		Sell & Buy Orders Traded per Price Type							(%)
PPT	(S)	0	0	0	0	0	0	0	0.00%
HBD	(S)	180	257	213	149	224	168	158	100.00%
BLK	(S)	0	0	0	0	0	0	0	0.00%
PPT	(B)	0	0	0	0	0	0	0	0.00%
HBD	(B)	290	226	328	402	221	216	273	100.00%
BLK	(B)	0	0	0	0	0	0	0	0.00%

- MCP** Market Clearing Price (€/MWh)
- PPT** Priority Price-Taking
- HBD** Hybrid
- BLK** Block
- CPL** Market Coupling Flow

Trade's Volume Mix

	Sell - MWh	Buy - MWh	
Lignite (0.0%)	0	0	(0.0%)
Crete Conv. (0.0%)	0	0	(0.0%)
Gas (21.8%)	186	0	(0.0%)
Hydro (0.0%)	0	0	(0.0%)
Imports (49.7%)	426		
RES (21.7%)	185	565	(66.0%)
Crete RES (0.0%)	0	0	(0.0%)
BESS (0.0%)	0	0	(0.0%)
HV Load (0.6%)	5	2	(0.2%)
MV Load (4.1%)	35	24	(2.8%)
LV Load (2.1%)	18	87	(10.1%)
Crete Load (0.0%)	0	0	(0.0%)
Pumping (0.0%)	0	0	(0.0%)
Exports		178	(20.8%)
Sys.Losses (0.0%)	0	0	(0.0%)
D/R Load (0.0%)	0	0	(0.0%)

