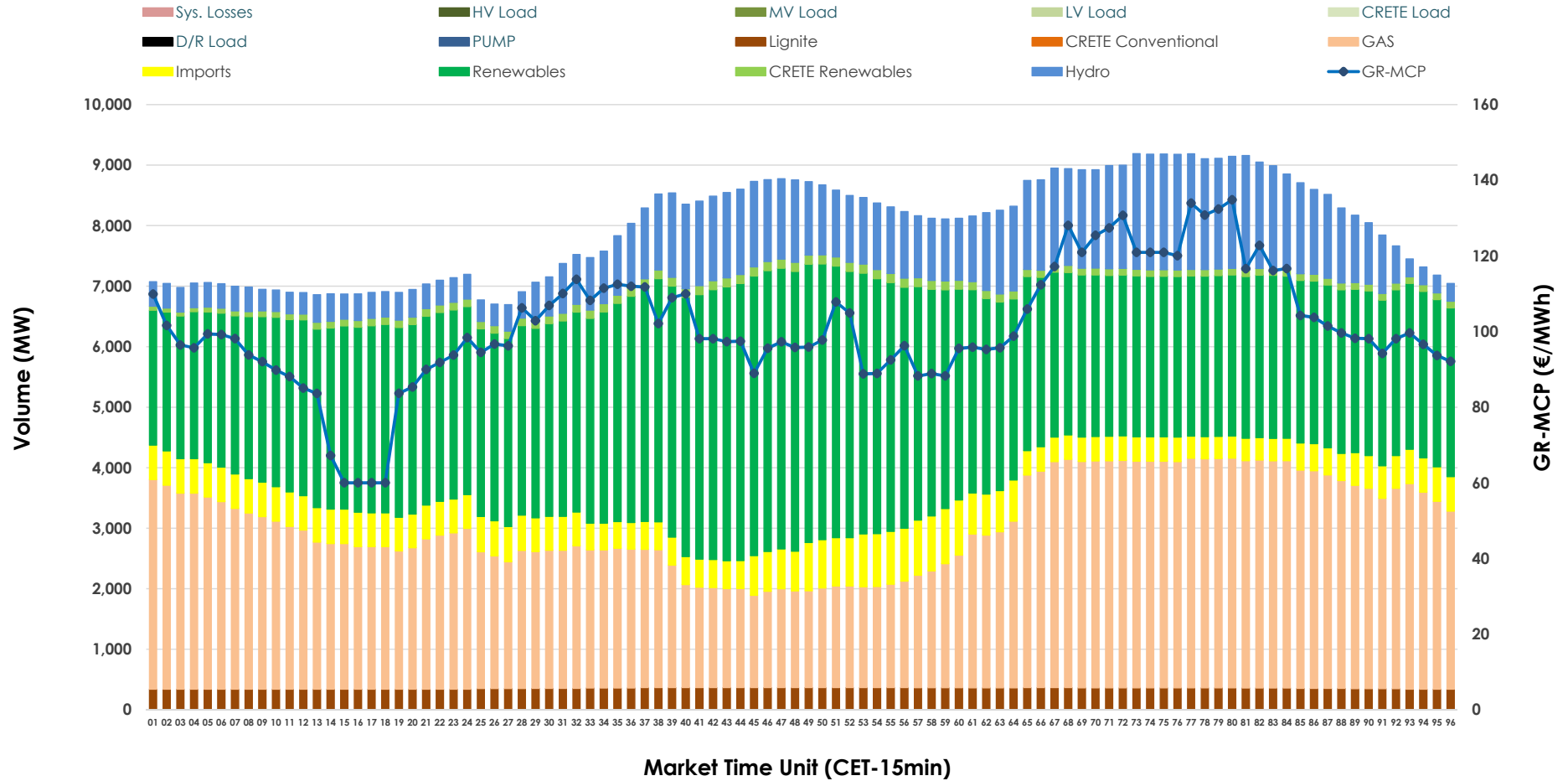


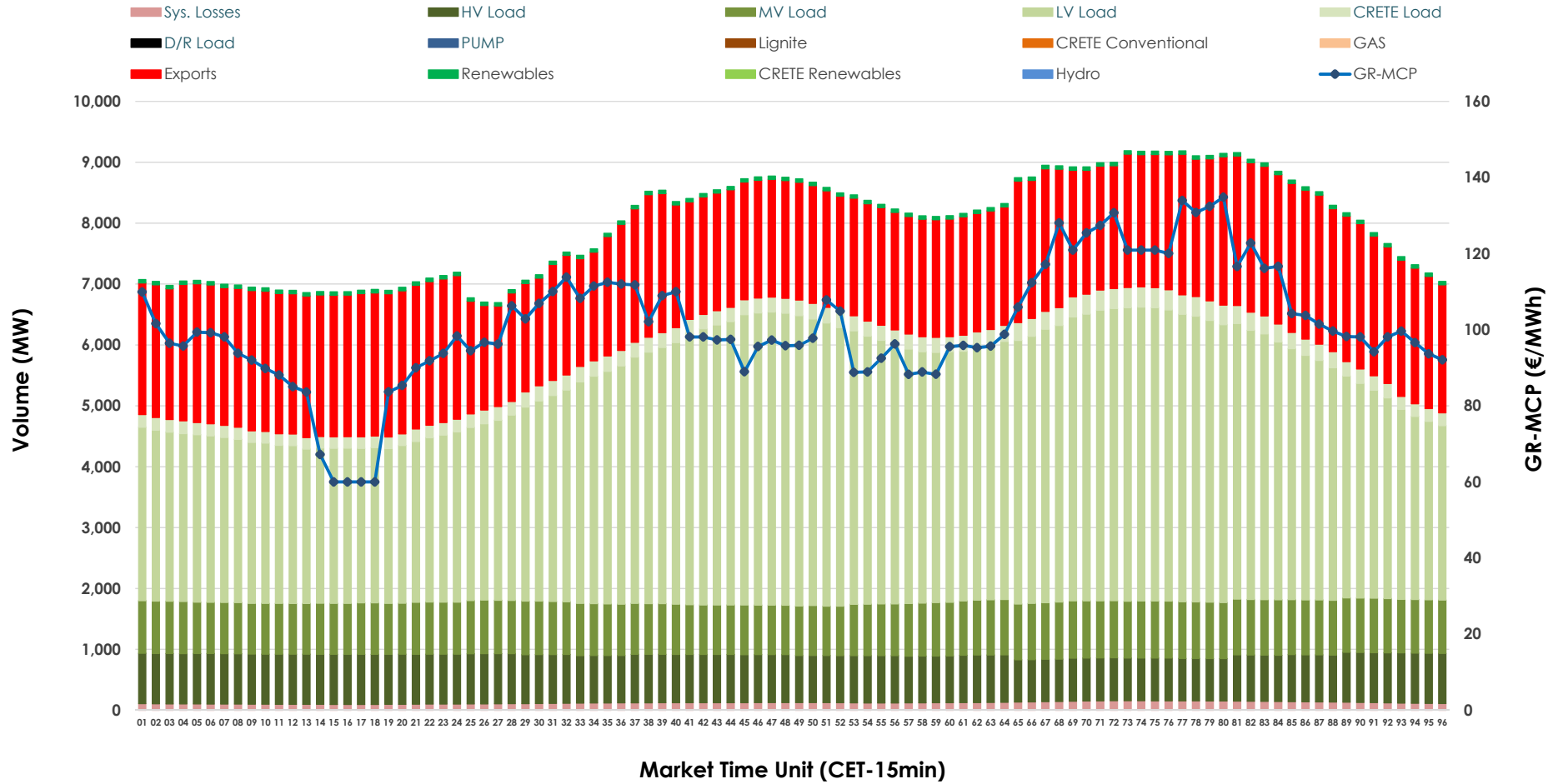


# Day-Ahead Market Outlook

01.02.2026 Day-Ahead Market - Sell



### 01.02.2026 Day-Ahead Market - Buy



### GR Bidding Zone Weekly Figures

Delivery Day	26.01	27.01	28.01	29.01	30.01	31.01	01.02
	↗ 4%	↗ 29%	↘ -31%	↗ 2%	↗ 1%	↗ 8%	↘ -4%
<b>Avg.MCP (€/MWh)</b>	106.73	137.69	94.63	96.93	97.48	105.72	101.14
<b>Max.MCP (€/MWh)</b>	209.84	284.06	157.84	178.52	162.33	155.04	134.83
<b>Min.MCP (€/MWh)</b>	84.90	83.39	25.00	0.01	32.69	47.50	60.00
	↗ 12%	↘ 0%	↗ 1%	↘ 0%	↘ -4%	↘ -5%	↘ -2%
<b>Tot.Vol(GWh)</b>	424.36	422.24	426.74	427.94	410.83	391.47	383.04

### Trades by Order Type

Delivery Day		26.01	27.01	28.01	29.01	30.01	31.01	01.02	
<b>Ord Price Type</b>		<b>Sell &amp; Buy Trades in (GWh) per Price Type</b>							<b>(%)</b>
<b>PPT</b>	(S)	99.373	85.184	97.501	103.603	94.378	86.154	93.785	48.97%
<b>HBD</b>	(S)	79.324	71.927	76.448	69.885	77.379	63.490	61.041	31.87%
<b>BLK</b>	(S)	33.481	52.021	39.420	40.479	33.660	46.080	34.935	18.24%
<b>CPL</b>	(S)	0.000	1.990	0.000	0.000	0.000	0.010	1.760	0.92%
<b>PPT</b>	(B)	15.470	14.688	15.173	14.595	14.582	13.273	12.883	6.73%
<b>HBD</b>	(B)	154.542	156.463	156.132	154.909	149.993	144.217	139.193	72.68%
<b>BLK</b>	(B)	0.000	0.000	0.000	0.000	0.000	0.000	0.000	0.00%
<b>CPL</b>	(B)	42.167	39.970	42.063	44.464	40.843	38.244	39.446	20.60%
		<b>Sell &amp; Buy Orders Traded per Price Type</b>							<b>(%)</b>
<b>PPT</b>	(S)	2083	2113	2121	2169	2166	2238	2123	44.48%
<b>HBD</b>	(S)	2852	2983	2843	2630	2758	2948	2632	55.14%
<b>BLK</b>	(S)	13	18	14	19	15	17	18	0.38%
<b>PPT</b>	(B)	2322	2294	2276	2270	2272	2230	2337	37.53%
<b>HBD</b>	(B)	4028	4146	3957	3992	4044	3974	3890	62.47%
<b>BLK</b>	(B)	0	0	0	0	0	0	0	0.00%

**MCP** Market Clearing Price (€/MWh)  
**PPT** Priority Price-Taking  
**HBD** Hybrid  
**BLK** Block  
**CPL** Market Coupling Flow

### Trade's Volume Mix

		Sell - MWh	Buy - MWh	
<b>Lignite</b>	(4.4%)	8,508	0	(0.0%)
<b>Crete Conv.</b>	(0.0%)	0	0	(0.0%)
<b>Gas</b>	(34.0%)	65,181	0	(0.0%)
<b>Hydro</b>	(12.8%)	24,472	0	(0.0%)
<b>Imports</b>	(7.0%)	13,324		
<b>RES</b>	(40.3%)	77,135	1,309	(0.7%)
<b>Crete RES</b>	(1.5%)	2,902	0	(0.0%)
<b>HV Load</b>	(0.0%)	0	18,805	(9.8%)
<b>MV Load</b>	(0.0%)	0	20,882	(10.9%)
<b>LV Load</b>	(0.0%)	0	90,309	(47.2%)
<b>Crete Load</b>	(0.0%)	0	5,931	(3.1%)
<b>Pumping</b>	(0.0%)	0	0	(0.0%)
<b>Exports</b>			51,355	(26.8%)
<b>Sys.Losses</b>	(0.0%)	0	2,932	(1.5%)
<b>D/R Load</b>	(0.0%)	0	0	(0.0%)

