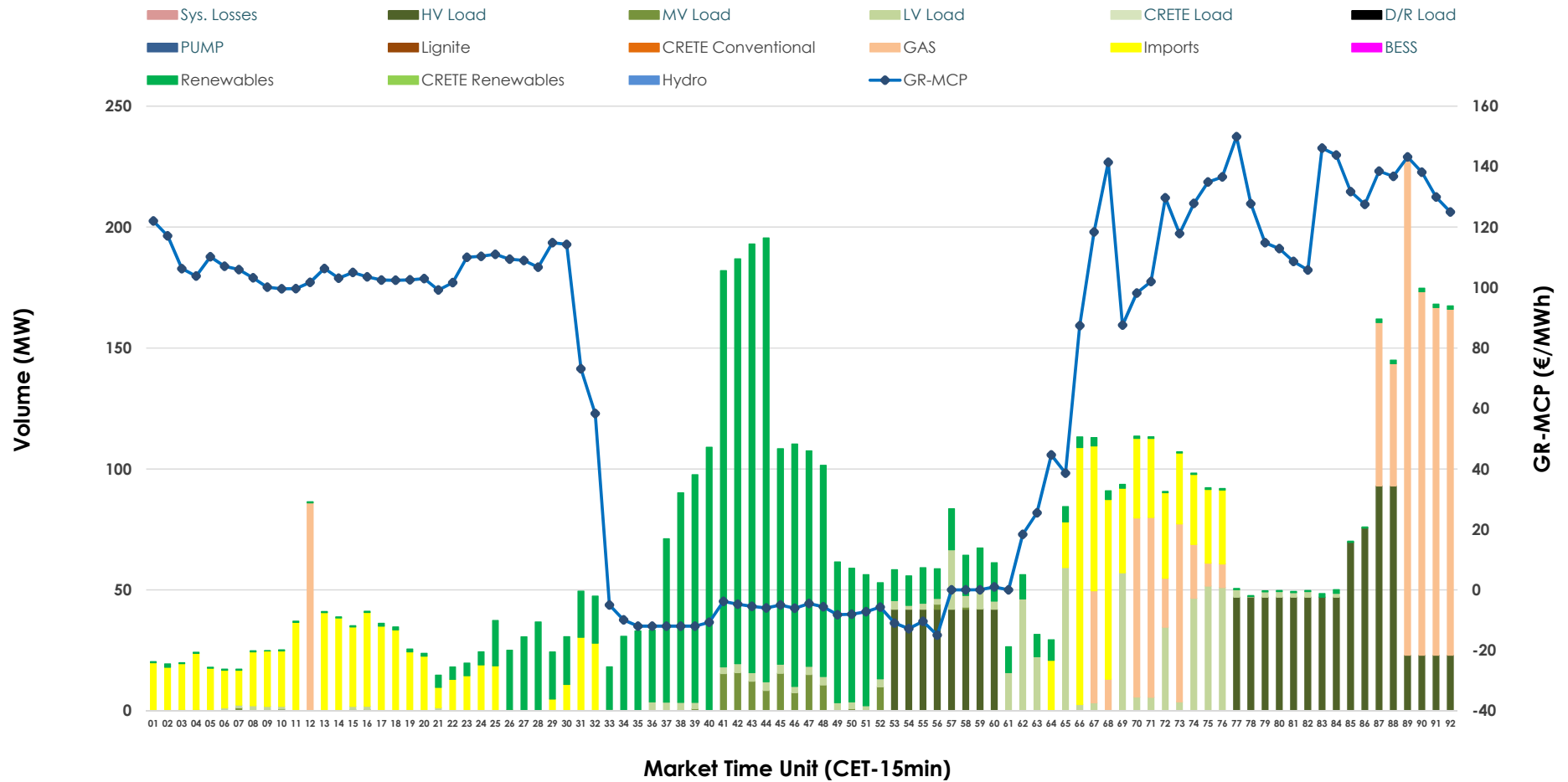


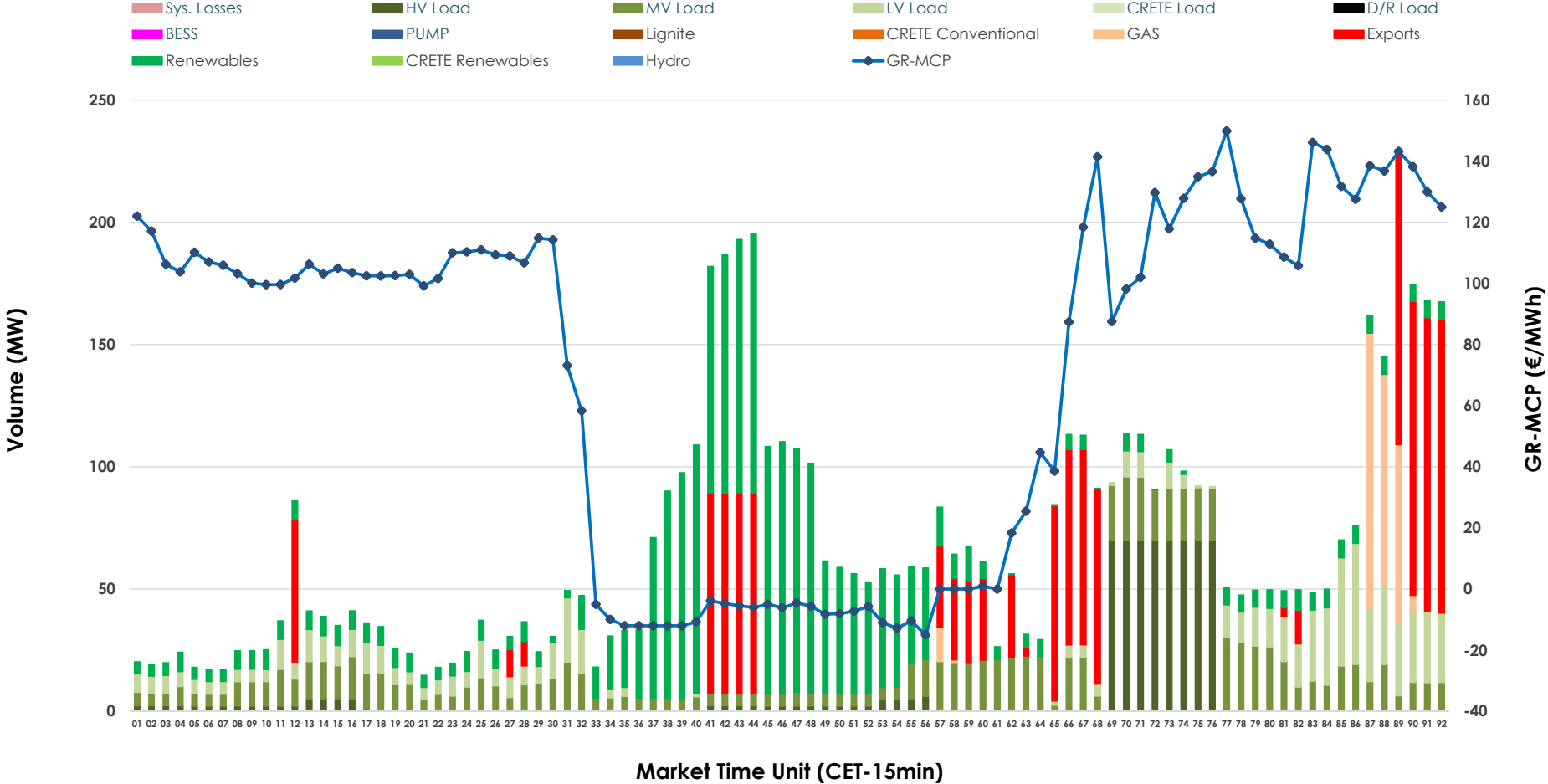


IDA '1' Market Outlook

29.03.2026 IDA '1' Market - Sell



29.03.2026 IDA '1' Market - Buy



GR Bidding Zone Weekly Figures

Delivery Day	23.03	24.03	25.03	26.03	27.03	28.03	29.03
	↑ 76%	↓ -26%	↓ -29%	↑ 7%	↑ 14%	↓ -9%	↓ -16%
Avg.MCP (€/MWh)	146.60	108.40	77.08	82.14	93.92	85.15	71.83
Max.MCP (€/MWh)	279.92	206.78	206.42	175.68	158.93	168.64	149.89
Min.MCP (€/MWh)	62.90	9.41	-8.09	-5.14	-2.58	6.75	-14.99
	↓ -26%	↑ 26%	↑ 15%	↓ -14%	↓ -8%	↓ -9%	
Tot.Vol(GWh)	4.08	3.04	3.82	4.41	3.77	3.48	3.15

Trades by Order Type

Delivery Day		23.03	24.03	25.03	26.03	27.03	28.03	29.03	
Ord Price Type		Sell & Buy Trades in (GWh) per Price Type							(%)
PPT	(S)	0.000	0.000	0.000	0.000	0.000	0.000	0.000	0.00%
HBD	(S)	1.492	1.145	1.727	2.119	1.303	1.243	1.282	81.26%
BLK	(S)	0.000	0.000	0.000	0.000	0.000	0.000	0.000	0.00%
CPL	(S)	0.546	0.374	0.185	0.084	0.584	0.494	0.296	18.74%
PPT	(B)	0.000	0.000	0.000	0.000	0.000	0.000	0.000	0.00%
HBD	(B)	1.585	1.063	1.606	1.166	1.722	1.233	1.228	77.88%
BLK	(B)	0.000	0.000	0.000	0.000	0.000	0.000	0.000	0.00%
CPL	(B)	0.453	0.455	0.305	1.037	0.165	0.505	0.349	22.12%
		Sell & Buy Orders Traded per Price Type							(%)
PPT	(S)	0	0	0	0	0	0	0	0.00%
HBD	(S)	219	267	234	203	261	290	326	100.00%
BLK	(S)	0	0	0	0	0	0	0	0.00%
PPT	(B)	0	0	0	0	0	0	0	0.00%
HBD	(B)	773	794	865	738	860	694	812	100.00%
BLK	(B)	0	0	0	0	0	0	0	0.00%

- MCP** Market Clearing Price (€/MWh)
- PPT** Priority Price-Taking
- HBD** Hybrid
- BLK** Block
- CPL** Market Coupling Flow

Trade's Volume Mix

	Sell - MWh	Buy - MWh	
Lignite (0.0%)	0	0	(0.0%)
Crete Conv. (0.0%)	0	0	(0.0%)
Gas (18.9%)	297	74	(4.7%)
Hydro (0.0%)	0	0	(0.0%)
Imports (18.7%)	296		
RES (34.0%)	537	507	(32.1%)
Crete RES (0.0%)	0	0	(0.0%)
BESS (0.0%)	0	0	(0.0%)
HV Load (18.0%)	284	163	(10.3%)
MV Load (1.9%)	30	290	(18.4%)
LV Load (8.5%)	134	195	(12.4%)
Crete Load (0.0%)	0	0	(0.0%)
Pumping (0.0%)	0	0	(0.0%)
Exports		349	(22.1%)
Sys.Losses (0.0%)	0	0	(0.0%)
D/R Load (0.0%)	0	0	(0.0%)

