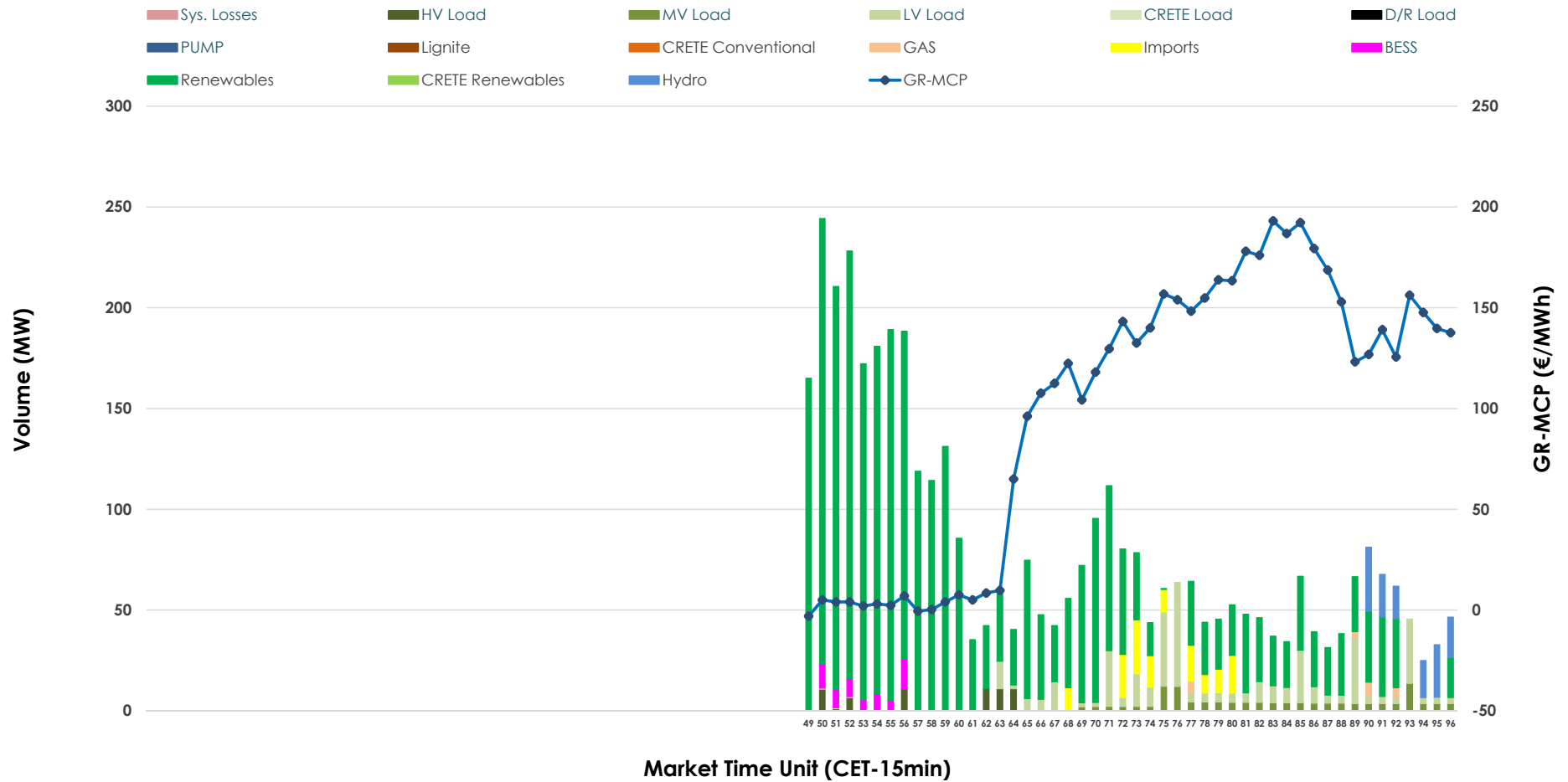


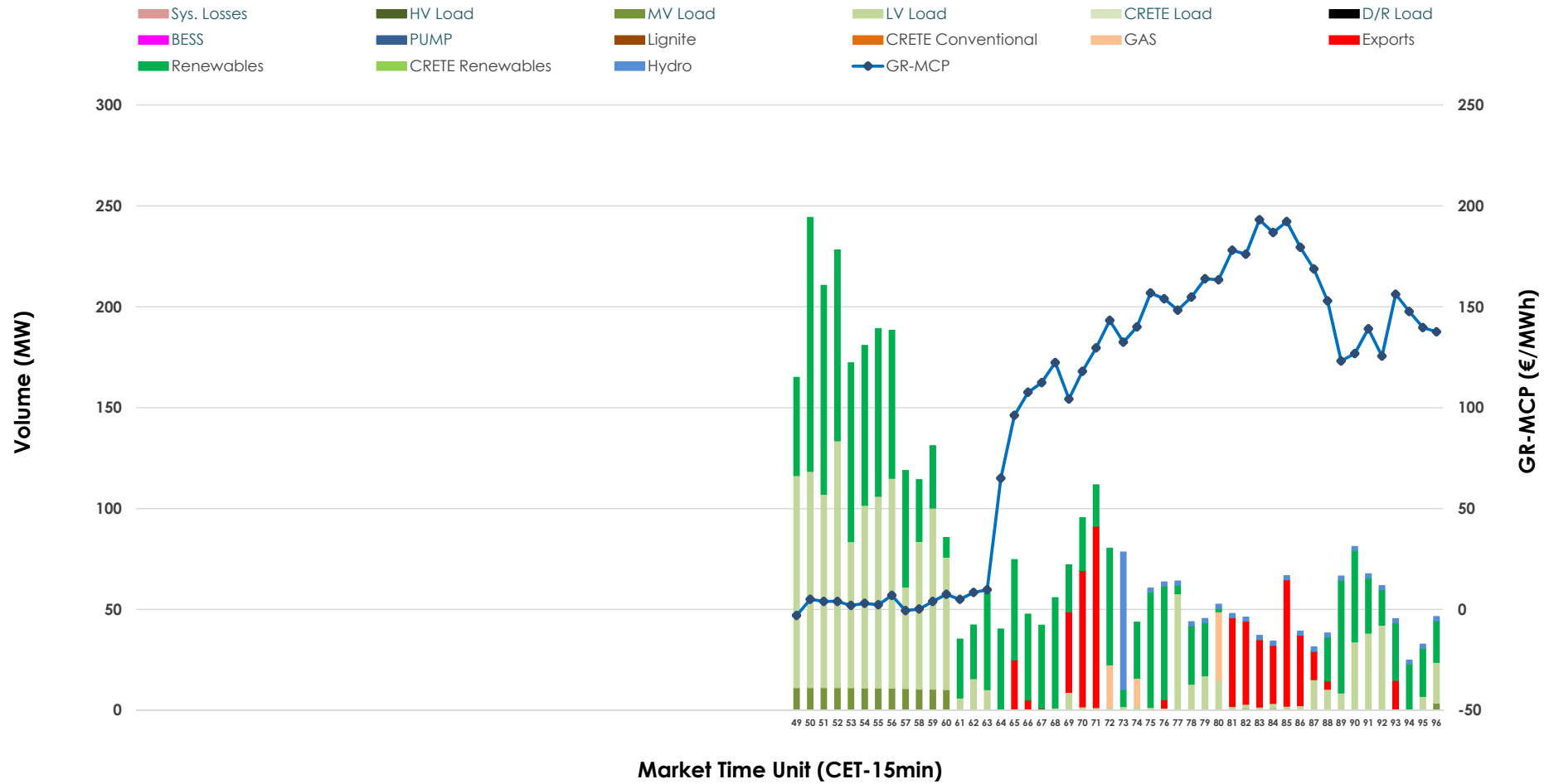


IDA '3' Market Outlook

13.05.2026 IDA '3' Market - Sell



13.05.2026 IDA '3' Market - Buy



GR Bidding Zone Weekly Figures

Delivery Day	07.05	08.05	09.05	10.05	11.05	12.05	13.05
	↗ 22%	↘ -3%	↘ -24%	↘ -5%	↗ 24%	↘ -36%	↗ 44%
Avg.MCP (€/MWh)	124.57	120.81	91.75	87.28	108.59	69.35	99.87
Max.MCP (€/MWh)	174.56	163.91	183.81	163.81	195.45	186.70	193.09
Min.MCP (€/MWh)	100.57	70.07	-5.00	4.99	20.00	0.90	-3.00
	↗ 54%	↘ -43%	↘ -21%	↗ 2%	↗ 73%	↗ 4%	↘ -1%
Tot.Vol(GWh)	2.43	1.39	1.10	1.13	1.95	2.02	2.00

Trades by Order Type

Delivery Day		07.05	08.05	09.05	10.05	11.05	12.05	13.05	
Ord Price Type		Sell & Buy Trades in (GWh) per Price Type							(%)
PPT	(S)	0.000	0.000	0.000	0.000	0.000	0.000	0.000	0.00%
HBD	(S)	0.750	0.592	0.537	0.502	0.661	1.009	0.965	96.40%
BLK	(S)	0.000	0.000	0.000	0.000	0.000	0.000	0.000	0.00%
CPL	(S)	0.465	0.103	0.013	0.062	0.312	0.000	0.036	3.60%
PPT	(B)	0.000	0.000	0.000	0.000	0.000	0.000	0.000	0.00%
HBD	(B)	0.929	0.466	0.543	0.531	0.736	0.844	0.874	87.28%
BLK	(B)	0.000	0.000	0.000	0.000	0.000	0.000	0.000	0.00%
CPL	(B)	0.286	0.229	0.007	0.033	0.237	0.165	0.127	12.72%
		Sell & Buy Orders Traded per Price Type							(%)
PPT	(S)	0	0	0	0	0	0	0	0.00%
HBD	(S)	163	164	105	204	203	185	254	100.00%
BLK	(S)	0	0	0	0	0	0	0	0.00%
PPT	(B)	0	0	0	0	0	0	0	0.00%
HBD	(B)	223	198	261	169	135	115	183	100.00%
BLK	(B)	0	0	0	0	0	0	0	0.00%

- MCP** Market Clearing Price (€/MWh)
- PPT** Priority Price-Taking
- HBD** Hybrid
- BLK** Block
- CPL** Market Coupling Flow

Trade's Volume Mix

	Sell - MWh	Buy - MWh	
Lignite (0.0%)	0	0	(0.0%)
Crete Conv. (0.0%)	0	0	(0.0%)
Gas (0.5%)	5	17	(1.7%)
Hydro (3.3%)	33	28	(2.8%)
Imports (3.6%)	36		
RES (77.1%)	772	440	(43.9%)
Crete RES (0.0%)	0	0	(0.0%)
BESS (1.6%)	16	0	(0.0%)
HV Load (1.6%)	16	0	(0.0%)
MV Load (3.1%)	31	34	(3.4%)
LV Load (9.2%)	92	355	(35.4%)
Crete Load (0.0%)	0	0	(0.0%)
Pumping (0.0%)	0	0	(0.0%)
Exports		127	(12.7%)
Sys.Losses (0.0%)	0	0	(0.0%)
D/R Load (0.0%)	0	0	(0.0%)

