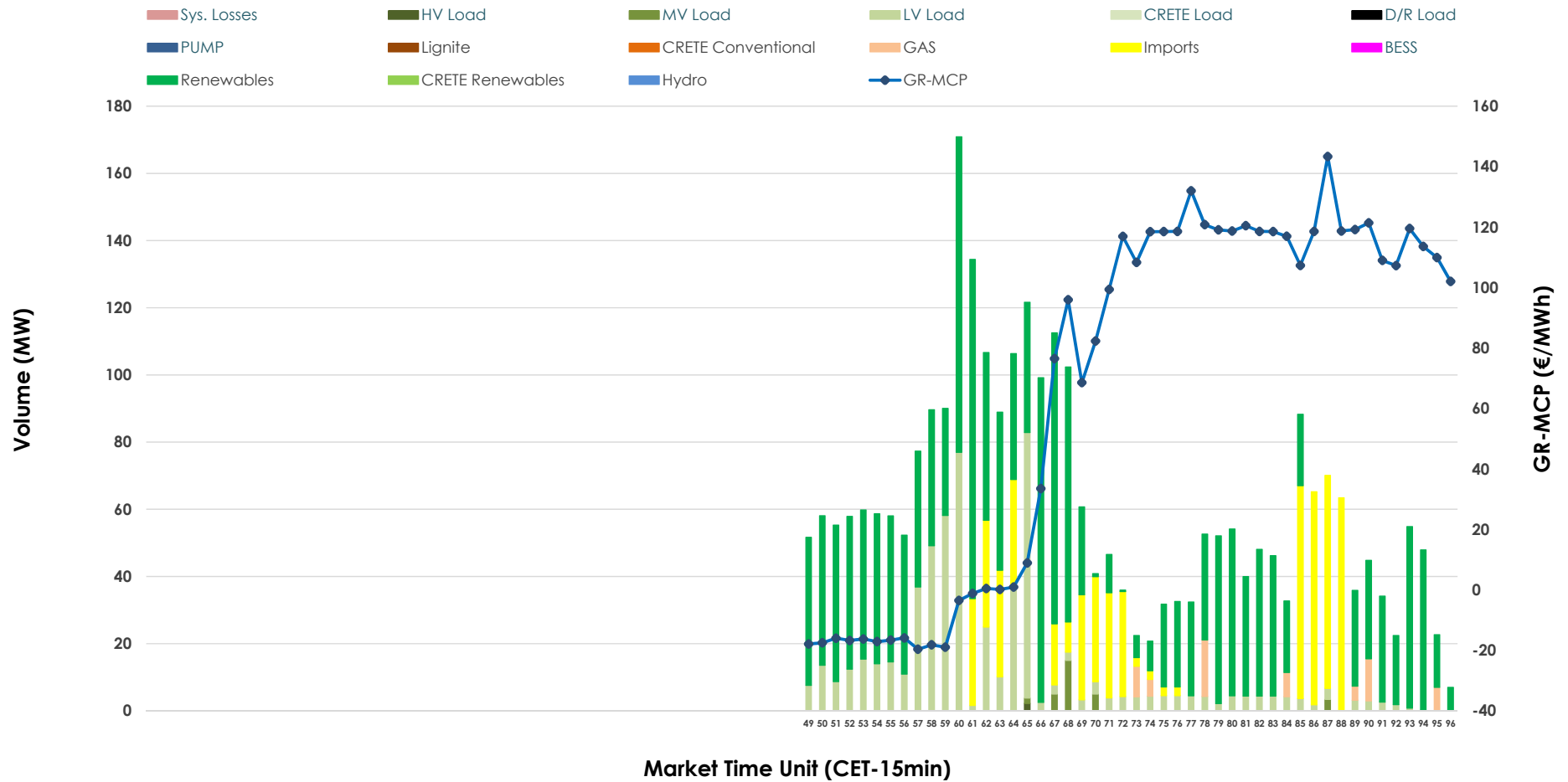


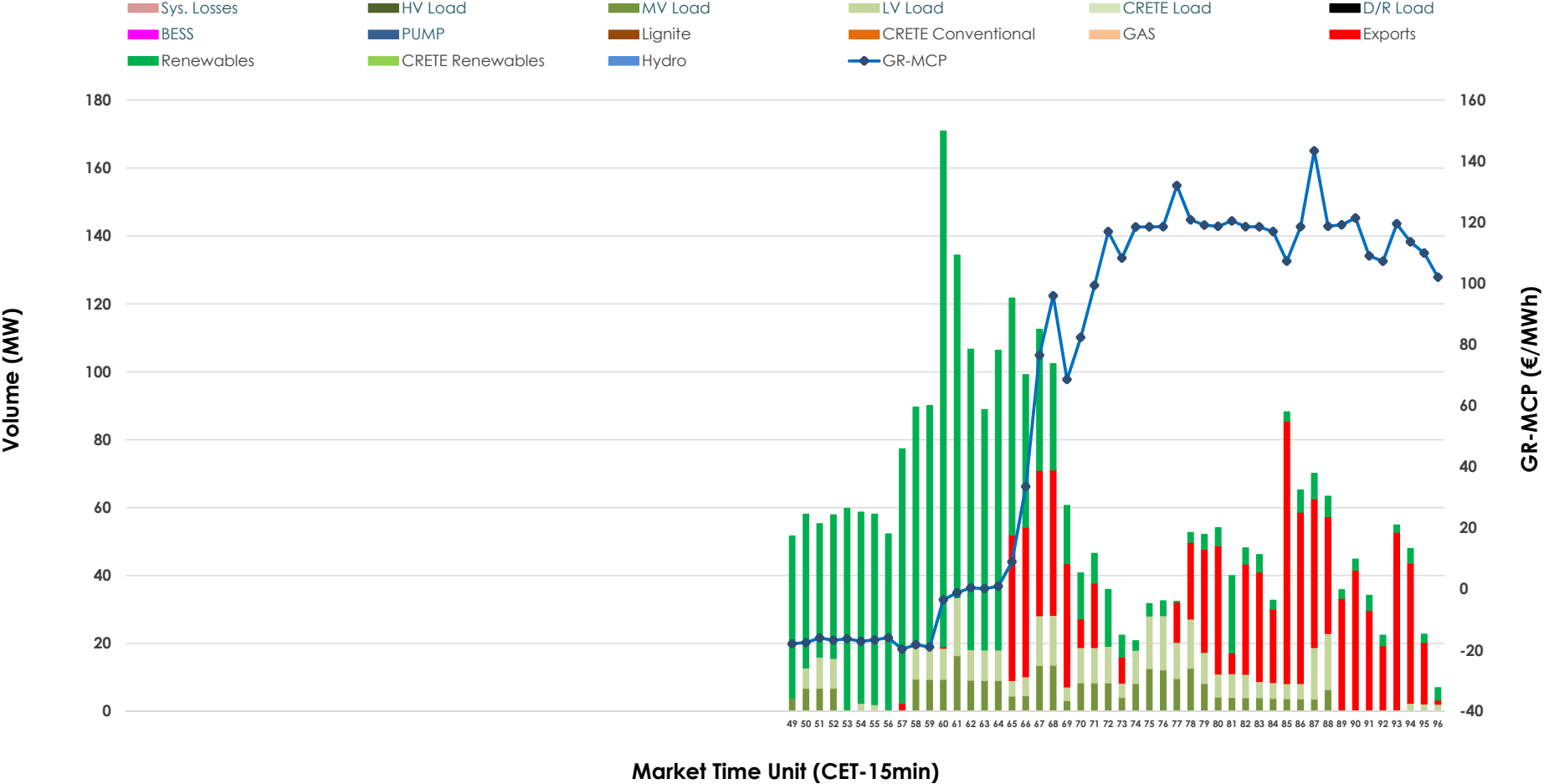


IDA '3' Market Outlook

20.04.2026 IDA '3' Market - Sell



20.04.2026 IDA '3' Market - Buy



GR Bidding Zone Weekly Figures

Delivery Day	14.04	15.04	16.04	17.04	18.04	19.04	20.04
	↑ 40%	↓ -10%	↓ -29%	↓ -27%	→ -1%	→ 0%	→ 0%
Avg.MCP (€/MWh)	141.87	128.24	91.53	67.04	66.52	66.61	66.82
Max.MCP (€/MWh)	267.95	175.20	206.60	167.98	142.28	163.50	143.35
Min.MCP (€/MWh)	79.90	84.00	11.22	-18.48	-14.93	-18.30	-19.65
	↗ 3%	↑ 200%	↓ -39%	↓ -32%	↓ -4%	↓ -12%	↓ -16%
Tot.Vol(GWh)	1.67	5.00	3.05	2.08	2.00	1.77	1.48

Trades by Order Type

Delivery Day		14.04	15.04	16.04	17.04	18.04	19.04	20.04	
Ord Price Type		Sell & Buy Trades in (GWh) per Price Type							(%)
PPT	(S)	0.000	0.000	0.000	0.000	0.000	0.000	0.000	0.00%
HBD	(S)	0.587	0.184	0.399	0.935	0.442	0.612	0.603	81.62%
BLK	(S)	0.000	0.000	0.000	0.000	0.000	0.000	0.000	0.00%
CPL	(S)	0.248	2.318	1.128	0.107	0.560	0.272	0.136	18.38%
PPT	(B)	0.000	0.000	0.000	0.000	0.000	0.000	0.000	0.00%
HBD	(B)	0.280	2.194	1.261	0.565	0.870	0.282	0.518	70.05%
BLK	(B)	0.000	0.000	0.000	0.000	0.000	0.000	0.000	0.00%
CPL	(B)	0.554	0.308	0.265	0.477	0.132	0.601	0.221	29.95%
		Sell & Buy Orders Traded per Price Type							(%)
PPT	(S)	0	0	0	0	0	0	0	0.00%
HBD	(S)	265	111	185	172	147	164	152	100.00%
BLK	(S)	0	0	0	0	0	0	0	0.00%
PPT	(B)	0	0	0	0	0	0	0	0.00%
HBD	(B)	134	522	525	196	202	163	248	100.00%
BLK	(B)	0	0	0	0	0	0	0	0.00%

- MCP** Market Clearing Price (€/MWh)
- PPT** Priority Price-Taking
- HBD** Hybrid
- BLK** Block
- CPL** Market Coupling Flow

Trade's Volume Mix

	Sell - MWh	Buy - MWh	
Lignite (0.0%)	0	0	(0.0%)
Crete Conv. (0.0%)	0	0	(0.0%)
Gas (2.1%)	15	0	(0.0%)
Hydro (0.0%)	0	0	(0.0%)
Imports (18.4%)	136		
RES (59.4%)	439	368	(49.8%)
Crete RES (0.0%)	0	0	(0.0%)
BESS (0.0%)	0	0	(0.0%)
HV Load (0.1%)	1	0	(0.0%)
MV Load (1.0%)	8	67	(9.0%)
LV Load (19.1%)	141	83	(11.3%)
Crete Load (0.0%)	0	0	(0.0%)
Pumping (0.0%)	0	0	(0.0%)
Exports		221	(29.9%)
Sys.Losses (0.0%)	0	0	(0.0%)
D/R Load (0.0%)	0	0	(0.0%)

