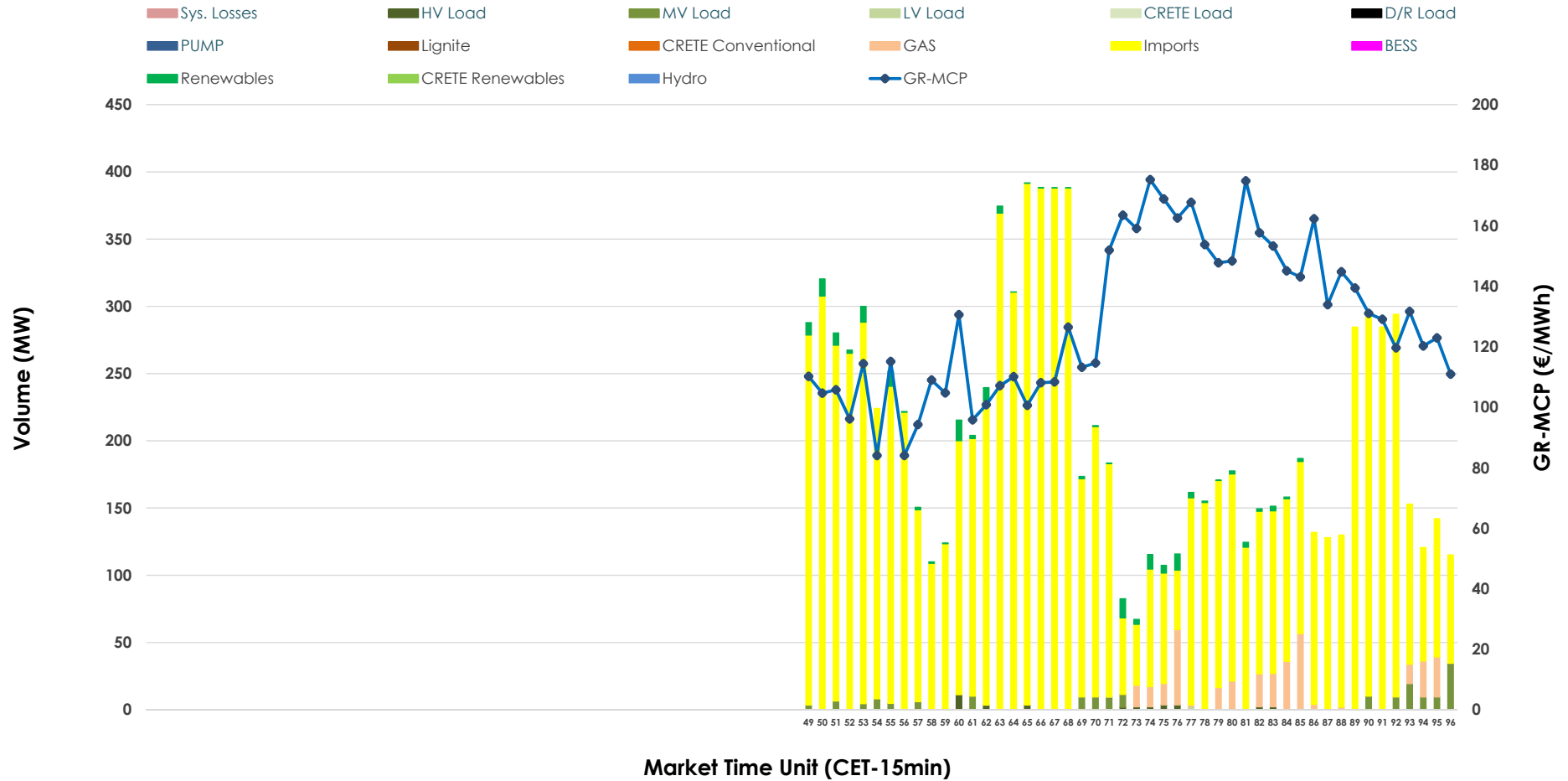


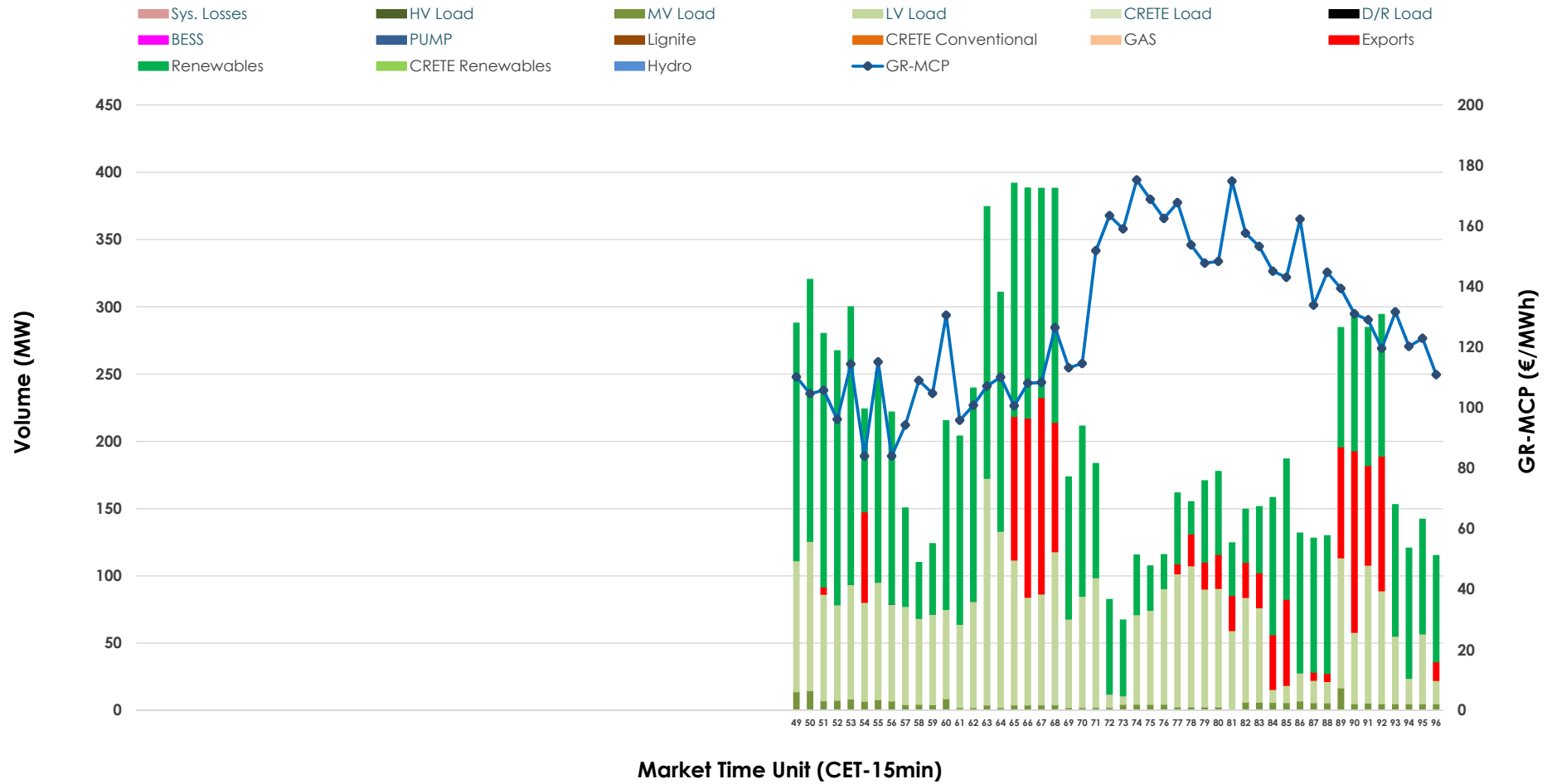


IDA '3' Market Outlook

15.04.2026 IDA '3' Market - Sell



15.04.2026 IDA '3' Market - Buy



GR Bidding Zone Weekly Figures

Delivery Day	09.04	10.04	11.04	12.04	13.04	14.04	15.04
	↗ 10%	→ 0%	↗ 20%	↘ -18%	↗ 24%	↗ 40%	↘ -10%
Avg.MCP (€/MWh)	83.16	83.51	99.89	81.48	101.24	141.87	128.24
Max.MCP (€/MWh)	186.44	184.91	176.97	162.05	170.39	267.95	175.20
Min.MCP (€/MWh)	-15.20	-9.97	24.04	-1.89	4.68	79.90	84.00
	↗ 13%	↗ 54%	↗ 27%	↘ -61%	↗ 7%	↗ 3%	↗ 200%
Tot.Vol(GWh)	1.99	3.06	3.89	1.52	1.63	1.67	5.00

Trades by Order Type

Delivery Day		09.04	10.04	11.04	12.04	13.04	14.04	15.04	
Ord Price Type		Sell & Buy Trades in (GWh) per Price Type							(%)
PPT	(S)	0.000	0.000	0.000	0.000	0.000	0.000	0.000	0.00%
HBD	(S)	0.819	1.338	0.419	0.568	0.675	0.587	0.184	7.35%
BLK	(S)	0.000	0.000	0.000	0.000	0.000	0.000	0.000	0.00%
CPL	(S)	0.177	0.192	1.528	0.193	0.139	0.248	2.318	92.65%
PPT	(B)	0.000	0.000	0.000	0.000	0.000	0.000	0.000	0.00%
HBD	(B)	0.173	0.392	1.885	0.426	0.551	0.280	2.194	87.70%
BLK	(B)	0.000	0.000	0.000	0.000	0.000	0.000	0.000	0.00%
CPL	(B)	0.823	1.138	0.062	0.335	0.263	0.554	0.308	12.30%
		Sell & Buy Orders Traded per Price Type							(%)
PPT	(S)	0	0	0	0	0	0	0	0.00%
HBD	(S)	257	176	161	209	116	265	111	100.00%
BLK	(S)	0	0	0	0	0	0	0	0.00%
PPT	(B)	0	0	0	0	0	0	0	0.00%
HBD	(B)	112	131	347	172	186	134	522	100.00%
BLK	(B)	0	0	0	0	0	0	0	0.00%

- MCP** Market Clearing Price (€/MWh)
- PPT** Priority Price-Taking
- HBD** Hybrid
- BLK** Block
- CPL** Market Coupling Flow

Trade's Volume Mix

	Sell - MWh	Buy - MWh	
Lignite (0.0%)	0	0	(0.0%)
Crete Conv. (0.0%)	0	0	(0.0%)
Gas (3.6%)	90	0	(0.0%)
Hydro (0.0%)	0	0	(0.0%)
Imports (92.7%)	2,318		
RES (1.6%)	41	1,283	(51.3%)
Crete RES (0.0%)	0	0	(0.0%)
BESS (0.0%)	0	0	(0.0%)
HV Load (0.4%)	9	0	(0.0%)
MV Load (1.7%)	44	63	(2.5%)
LV Load (0.0%)	1	848	(33.9%)
Crete Load (0.0%)	0	0	(0.0%)
Pumping (0.0%)	0	0	(0.0%)
Exports		308	(12.3%)
Sys.Losses (0.0%)	0	0	(0.0%)
D/R Load (0.0%)	0	0	(0.0%)

