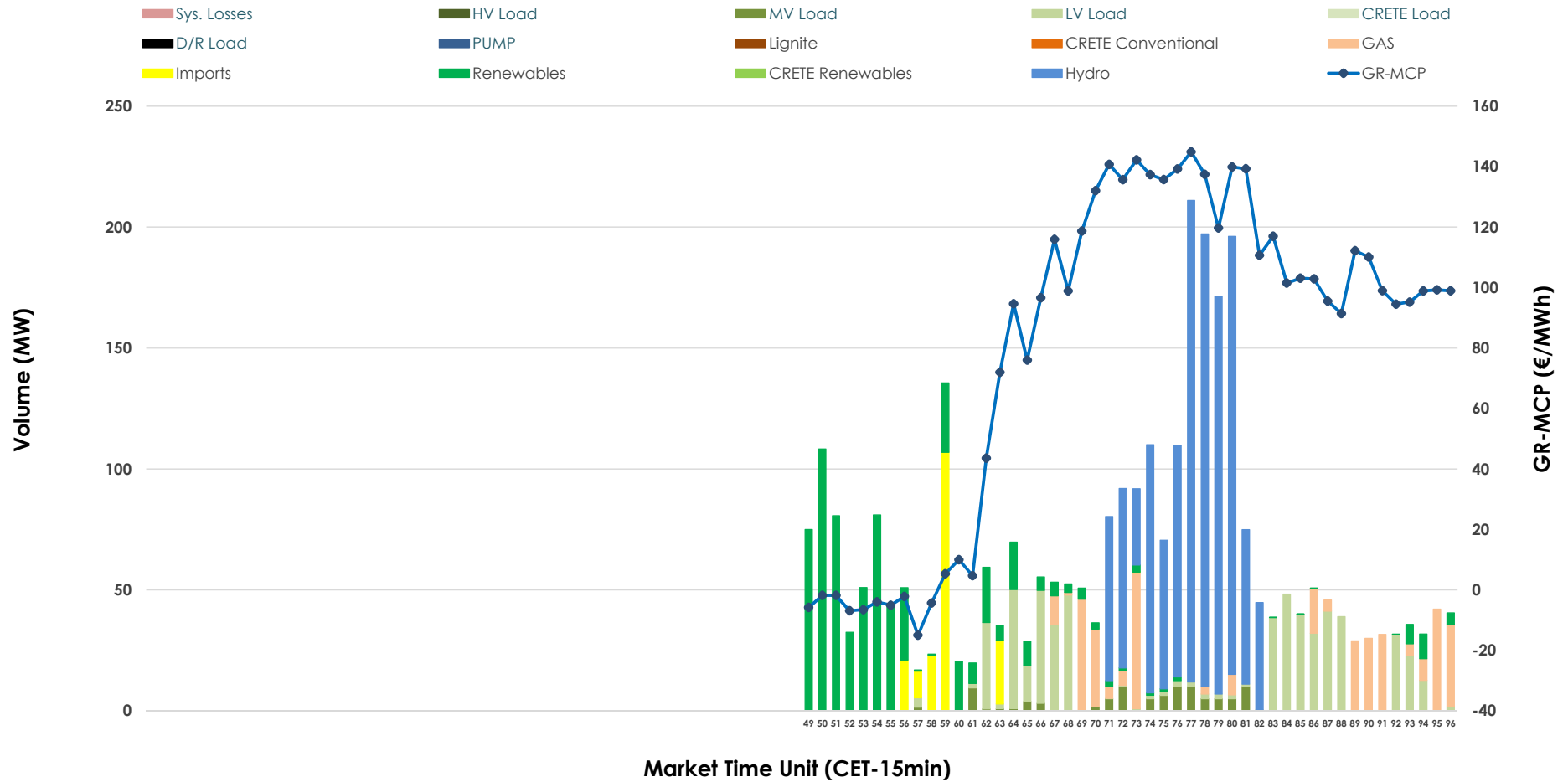


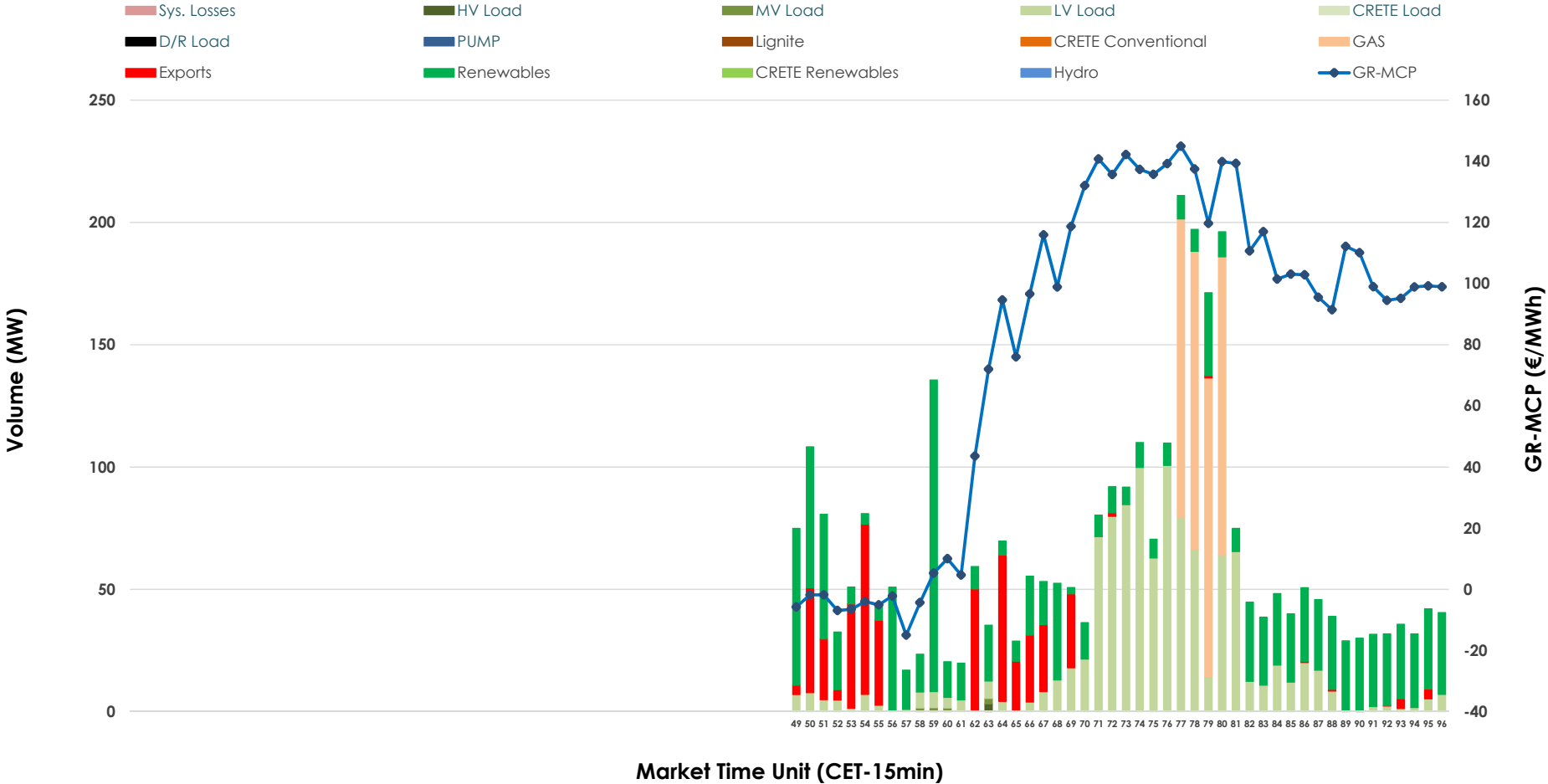


# IDA '3' Market Outlook

08.03.2026 IDA '3' Market - Sell



### 08.03.2026 IDA '3' Market - Buy



### GR Bidding Zone Weekly Figures

Delivery Day	02.03	03.03	04.03	05.03	06.03	07.03	08.03
	↑ 80%	↔ 7%	↓ -6%	↓ -14%	↓ -5%	↑ 11%	↓ -14%
<b>Avg.MCP (€/MWh)</b>	102.22	109.25	103.10	88.40	83.98	93.54	80.36
<b>Max.MCP (€/MWh)</b>	276.27	241.27	262.17	208.87	198.96	177.27	144.90
<b>Min.MCP (€/MWh)</b>	-22.29	-12.26	-6.13	-13.79	-35.00	-11.70	-14.97
	↔ 12%	↓ -49%	↔ 32%	↓ -14%	↑ 77%	↓ -32%	↔ -1%
<b>Tot.Vol(GWh)</b>	2.28	1.17	1.55	1.33	2.35	1.59	1.58

### Trades by Order Type

Delivery Day		02.03	03.03	04.03	05.03	06.03	07.03	08.03	
<b>Ord Price Type</b>		<b>Sell &amp; Buy Trades in (GWh) per Price Type</b>							<b>(%)</b>
<b>PPT</b>	(S)	0.000	0.000	0.000	0.000	0.000	0.000	0.000	0.00%
<b>HBD</b>	(S)	1.097	0.533	0.644	0.420	1.125	0.543	0.744	94.04%
<b>BLK</b>	(S)	0.000	0.000	0.000	0.000	0.000	0.000	0.000	0.00%
<b>CPL</b>	(S)	0.043	0.053	0.132	0.246	0.051	0.254	0.047	5.96%
<b>PPT</b>	(B)	0.000	0.000	0.000	0.000	0.000	0.000	0.000	0.00%
<b>HBD</b>	(B)	0.675	0.416	0.562	0.550	1.112	0.651	0.679	85.80%
<b>BLK</b>	(B)	0.000	0.000	0.000	0.000	0.000	0.000	0.000	0.00%
<b>CPL</b>	(B)	0.465	0.170	0.214	0.116	0.064	0.146	0.112	14.20%
		<b>Sell &amp; Buy Orders Traded per Price Type</b>							<b>(%)</b>
<b>PPT</b>	(S)	0	0	0	0	0	0	0	0.00%
<b>HBD</b>	(S)	186	93	126	131	162	96	107	100.00%
<b>BLK</b>	(S)	0	0	0	0	0	0	0	0.00%
<b>PPT</b>	(B)	0	0	0	0	0	0	0	0.00%
<b>HBD</b>	(B)	175	227	261	216	217	168	187	100.00%
<b>BLK</b>	(B)	0	0	0	0	0	0	0	0.00%

**MCP** Market Clearing Price (€/MWh)  
**PPT** Priority Price-Taking  
**HBD** Hybrid  
**BLK** Block  
**CPL** Market Coupling Flow

### Trade's Volume Mix

		Sell - MWh	Buy - MWh	
<b>Lignite</b>	(0.0%)	0	0	(0.0%)
<b>Crete Conv.</b>	(0.0%)	0	0	(0.0%)
<b>Gas</b>	(11.8%)	93	122	(15.4%)
<b>Hydro</b>	(40.2%)	318	0	(0.0%)
<b>Imports</b>	(6.0%)	47		
<b>RES</b>	(21.3%)	168	293	(37.0%)
<b>Crete RES</b>	(0.0%)	0	0	(0.0%)
<b>HV Load</b>	(0.0%)	0	1	(0.1%)
<b>MV Load</b>	(3.0%)	23	2	(0.2%)
<b>LV Load</b>	(17.8%)	140	261	(33.0%)
<b>Crete Load</b>	(0.0%)	0	0	(0.0%)
<b>Pumping</b>	(0.0%)	0	0	(0.0%)
<b>Exports</b>			112	(14.2%)
<b>Sys.Losses</b>	(0.0%)	0	0	(0.0%)
<b>D/R Load</b>	(0.0%)	0	0	(0.0%)

