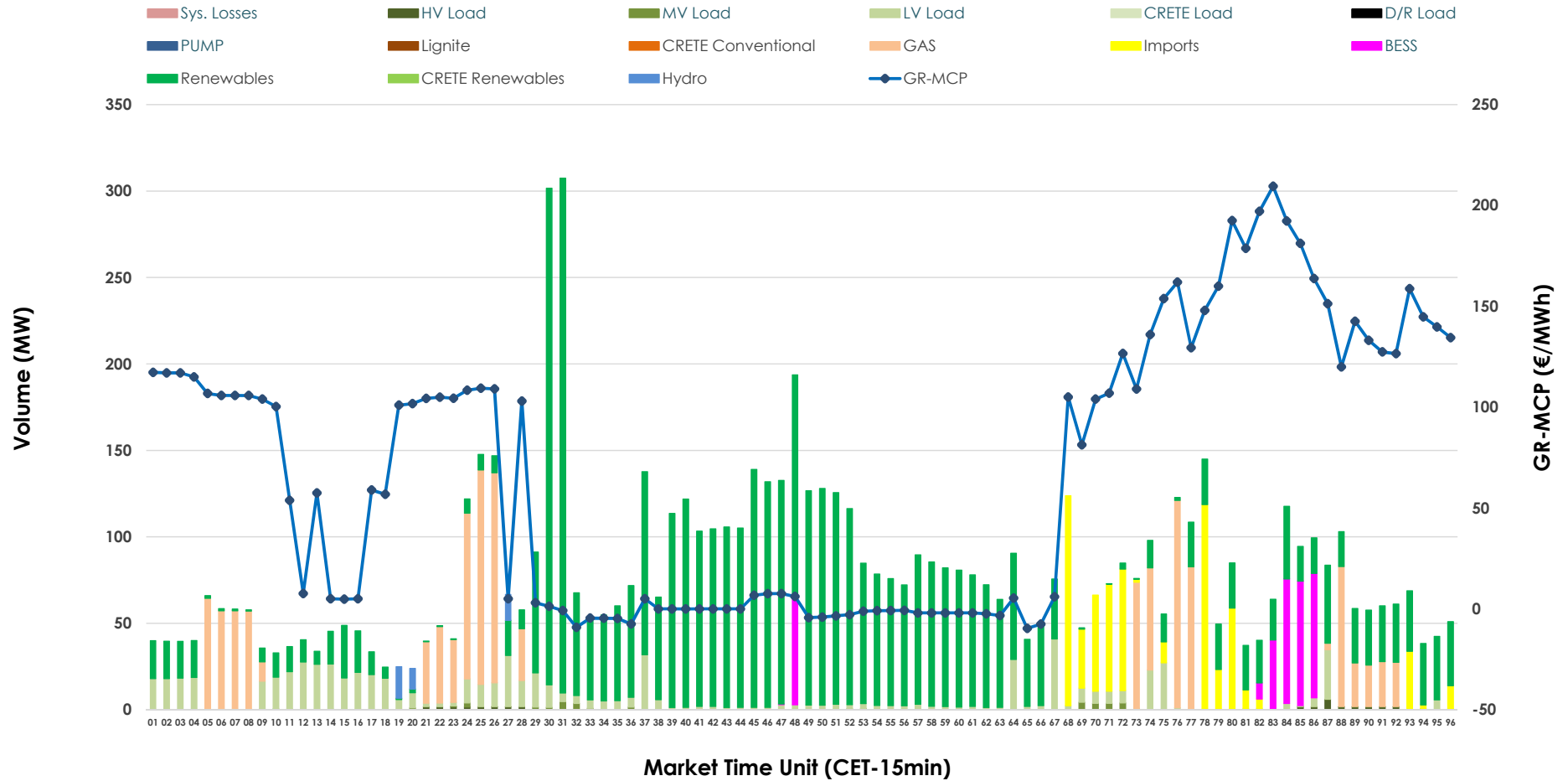


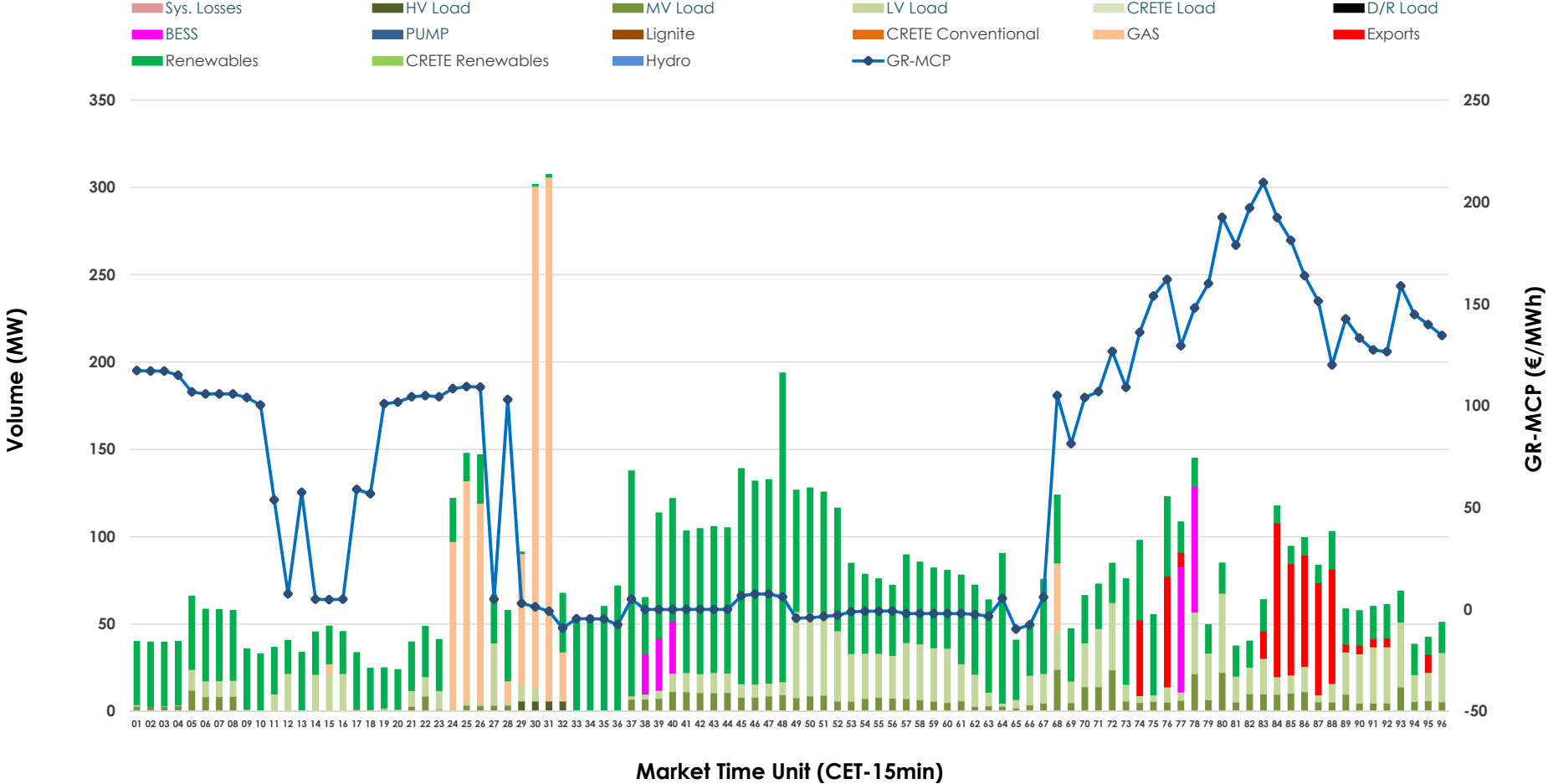


# IDA '1' Market Outlook

20.05.2026 IDA '1' Market - Sell



### 20.05.2026 IDA '1' Market - Buy



### GR Bidding Zone Weekly Figures

Delivery Day	14.05	15.05	16.05	17.05	18.05	19.05	20.05
	👇 -2%	👉 0%	👇 -14%	👇 -5%			👇 -48%
<b>Avg.MCP (€/MWh)</b>	91.29	91.30	78.20	73.99	N/M	130.04	67.48
<b>Max.MCP (€/MWh)</b>	234.22	178.58	130.66	168.63	N/M	248.28	209.51
<b>Min.MCP (€/MWh)</b>	-11.50	-4.99	-4.75	-4.52	N/M	72.72	-9.66
	👇 -25%	👇 -14%	👆 69%	👇 -9%			👆 17%
<b>Tot.Vol(GWh)</b>	2.83	2.44	4.12	3.74	N/M	3.33	3.89

### Trades by Order Type

Delivery Day		14.05	15.05	16.05	17.05	18.05	19.05	20.05	
<b>Ord Price Type</b>		<b>Sell &amp; Buy Trades in (GWh) per Price Type</b>							<b>(%)</b>
<b>PPT</b>	(S)	0.000	0.000	0.000	0.000		0.000	0.000	0.00%
<b>HBD</b>	(S)	1.325	1.004	1.800	1.492		0.966	1.790	92.00%
<b>BLK</b>	(S)	0.000	0.000	0.000	0.000		0.000	0.000	0.00%
<b>CPL</b>	(S)	0.091	0.217	0.262	0.379		0.697	0.156	8.00%
<b>PPT</b>	(B)	0.000	0.000	0.000	0.000		0.000	0.000	0.00%
<b>HBD</b>	(B)	1.306	1.081	1.025	1.845		1.537	1.820	93.51%
<b>BLK</b>	(B)	0.000	0.000	0.000	0.000		0.000	0.000	0.00%
<b>CPL</b>	(B)	0.110	0.140	1.037	0.027		0.126	0.126	6.49%
		<b>Sell &amp; Buy Orders Traded per Price Type</b>							<b>(%)</b>
<b>PPT</b>	(S)	0	0	0	0		0	0	0.00%
<b>HBD</b>	(S)	201	260	224	227		393	388	100.00%
<b>BLK</b>	(S)	0	0	0	0		0	0	0.00%
<b>PPT</b>	(B)	0	0	0	0		0	0	0.00%
<b>HBD</b>	(B)	649	818	663	679		796	684	100.00%
<b>BLK</b>	(B)	0	0	0	0		0	0	0.00%

- MCP** Market Clearing Price (€/MWh)
- PPT** Priority Price-Taking
- HBD** Hybrid
- BLK** Block
- CPL** Market Coupling Flow

### Trade's Volume Mix

	Sell - MWh	Buy - MWh	
<b>Lignite</b> (0.0%)	0	0	(0.0%)
<b>Crete Conv.</b> (0.0%)	0	0	(0.0%)
<b>Gas</b> (16.1%)	314	271	(13.9%)
<b>Hydro</b> (0.6%)	11	0	(0.0%)
<b>Imports</b> (8.0%)	156		
<b>RES</b> (60.5%)	1,178	987	(50.7%)
<b>Crete RES</b> (0.0%)	0	0	(0.0%)
<b>BESS</b> (4.2%)	82	57	(2.9%)
<b>HV Load</b> (0.4%)	7	6	(0.3%)
<b>MV Load</b> (0.7%)	14	148	(7.6%)
<b>LV Load</b> (9.5%)	184	351	(18.1%)
<b>Crete Load</b> (0.0%)	0	0	(0.0%)
<b>Pumping</b> (0.0%)	0	0	(0.0%)
<b>Exports</b>		126	(6.5%)
<b>Sys.Losses</b> (0.0%)	0	0	(0.0%)
<b>D/R Load</b> (0.0%)	0	0	(0.0%)

