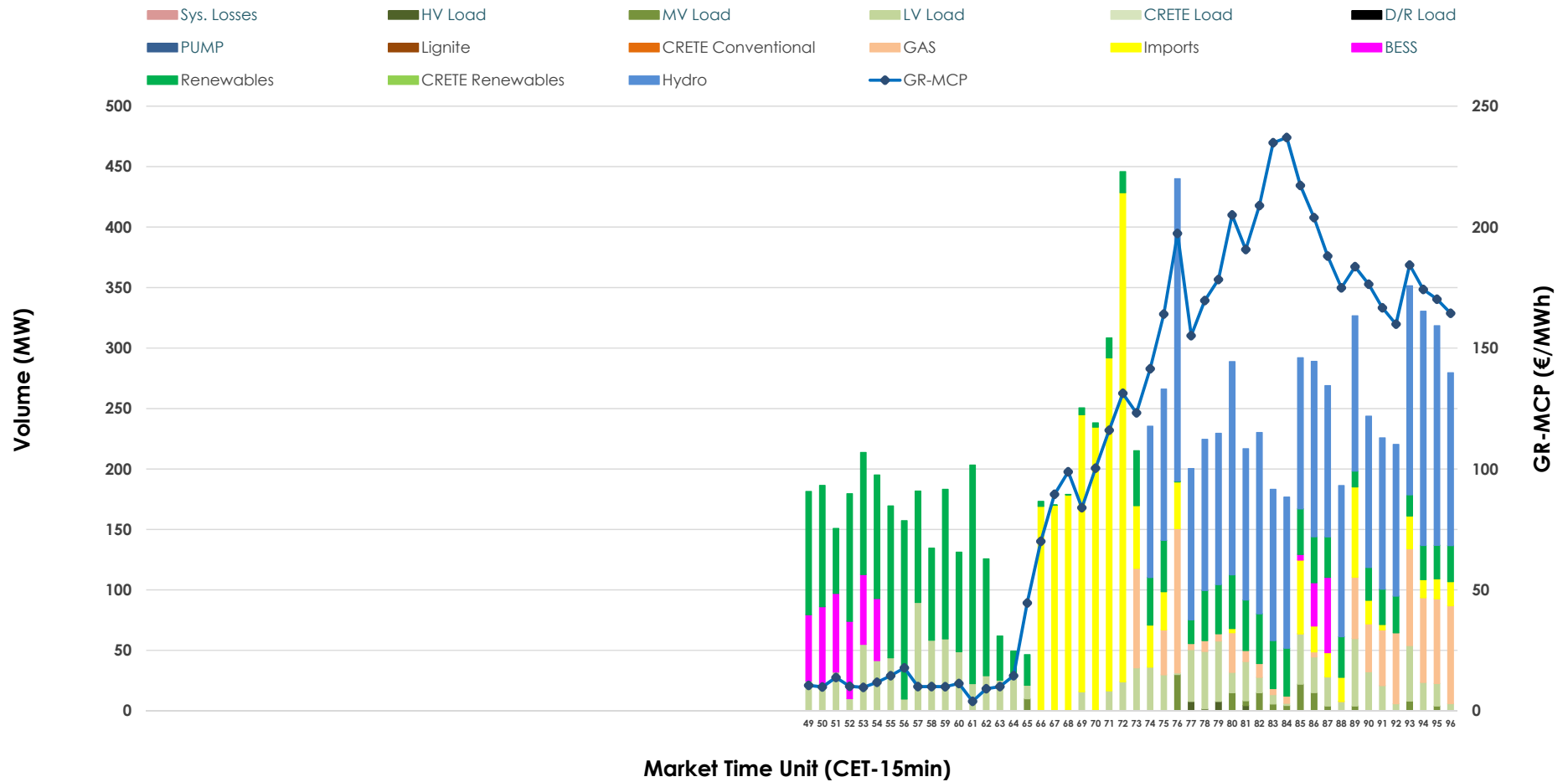


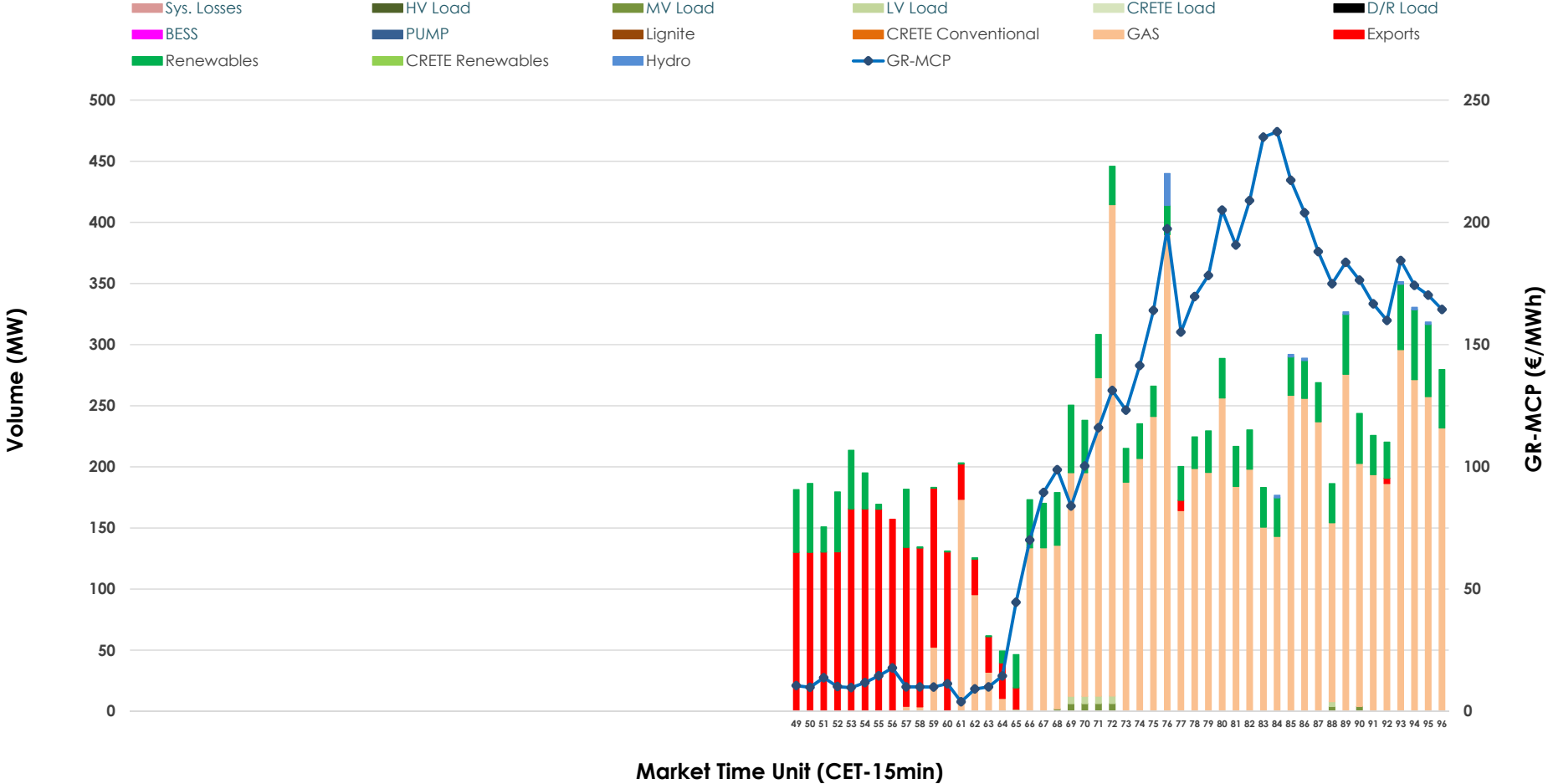


# IDA '3' Market Outlook

21.05.2026 IDA '3' Market - Sell



### 21.05.2026 IDA '3' Market - Buy



### GR Bidding Zone Weekly Figures

Delivery Day	15.05	16.05	17.05	18.05	19.05	20.05	21.05
	👇 -8%	👇 -18%	👆 3%	👆 63%	👆 12%	👇 -36%	👆 32%
<b>Avg.MCP (€/MWh)</b>	84.49	69.38	71.12	115.83	129.53	83.15	110.01
<b>Max.MCP (€/MWh)</b>	153.65	132.56	146.50	272.82	216.80	196.97	237.02
<b>Min.MCP (€/MWh)</b>	0.01	1.52	-15.83	-5.23	63.92	-4.78	3.90
	👆 49%	👇 -7%	👇 -48%	👆 96%	👆 26%	👇 -37%	👆 196%
<b>Tot.Vol(GWh)</b>	2.34	2.18	1.14	2.23	2.81	1.78	5.28

### Trades by Order Type

Delivery Day		15.05	16.05	17.05	18.05	19.05	20.05	21.05	
<b>Ord Price Type</b>		<b>Sell &amp; Buy Trades in (GWh) per Price Type</b>							<b>(%)</b>
<b>PPT</b>	(S)	0.000	0.000	0.000	0.000	0.000	0.000	0.000	0.00%
<b>HBD</b>	(S)	0.806	1.089	0.304	0.670	0.893	0.836	2.108	79.91%
<b>BLK</b>	(S)	0.000	0.000	0.000	0.000	0.000	0.000	0.000	0.00%
<b>CPL</b>	(S)	0.364	0.000	0.266	0.446	0.511	0.055	0.530	20.09%
<b>PPT</b>	(B)	0.000	0.000	0.000	0.000	0.000	0.000	0.000	0.00%
<b>HBD</b>	(B)	1.144	0.603	0.446	1.071	1.185	0.635	2.179	82.59%
<b>BLK</b>	(B)	0.000	0.000	0.000	0.000	0.000	0.000	0.000	0.00%
<b>CPL</b>	(B)	0.025	0.486	0.124	0.046	0.219	0.256	0.459	17.41%
		<b>Sell &amp; Buy Orders Traded per Price Type</b>							<b>(%)</b>
<b>PPT</b>	(S)	0	0	0	0	0	0	0	0.00%
<b>HBD</b>	(S)	112	220	81	183	126	233	292	100.00%
<b>BLK</b>	(S)	0	0	0	0	0	0	0	0.00%
<b>PPT</b>	(B)	0	0	0	0	0	0	0	0.00%
<b>HBD</b>	(B)	246	129	163	307	388	163	194	100.00%
<b>BLK</b>	(B)	0	0	0	0	0	0	0	0.00%

- MCP** Market Clearing Price (€/MWh)
- PPT** Priority Price-Taking
- HBD** Hybrid
- BLK** Block
- CPL** Market Coupling Flow

### Trade's Volume Mix

		Sell - MWh	Buy - MWh	
<b>Lignite</b>	(0.0%)	0	0	(0.0%)
<b>Crete Conv.</b>	(0.0%)	0	0	(0.0%)
<b>Gas</b>	(7.8%)	206	1,781	(67.5%)
<b>Hydro</b>	(31.2%)	823	10	(0.4%)
<b>Imports</b>	(20.1%)	530		
<b>RES</b>	(22.7%)	600	369	(14.0%)
<b>Crete RES</b>	(0.0%)	0	0	(0.0%)
<b>BESS</b>	(4.4%)	116	0	(0.0%)
<b>HV Load</b>	(0.2%)	5	0	(0.0%)
<b>MV Load</b>	(1.3%)	35	9	(0.3%)
<b>LV Load</b>	(12.3%)	324	9	(0.4%)
<b>Crete Load</b>	(0.0%)	0	0	(0.0%)
<b>Pumping</b>	(0.0%)	0	0	(0.0%)
<b>Exports</b>			459	(17.4%)
<b>Sys.Losses</b>	(0.0%)	0	0	(0.0%)
<b>D/R Load</b>	(0.0%)	0	0	(0.0%)

