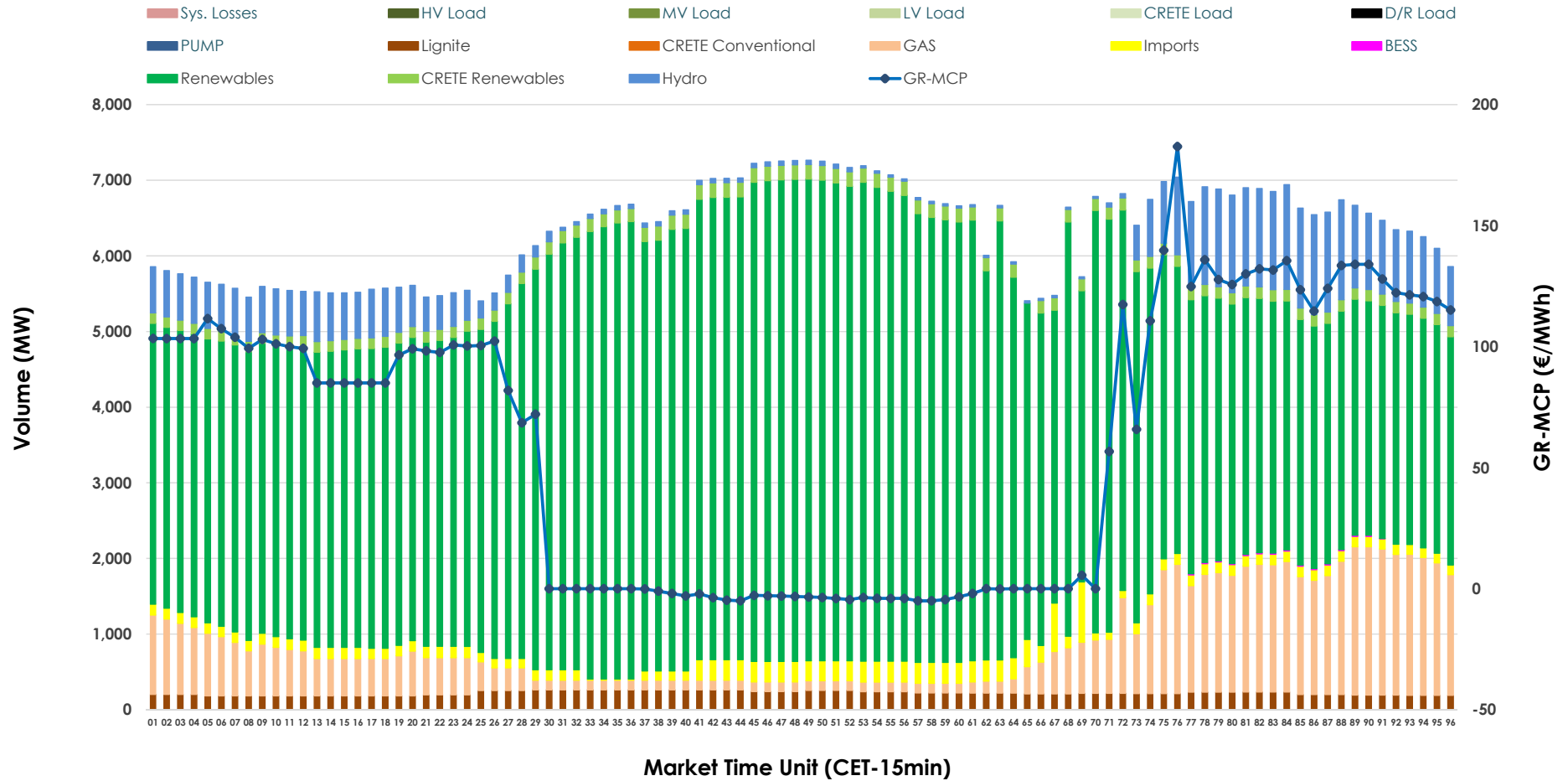


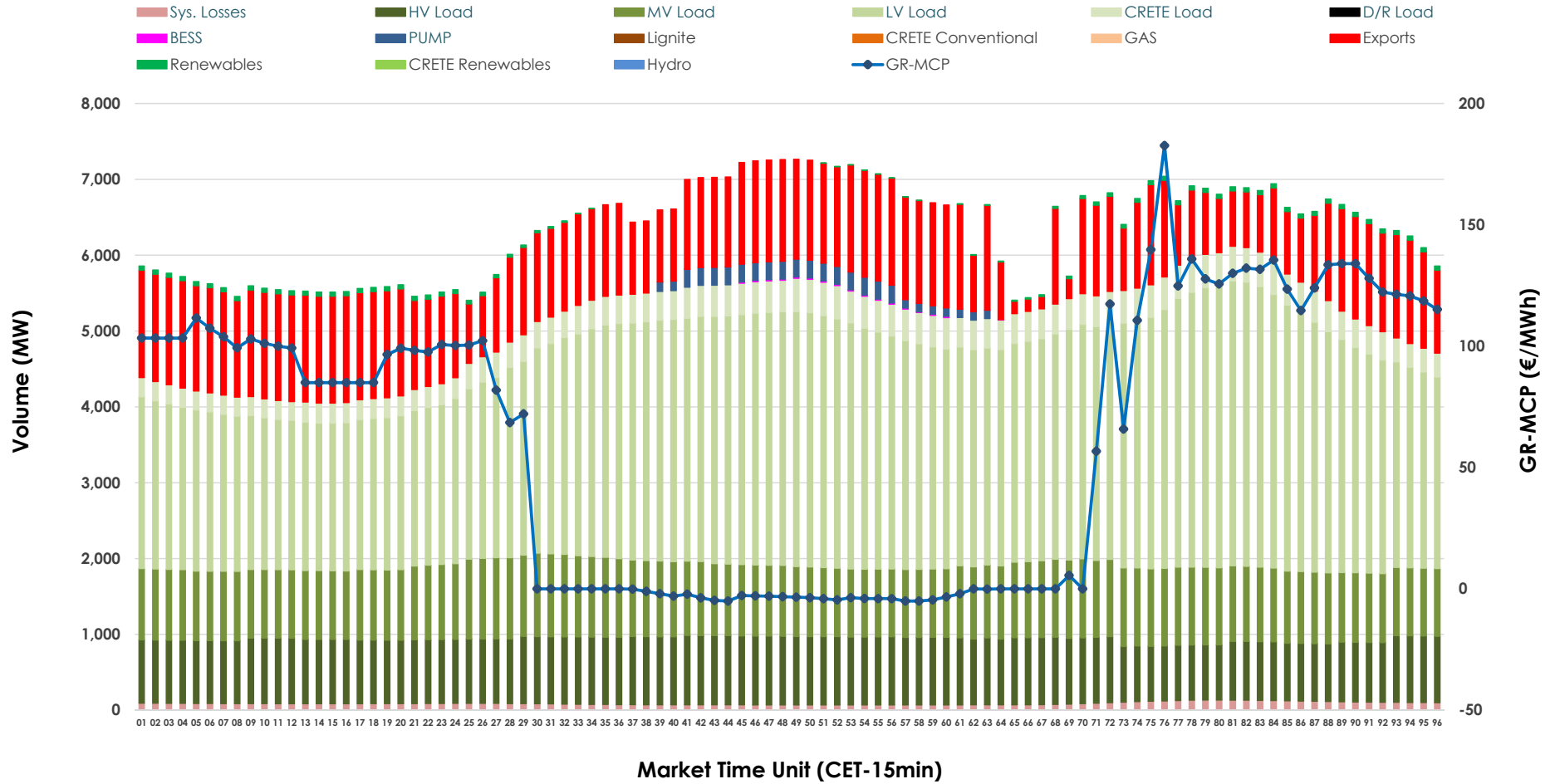


# Day-Ahead Market Outlook

02.05.2026 Day-Ahead Market - Sell



## 02.05.2026 Day-Ahead Market - Buy



### GR Bidding Zone Weekly Figures

Delivery Day	26.04	27.04	28.04	29.04	30.04	01.05	02.05
	👇 -12%	👆 64%	👇 -5%	👆 28%	👇 -11%	👇 -37%	👆 13%
<b>Avg.MCP (€/MWh)</b>	48.85	80.06	75.66	97.01	86.43	54.50	61.40
<b>Max.MCP (€/MWh)</b>	137.70	221.32	195.51	223.89	213.40	120.80	182.68
<b>Min.MCP (€/MWh)</b>	-50.00	-2.01	-2.50	-0.01	0.01	0.00	-5.00
	👇 -10%	👆 20%	👆 2%	👆 0%	👇 -2%	👆 5%	👆 4%
<b>Tot.Vol(GWh)</b>	232.86	278.90	285.73	285.20	280.87	294.18	304.64

### Trades by Order Type

Delivery Day		26.04	27.04	28.04	29.04	30.04	01.05	02.05	
<b>Ord Price Type</b>		<b>Sell &amp; Buy Trades in (GWh) per Price Type</b>							<b>(%)</b>
<b>PPT</b>	(S)	48.107	58.220	56.503	50.135	49.397	70.948	77.082	50.61%
<b>HBD</b>	(S)	34.796	58.208	56.663	60.517	60.205	66.512	65.566	43.04%
<b>BLK</b>	(S)	15.757	22.261	29.032	31.075	23.319	9.630	9.306	6.11%
<b>CPL</b>	(S)	17.768	0.761	0.665	0.873	7.514	0.000	0.367	0.24%
<b>PPT</b>	(B)	12.240	13.139	12.556	12.132	12.191	13.282	14.496	9.52%
<b>HBD</b>	(B)	102.435	115.820	118.971	121.569	121.751	114.864	118.407	77.74%
<b>BLK</b>	(B)	0.000	0.000	0.000	0.000	0.000	0.000	0.000	0.00%
<b>CPL</b>	(B)	1.752	10.491	11.337	8.899	6.492	18.943	19.418	12.75%
		<b>Sell &amp; Buy Orders Traded per Price Type</b>							<b>(%)</b>
<b>PPT</b>	(S)	1592	1641	1657	1691	1674	1559	1484	36.47%
<b>HBD</b>	(S)	2302	2690	2787	3191	3352	2875	2577	63.33%
<b>BLK</b>	(S)	6	11	13	15	9	9	8	0.20%
<b>PPT</b>	(B)	2258	2307	2293	2311	2265	2294	2263	36.77%
<b>HBD</b>	(B)	3997	3817	4129	4038	4187	4191	3891	63.23%
<b>BLK</b>	(B)	0	0	0	0	0	0	0	0.00%

- MCP** Market Clearing Price (€/MWh)
- PPT** Priority Price-Taking
- HBD** Hybrid
- BLK** Block
- CPL** Market Coupling Flow

### Trade's Volume Mix

		Sell - MWh	Buy - MWh	
<b>Lignite</b>	(3.5%)	5,301	0	(0.0%)
<b>Crete Conv.</b>	(0.0%)	0	0	(0.0%)
<b>Gas</b>	(10.8%)	16,508	0	(0.0%)
<b>Hydro</b>	(7.1%)	10,807	0	(0.0%)
<b>Imports</b>	(2.8%)	4,334		
<b>RES</b>	(73.2%)	111,495	783	(0.5%)
<b>Crete RES</b>	(2.5%)	3,821	0	(0.0%)
<b>BESS</b>	(0.0%)	55	66	(0.0%)
<b>HV Load</b>	(0.0%)	0	20,374	(13.4%)
<b>MV Load</b>	(0.0%)	0	23,186	(15.2%)
<b>LV Load</b>	(0.0%)	0	68,019	(44.7%)
<b>Crete Load</b>	(0.0%)	0	8,710	(5.7%)
<b>Pumping</b>	(0.0%)	0	1,195	(0.8%)
<b>Exports</b>			27,844	(18.3%)
<b>Sys.Losses</b>	(0.0%)	0	2,144	(1.4%)
<b>D/R Load</b>	(0.0%)	0	0	(0.0%)

