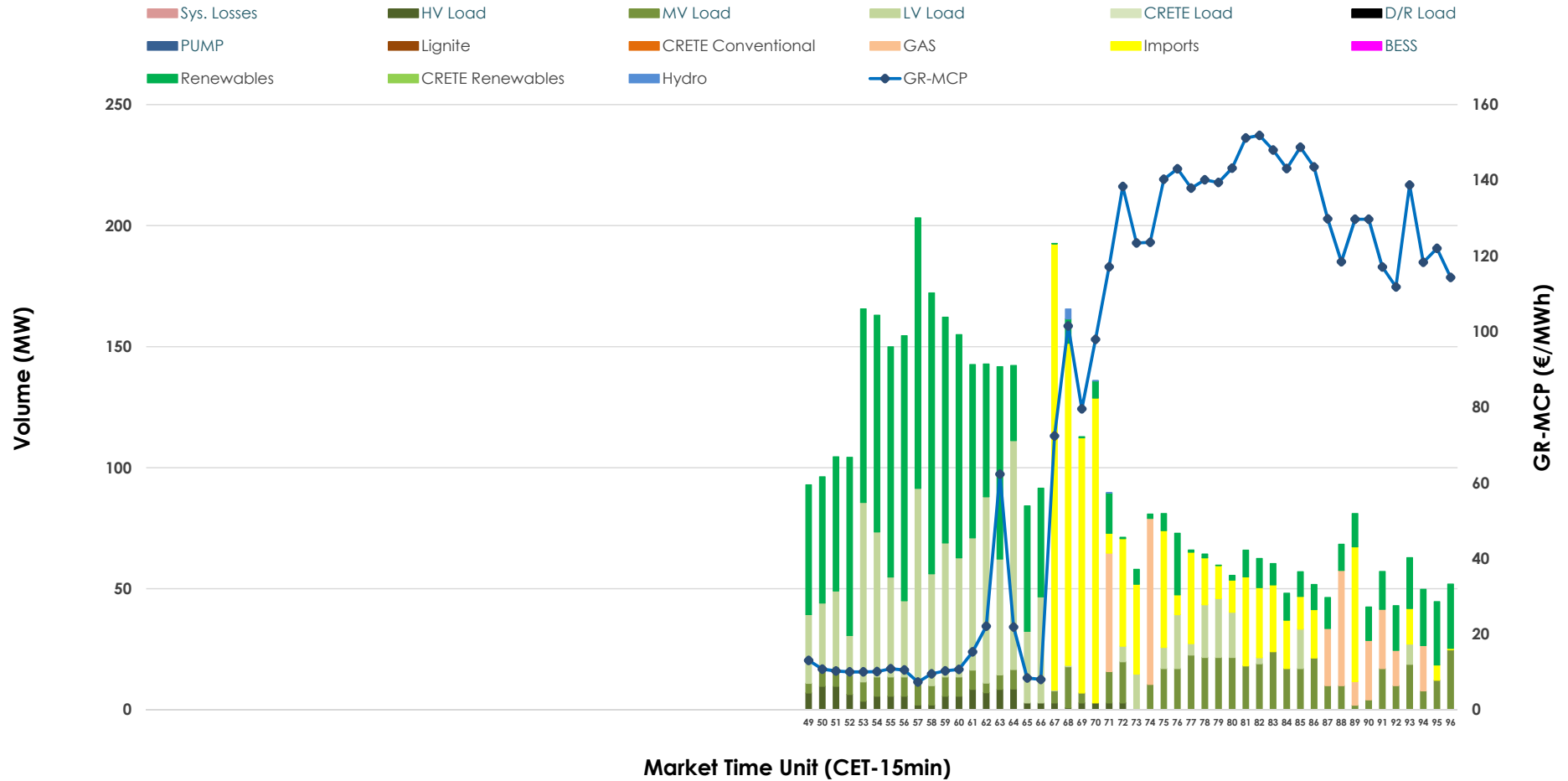


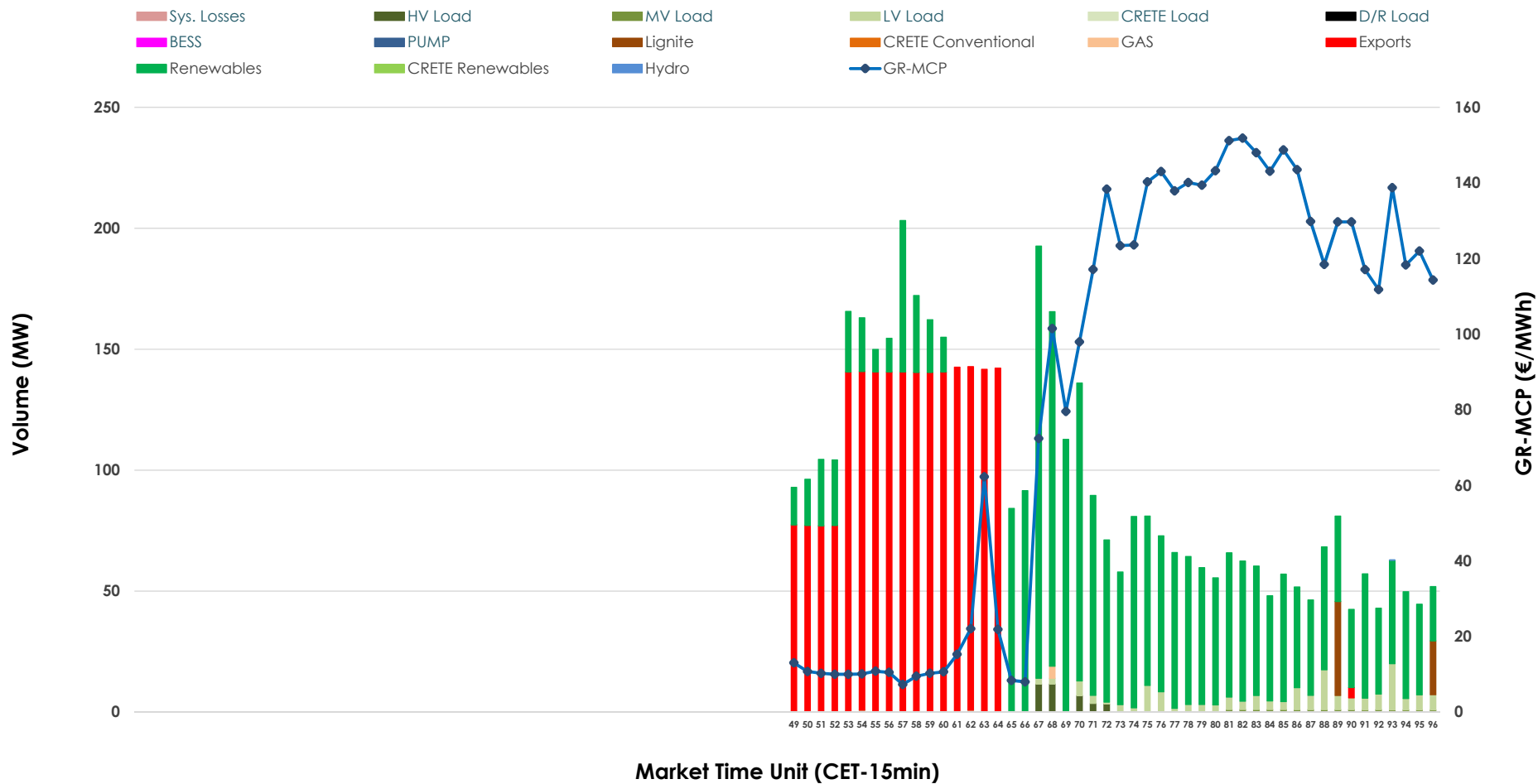


# IDA '3' Market Outlook

03.06.2026 IDA '3' Market - Sell



### 03.06.2026 IDA '3' Market - Buy



### GR Bidding Zone Weekly Figures

Delivery Day	28.05	29.05	30.05	31.05	01.06	02.06	03.06
	👇 -23%	👇 -18%	👉 4%	👉 32%	👉 16%	👇 -14%	👇 -12%
<b>Avg.MCP (€/MWh)</b>	86.25	70.87	73.90	97.75	113.15	96.79	84.90
<b>Max.MCP (€/MWh)</b>	205.07	152.55	168.60	171.99	245.99	171.85	151.86
<b>Min.MCP (€/MWh)</b>	-6.67	-16.74	-8.00	19.99	15.00	1.83	7.31
	👆 48%	👇 -39%	👉 8%	👆 146%	👇 -36%	👇 -32%	👉 21%
<b>Tot.Vol(GWh)</b>	2.77	1.69	1.82	4.47	2.86	1.93	2.33

### Trades by Order Type

Delivery Day		28.05	29.05	30.05	31.05	01.06	02.06	03.06	
<b>Ord Price Type</b>		<b>Sell &amp; Buy Trades in (GWh) per Price Type</b>							<b>(%)</b>
<b>PPT</b>	(S)	0.000	0.000	0.000	0.000	0.000	0.000	0.000	0.00%
<b>HBD</b>	(S)	0.934	0.847	0.825	0.705	1.017	0.682	0.916	78.49%
<b>BLK</b>	(S)	0.000	0.000	0.000	0.000	0.000	0.000	0.000	0.00%
<b>CPL</b>	(S)	0.449	0.000	0.086	1.532	0.412	0.284	0.251	21.51%
<b>PPT</b>	(B)	0.000	0.000	0.000	0.000	0.000	0.000	0.000	0.00%
<b>HBD</b>	(B)	1.365	0.322	0.557	1.909	0.942	0.786	0.667	57.14%
<b>BLK</b>	(B)	0.000	0.000	0.000	0.000	0.000	0.000	0.000	0.00%
<b>CPL</b>	(B)	0.018	0.526	0.354	0.328	0.488	0.180	0.500	42.86%
		<b>Sell &amp; Buy Orders Traded per Price Type</b>							<b>(%)</b>
<b>PPT</b>	(S)	0	0	0	0	0	0	0	0.00%
<b>HBD</b>	(S)	144	167	109	177	168	189	244	100.00%
<b>BLK</b>	(S)	0	0	0	0	0	0	0	0.00%
<b>PPT</b>	(B)	0	0	0	0	0	0	0	0.00%
<b>HBD</b>	(B)	308	203	212	164	184	277	260	100.00%
<b>BLK</b>	(B)	0	0	0	0	0	0	0	0.00%

- MCP** Market Clearing Price (€/MWh)
- PPT** Priority Price-Taking
- HBD** Hybrid
- BLK** Block
- CPL** Market Coupling Flow

### Trade's Volume Mix

	Sell - MWh	Buy - MWh	
<b>Lignite</b> (0.0%)	0	15	(1.3%)
<b>Crete Conv.</b> (0.0%)	0	0	(0.0%)
<b>Gas</b> (6.0%)	70	1	(0.1%)
<b>Hydro</b> (0.1%)	1	0	(0.0%)
<b>Imports</b> (21.5%)	251		
<b>RES</b> (36.0%)	420	595	(51.0%)
<b>Crete RES</b> (0.0%)	0	0	(0.0%)
<b>BESS</b> (0.0%)	0	0	(0.0%)
<b>HV Load</b> (2.6%)	30	9	(0.8%)
<b>MV Load</b> (11.6%)	135	4	(0.3%)
<b>LV Load</b> (22.2%)	259	42	(3.6%)
<b>Crete Load</b> (0.0%)	0	0	(0.0%)
<b>Pumping</b> (0.0%)	0	0	(0.0%)
<b>Exports</b>		500	(42.9%)
<b>Sys.Losses</b> (0.0%)	0	0	(0.0%)
<b>D/R Load</b> (0.0%)	0	0	(0.0%)

