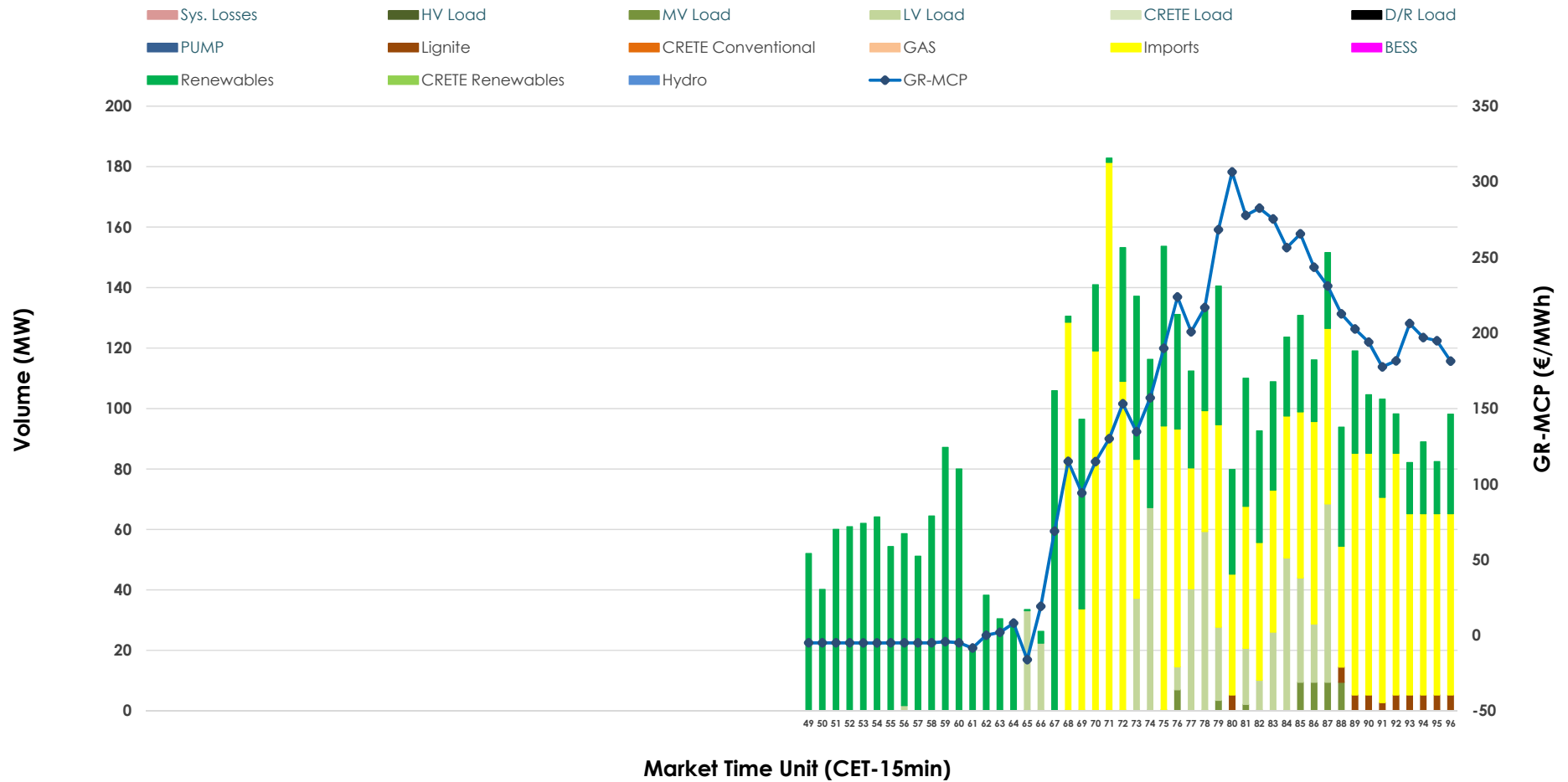


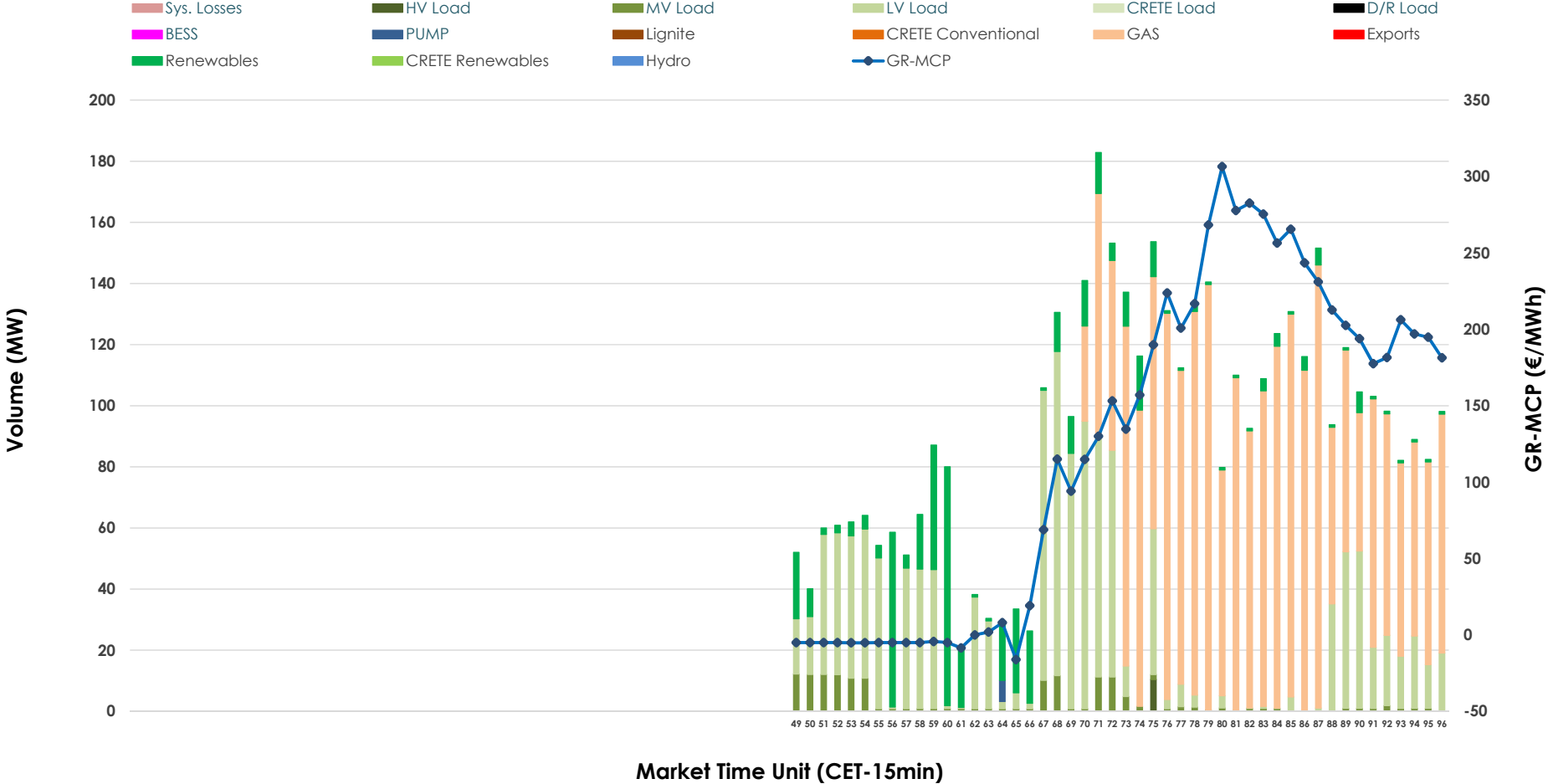


IDA '3' Market Outlook

04.05.2026 IDA '3' Market - Sell



04.05.2026 IDA '3' Market - Buy



GR Bidding Zone Weekly Figures

Delivery Day	28.04	29.04	30.04	01.05	02.05	03.05	04.05
	↗ 4%	↕ 50%	↘ -26%	↘ -28%	↗ 22%	↘ -1%	↕ 80%
Avg.MCP (€/MWh)	70.09	105.43	78.43	56.53	68.99	68.12	122.88
Max.MCP (€/MWh)	157.70	233.89	193.40	184.92	172.68	167.98	306.49
Min.MCP (€/MWh)	-19.62	-4.58	0.39	-12.84	-56.03	-16.76	-16.16
	↘ -13%	↕ 92%	↘ -44%	↘ -13%	↕ 62%	↘ 0%	↘ -8%
Tot.Vol(GWh)	1.58	3.03	1.70	1.49	2.41	2.40	2.21

Trades by Order Type

Delivery Day		28.04	29.04	30.04	01.05	02.05	03.05	04.05	
Ord Price Type		Sell & Buy Trades in (GWh) per Price Type							(%)
PPT	(S)	0.000	0.000	0.000	0.000	0.000	0.000	0.000	0.00%
HBD	(S)	0.490	0.910	0.841	0.744	0.889	1.114	0.625	56.41%
BLK	(S)	0.000	0.000	0.000	0.000	0.000	0.000	0.000	0.00%
CPL	(S)	0.298	0.607	0.011	0.000	0.313	0.086	0.483	43.59%
PPT	(B)	0.000	0.000	0.000	0.000	0.000	0.000	0.000	0.00%
HBD	(B)	0.633	1.492	0.434	0.256	0.941	0.667	1.107	100.00%
BLK	(B)	0.000	0.000	0.000	0.000	0.000	0.000	0.000	0.00%
CPL	(B)	0.155	0.025	0.418	0.488	0.261	0.534	0.000	0.00%
		Sell & Buy Orders Traded per Price Type							(%)
PPT	(S)	0	0	0	0	0	0	0	0.00%
HBD	(S)	105	230	233	183	166	149	192	100.00%
BLK	(S)	0	0	0	0	0	0	0	0.00%
PPT	(B)	0	0	0	0	0	0	0	0.00%
HBD	(B)	247	178	124	88	157	94	179	100.00%
BLK	(B)	0	0	0	0	0	0	0	0.00%

- MCP** Market Clearing Price (€/MWh)
- PPT** Priority Price-Taking
- HBD** Hybrid
- BLK** Block
- CPL** Market Coupling Flow

Trade's Volume Mix

	Sell - MWh	Buy - MWh	
Lignite (1.1%)	12	0	(0.0%)
Crete Conv. (0.0%)	0	0	(0.0%)
Gas (0.0%)	0	607	(54.8%)
Hydro (0.0%)	0	0	(0.0%)
Imports (43.6%)	483		
RES (42.6%)	471	119	(10.7%)
Crete RES (0.0%)	0	0	(0.0%)
BESS (0.0%)	0	0	(0.0%)
HV Load (0.0%)	0	3	(0.2%)
MV Load (1.3%)	14	38	(3.4%)
LV Load (11.5%)	127	339	(30.6%)
Crete Load (0.0%)	0	0	(0.0%)
Pumping (0.0%)	0	2	(0.2%)
Exports		0	(0.0%)
Sys.Losses (0.0%)	0	0	(0.0%)
D/R Load (0.0%)	0	0	(0.0%)

