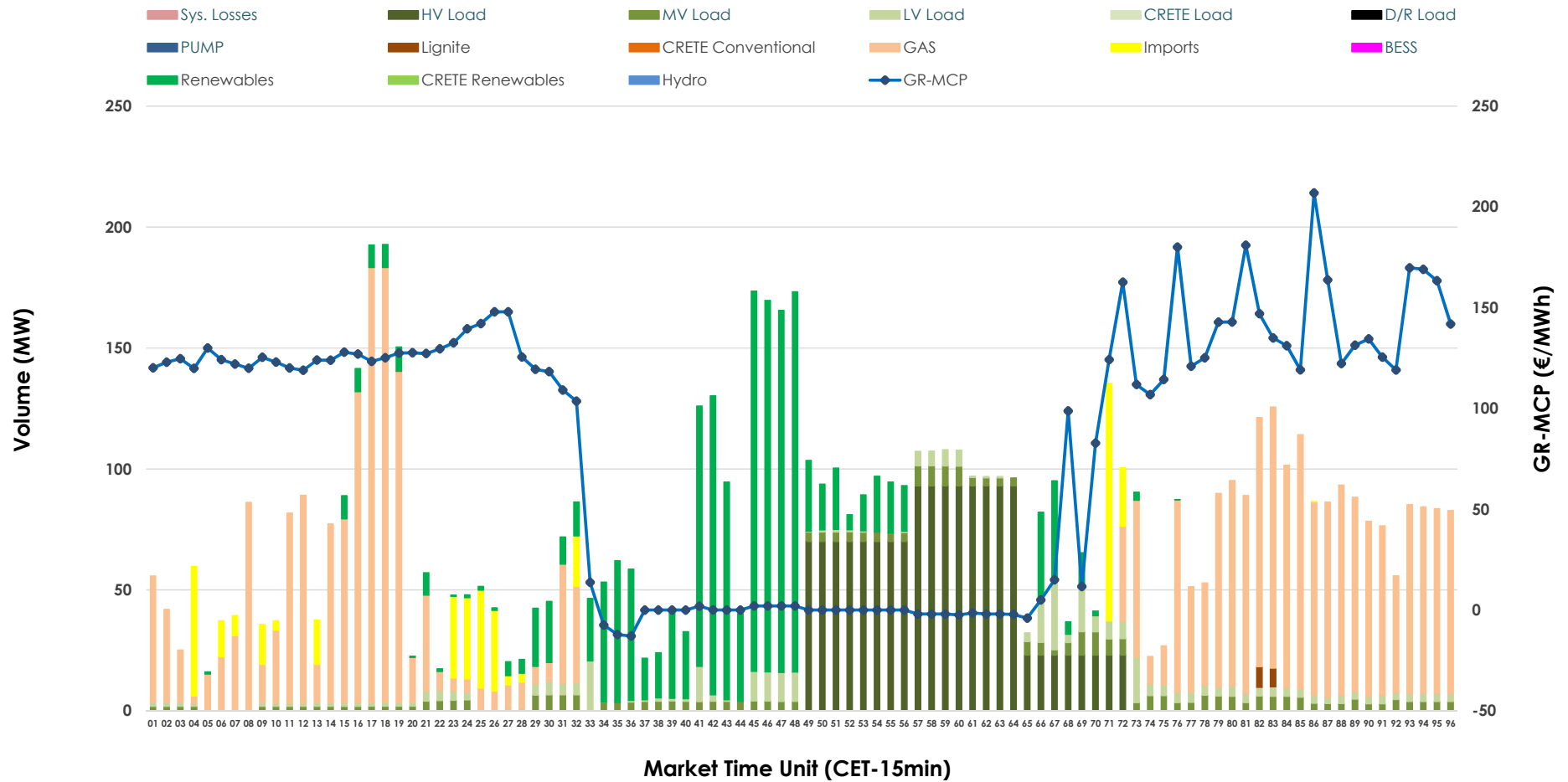


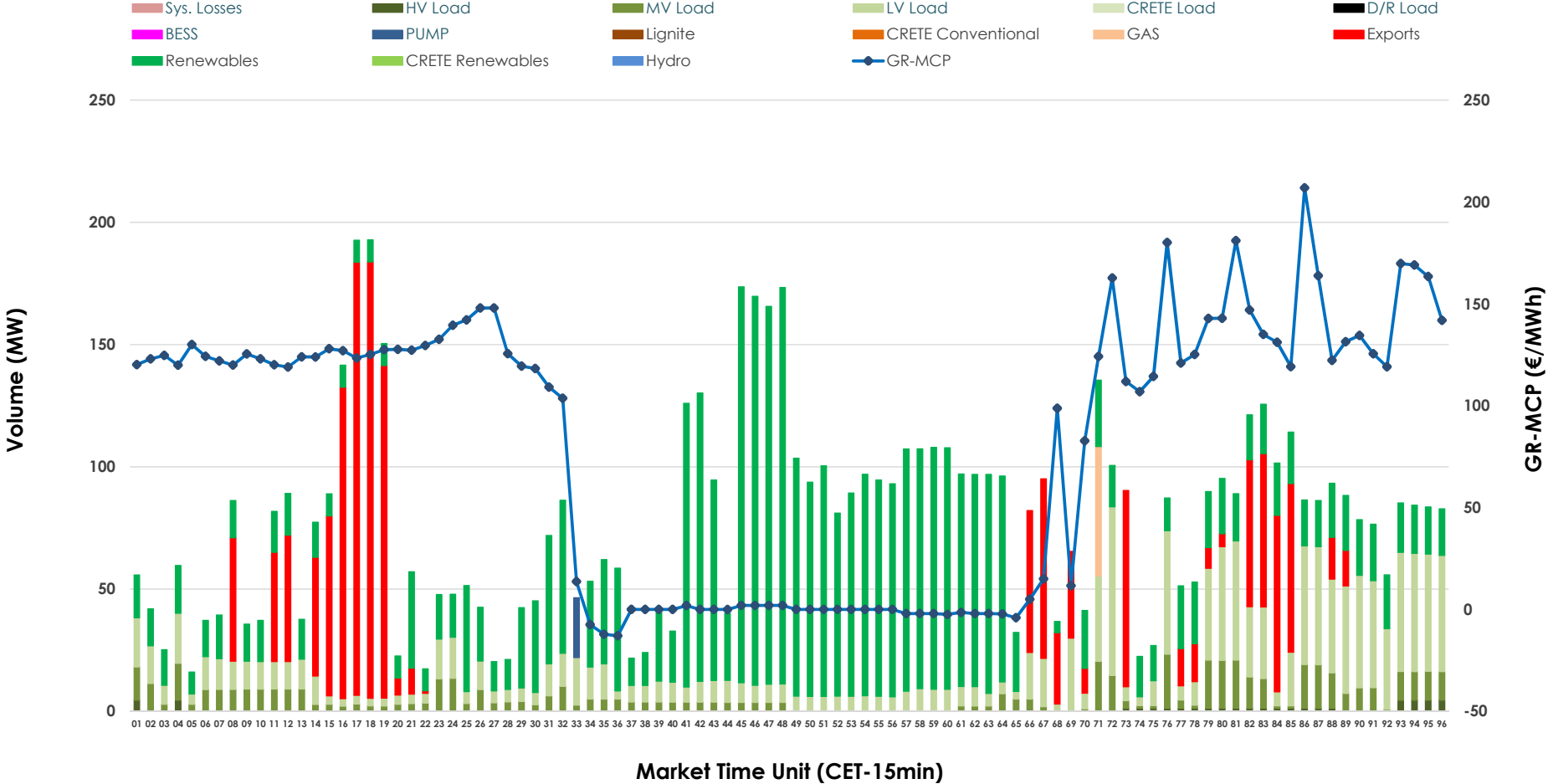


IDA '1' Market Outlook

26.05.2026 IDA '1' Market - Sell



26.05.2026 IDA '1' Market - Buy



GR Bidding Zone Weekly Figures

Delivery Day	20.05	21.05	22.05	23.05	24.05	25.05	26.05
	↓ -48%	↔ 26%	↔ 7%	↓ -20%	↔ -17%	↔ 19%	↔ 14%
Avg.MCP (€/MWh)	67.48	85.17	91.40	73.10	60.85	72.34	82.27
Max.MCP (€/MWh)	209.51	224.45	165.99	185.18	164.90	173.66	206.92
Min.MCP (€/MWh)	-9.66	-16.86	-6.39	-3.17	-11.00	-7.44	-12.94
	↔ 17%	↔ -1%	↑ 40%	↓ -12%	↔ 3%	↓ -41%	↔ 32%
Tot.Vol(GWh)	3.89	3.87	5.40	4.77	4.92	2.89	3.80

Trades by Order Type

Delivery Day		20.05	21.05	22.05	23.05	24.05	25.05	26.05	
Ord Price Type		Sell & Buy Trades in (GWh) per Price Type							(%)
PPT	(S)	0.000	0.000	0.000	0.000	0.000	0.000	0.000	0.00%
HBD	(S)	1.790	1.934	2.290	1.726	1.618	1.386	1.798	94.63%
BLK	(S)	0.000	0.000	0.000	0.000	0.000	0.000	0.000	0.00%
CPL	(S)	0.156	0.000	0.412	0.660	0.844	0.058	0.102	5.37%
PPT	(B)	0.000	0.000	0.000	0.000	0.000	0.000	0.000	0.00%
HBD	(B)	1.820	1.934	1.613	2.280	2.313	1.024	1.517	79.83%
BLK	(B)	0.000	0.000	0.000	0.000	0.000	0.000	0.000	0.00%
CPL	(B)	0.126	0.000	1.089	0.106	0.149	0.420	0.383	20.17%
		Sell & Buy Orders Traded per Price Type							(%)
PPT	(S)	0	0	0	0	0	0	0	0.00%
HBD	(S)	388	224	290	415	378	196	349	100.00%
BLK	(S)	0	0	0	0	0	0	0	0.00%
PPT	(B)	0	0	0	0	0	0	0	0.00%
HBD	(B)	684	783	639	784	672	448	647	100.00%
BLK	(B)	0	0	0	0	0	0	0	0.00%

- MCP** Market Clearing Price (€/MWh)
- PPT** Priority Price-Taking
- HBD** Hybrid
- BLK** Block
- CPL** Market Coupling Flow

Trade's Volume Mix

	Sell - MWh	Buy - MWh	
Lignite (0.2%)	4	0	(0.0%)
Crete Conv. (0.0%)	0	0	(0.0%)
Gas (43.1%)	818	13	(0.7%)
Hydro (0.0%)	0	0	(0.0%)
Imports (5.4%)	102		
RES (22.0%)	418	956	(50.3%)
Crete RES (0.0%)	0	0	(0.0%)
BESS (0.0%)	0	0	(0.0%)
HV Load (19.6%)	372	12	(0.6%)
MV Load (4.8%)	92	145	(7.6%)
LV Load (5.0%)	94	385	(20.2%)
Crete Load (0.0%)	0	0	(0.0%)
Pumping (0.0%)	0	6	(0.3%)
Exports		383	(20.2%)
Sys.Losses (0.0%)	0	0	(0.0%)
D/R Load (0.0%)	0	0	(0.0%)

