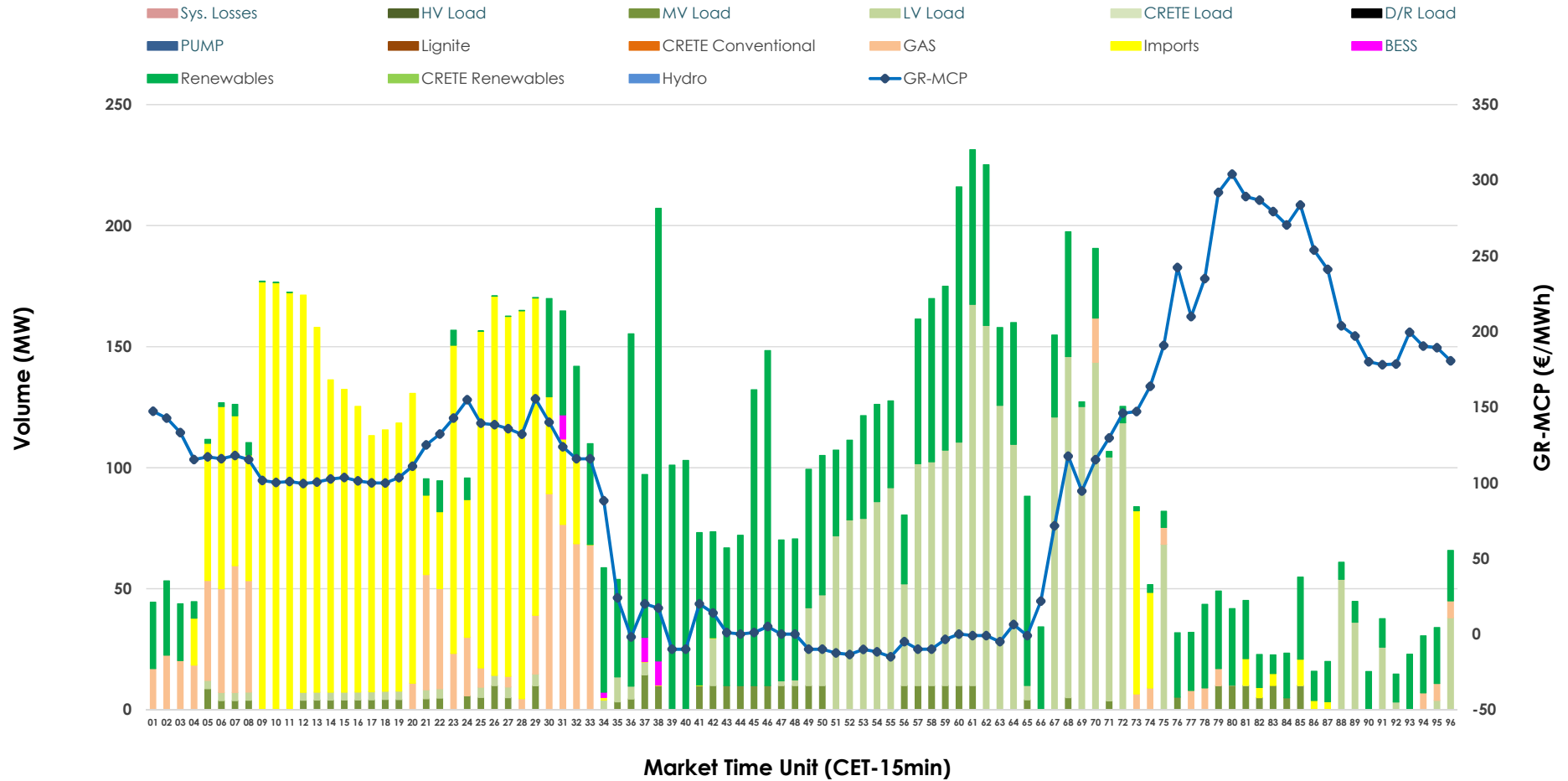


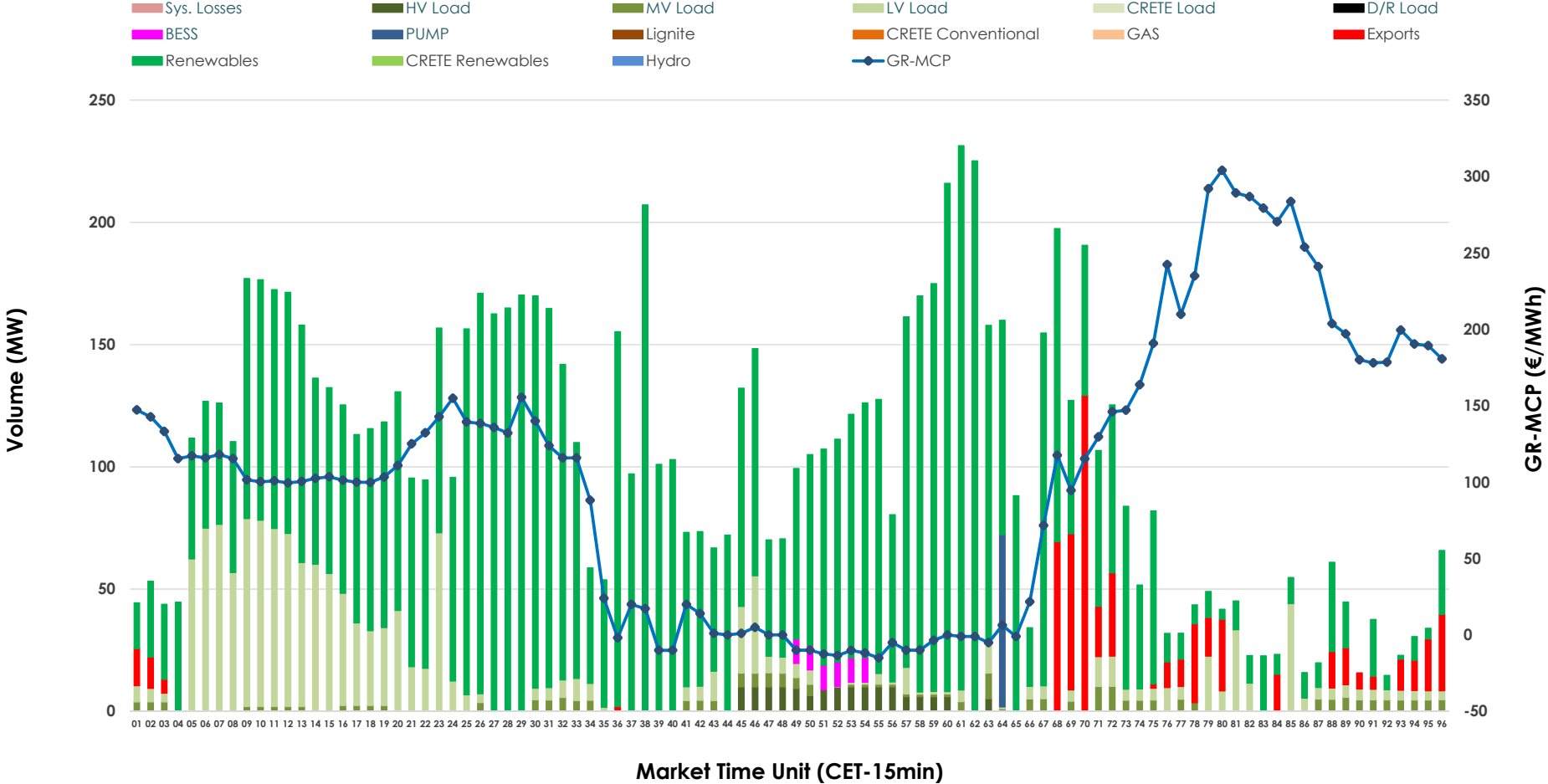


IDA '2' Market Outlook

04.05.2026 IDA '2' Market - Sell



04.05.2026 IDA '2' Market - Buy



GR Bidding Zone Weekly Figures

Delivery Day	28.04	29.04	30.04	01.05	02.05	03.05	04.05
	↓ -12%	↑ 45%	↓ -14%	↓ -32%	↑ 13%	↑ 8%	↑ 47%
Avg.MCP (€/MWh)	69.62	101.24	86.96	58.74	66.43	71.66	105.41
Max.MCP (€/MWh)	155.85	220.05	209.77	118.93	168.12	187.97	304.04
Min.MCP (€/MWh)	-25.33	-5.16	-5.23	-12.00	-20.00	-20.00	-15.01
	↓ -17%	↑ 2%	↑ 29%	↓ -18%	↑ 46%	↓ -25%	↑ 8%
Tot.Vol(GWh)	3.91	4.01	5.18	4.27	6.22	4.66	5.04

Trades by Order Type

Delivery Day		28.04	29.04	30.04	01.05	02.05	03.05	04.05	
Ord Price Type		Sell & Buy Trades in (GWh) per Price Type							(%)
PPT	(S)	0.000	0.000	0.000	0.000	0.000	0.000	0.000	0.00%
HBD	(S)	0.892	1.623	2.016	1.781	2.831	1.733	1.725	68.50%
BLK	(S)	0.000	0.000	0.000	0.000	0.000	0.000	0.000	0.00%
CPL	(S)	1.064	0.381	0.572	0.352	0.277	0.599	0.793	31.50%
PPT	(B)	0.000	0.000	0.000	0.000	0.000	0.000	0.000	0.00%
HBD	(B)	1.839	1.229	2.052	1.235	1.727	2.200	2.371	94.16%
BLK	(B)	0.000	0.000	0.000	0.000	0.000	0.000	0.000	0.00%
CPL	(B)	0.118	0.775	0.536	0.898	1.381	0.132	0.147	5.84%
		Sell & Buy Orders Traded per Price Type							(%)
PPT	(S)	0	0	0	0	0	0	0	0.00%
HBD	(S)	206	420	428	525	429	305	322	100.00%
BLK	(S)	0	0	0	0	0	0	0	0.00%
PPT	(B)	0	0	0	0	0	0	0	0.00%
HBD	(B)	512	512	448	344	395	466	562	100.00%
BLK	(B)	0	0	0	0	0	0	0	0.00%

- MCP** Market Clearing Price (€/MWh)
- PPT** Priority Price-Taking
- HBD** Hybrid
- BLK** Block
- CPL** Market Coupling Flow

Trade's Volume Mix

	Sell - MWh	Buy - MWh	
Lignite (0.0%)	0	0	(0.0%)
Crete Conv. (0.0%)	0	0	(0.0%)
Gas (8.3%)	209	0	(0.0%)
Hydro (0.0%)	0	0	(0.0%)
Imports (31.5%)	793		
RES (30.9%)	777	1,869	(74.2%)
Crete RES (0.0%)	0	0	(0.0%)
BESS (0.3%)	8	15	(0.6%)
HV Load (0.0%)	0	36	(1.4%)
MV Load (3.7%)	92	58	(2.3%)
LV Load (25.3%)	638	375	(14.9%)
Crete Load (0.0%)	0	0	(0.0%)
Pumping (0.0%)	0	18	(0.7%)
Exports		147	(5.8%)
Sys.Losses (0.0%)	0	0	(0.0%)
D/R Load (0.0%)	0	0	(0.0%)

