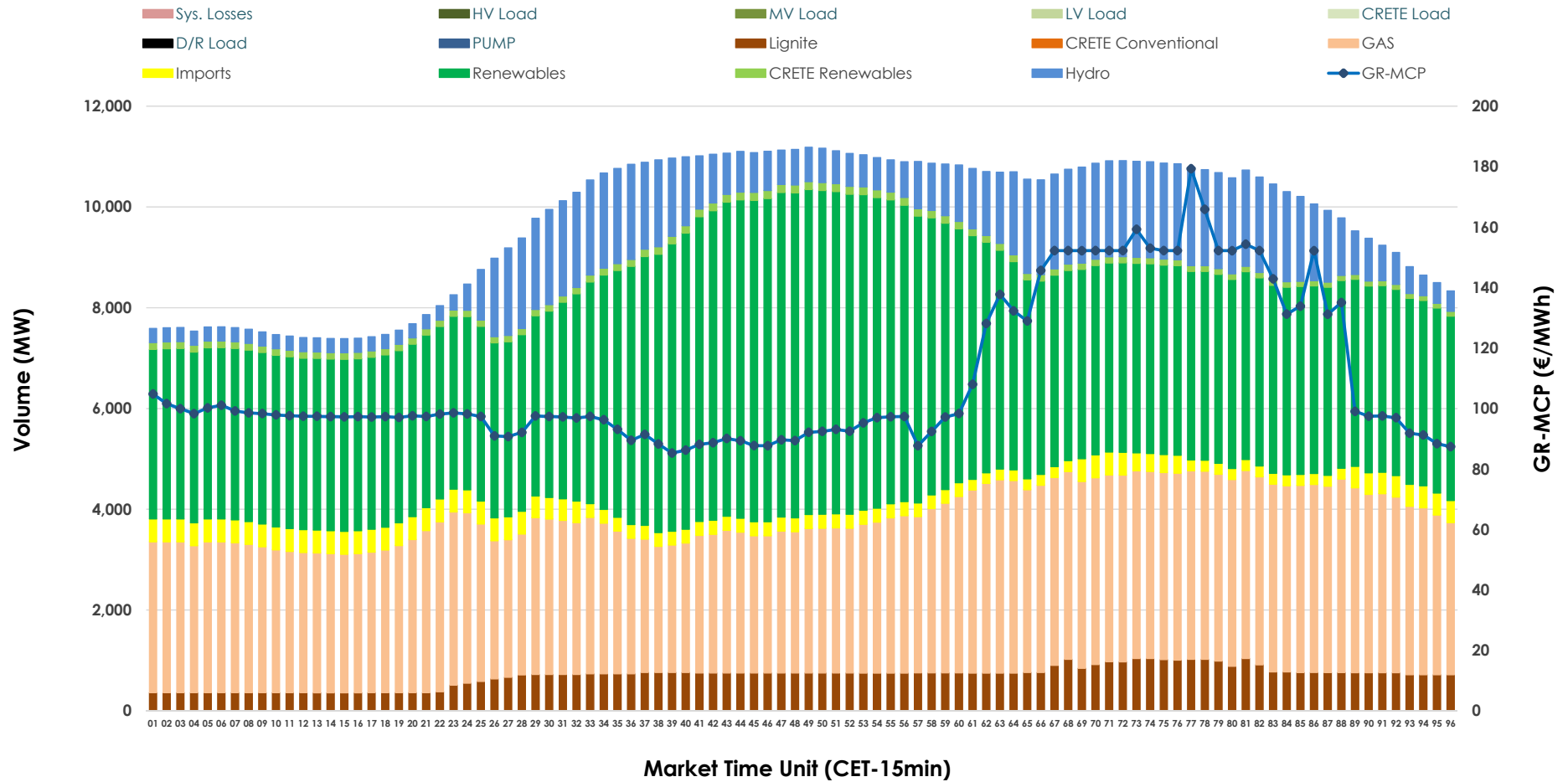


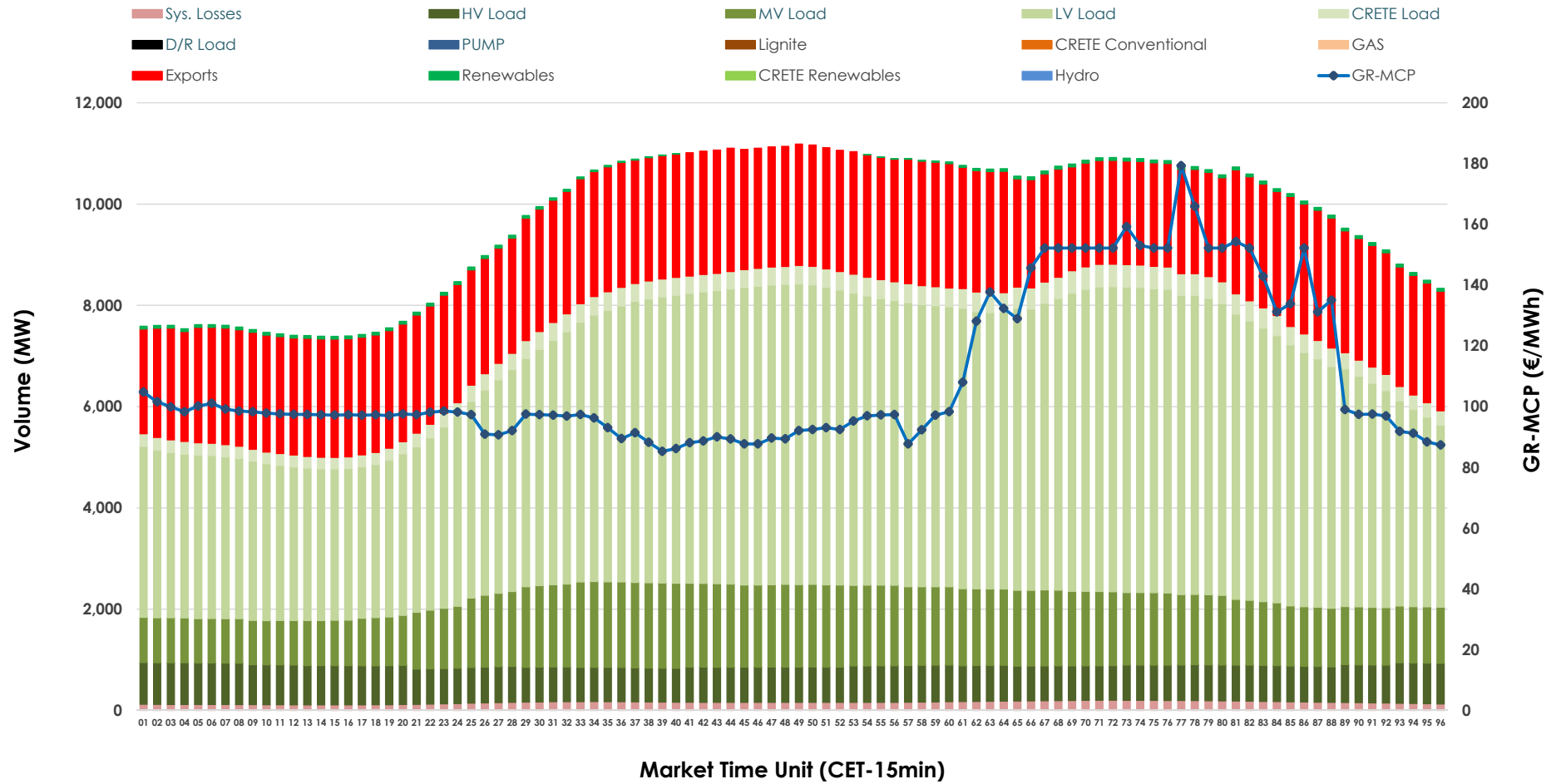


# Day-Ahead Market Outlook

## 19.01.2026 Day-Ahead Market - Sell



### 19.01.2026 Day-Ahead Market - Buy



### GR Bidding Zone Weekly Figures

Delivery Day	13.01	14.01	15.01	16.01	17.01	18.01	19.01
	↑ 53%	↓ -10%	→ 1%	↓ -5%	→ -24%	→ 0%	↗ 13%
<b>Avg.MCP (€/MWh)</b>	147.20	132.48	133.24	126.58	96.63	96.80	109.79
<b>Max.MCP (€/MWh)</b>	421.38	314.44	292.62	207.32	145.50	161.30	179.33
<b>Min.MCP (€/MWh)</b>	84.25	74.99	64.77	75.00	75.87	76.30	85.27
	↗ 1%	↓ -4%	↓ -2%	↓ -5%	↗ 3%	↓ -3%	↗ 14%
<b>Tot.Vol(GWh)</b>	458.11	437.97	429.85	408.72	421.63	409.46	467.60

### Trades by Order Type

Delivery Day		13.01	14.01	15.01	16.01	17.01	18.01	19.01	
<b>Ord Price Type</b>		<b>Sell &amp; Buy Trades in (GWh) per Price Type</b>							<b>(%)</b>
<b>PPT</b>	(S)	74.376	67.605	66.258	64.295	84.263	93.026	88.536	37.87%
<b>HBD</b>	(S)	80.274	72.540	75.381	69.338	77.931	77.276	91.996	39.35%
<b>BLK</b>	(S)	71.394	76.235	71.196	67.165	48.620	34.426	52.894	22.62%
<b>CPL</b>	(S)	3.009	2.605	2.091	3.563	0.000	0.000	0.375	0.16%
<b>PPT</b>	(B)	15.617	16.138	16.397	15.923	14.574	14.643	17.944	7.68%
<b>HBD</b>	(B)	175.387	165.530	161.620	156.175	154.660	150.739	176.493	75.49%
<b>BLK</b>	(B)	0.000	0.000	0.000	0.000	0.000	0.000	0.000	0.00%
<b>CPL</b>	(B)	38.050	37.316	36.909	32.263	41.579	39.346	39.363	16.84%
		<b>Sell &amp; Buy Orders Traded per Price Type</b>							<b>(%)</b>
<b>PPT</b>	(S)	2186	2159	2180	2164	2046	2185	2109	43.76%
<b>HBD</b>	(S)	3005	2917	2973	2962	2727	2718	2693	55.88%
<b>BLK</b>	(S)	24	25	21	22	21	14	17	0.35%
<b>PPT</b>	(B)	2294	2269	2301	2283	2274	2404	2357	36.00%
<b>HBD</b>	(B)	4079	4075	4109	4065	4057	4111	4190	64.00%
<b>BLK</b>	(B)	0	0	0	0	0	0	0	0.00%

**MCP** Market Clearing Price (€/MWh)  
**PPT** Priority Price-Taking  
**HBD** Hybrid  
**BLK** Block  
**CPL** Market Coupling Flow

### Trade's Volume Mix

	Sell - MWh	Buy - MWh	
<b>Lignite</b> (7.1%)	16,498	0	(0.0%)
<b>Crete Conv.</b> (0.0%)	0	0	(0.0%)
<b>Gas</b> (32.9%)	76,808	0	(0.0%)
<b>Hydro</b> (11.2%)	26,099	0	(0.0%)
<b>Imports</b> (3.5%)	8,296		
<b>RES</b> (44.1%)	102,995	981	(0.4%)
<b>Crete RES</b> (1.3%)	3,104	0	(0.0%)
<b>HV Load</b> (0.0%)	0	17,410	(7.4%)
<b>MV Load</b> (0.0%)	0	32,131	(13.7%)
<b>LV Load</b> (0.0%)	0	115,460	(49.4%)
<b>Crete Load</b> (0.0%)	0	8,192	(3.5%)
<b>Pumping</b> (0.0%)	0	0	(0.0%)
<b>Exports</b>		55,881	(23.9%)
<b>Sys.Losses</b> (0.0%)	0	3,745	(1.6%)
<b>D/R Load</b> (0.0%)	0	0	(0.0%)

