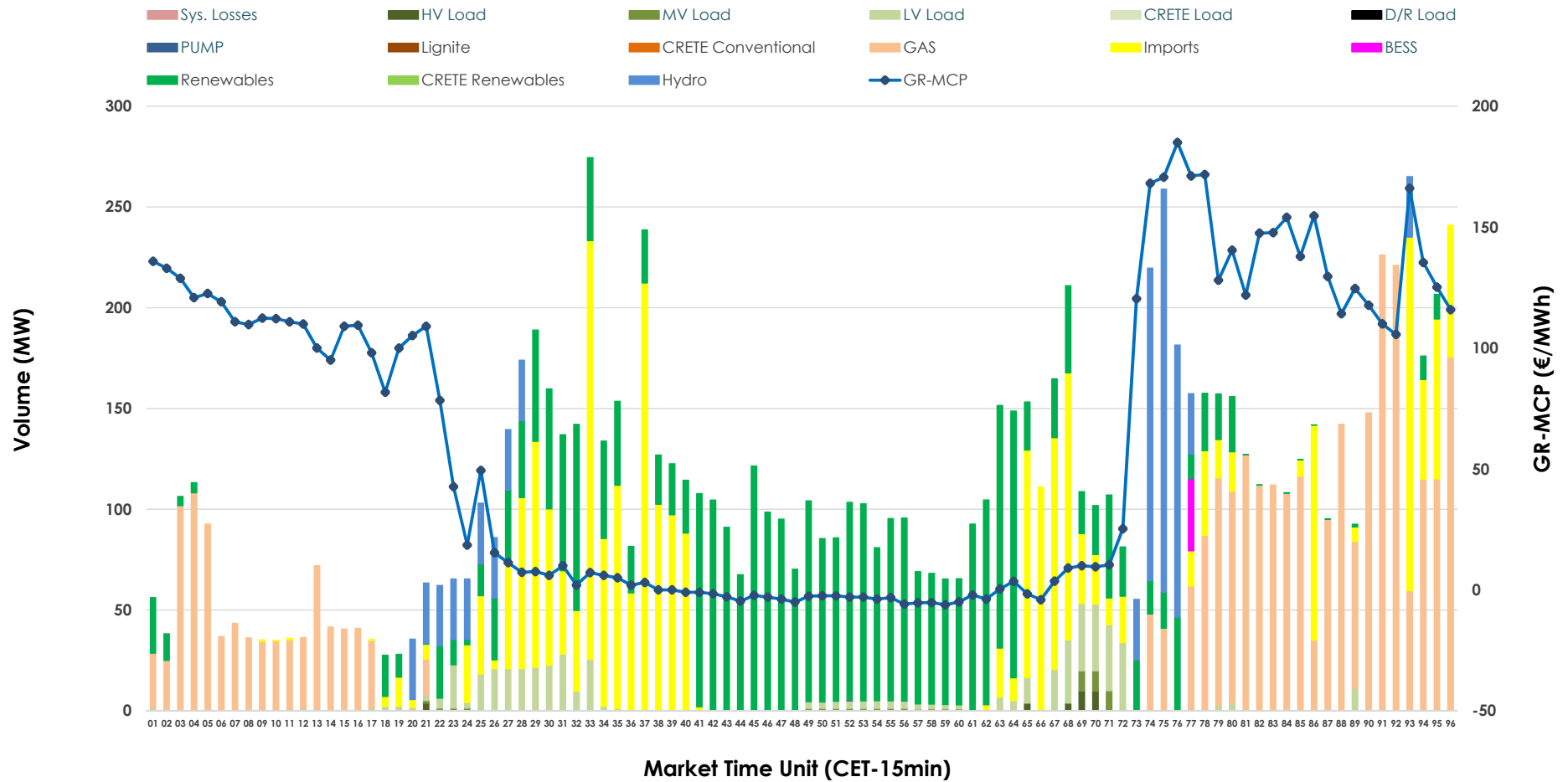


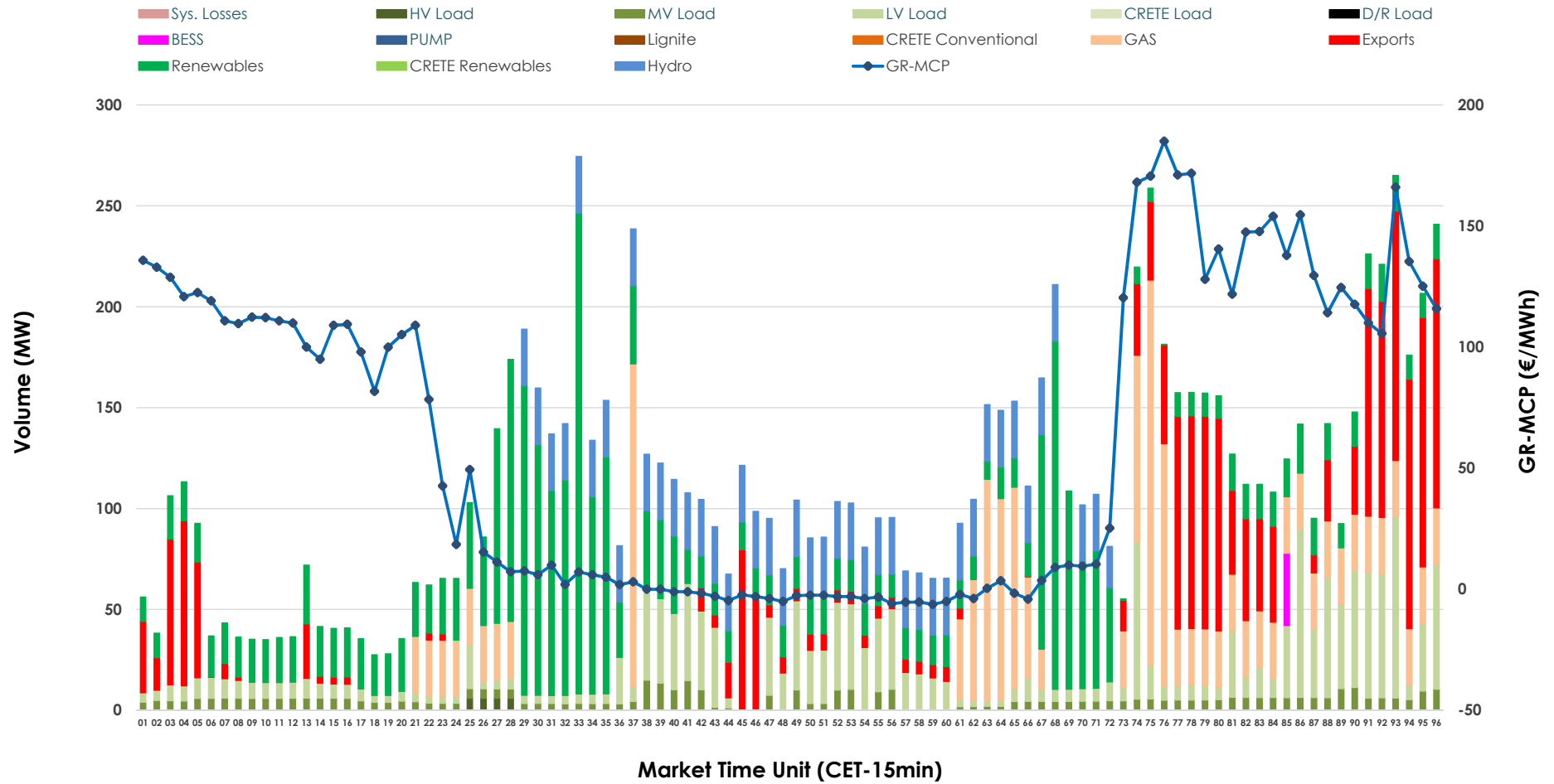


IDA '1' Market Outlook

14.06.2026 IDA '1' Market - Sell



14.06.2026 IDA '1' Market - Buy



GR Bidding Zone Weekly Figures

Delivery Day	08.06	09.06	10.06	11.06	12.06	13.06	14.06
	↑ 74%	↔ 18%	↓ -9%	↔ -4%	↔ 16%	↓ -57%	↔ 25%
Avg.MCP (€/MWh)	96.43	113.63	103.97	99.61	115.33	49.72	62.03
Max.MCP (€/MWh)	199.66	216.03	199.87	171.71	176.30	166.27	185.00
Min.MCP (€/MWh)	1.00	-4.76	-7.15	14.37	68.99	-31.98	-6.20
	↔ 7%	↓ -34%	↔ 7%	↓ -7%	↔ 2%	↑ 56%	↓ -25%
Tot.Vol(GWh)	6.87	4.54	4.85	4.51	4.60	7.18	5.41

Trades by Order Type

Delivery Day		08.06	09.06	10.06	11.06	12.06	13.06	14.06	
Ord Price Type		Sell & Buy Trades in (GWh) per Price Type							(%)
PPT	(S)	0.000	0.000	0.000	0.000	0.000	0.000	0.000	0.00%
HBD	(S)	3.130	1.484	1.778	1.639	1.731	3.148	2.036	75.28%
BLK	(S)	0.000	0.000	0.000	0.000	0.000	0.000	0.000	0.00%
CPL	(S)	0.307	0.785	0.647	0.617	0.571	0.441	0.669	24.72%
PPT	(B)	0.000	0.000	0.000	0.000	0.000	0.000	0.000	0.00%
HBD	(B)	1.796	1.388	0.828	1.062	1.814	3.308	2.175	80.42%
BLK	(B)	0.000	0.000	0.000	0.000	0.000	0.000	0.000	0.00%
CPL	(B)	1.641	0.881	1.597	1.194	0.488	0.281	0.529	19.58%
		Sell & Buy Orders Traded per Price Type							(%)
PPT	(S)	0	0	0	0	0	0	0	0.00%
HBD	(S)	369	211	376	209	411	335	224	100.00%
BLK	(S)	0	0	0	0	0	0	0	0.00%
PPT	(B)	0	0	0	0	0	0	0	0.00%
HBD	(B)	1013	820	549	639	749	739	681	100.00%
BLK	(B)	0	0	0	0	0	0	0	0.00%

- MCP** Market Clearing Price (€/MWh)
- PPT** Priority Price-Taking
- HBD** Hybrid
- BLK** Block
- CPL** Market Coupling Flow

Trade's Volume Mix

	Sell - MWh	Buy - MWh	
Lignite	0	0	(0.0%)
Crete Conv.	0	0	(0.0%)
Gas	823	464	(17.2%)
Hydro	213	299	(11.1%)
Imports	669		
RES	845	813	(30.1%)
Crete RES	0	0	(0.0%)
BESS	9	9	(0.3%)
HV Load	8	6	(0.2%)
MV Load	12	127	(4.7%)
LV Load	126	457	(16.9%)
Crete Load	0	0	(0.0%)
Pumping	0	0	(0.0%)
Exports		529	(19.6%)
Sys.Losses	0	0	(0.0%)
D/R Load	0	0	(0.0%)

