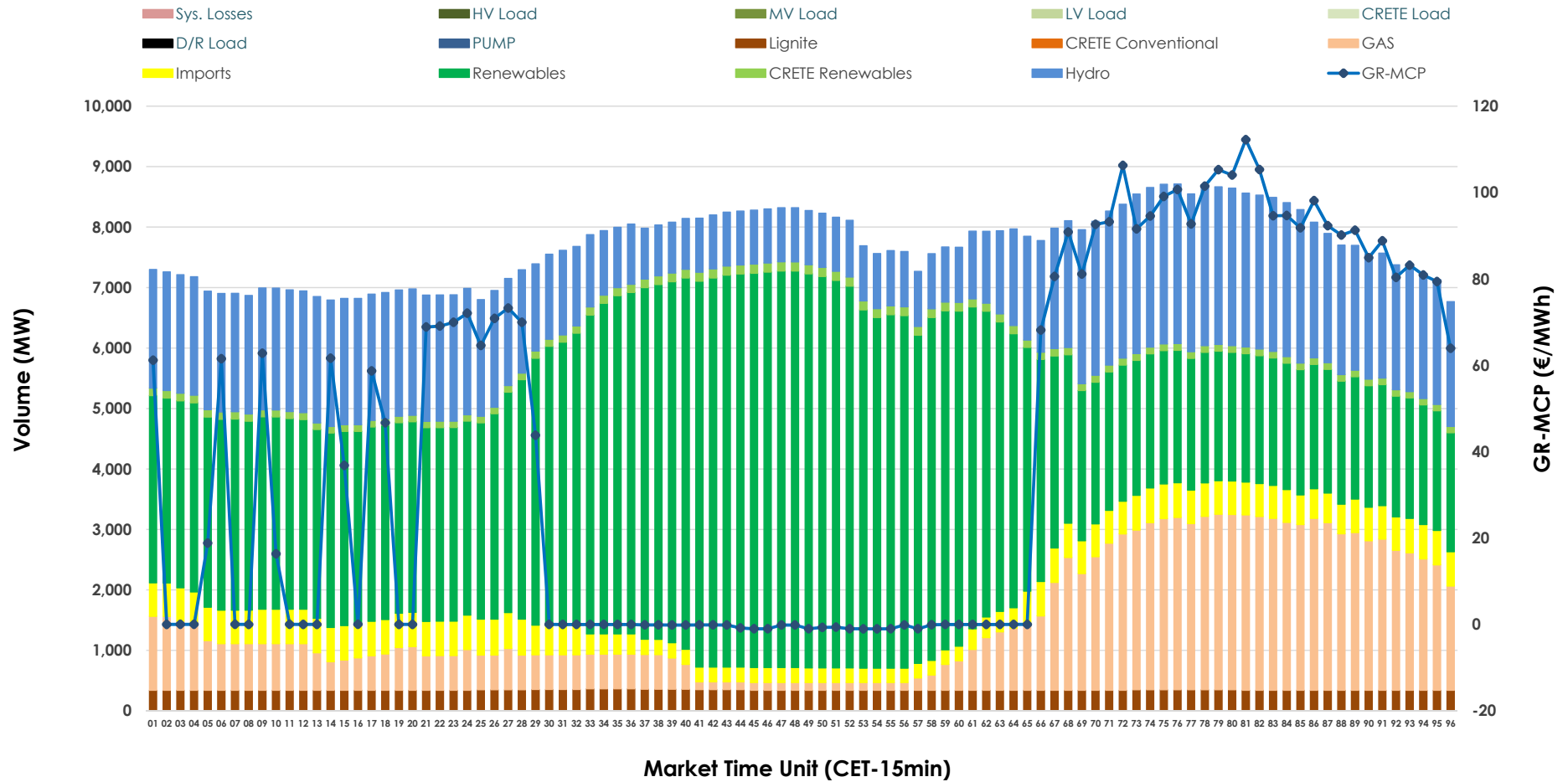


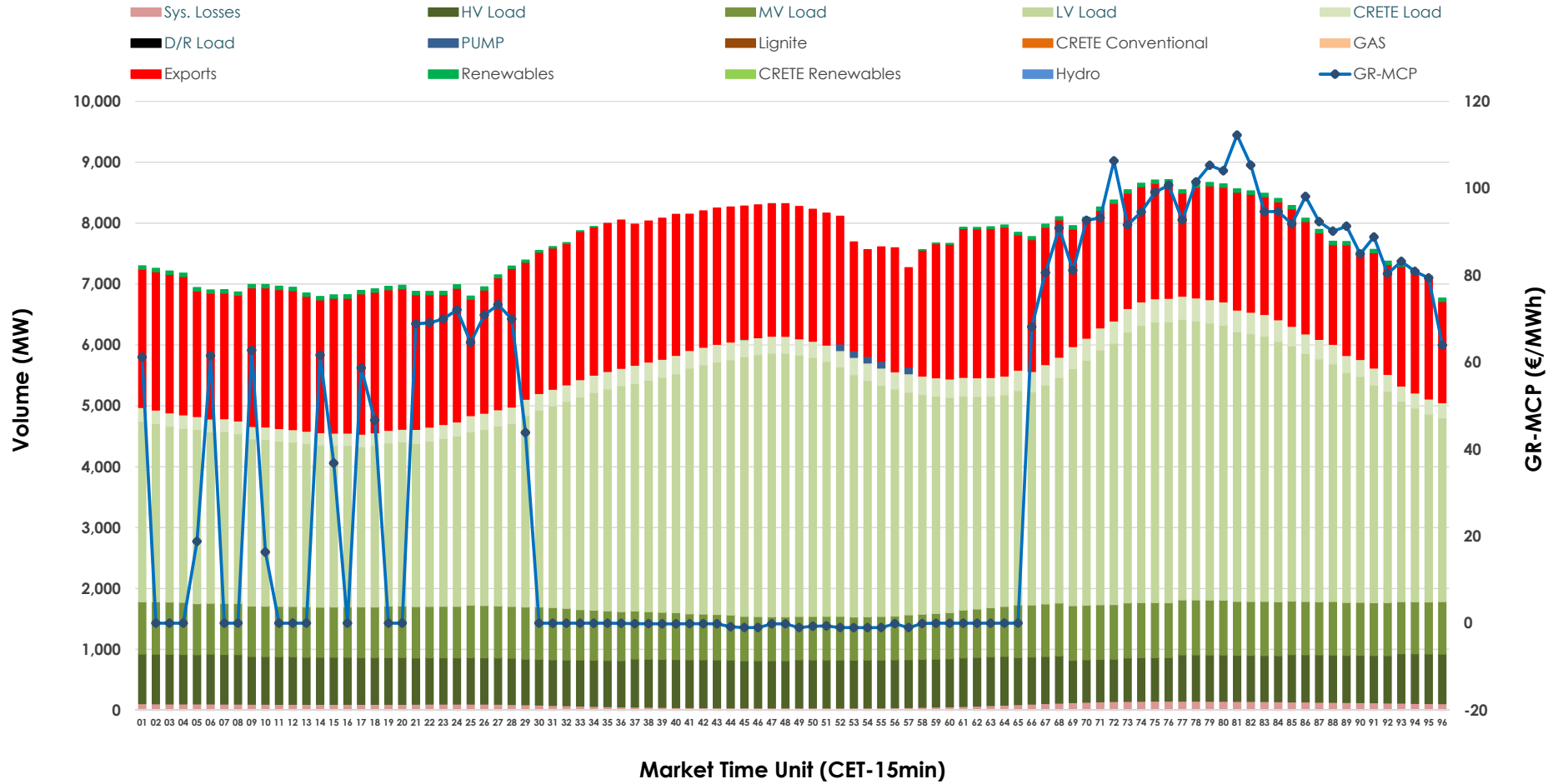


Day-Ahead Market Outlook

01.03.2026 Day-Ahead Market - Sell



01.03.2026 Day-Ahead Market - Buy



GR Bidding Zone Weekly Figures

Delivery Day	23.02	24.02	25.02	26.02	27.02	28.02	01.03
	👇 -3%	👆 48%	👇 -16%	👆 5%	👆 15%	👇 -21%	👇 -23%
Avg.MCP (€/MWh)	43.94	65.00	54.54	57.09	65.66	52.12	40.11
Max.MCP (€/MWh)	145.00	144.77	147.61	129.65	146.17	105.16	112.24
Min.MCP (€/MWh)	-25.00	0.00	0.00	-0.01	0.01	-0.04	-1.03
	👇 -2%	👆 10%	➡️ 0%	👆 4%	👇 -1%	👇 -7%	➡️ -1%
Tot.Vol(GWh)	351.59	385.95	387.02	403.23	399.06	371.47	369.53

Trades by Order Type

Delivery Day		23.02	24.02	25.02	26.02	27.02	28.02	01.03	
Ord Price Type		Sell & Buy Trades in (GWh) per Price Type							(%)
PPT	(S)	112.438	113.831	106.228	115.405	107.369	113.204	110.143	59.61%
HBD	(S)	43.541	58.754	62.460	64.030	66.550	56.490	60.318	32.65%
BLK	(S)	19.815	20.389	23.405	22.178	25.283	16.041	14.306	7.74%
CPL	(S)	0.000	0.000	1.418	0.000	0.327	0.000	0.000	0.00%
PPT	(B)	12.390	12.416	13.257	13.008	12.878	13.841	12.531	6.78%
HBD	(B)	126.507	145.355	146.689	148.228	150.080	138.903	130.663	70.72%
BLK	(B)	0.000	0.000	0.000	0.000	0.000	0.000	0.000	0.00%
CPL	(B)	36.898	35.202	33.565	40.377	36.571	32.991	41.573	22.50%
		Sell & Buy Orders Traded per Price Type							(%)
PPT	(S)	2534	2559	2404	2414	2382	2360	2304	50.49%
HBD	(S)	1926	2570	2410	2446	2859	2414	2254	49.40%
BLK	(S)	8	9	9	8	12	7	5	0.11%
PPT	(B)	2215	2216	2224	2237	2233	2317	2301	36.30%
HBD	(B)	4319	4109	4137	4113	4005	4039	4038	63.70%
BLK	(B)	0	0	0	0	0	0	0	0.00%

MCP Market Clearing Price (€/MWh)
PPT Priority Price-Taking
HBD Hybrid
BLK Block
CPL Market Coupling Flow

Trade's Volume Mix

		Sell - MWh	Buy - MWh	
Lignite	(4.5%)	8,248	0	(0.0%)
Crete Conv.	(0.0%)	0	0	(0.0%)
Gas	(15.2%)	28,110	0	(0.0%)
Hydro	(22.6%)	41,804	0	(0.0%)
Imports	(6.0%)	11,007		
RES	(50.1%)	92,646	872	(0.5%)
Crete RES	(1.6%)	2,951	0	(0.0%)
HV Load	(0.0%)	0	18,559	(10.0%)
MV Load	(0.0%)	0	19,848	(10.7%)
LV Load	(0.0%)	0	85,660	(46.4%)
Crete Load	(0.0%)	0	6,823	(3.7%)
Pumping	(0.0%)	0	144	(0.1%)
Exports			50,622	(27.4%)
Sys.Losses	(0.0%)	0	2,239	(1.2%)
D/R Load	(0.0%)	0	0	(0.0%)

