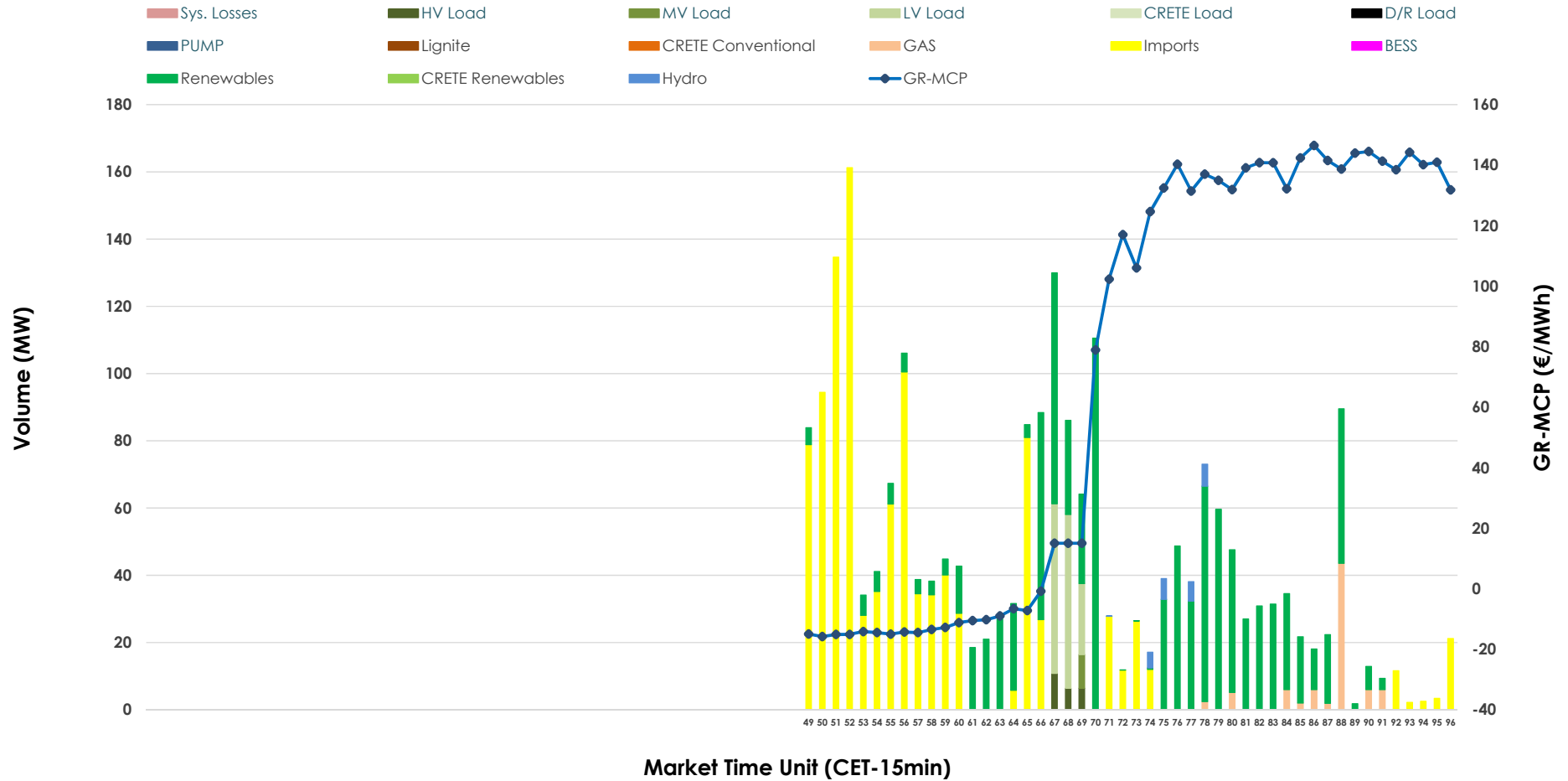


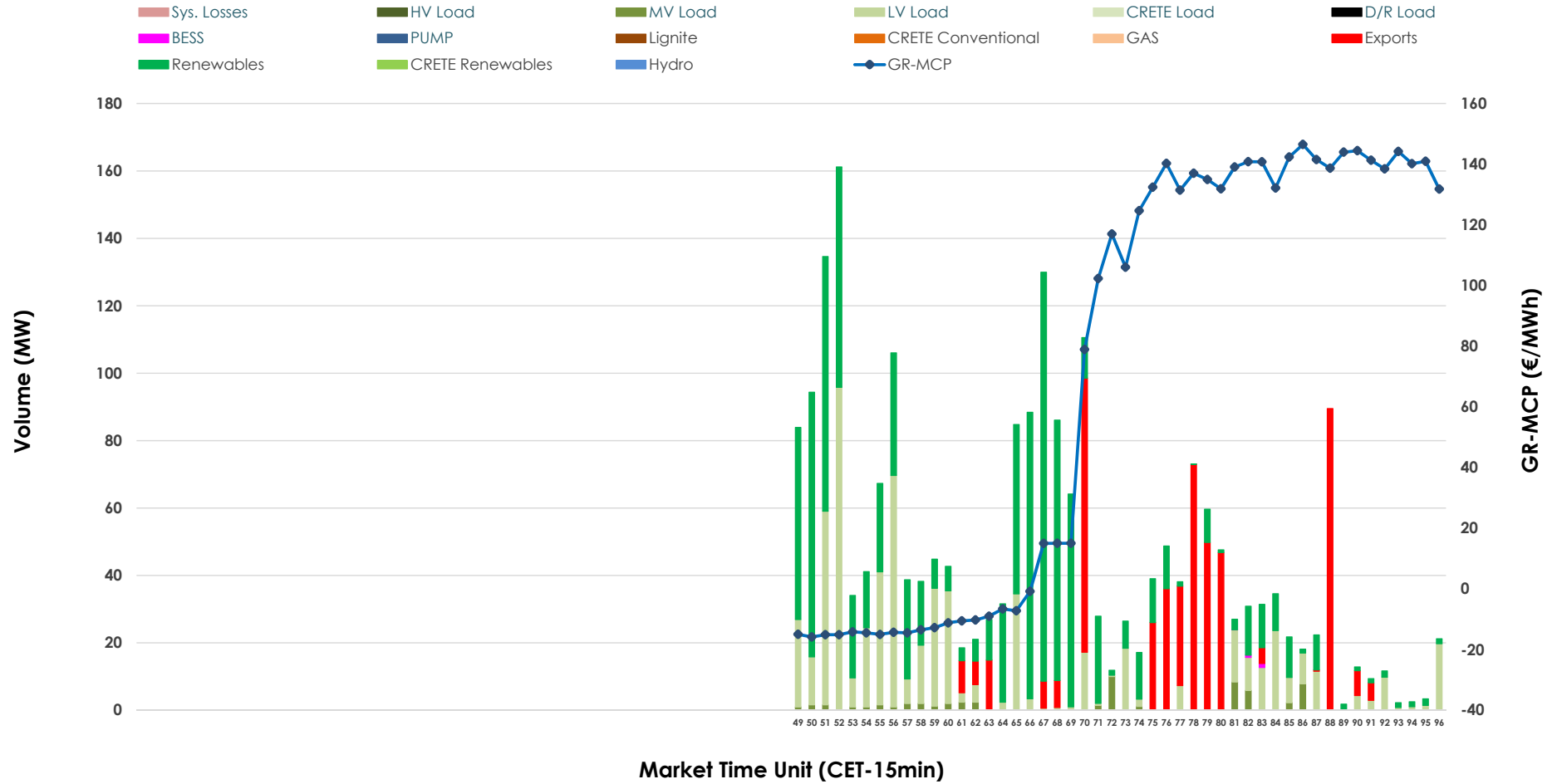


IDA '3' Market Outlook

17.05.2026 IDA '3' Market - Sell



17.05.2026 IDA '3' Market - Buy



GR Bidding Zone Weekly Figures

Delivery Day	11.05	12.05	13.05	14.05	15.05	16.05	17.05
	↗ 24%	↘ -36%	↗ 44%	↘ -8%	↘ -8%	↘ -18%	↗ 3%
Avg.MCP (€/MWh)	108.59	69.35	99.87	91.74	84.49	69.38	71.12
Max.MCP (€/MWh)	195.45	186.70	193.09	241.73	153.65	132.56	146.50
Min.MCP (€/MWh)	20.00	0.90	-3.00	-10.36	0.01	1.52	-15.83
	↗ 73%	↗ 4%	↔ -1%	↘ -21%	↗ 49%	↘ -7%	↘ -48%
Tot.Vol(GWh)	1.95	2.02	2.00	1.57	2.34	2.18	1.14

Trades by Order Type

Delivery Day		11.05	12.05	13.05	14.05	15.05	16.05	17.05	
Ord Price Type		Sell & Buy Trades in (GWh) per Price Type							(%)
PPT	(S)	0.000	0.000	0.000	0.000	0.000	0.000	0.000	0.00%
HBD	(S)	0.661	1.009	0.965	0.623	0.806	1.089	0.304	53.33%
BLK	(S)	0.000	0.000	0.000	0.000	0.000	0.000	0.000	0.00%
CPL	(S)	0.312	0.000	0.036	0.163	0.364	0.000	0.266	46.67%
PPT	(B)	0.000	0.000	0.000	0.000	0.000	0.000	0.000	0.00%
HBD	(B)	0.736	0.844	0.874	0.771	1.144	0.603	0.446	78.24%
BLK	(B)	0.000	0.000	0.000	0.000	0.000	0.000	0.000	0.00%
CPL	(B)	0.237	0.165	0.127	0.015	0.025	0.486	0.124	21.76%
		Sell & Buy Orders Traded per Price Type							(%)
PPT	(S)	0	0	0	0	0	0	0	0.00%
HBD	(S)	203	185	254	164	112	220	81	100.00%
BLK	(S)	0	0	0	0	0	0	0	0.00%
PPT	(B)	0	0	0	0	0	0	0	0.00%
HBD	(B)	135	115	183	112	246	129	163	100.00%
BLK	(B)	0	0	0	0	0	0	0	0.00%

- MCP** Market Clearing Price (€/MWh)
- PPT** Priority Price-Taking
- HBD** Hybrid
- BLK** Block
- CPL** Market Coupling Flow

Trade's Volume Mix

		Sell - MWh	Buy - MWh	
Lignite	(0.0%)	0	0	(0.0%)
Crete Conv.	(0.0%)	0	0	(0.0%)
Gas	(3.5%)	20	0	(0.0%)
Hydro	(1.0%)	6	0	(0.0%)
Imports	(46.7%)	266		
RES	(41.9%)	239	267	(46.9%)
Crete RES	(0.0%)	0	0	(0.0%)
BESS	(0.0%)	0	0	(0.1%)
HV Load	(1.0%)	6	0	(0.0%)
MV Load	(0.4%)	3	14	(2.5%)
LV Load	(5.5%)	31	164	(28.8%)
Crete Load	(0.0%)	0	0	(0.0%)
Pumping	(0.0%)	0	0	(0.0%)
Exports			124	(21.8%)
Sys.Losses	(0.0%)	0	0	(0.0%)
D/R Load	(0.0%)	0	0	(0.0%)

