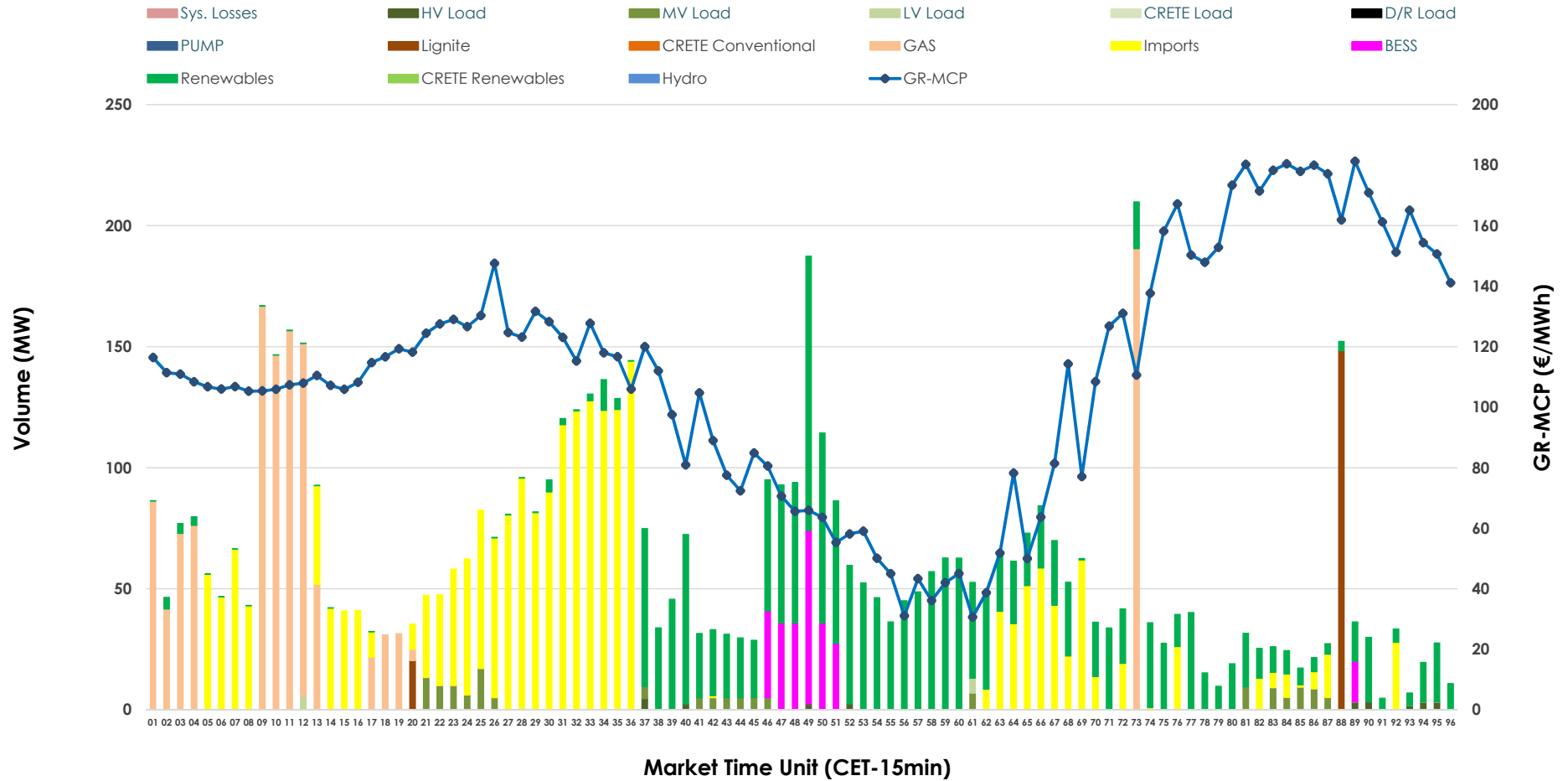


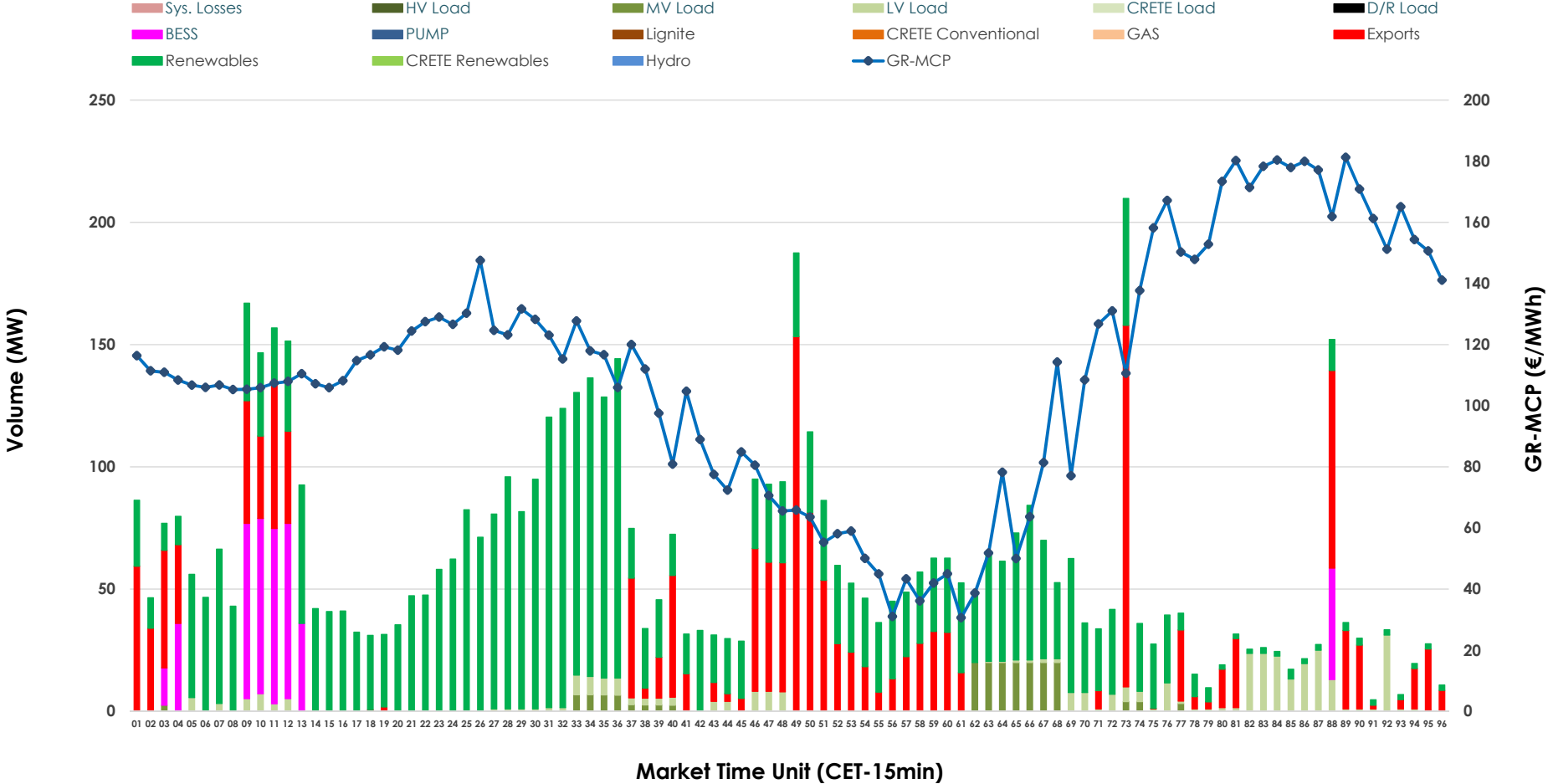


IDA '2' Market Outlook

05.06.2026 IDA '2' Market - Sell



05.06.2026 IDA '2' Market - Buy



GR Bidding Zone Weekly Figures

Delivery Day	30.05	31.05	01.06	02.06	03.06	04.06	05.06
	↗ 13%	↘ -5%	↗ 20%	↘ -7%	↘ -10%	↗ 2%	↗ 26%
Avg.MCP (€/MWh)	90.81	86.46	103.88	96.79	86.72	88.19	111.27
Max.MCP (€/MWh)	201.29	159.14	212.74	173.58	155.00	210.77	181.27
Min.MCP (€/MWh)	-4.54	-0.07	-6.67	0.75	-10.47	0.00	30.63
	↘ -30%	↘ -11%	↗ 35%	↗ 37%	↘ -49%	↗ 13%	↘ -9%
Tot.Vol(GWh)	3.54	3.14	4.24	5.80	2.94	3.33	3.03

Trades by Order Type

Delivery Day		30.05	31.05	01.06	02.06	03.06	04.06	05.06	
Ord Price Type		Sell & Buy Trades in (GWh) per Price Type							(%)
PPT	(S)	0.000	0.000	0.000	0.000	0.000	0.000	0.000	0.00%
HBD	(S)	1.069	0.887	1.649	1.793	1.455	0.958	0.948	62.46%
BLK	(S)	0.000	0.000	0.000	0.000	0.000	0.000	0.000	0.00%
CPL	(S)	0.700	0.683	0.472	1.107	0.016	0.707	0.570	37.54%
PPT	(B)	0.000	0.000	0.000	0.000	0.000	0.000	0.000	0.00%
HBD	(B)	1.405	1.182	1.661	2.573	1.302	1.332	1.114	73.38%
BLK	(B)	0.000	0.000	0.000	0.000	0.000	0.000	0.000	0.00%
CPL	(B)	0.364	0.388	0.459	0.327	0.170	0.333	0.404	26.62%
		Sell & Buy Orders Traded per Price Type							(%)
PPT	(S)	0	0	0	0	0	0	0	0.00%
HBD	(S)	161	149	321	335	226	210	232	100.00%
BLK	(S)	0	0	0	0	0	0	0	0.00%
PPT	(B)	0	0	0	0	0	0	0	0.00%
HBD	(B)	435	357	592	736	418	380	483	100.00%
BLK	(B)	0	0	0	0	0	0	0	0.00%

- MCP** Market Clearing Price (€/MWh)
- PPT** Priority Price-Taking
- HBD** Hybrid
- BLK** Block
- CPL** Market Coupling Flow

Trade's Volume Mix

	Sell - MWh	Buy - MWh	
Lignite (2.8%)	42	0	(0.0%)
Crete Conv. (0.0%)	0	0	(0.0%)
Gas (20.2%)	306	0	(0.0%)
Hydro (0.0%)	0	0	(0.0%)
Imports (37.5%)	570		
RES (32.1%)	488	874	(57.6%)
Crete RES (0.0%)	0	0	(0.0%)
BESS (4.3%)	65	105	(6.9%)
HV Load (0.4%)	7	0	(0.0%)
MV Load (2.5%)	38	48	(3.1%)
LV Load (0.2%)	3	86	(5.7%)
Crete Load (0.0%)	0	0	(0.0%)
Pumping (0.0%)	0	0	(0.0%)
Exports		404	(26.6%)
Sys.Losses (0.0%)	0	0	(0.0%)
D/R Load (0.0%)	0	0	(0.0%)

