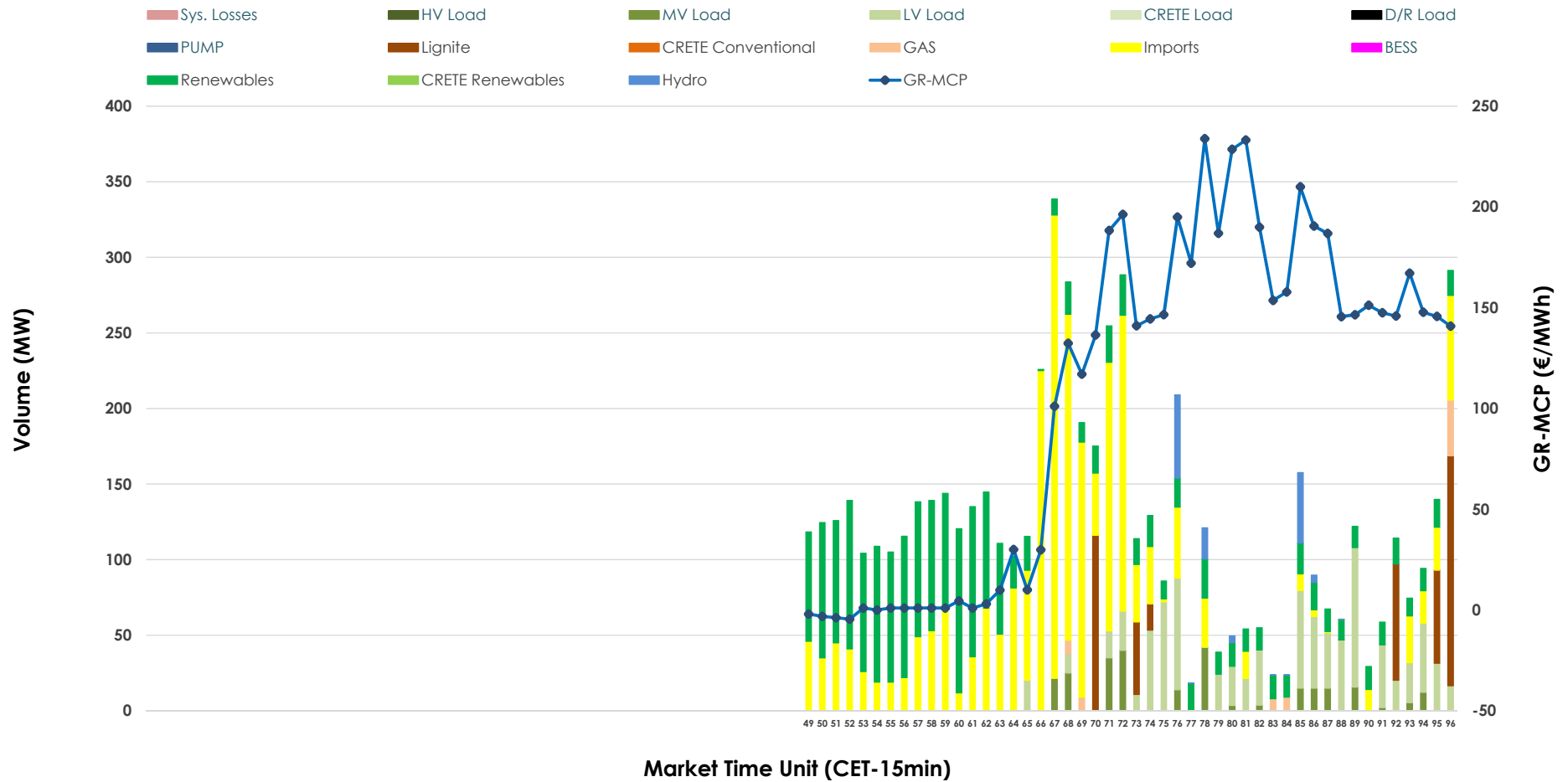


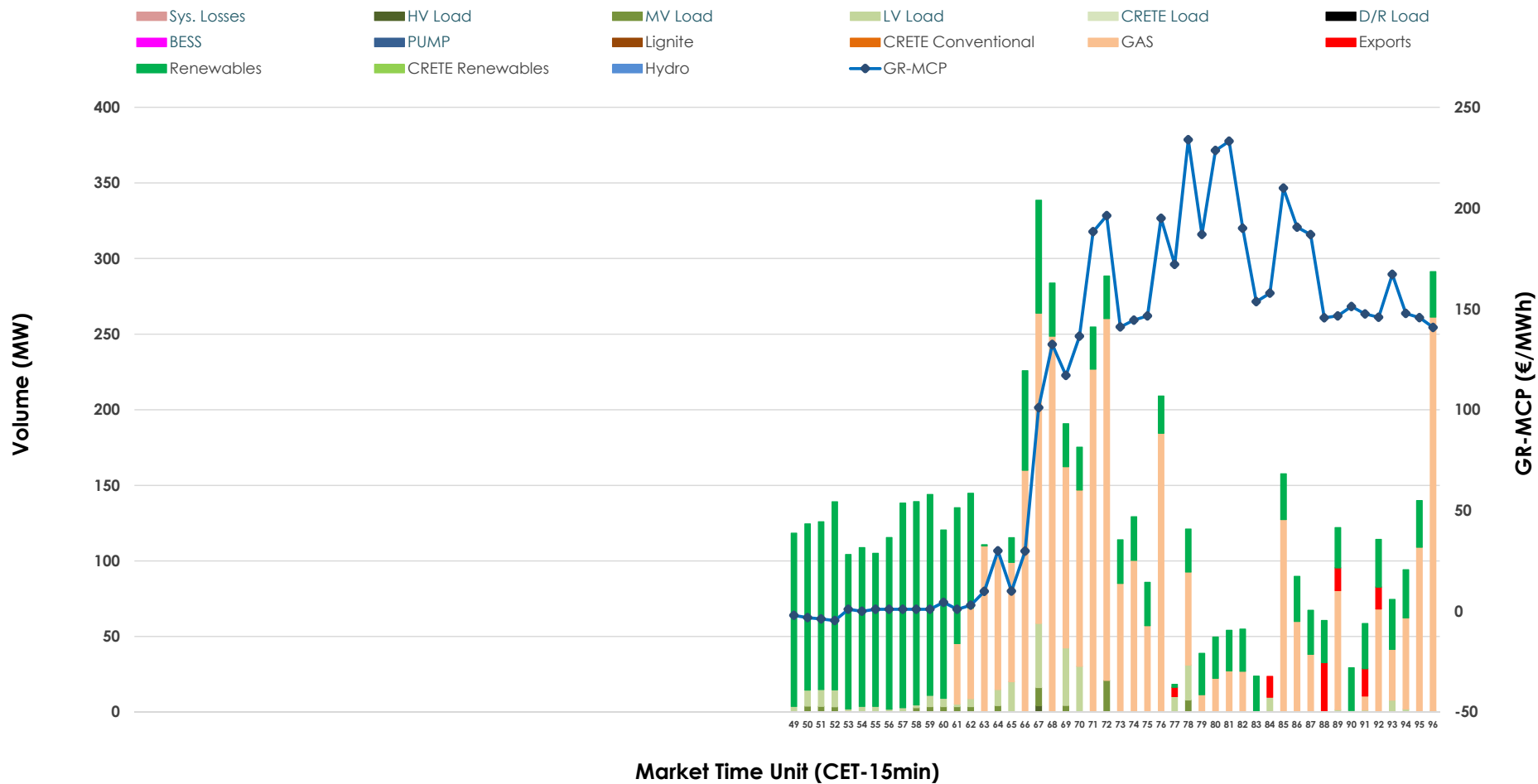


IDA '3' Market Outlook

29.04.2026 IDA '3' Market - Sell



29.04.2026 IDA '3' Market - Buy



GR Bidding Zone Weekly Figures

Delivery Day	23.04	24.04	25.04	26.04	27.04	28.04	29.04
		↑ 49%	↓ -41%	↔ 15%	↔ 15%	↔ 4%	↑ 50%
Avg.MCP (€/MWh)	57.84	86.15	50.89	58.43	67.48	70.09	105.43
Max.MCP (€/MWh)	220.01	231.35	181.23	137.21	184.30	157.70	233.89
Min.MCP (€/MWh)	-97.63	0.00	-49.00	-65.00	-15.66	-19.62	-4.58
		↑ 159%	↓ -46%	↔ -5%	↑ 53%	↔ -13%	↑ 92%
Tot.Vol(GWh)	0.89	2.31	1.25	1.18	1.81	1.58	3.03

Trades by Order Type

Delivery Day		23.04	24.04	25.04	26.04	27.04	28.04	29.04	
Ord Price Type		Sell & Buy Trades in (GWh) per Price Type							(%)
PPT	(S)	0.000	0.000	0.000	0.000	0.000	0.000	0.000	0.00%
HBD	(S)	0.345	0.961	0.579	0.491	0.748	0.490	0.910	60.00%
BLK	(S)	0.000	0.000	0.000	0.000	0.000	0.000	0.000	0.00%
CPL	(S)	0.101	0.194	0.045	0.099	0.157	0.298	0.607	40.00%
PPT	(B)	0.000	0.000	0.000	0.000	0.000	0.000	0.000	0.00%
HBD	(B)	0.430	1.072	0.487	0.493	0.608	0.633	1.492	98.35%
BLK	(B)	0.000	0.000	0.000	0.000	0.000	0.000	0.000	0.00%
CPL	(B)	0.016	0.083	0.137	0.097	0.296	0.155	0.025	1.65%
		Sell & Buy Orders Traded per Price Type							(%)
PPT	(S)	0	0	0	0	0	0	0	0.00%
HBD	(S)	101	260	174	148	192	105	230	100.00%
BLK	(S)	0	0	0	0	0	0	0	0.00%
PPT	(B)	0	0	0	0	0	0	0	0.00%
HBD	(B)	145	193	94	85	175	247	178	100.00%
BLK	(B)	0	0	0	0	0	0	0	0.00%

- MCP** Market Clearing Price (€/MWh)
- PPT** Priority Price-Taking
- HBD** Hybrid
- BLK** Block
- CPL** Market Coupling Flow

Trade's Volume Mix

	Sell - MWh	Buy - MWh	
Lignite (7.8%)	118	0	(0.0%)
Crete Conv. (0.0%)	0	0	(0.0%)
Gas (1.2%)	18	779	(51.3%)
Hydro (2.2%)	33	0	(0.0%)
Imports (40.0%)	607		
RES (30.2%)	459	624	(41.1%)
Crete RES (0.0%)	0	0	(0.0%)
BESS (0.0%)	0	0	(0.0%)
HV Load (0.0%)	0	1	(0.1%)
MV Load (4.4%)	66	20	(1.3%)
LV Load (14.3%)	216	69	(4.5%)
Crete Load (0.0%)	0	0	(0.0%)
Pumping (0.0%)	0	0	(0.0%)
Exports		25	(1.6%)
Sys.Losses (0.0%)	0	0	(0.0%)
D/R Load (0.0%)	0	0	(0.0%)

