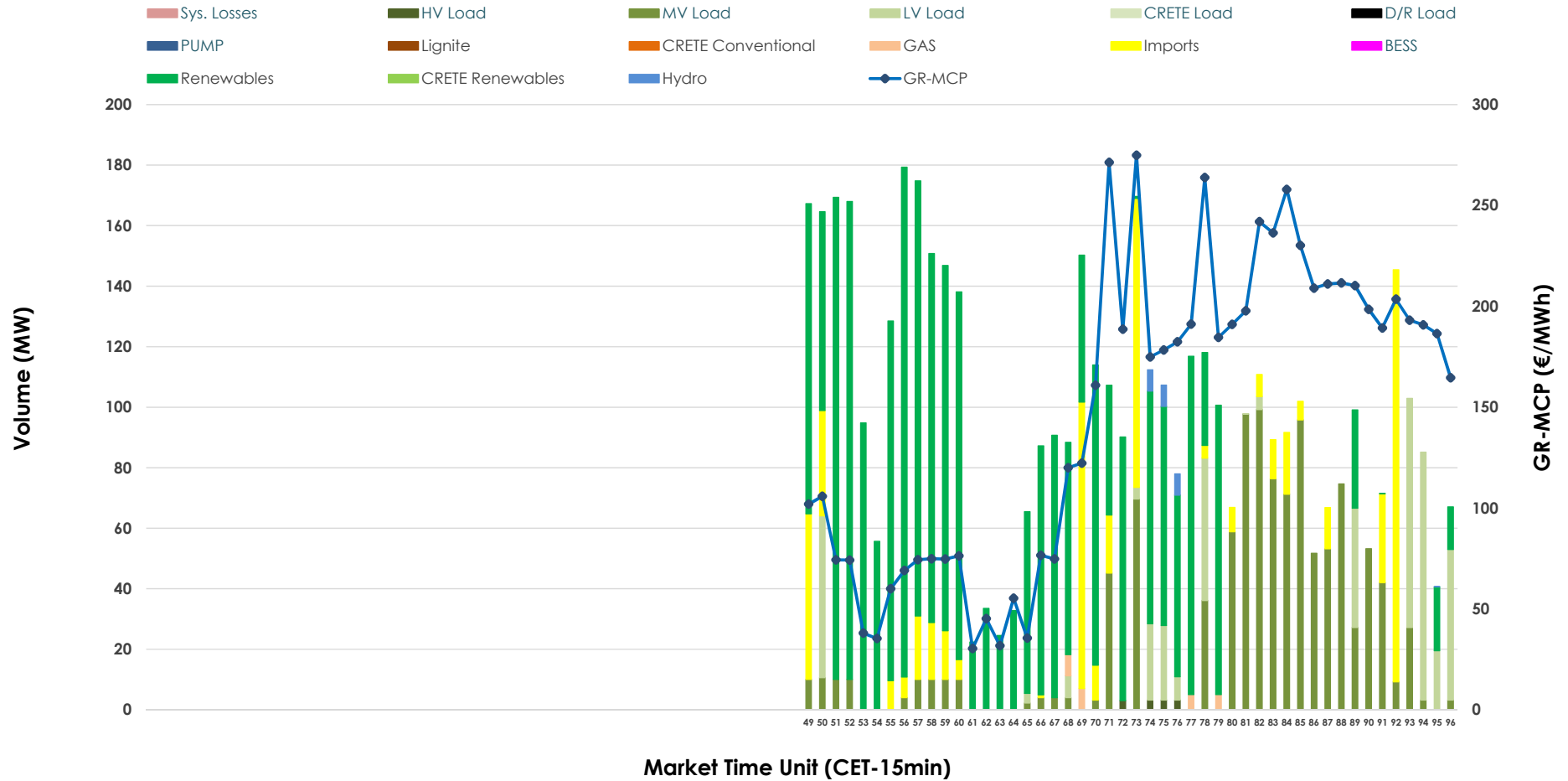


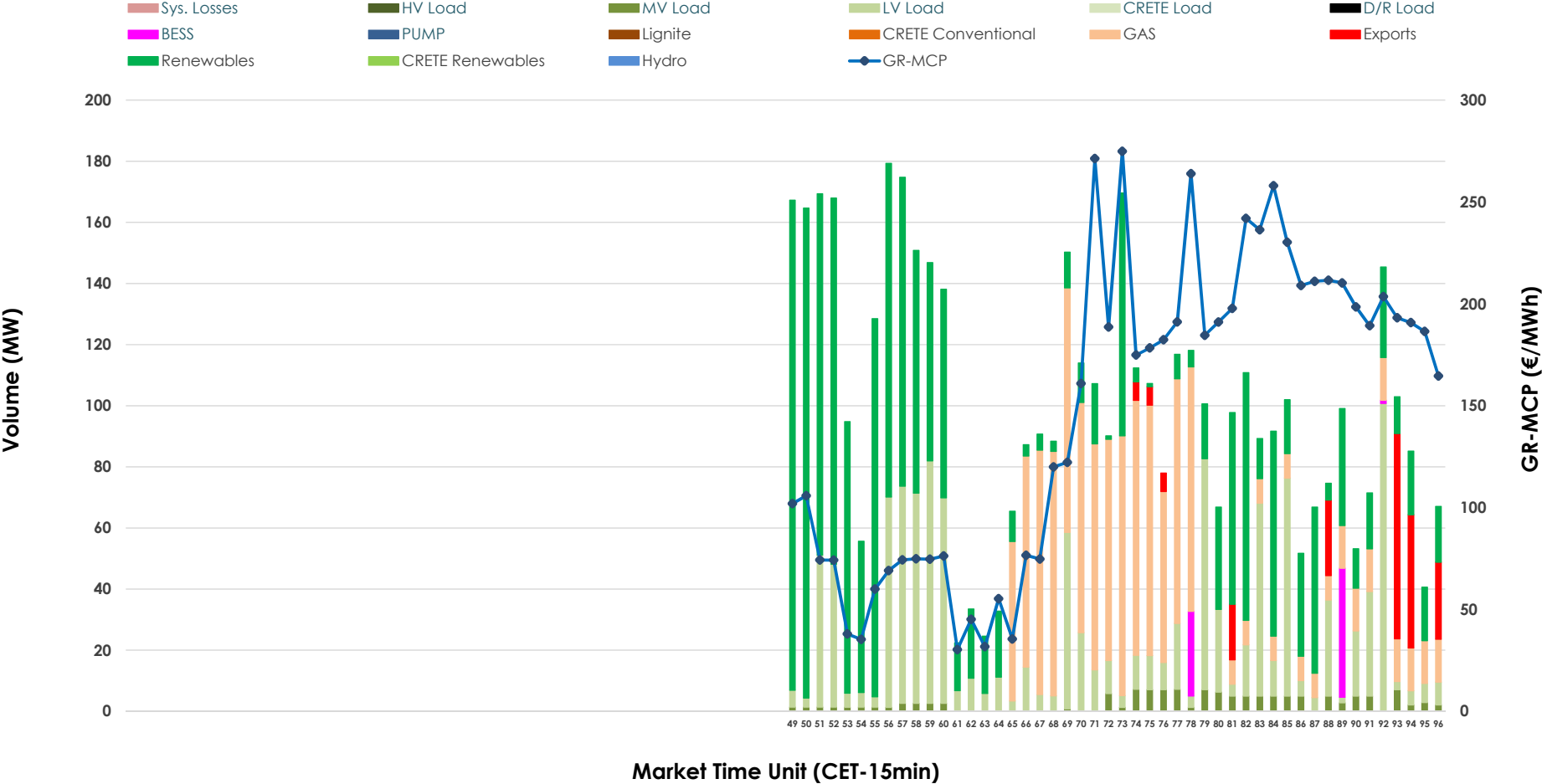


IDA '3' Market Outlook

30.06.2026 IDA '3' Market - Sell



30.06.2026 IDA '3' Market - Buy



GR Bidding Zone Weekly Figures

Delivery Day	24.06	25.06	26.06	27.06	28.06	29.06	30.06
	↗ 5%	↘ -24%	↘ -39%	↗ 7%	↘ -16%	↗ 53%	↗ 34%
Avg.MCP (€/MWh)	170.85	130.33	79.55	85.43	71.73	109.63	146.77
Max.MCP (€/MWh)	277.60	248.45	147.51	165.16	150.37	276.03	274.88
Min.MCP (€/MWh)	70.04	37.98	-6.58	-8.89	-6.23	3.00	30.33
	↗ 7%	↘ -2%	↘ -50%	↗ 16%	↘ -1%	↗ 127%	↘ -30%
Tot.Vol(GWh)	2.74	2.69	1.33	1.54	1.53	3.47	2.43

Trades by Order Type

Delivery Day		24.06	25.06	26.06	27.06	28.06	29.06	30.06	
Ord Price Type		Sell & Buy Trades in (GWh) per Price Type							(%)
PPT	(S)	0.000	0.000	0.000	0.000	0.000	0.000	0.000	0.00%
HBD	(S)	0.769	1.084	0.492	0.743	0.493	1.725	1.059	87.08%
BLK	(S)	0.000	0.000	0.000	0.000	0.000	0.000	0.000	0.00%
CPL	(S)	0.602	0.260	0.175	0.029	0.270	0.009	0.157	12.92%
PPT	(B)	0.000	0.000	0.000	0.000	0.000	0.000	0.000	0.00%
HBD	(B)	1.362	0.928	0.463	0.551	0.715	0.971	1.167	95.95%
BLK	(B)	0.000	0.000	0.000	0.000	0.000	0.000	0.000	0.00%
CPL	(B)	0.009	0.416	0.204	0.221	0.048	0.763	0.049	4.05%
		Sell & Buy Orders Traded per Price Type							(%)
PPT	(S)	0	0	0	0	0	0	0	0.00%
HBD	(S)	225	273	144	199	132	195	148	100.00%
BLK	(S)	0	0	0	0	0	0	0	0.00%
PPT	(B)	0	0	0	0	0	0	0	0.00%
HBD	(B)	89	241	206	149	172	202	337	100.00%
BLK	(B)	0	0	0	0	0	0	0	0.00%

- MCP** Market Clearing Price (€/MWh)
- PPT** Priority Price-Taking
- HBD** Hybrid
- BLK** Block
- CPL** Market Coupling Flow

Trade's Volume Mix

		Sell - MWh		Buy - MWh	
Lignite	(0.0%)	0	0	0	(0.0%)
Crete Conv.	(0.0%)	0	0	0	(0.0%)
Gas	(0.5%)	6	306		(25.2%)
Hydro	(0.4%)	5	0		(0.0%)
Imports	(12.9%)	157			
RES	(54.2%)	659	510		(42.0%)
Crete RES	(0.0%)	0	0		(0.0%)
BESS	(0.0%)	0	18		(1.5%)
HV Load	(0.3%)	3	0		(0.0%)
MV Load	(22.6%)	274	34		(2.8%)
LV Load	(9.1%)	111	299		(24.6%)
Crete Load	(0.0%)	0	0		(0.0%)
Pumping	(0.0%)	0	0		(0.0%)
Exports				49	(4.0%)
Sys.Losses	(0.0%)	0	0		(0.0%)
D/R Load	(0.0%)	0	0		(0.0%)

