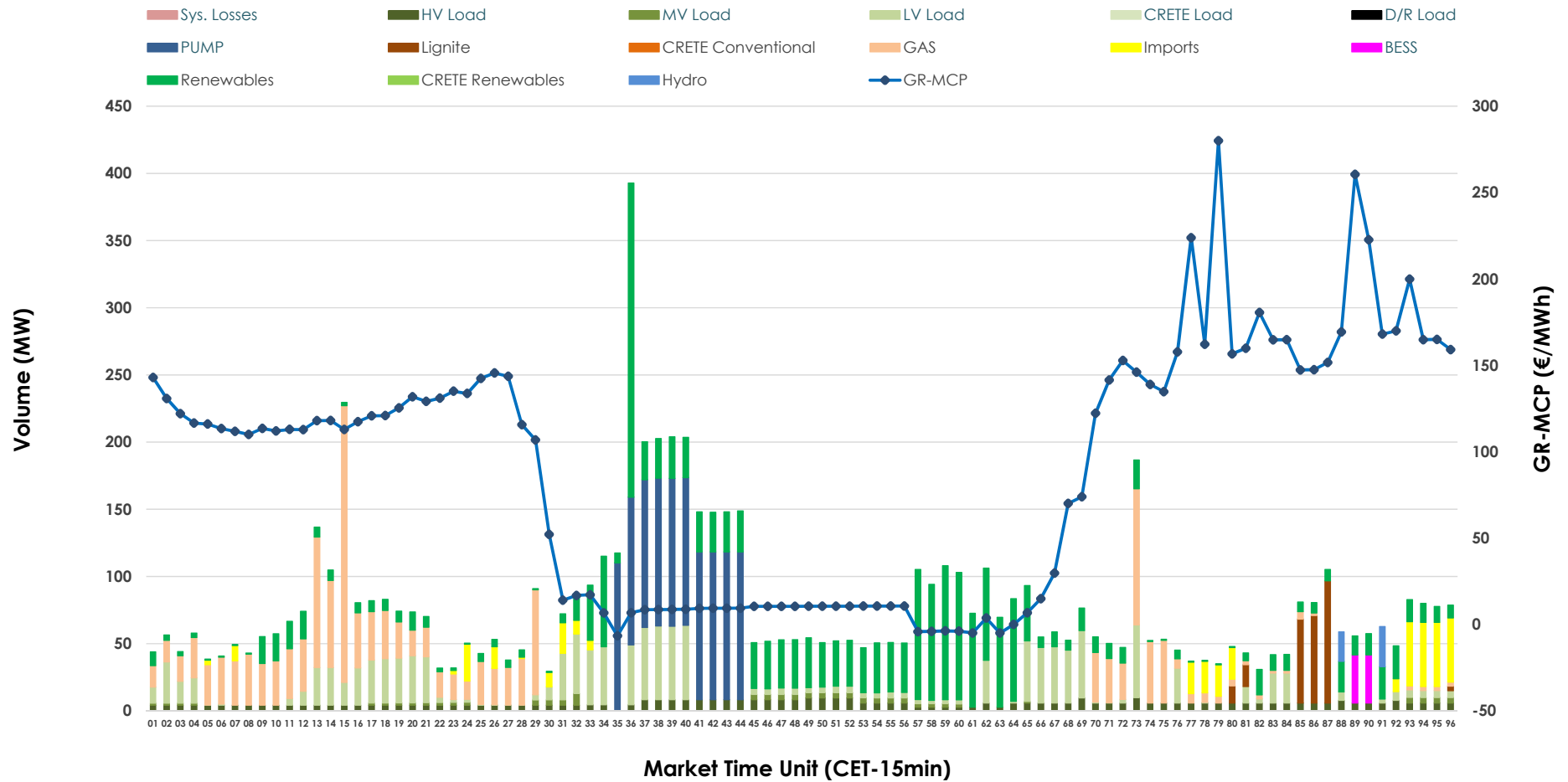


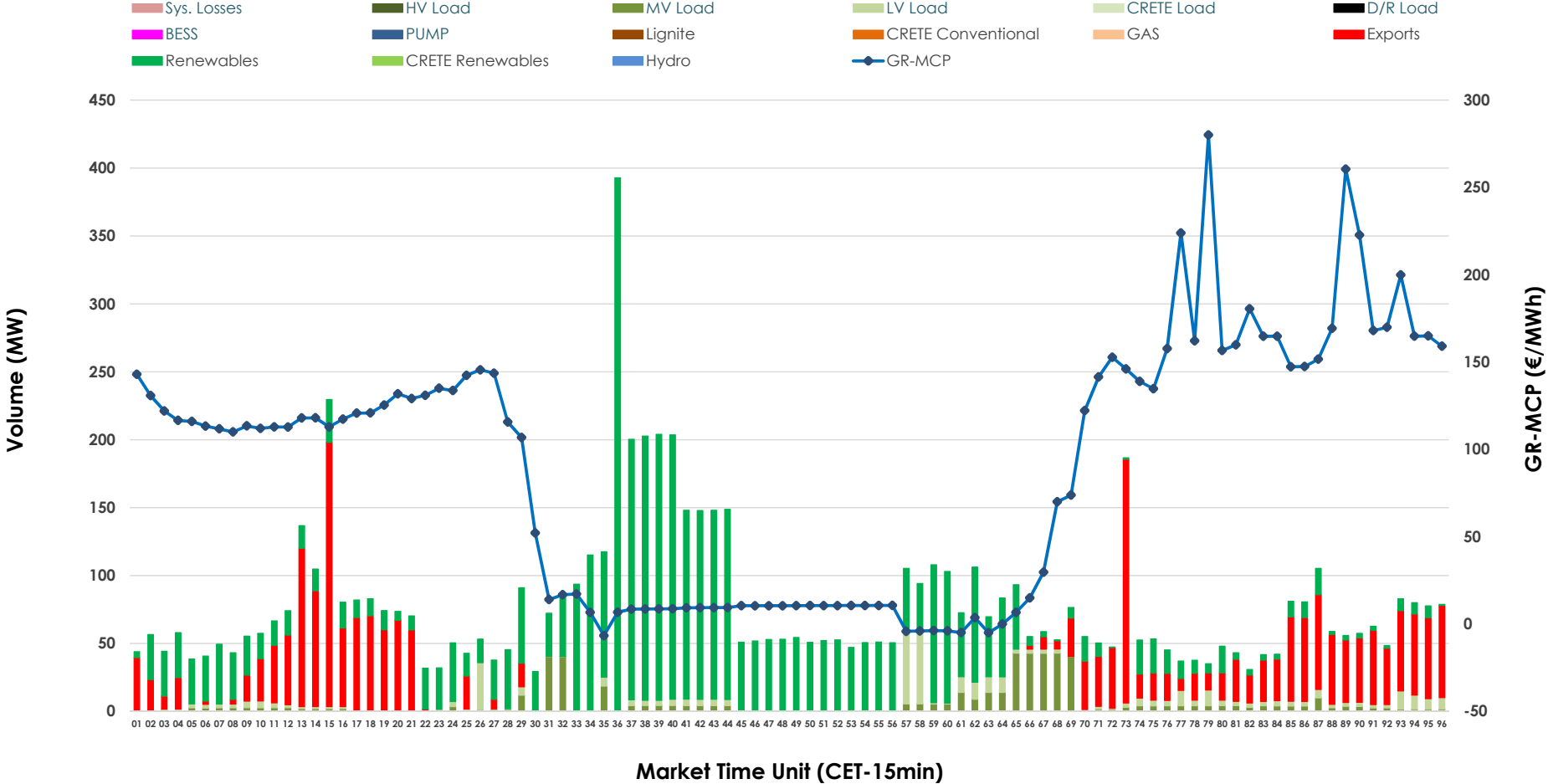


IDA '1' Market Outlook

29.06.2026 IDA '1' Market - Sell



29.06.2026 IDA '1' Market - Buy



GR Bidding Zone Weekly Figures

Delivery Day	23.06	24.06	25.06	26.06	27.06	28.06	29.06
	↑ 48%	↔ 13%	↓ -17%	↓ -28%	↓ -8%	↓ -8%	↔ 25%
Avg.MCP (€/MWh)	126.48	143.37	118.51	85.06	77.88	72.03	90.14
Max.MCP (€/MWh)	323.02	306.07	253.14	179.07	169.60	153.50	280.03
Min.MCP (€/MWh)	0.00	31.23	12.83	-10.01	-5.79	-3.92	-6.62
	↓ -25%	↔ 20%	↑ 35%	↔ 1%	↓ -58%	↑ 106%	↓ -27%
Tot.Vol(GWh)	3.71	4.44	6.00	6.04	2.55	5.24	3.81

Trades by Order Type

Delivery Day		23.06	24.06	25.06	26.06	27.06	28.06	29.06	
Ord Price Type		Sell & Buy Trades in (GWh) per Price Type							(%)
PPT	(S)	0.000	0.000	0.000	0.000	0.000	0.000	0.000	0.00%
HBD	(S)	1.047	1.684	2.810	2.829	1.036	1.770	1.804	94.65%
BLK	(S)	0.000	0.000	0.000	0.000	0.000	0.000	0.000	0.00%
CPL	(S)	0.808	0.537	0.190	0.189	0.238	0.850	0.102	5.35%
PPT	(B)	0.000	0.000	0.000	0.000	0.000	0.000	0.000	0.00%
HBD	(B)	1.040	1.302	1.442	1.613	1.053	1.728	1.323	69.44%
BLK	(B)	0.000	0.000	0.000	0.000	0.000	0.000	0.000	0.00%
CPL	(B)	0.815	0.919	1.558	1.405	0.222	0.892	0.582	30.56%
		Sell & Buy Orders Traded per Price Type							(%)
PPT	(S)	0	0	0	0	0	0	0	0.00%
HBD	(S)	322	307	444	590	332	382	538	100.00%
BLK	(S)	0	0	0	0	0	0	0	0.00%
PPT	(B)	0	0	0	0	0	0	0	0.00%
HBD	(B)	550	654	589	478	502	522	479	100.00%
BLK	(B)	0	0	0	0	0	0	0	0.00%

- MCP** Market Clearing Price (€/MWh)
- PPT** Priority Price-Taking
- HBD** Hybrid
- BLK** Block
- CPL** Market Coupling Flow

Trade's Volume Mix

	Sell - MWh	Buy - MWh	
Lignite (3.3%)	63	0	(0.0%)
Crete Conv. (0.0%)	0	0	(0.0%)
Gas (19.8%)	377	0	(0.0%)
Hydro (0.7%)	13	0	(0.0%)
Imports (5.3%)	102		
RES (29.9%)	569	1,074	(56.4%)
Crete RES (0.0%)	0	0	(0.0%)
BESS (0.9%)	18	0	(0.0%)
HV Load (7.0%)	133	0	(0.0%)
MV Load (1.5%)	29	142	(7.5%)
LV Load (17.1%)	327	107	(5.6%)
Crete Load (0.0%)	0	0	(0.0%)
Pumping (14.4%)	275	0	(0.0%)
Exports		582	(30.6%)
Sys.Losses (0.0%)	0	0	(0.0%)
D/R Load (0.0%)	0	0	(0.0%)

