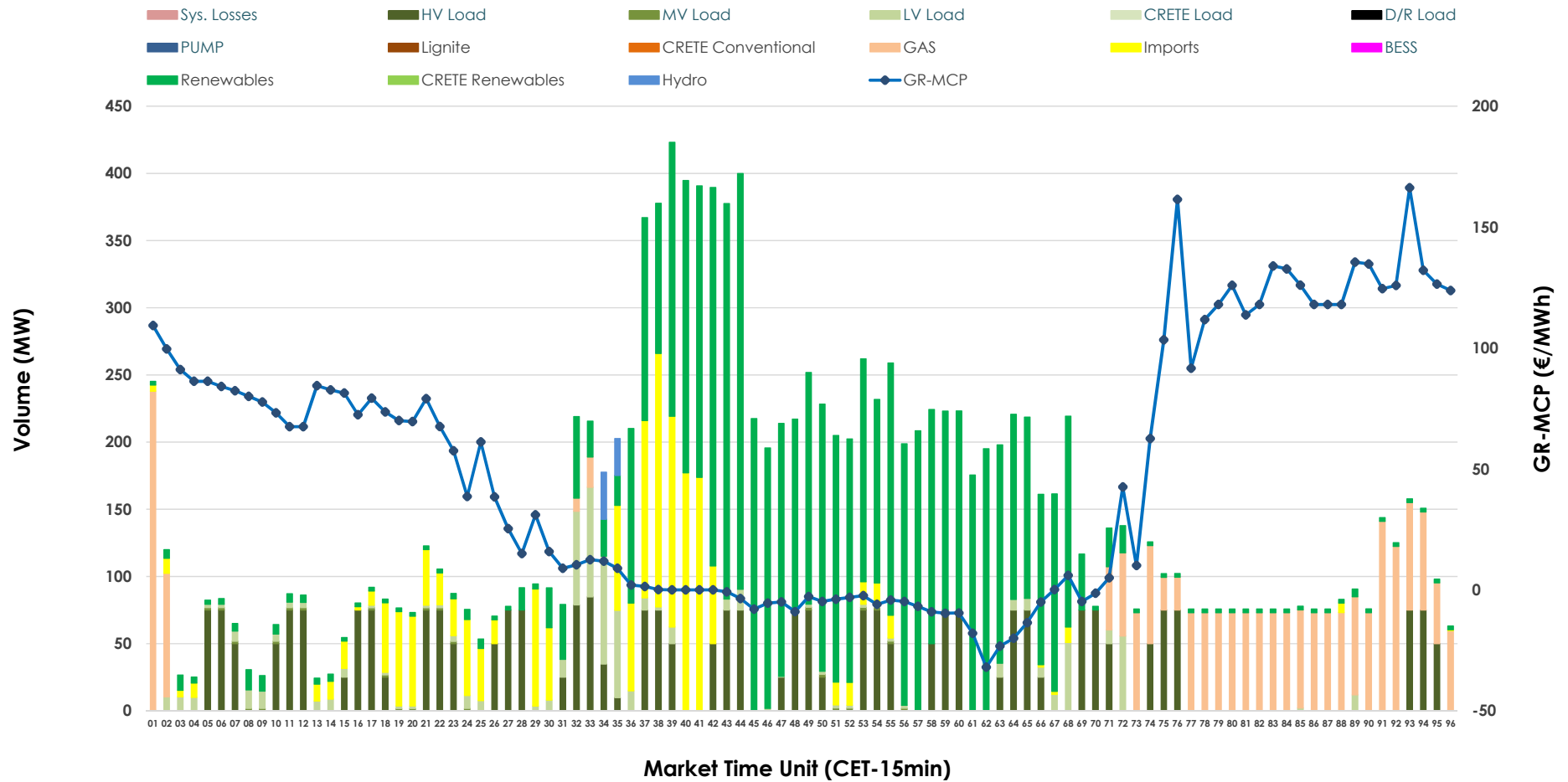


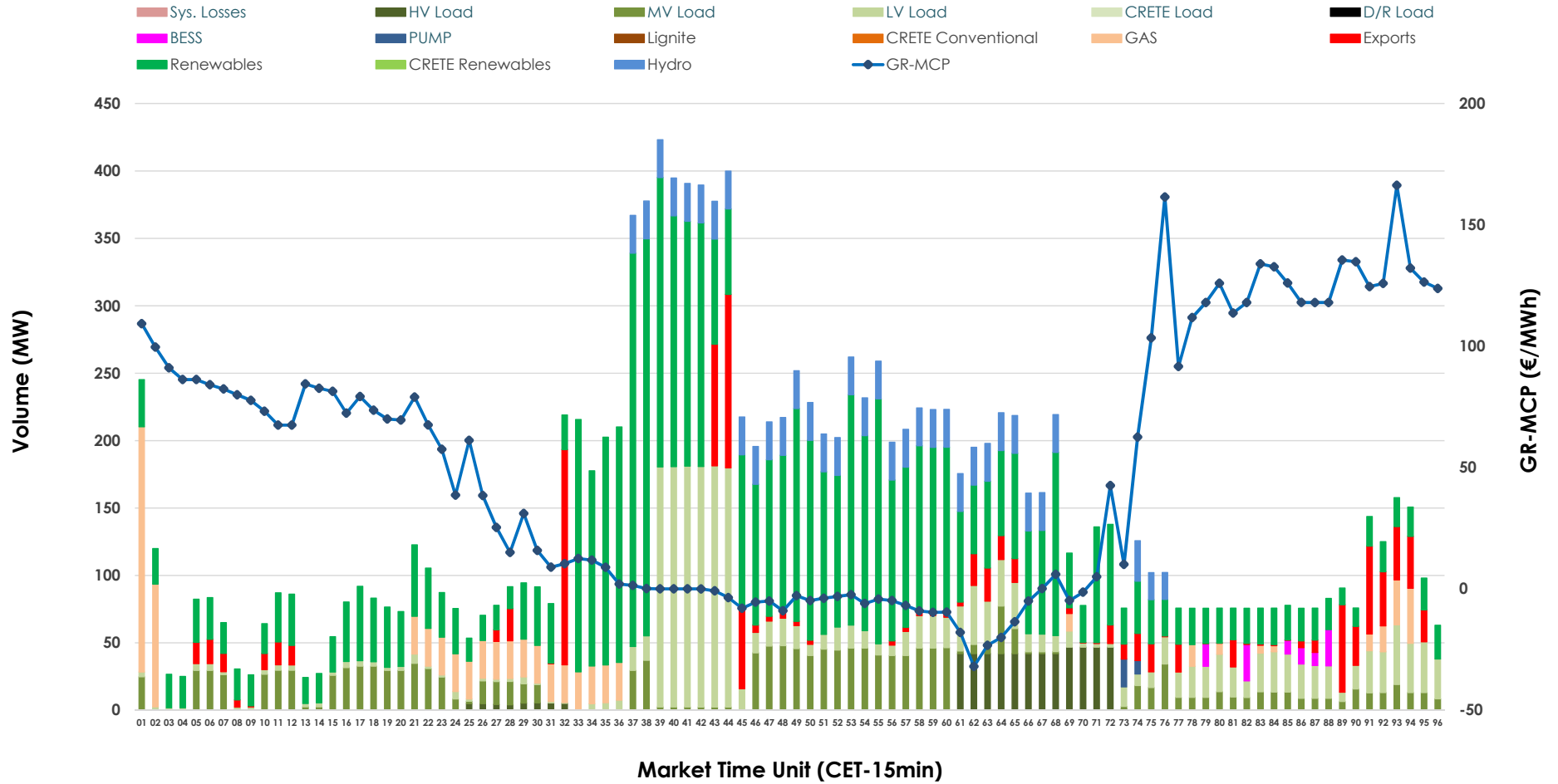


IDA '1' Market Outlook

13.06.2026 IDA '1' Market - Sell



13.06.2026 IDA '1' Market - Buy



GR Bidding Zone Weekly Figures

Delivery Day	07.06	08.06	09.06	10.06	11.06	12.06	13.06
	👇 -31%	👆 74%	👉 18%	👇 -9%	👇 -4%	👉 16%	👇 -57%
Avg.MCP (€/MWh)	55.54	96.43	113.63	103.97	99.61	115.33	49.72
Max.MCP (€/MWh)	142.61	199.66	216.03	199.87	171.71	176.30	166.27
Min.MCP (€/MWh)	-14.00	1.00	-4.76	-7.15	14.37	68.99	-31.98
	👉 30%	👉 7%	👇 -34%	👉 7%	👇 -7%	👉 2%	👆 56%
Tot.Vol(GWh)	6.42	6.87	4.54	4.85	4.51	4.60	7.18

Trades by Order Type

Delivery Day		07.06	08.06	09.06	10.06	11.06	12.06	13.06	
Ord Price Type		Sell & Buy Trades in (GWh) per Price Type							(%)
PPT	(S)	0.000	0.000	0.000	0.000	0.000	0.000	0.000	0.00%
HBD	(S)	1.634	3.130	1.484	1.778	1.639	1.731	3.148	87.72%
BLK	(S)	0.000	0.000	0.000	0.000	0.000	0.000	0.000	0.00%
CPL	(S)	1.574	0.307	0.785	0.647	0.617	0.571	0.441	12.28%
PPT	(B)	0.000	0.000	0.000	0.000	0.000	0.000	0.000	0.00%
HBD	(B)	3.074	1.796	1.388	0.828	1.062	1.814	3.308	92.18%
BLK	(B)	0.000	0.000	0.000	0.000	0.000	0.000	0.000	0.00%
CPL	(B)	0.134	1.641	0.881	1.597	1.194	0.488	0.281	7.82%
		Sell & Buy Orders Traded per Price Type							(%)
PPT	(S)	0	0	0	0	0	0	0	0.00%
HBD	(S)	202	369	211	376	209	411	335	100.00%
BLK	(S)	0	0	0	0	0	0	0	0.00%
PPT	(B)	0	0	0	0	0	0	0	0.00%
HBD	(B)	731	1013	820	549	639	749	739	100.00%
BLK	(B)	0	0	0	0	0	0	0	0.00%

- MCP** Market Clearing Price (€/MWh)
- PPT** Priority Price-Taking
- HBD** Hybrid
- BLK** Block
- CPL** Market Coupling Flow

Trade's Volume Mix

	Sell - MWh	Buy - MWh	
Lignite (0.0%)	0	0	(0.0%)
Crete Conv. (0.0%)	0	0	(0.0%)
Gas (15.4%)	552	219	(6.1%)
Hydro (0.4%)	16	241	(6.7%)
Imports (12.3%)	441		
RES (45.4%)	1,630	1,679	(46.8%)
Crete RES (0.0%)	0	0	(0.0%)
BESS (0.0%)	0	26	(0.7%)
HV Load (21.1%)	758	141	(3.9%)
MV Load (0.3%)	11	422	(11.8%)
LV Load (5.0%)	180	572	(15.9%)
Crete Load (0.0%)	0	0	(0.0%)
Pumping (0.0%)	0	8	(0.2%)
Exports		281	(7.8%)
Sys.Losses (0.0%)	0	0	(0.0%)
D/R Load (0.0%)	0	0	(0.0%)

