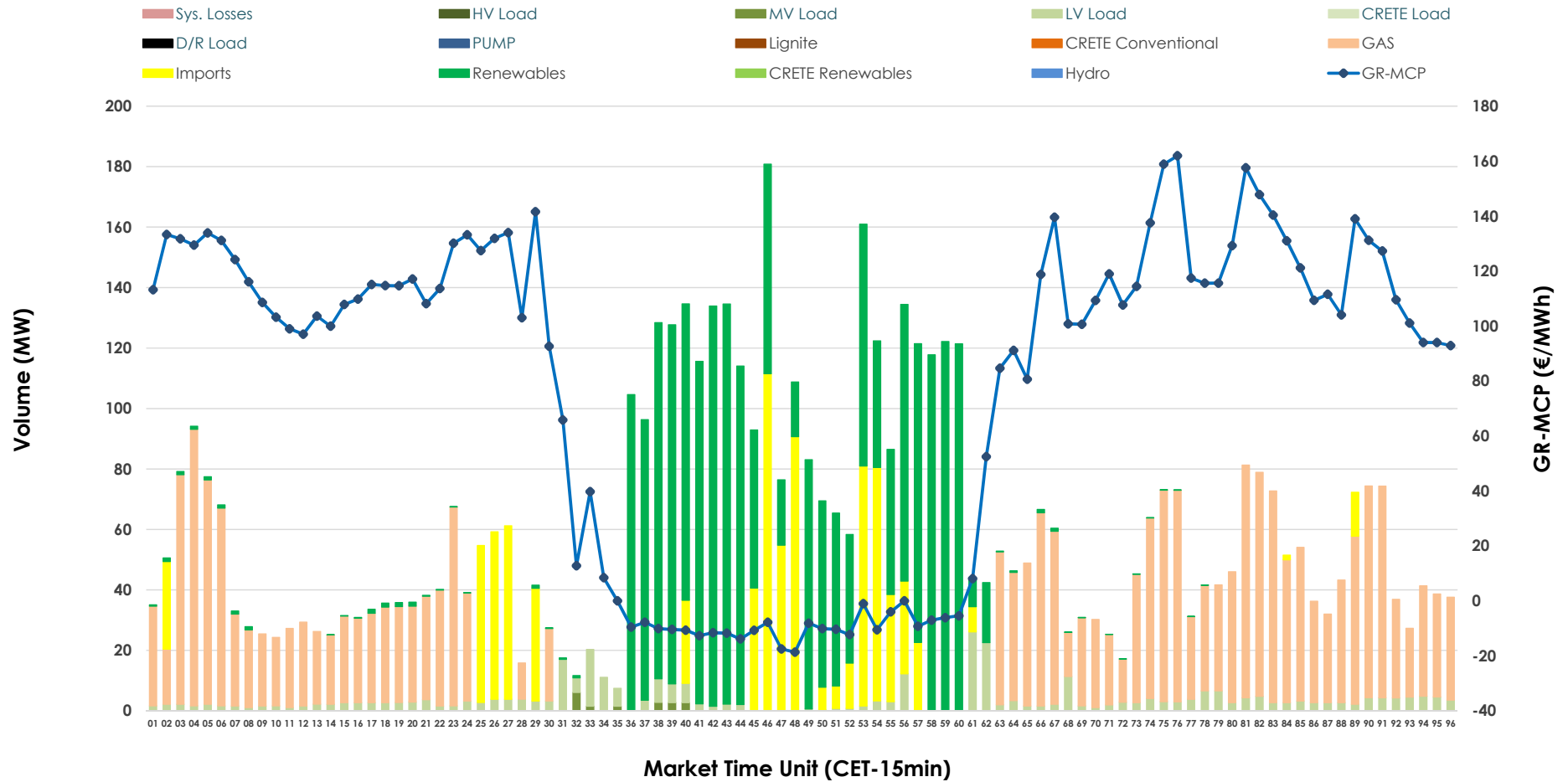


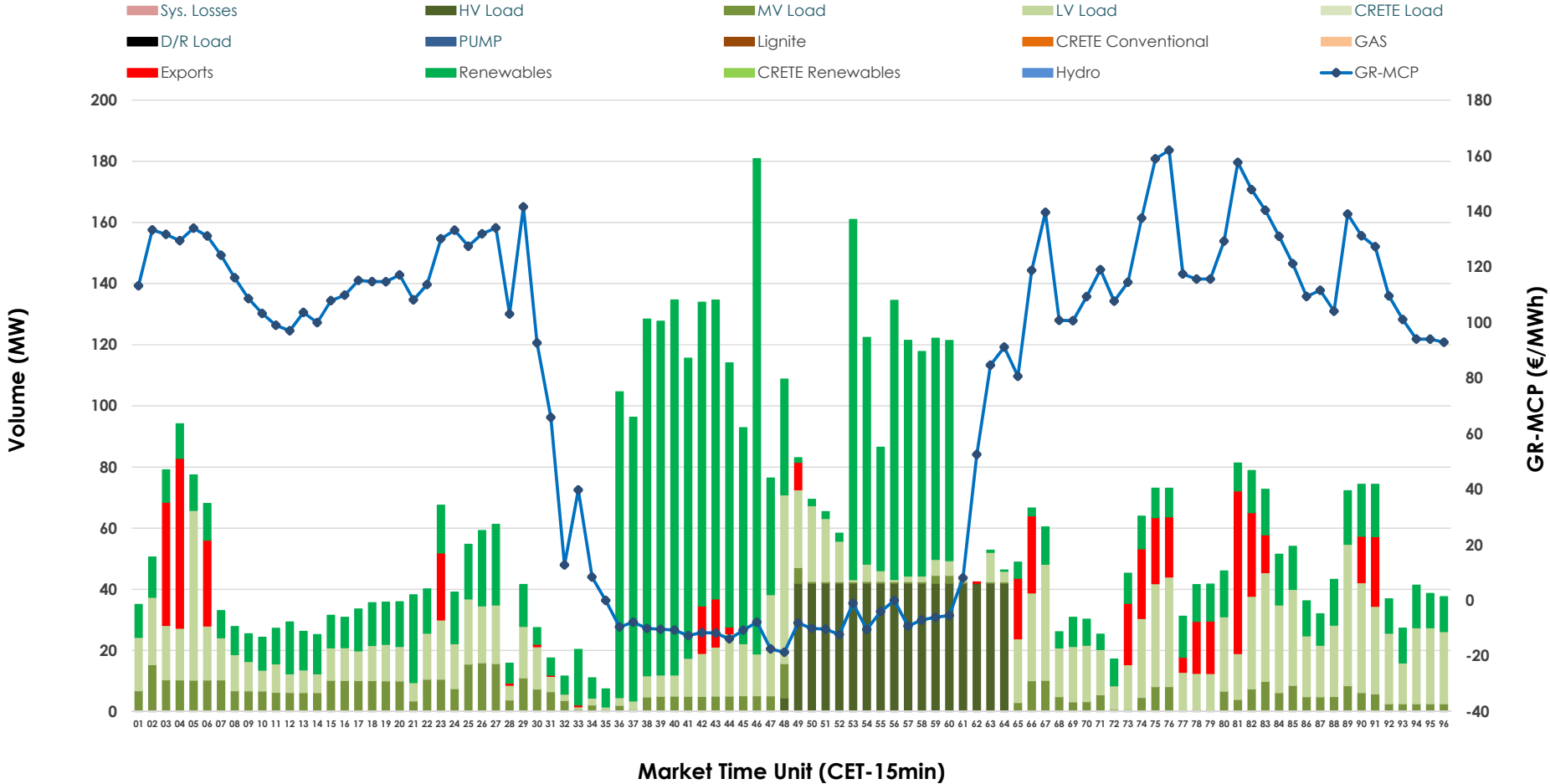


# IDA '1' Market Outlook

07.03.2026 IDA '1' Market - Sell



### 07.03.2026 IDA '1' Market - Buy



### GR Bidding Zone Weekly Figures

Delivery Day	01.03	02.03	03.03	04.03	05.03	06.03	07.03
	👇 -22%	👆 108%	👆 35%	👇 -5%	👆 3%	👇 -19%	👇 -4%
<b>Avg.MCP (€/MWh)</b>	36.70	76.51	103.29	97.63	100.31	81.18	77.97
<b>Max.MCP (€/MWh)</b>	113.24	212.21	227.86	261.83	212.70	211.99	161.96
<b>Min.MCP (€/MWh)</b>	-10.14	-15.94	10.59	-3.04	0.79	-20.04	-18.65
	👇 -8%	👆 8%	👆 16%	👆 267%	👇 -78%	👆 115%	👇 -53%
<b>Tot.Vol(GWh)</b>	2.90	3.13	3.63	13.31	2.92	6.29	2.95

### Trades by Order Type

Delivery Day		01.03	02.03	03.03	04.03	05.03	06.03	07.03	
<b>Ord Price Type</b>		Sell & Buy Trades in (GWh) per Price Type							(%)
<b>PPT</b>	(S)	0.000	0.000	0.000	0.000	0.000	0.000	0.000	0.00%
<b>HBD</b>	(S)	1.371	1.093	1.462	6.633	0.881	2.666	1.263	85.52%
<b>BLK</b>	(S)	0.000	0.000	0.000	0.000	0.000	0.000	0.000	0.00%
<b>CPL</b>	(S)	0.078	0.474	0.351	0.023	0.580	0.481	0.214	14.48%
<b>PPT</b>	(B)	0.000	0.000	0.000	0.000	0.000	0.000	0.000	0.00%
<b>HBD</b>	(B)	1.031	1.121	1.333	6.102	1.383	2.469	1.355	91.70%
<b>BLK</b>	(B)	0.000	0.000	0.000	0.000	0.000	0.000	0.000	0.00%
<b>CPL</b>	(B)	0.418	0.446	0.480	0.555	0.078	0.678	0.123	8.30%
		Sell & Buy Orders Traded per Price Type							(%)
<b>PPT</b>	(S)	0	0	0	0	0	0	0	0.00%
<b>HBD</b>	(S)	151	151	335	330	239	326	220	100.00%
<b>BLK</b>	(S)	0	0	0	0	0	0	0	0.00%
<b>PPT</b>	(B)	0	0	0	0	0	0	0	0.00%
<b>HBD</b>	(B)	645	794	806	854	929	682	771	100.00%
<b>BLK</b>	(B)	0	0	0	0	0	0	0	0.00%

**MCP** Market Clearing Price (€/MWh)  
**PPT** Priority Price-Taking  
**HBD** Hybrid  
**BLK** Block  
**CPL** Market Coupling Flow

### Trade's Volume Mix

		Sell - MWh	Buy - MWh	
<b>Lignite</b>	(0.0%)	0	0	(0.0%)
<b>Crete Conv.</b>	(0.0%)	0	0	(0.0%)
<b>Gas</b>	(42.1%)	622	0	(0.0%)
<b>Hydro</b>	(0.0%)	0	0	(0.0%)
<b>Imports</b>	(14.5%)	214		
<b>RES</b>	(37.2%)	549	670	(45.4%)
<b>Crete RES</b>	(0.0%)	0	0	(0.0%)
<b>HV Load</b>	(0.0%)	0	169	(11.4%)
<b>MV Load</b>	(0.3%)	4	133	(9.0%)
<b>LV Load</b>	(6.0%)	88	383	(25.9%)
<b>Crete Load</b>	(0.0%)	0	0	(0.0%)
<b>Pumping</b>	(0.0%)	0	0	(0.0%)
<b>Exports</b>			123	(8.3%)
<b>Sys.Losses</b>	(0.0%)	0	0	(0.0%)
<b>D/R Load</b>	(0.0%)	0	0	(0.0%)

