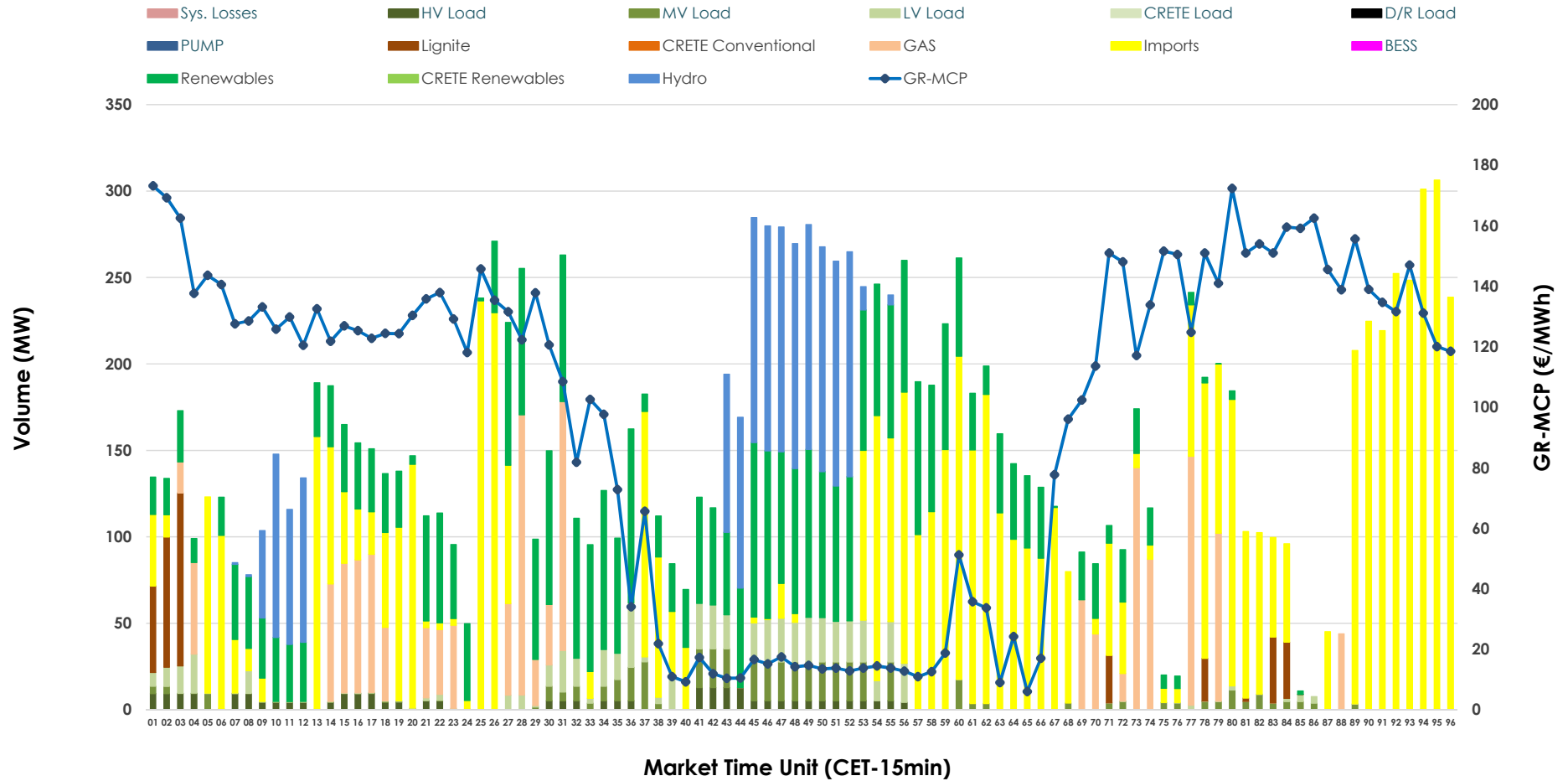


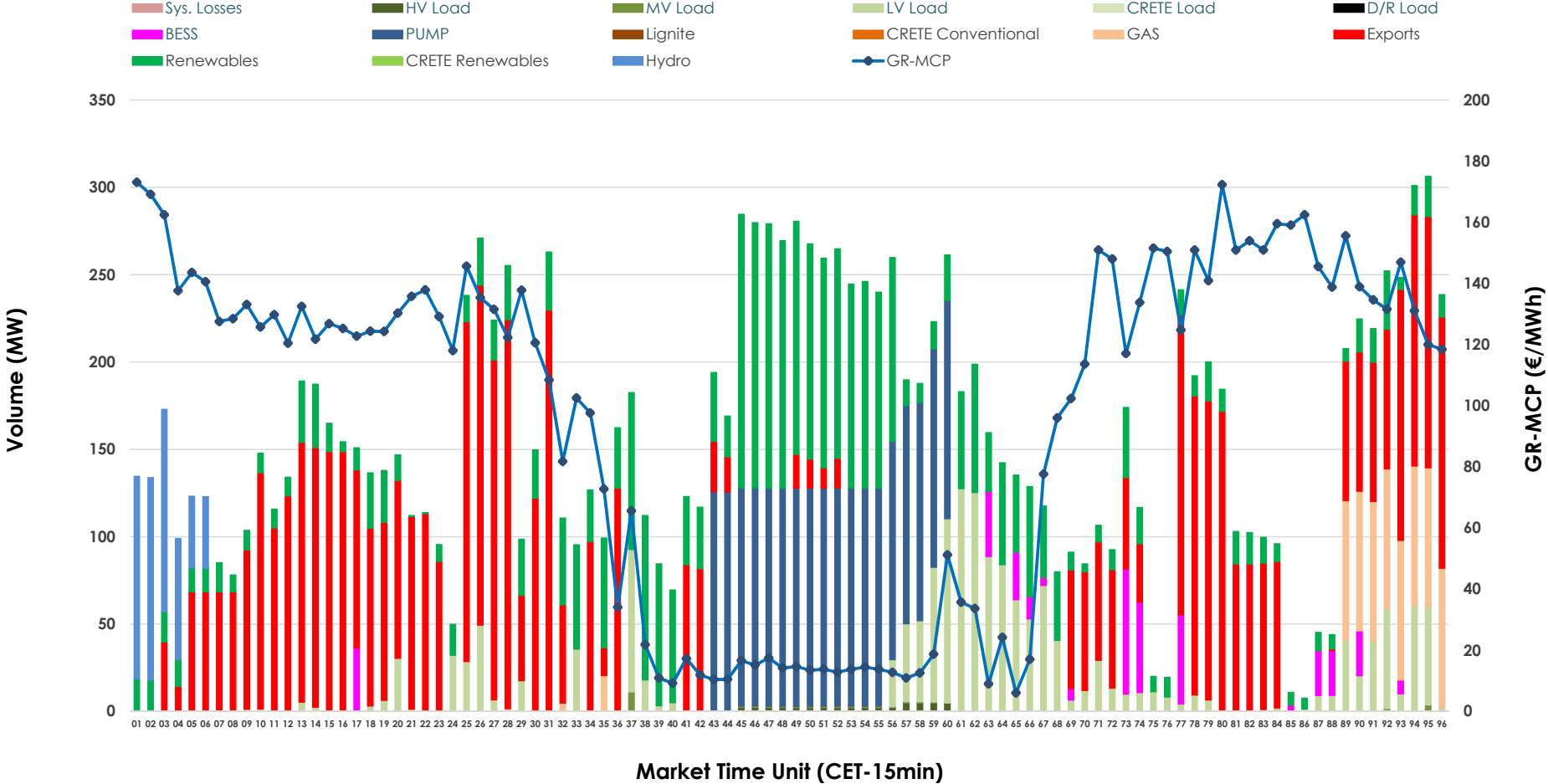


IDA '2' Market Outlook

03.07.2026 IDA '2' Market - Sell



03.07.2026 IDA '2' Market - Buy



GR Bidding Zone Weekly Figures

Delivery Day	27.06	28.06	29.06	30.06	01.07	02.07	03.07
	➔ 1%	👇 -22%	👆 50%	👆 37%	👆 20%	👇 -17%	👇 -31%
Avg.MCP (€/MWh)	87.62	68.04	101.76	139.08	167.17	139.09	95.72
Max.MCP (€/MWh)	198.96	147.37	280.03	509.29	434.88	305.21	173.13
Min.MCP (€/MWh)	-9.13	-11.32	-0.38	-9.83	72.11	28.63	6.01
	👆 87%	👇 -28%	👇 -15%	👆 6%	👆 26%	➔ 0%	👆 78%
Tot.Vol(GWh)	5.28	3.83	3.24	3.44	4.35	4.33	7.72

Trades by Order Type

Delivery Day		27.06	28.06	29.06	30.06	01.07	02.07	03.07	
Ord Price Type		Sell & Buy Trades in (GWh) per Price Type							(%)
PPT	(S)	0.000	0.000	0.000	0.000	0.000	0.000	0.000	0.00%
HBD	(S)	2.496	0.917	1.523	1.318	1.207	1.220	2.152	55.73%
BLK	(S)	0.000	0.000	0.000	0.000	0.000	0.000	0.000	0.00%
CPL	(S)	0.145	0.996	0.095	0.404	0.966	0.946	1.710	44.27%
PPT	(B)	0.000	0.000	0.000	0.000	0.000	0.000	0.000	0.00%
HBD	(B)	1.304	1.685	0.757	1.236	1.788	1.888	2.325	60.21%
BLK	(B)	0.000	0.000	0.000	0.000	0.000	0.000	0.000	0.00%
CPL	(B)	1.337	0.228	0.861	0.486	0.385	0.278	1.537	39.79%
		Sell & Buy Orders Traded per Price Type							(%)
PPT	(S)	0	0	0	0	0	0	0	0.00%
HBD	(S)	470	249	424	315	309	223	466	100.00%
BLK	(S)	0	0	0	0	0	0	0	0.00%
PPT	(B)	0	0	0	0	0	0	0	0.00%
HBD	(B)	476	447	250	366	613	569	589	100.00%
BLK	(B)	0	0	0	0	0	0	0	0.00%

- MCP** Market Clearing Price (€/MWh)
- PPT** Priority Price-Taking
- HBD** Hybrid
- BLK** Block
- CPL** Market Coupling Flow

Trade's Volume Mix

	Sell - MWh	Buy - MWh	
Lignite (2.3%)	88	0	(0.0%)
Crete Conv. (0.0%)	0	0	(0.0%)
Gas (10.3%)	399	166	(4.3%)
Hydro (10.2%)	395	125	(3.2%)
Imports (44.3%)	1,710		
RES (23.8%)	920	925	(24.0%)
Crete RES (0.0%)	0	0	(0.0%)
BESS (0.0%)	0	97	(2.5%)
HV Load (1.7%)	67	11	(0.3%)
MV Load (3.3%)	128	9	(0.2%)
LV Load (4.0%)	155	430	(11.1%)
Crete Load (0.0%)	0	0	(0.0%)
Pumping (0.0%)	0	563	(14.6%)
Exports		1,537	(39.8%)
Sys.Losses (0.0%)	0	0	(0.0%)
D/R Load (0.0%)	0	0	(0.0%)

