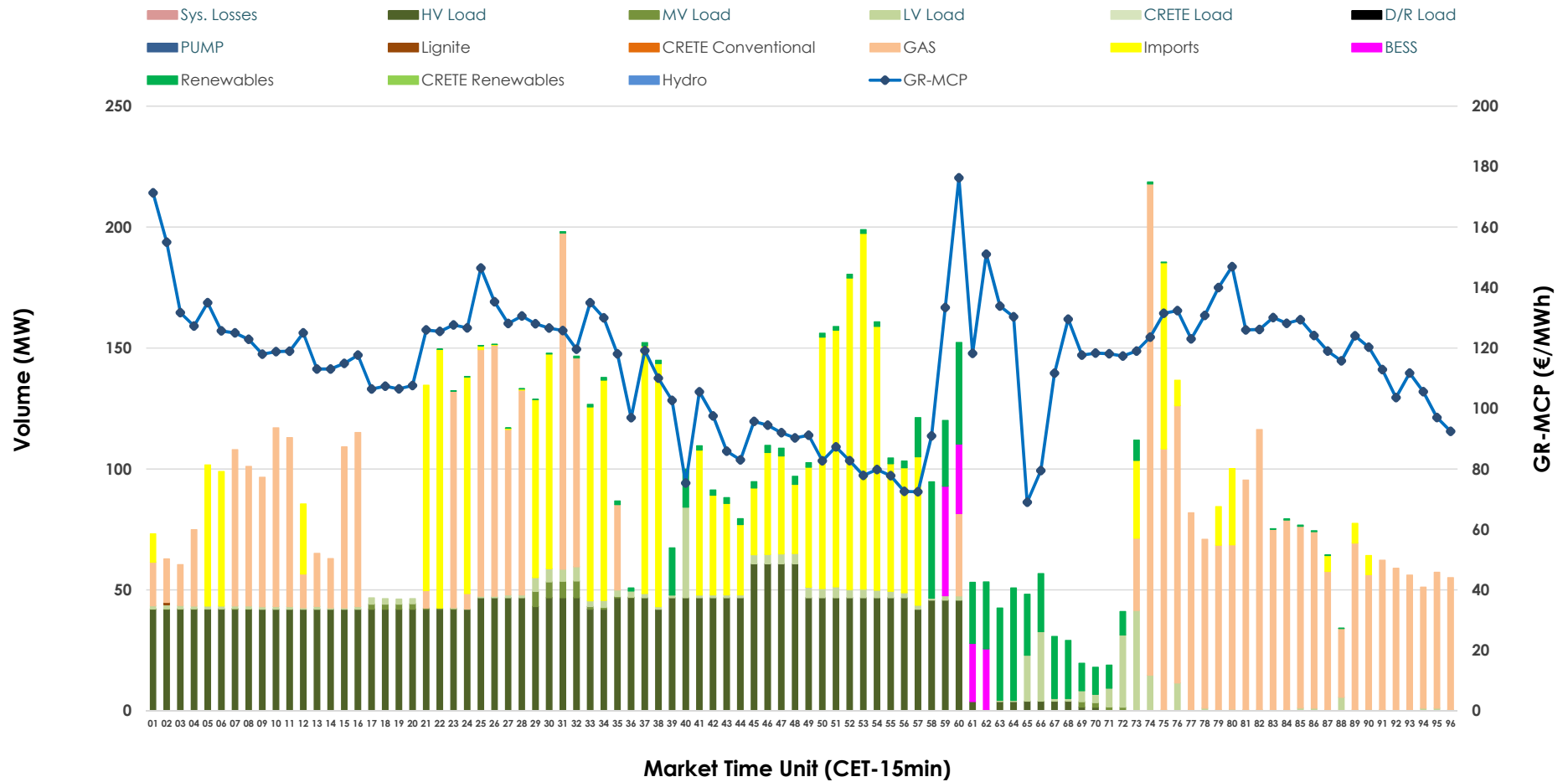


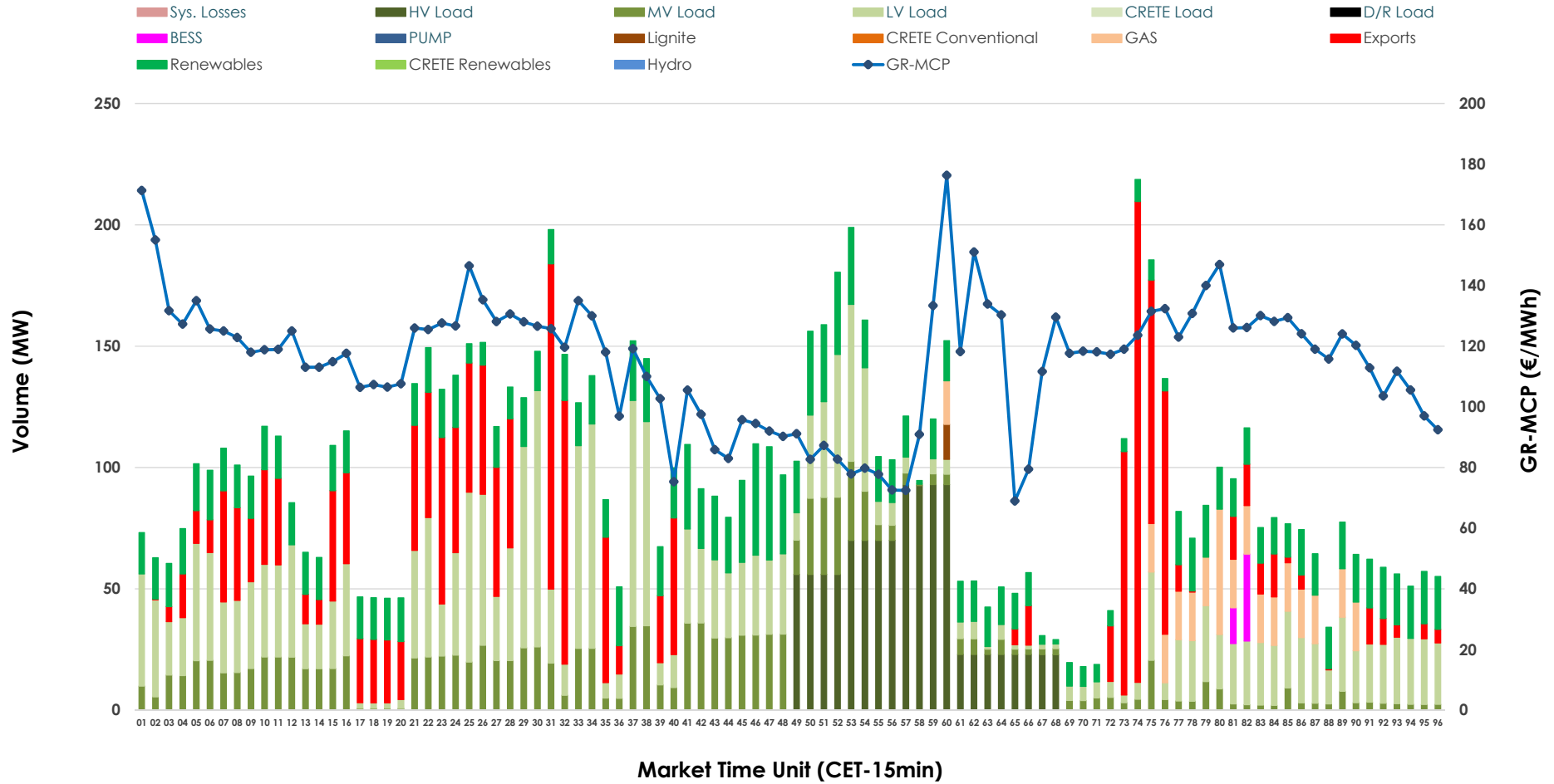


# IDA '1' Market Outlook

12.06.2026 IDA '1' Market - Sell



### 12.06.2026 IDA '1' Market - Buy



### GR Bidding Zone Weekly Figures

Delivery Day	06.06	07.06	08.06	09.06	10.06	11.06	12.06
	👇 -30%	👇 -31%	👆 74%	👆 18%	👇 -9%	👇 -4%	👆 16%
<b>Avg.MCP (€/MWh)</b>	80.04	55.54	96.43	113.63	103.97	99.61	115.33
<b>Max.MCP (€/MWh)</b>	156.50	142.61	199.66	216.03	199.87	171.71	176.30
<b>Min.MCP (€/MWh)</b>	-11.00	-14.00	1.00	-4.76	-7.15	14.37	68.99
	👆 15%	👆 30%	👆 7%	👇 -34%	👆 7%	👇 -7%	👆 2%
<b>Tot.Vol(GWh)</b>	4.93	6.42	6.87	4.54	4.85	4.51	4.60

### Trades by Order Type

Delivery Day		06.06	07.06	08.06	09.06	10.06	11.06	12.06	
<b>Ord Price Type</b>		<b>Sell &amp; Buy Trades in (GWh) per Price Type</b>							<b>(%)</b>
<b>PPT</b>	(S)	0.000	0.000	0.000	0.000	0.000	0.000	0.000	0.00%
<b>HBD</b>	(S)	2.180	1.634	3.130	1.484	1.778	1.639	1.731	75.21%
<b>BLK</b>	(S)	0.000	0.000	0.000	0.000	0.000	0.000	0.000	0.00%
<b>CPL</b>	(S)	0.286	1.574	0.307	0.785	0.647	0.617	0.571	24.79%
<b>PPT</b>	(B)	0.000	0.000	0.000	0.000	0.000	0.000	0.000	0.00%
<b>HBD</b>	(B)	1.325	3.074	1.796	1.388	0.828	1.062	1.814	78.82%
<b>BLK</b>	(B)	0.000	0.000	0.000	0.000	0.000	0.000	0.000	0.00%
<b>CPL</b>	(B)	1.142	0.134	1.641	0.881	1.597	1.194	0.488	21.18%
		<b>Sell &amp; Buy Orders Traded per Price Type</b>							<b>(%)</b>
<b>PPT</b>	(S)	0	0	0	0	0	0	0	0.00%
<b>HBD</b>	(S)	209	202	369	211	376	209	411	100.00%
<b>BLK</b>	(S)	0	0	0	0	0	0	0	0.00%
<b>PPT</b>	(B)	0	0	0	0	0	0	0	0.00%
<b>HBD</b>	(B)	797	731	1013	820	549	639	749	100.00%
<b>BLK</b>	(B)	0	0	0	0	0	0	0	0.00%

- MCP** Market Clearing Price (€/MWh)
- PPT** Priority Price-Taking
- HBD** Hybrid
- BLK** Block
- CPL** Market Coupling Flow

### Trade's Volume Mix

		Sell - MWh	Buy - MWh	
<b>Lignite</b>	(0.0%)	0	4	(0.2%)
<b>Crete Conv.</b>	(0.0%)	0	0	(0.0%)
<b>Gas</b>	(34.3%)	789	87	(3.8%)
<b>Hydro</b>	(0.0%)	0	0	(0.0%)
<b>Imports</b>	(24.8%)	571		
<b>RES</b>	(5.4%)	125	444	(19.3%)
<b>Crete RES</b>	(0.0%)	0	0	(0.0%)
<b>BESS</b>	(1.3%)	31	13	(0.5%)
<b>HV Load</b>	(29.9%)	688	265	(11.5%)
<b>MV Load</b>	(0.5%)	12	322	(14.0%)
<b>LV Load</b>	(3.7%)	85	680	(29.5%)
<b>Crete Load</b>	(0.0%)	0	0	(0.0%)
<b>Pumping</b>	(0.0%)	0	0	(0.0%)
<b>Exports</b>			488	(21.2%)
<b>Sys.Losses</b>	(0.0%)	0	0	(0.0%)
<b>D/R Load</b>	(0.0%)	0	0	(0.0%)

