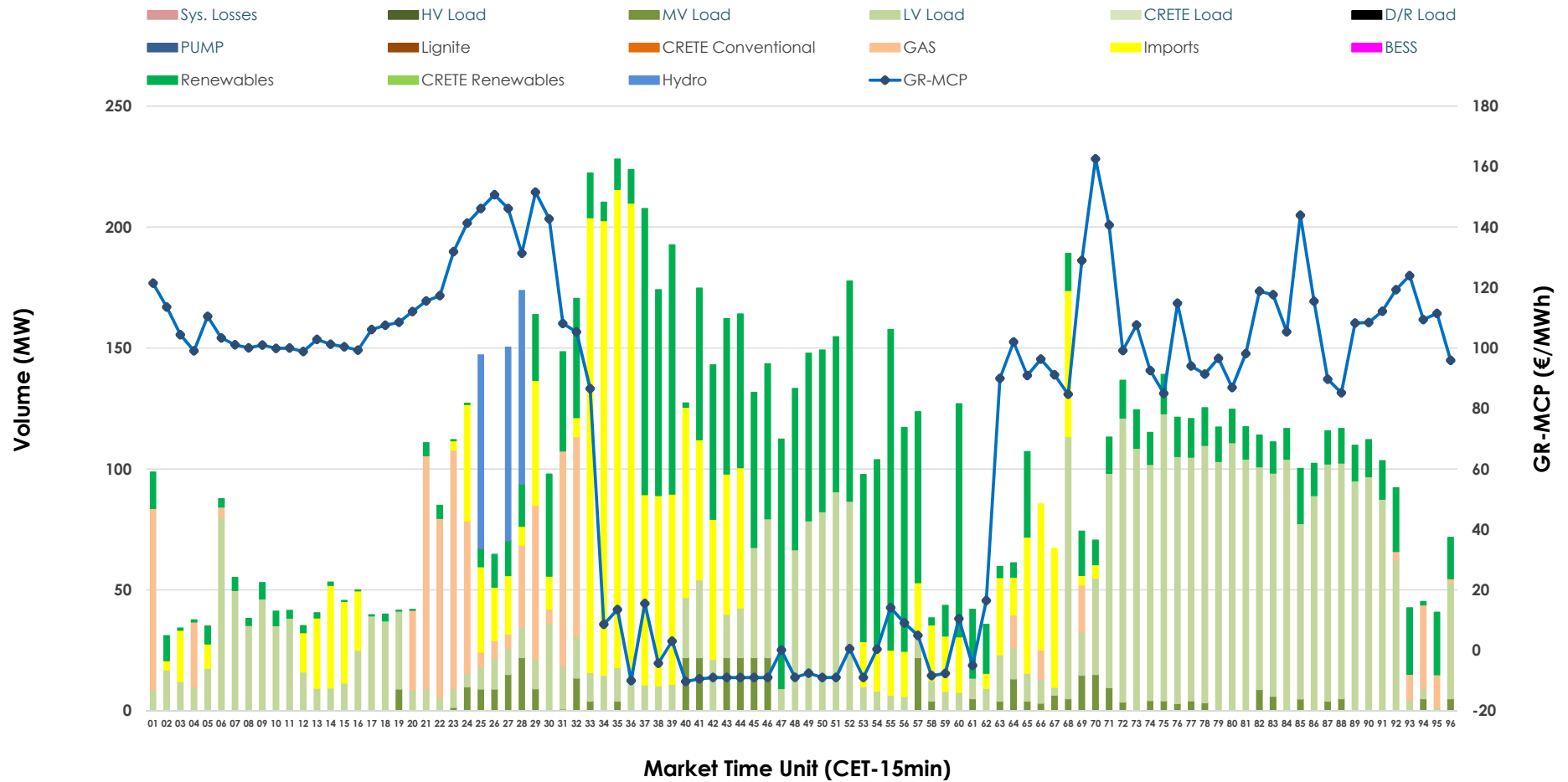


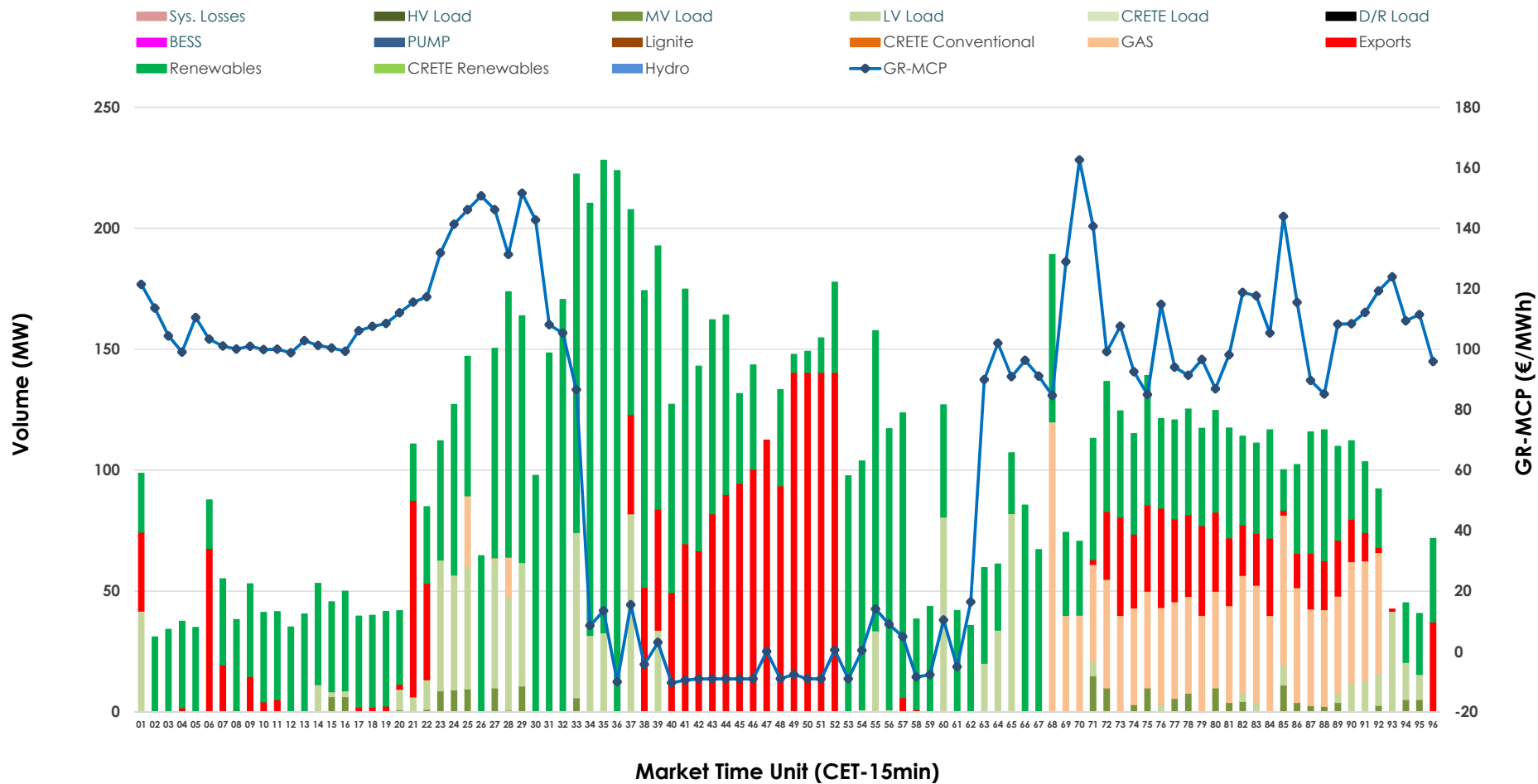


IDA '2' Market Outlook

26.03.2026 IDA '2' Market - Sell



26.03.2026 IDA '2' Market - Buy



GR Bidding Zone Weekly Figures

Delivery Day	20.03	21.03	22.03	23.03	24.03	25.03	26.03
	↗ 18%	↘ -14%	↘ -10%	↗ 70%	↘ -27%	↘ -23%	↘ -9%
Avg.MCP (€/MWh)	111.38	95.69	86.52	147.38	108.28	83.72	76.43
Max.MCP (€/MWh)	245.73	170.48	195.14	281.69	211.00	205.42	162.57
Min.MCP (€/MWh)	33.00	-10.46	-10.00	78.10	13.54	-18.99	-10.32
	↗ 22%	↗ 2%	↗ 52%	↗ 1%	↘ -19%	↘ -38%	↗ 52%
Tot.Vol(GWh)	4.24	4.32	6.58	6.67	5.43	3.37	5.11

Trades by Order Type

Delivery Day		20.03	21.03	22.03	23.03	24.03	25.03	26.03	
Ord Price Type		Sell & Buy Trades in (GWh) per Price Type							(%)
PPT	(S)	0.000	0.000	0.000	0.000	0.000	0.000	0.000	0.00%
HBD	(S)	1.422	1.990	2.122	2.540	1.542	1.586	2.013	78.74%
BLK	(S)	0.000	0.000	0.000	0.000	0.000	0.000	0.000	0.00%
CPL	(S)	0.696	0.173	1.168	0.795	1.172	0.097	0.544	21.26%
PPT	(B)	0.000	0.000	0.000	0.000	0.000	0.000	0.000	0.00%
HBD	(B)	1.907	1.930	2.586	1.590	1.685	1.683	1.977	77.35%
BLK	(B)	0.000	0.000	0.000	0.000	0.000	0.000	0.000	0.00%
CPL	(B)	0.211	0.232	0.704	1.745	1.030	0.000	0.579	22.65%
		Sell & Buy Orders Traded per Price Type							(%)
PPT	(S)	0	0	0	0	0	0	0	0.00%
HBD	(S)	245	212	358	324	263	227	405	100.00%
BLK	(S)	0	0	0	0	0	0	0	0.00%
PPT	(B)	0	0	0	0	0	0	0	0.00%
HBD	(B)	473	670	483	392	583	354	374	100.00%
BLK	(B)	0	0	0	0	0	0	0	0.00%

- MCP** Market Clearing Price (€/MWh)
- PPT** Priority Price-Taking
- HBD** Hybrid
- BLK** Block
- CPL** Market Coupling Flow

Trade's Volume Mix

	Sell - MWh	Buy - MWh	
Lignite	0	0	(0.0%)
Crete Conv.	0	0	(0.0%)
Gas	219	302	(11.8%)
Hydro	60	0	(0.0%)
Imports	544		
RES	651	1,375	(53.8%)
Crete RES	0	0	(0.0%)
BESS	0	0	(0.0%)
HV Load	0	0	(0.0%)
MV Load	101	45	(1.7%)
LV Load	981	256	(10.0%)
Crete Load	0	0	(0.0%)
Pumping	0	0	(0.0%)
Exports		579	(22.6%)
Sys.Losses	0	0	(0.0%)
D/R Load	0	0	(0.0%)

