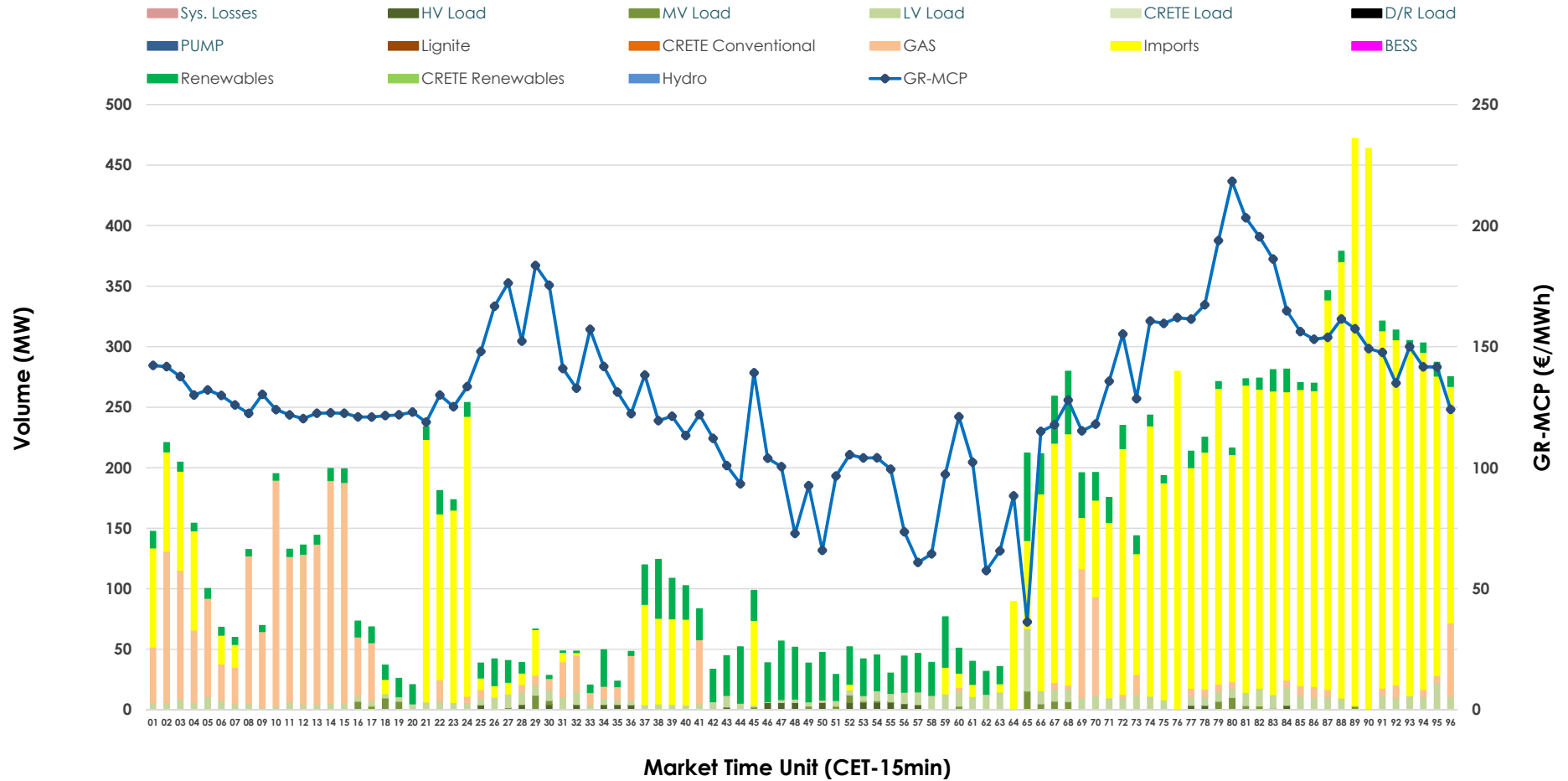


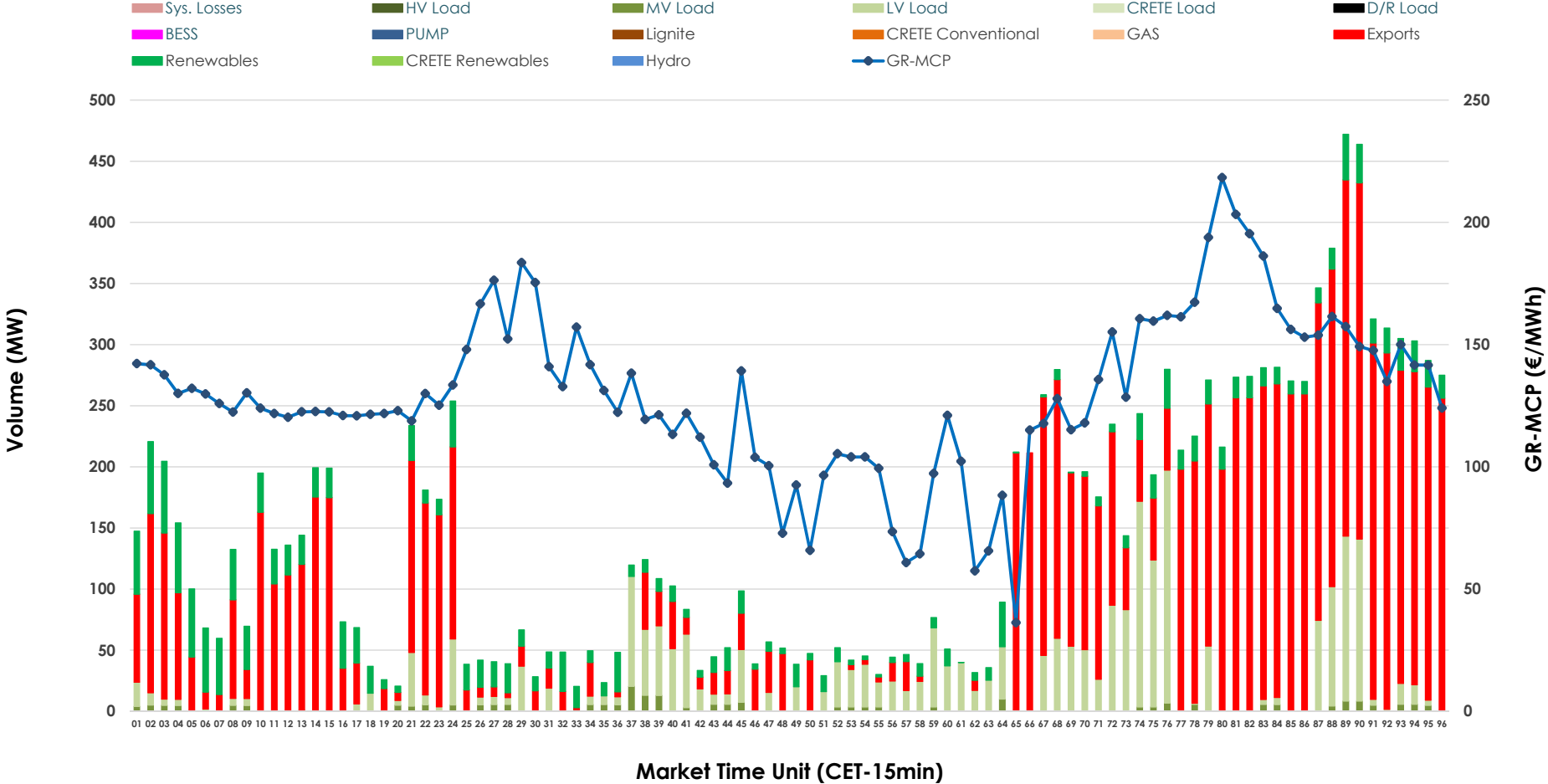


IDA '2' Market Outlook

03.04.2026 IDA '2' Market - Sell



03.04.2026 IDA '2' Market - Buy



GR Bidding Zone Weekly Figures

Delivery Day	28.03	29.03	30.03	31.03	01.04	02.04	03.04
	👇 -11%	👇 -12%	👆 57%	👆 18%	👆 11%	👇 -11%	👇 -4%
Avg.MCP (€/MWh)	82.83	73.07	115.06	135.71	150.68	134.81	129.15
Max.MCP (€/MWh)	159.68	139.62	222.69	223.43	227.84	207.31	218.30
Min.MCP (€/MWh)	6.23	-16.08	0.00	84.06	103.20	94.56	36.29
	👆 9%	👇 -17%	👆 11%	👆 37%	👆 54%	👆 12%	👇 -23%
Tot.Vol(GWh)	4.14	3.45	3.84	5.26	8.13	9.11	7.02

Trades by Order Type

Delivery Day		28.03	29.03	30.03	31.03	01.04	02.04	03.04	
Ord Price Type		Sell & Buy Trades in (GWh) per Price Type							(%)
PPT	(S)	0.000	0.000	0.000	0.000	0.000	0.000	0.000	0.00%
HBD	(S)	0.713	1.412	1.209	2.216	2.487	1.846	1.233	35.11%
BLK	(S)	0.000	0.000	0.000	0.000	0.000	0.000	0.000	0.00%
CPL	(S)	1.357	0.312	0.709	0.416	1.580	2.711	2.278	64.89%
PPT	(B)	0.000	0.000	0.000	0.000	0.000	0.000	0.000	0.00%
HBD	(B)	1.309	0.762	1.465	1.028	2.032	1.944	1.159	33.00%
BLK	(B)	0.000	0.000	0.000	0.000	0.000	0.000	0.000	0.00%
CPL	(B)	0.762	0.962	0.453	1.605	2.034	2.613	2.352	67.00%
		Sell & Buy Orders Traded per Price Type							(%)
PPT	(S)	0	0	0	0	0	0	0	0.00%
HBD	(S)	381	375	407	443	274	398	389	100.00%
BLK	(S)	0	0	0	0	0	0	0	0.00%
PPT	(B)	0	0	0	0	0	0	0	0.00%
HBD	(B)	490	233	511	587	571	409	404	100.00%
BLK	(B)	0	0	0	0	0	0	0	0.00%

- MCP** Market Clearing Price (€/MWh)
- PPT** Priority Price-Taking
- HBD** Hybrid
- BLK** Block
- CPL** Market Coupling Flow

Trade's Volume Mix

	Sell - MWh	Buy - MWh	
Lignite (0.0%)	0	0	(0.0%)
Crete Conv. (0.0%)	0	0	(0.0%)
Gas (16.3%)	572	0	(0.0%)
Hydro (0.0%)	0	0	(0.0%)
Imports (64.9%)	2,278		
RES (11.8%)	414	450	(12.8%)
Crete RES (0.0%)	0	0	(0.0%)
BESS (0.0%)	0	0	(0.0%)
HV Load (0.7%)	26	0	(0.0%)
MV Load (0.9%)	31	63	(1.8%)
LV Load (5.4%)	190	645	(18.4%)
Crete Load (0.0%)	0	0	(0.0%)
Pumping (0.0%)	0	0	(0.0%)
Exports		2,352	(67.0%)
Sys.Losses (0.0%)	0	0	(0.0%)
D/R Load (0.0%)	0	0	(0.0%)

