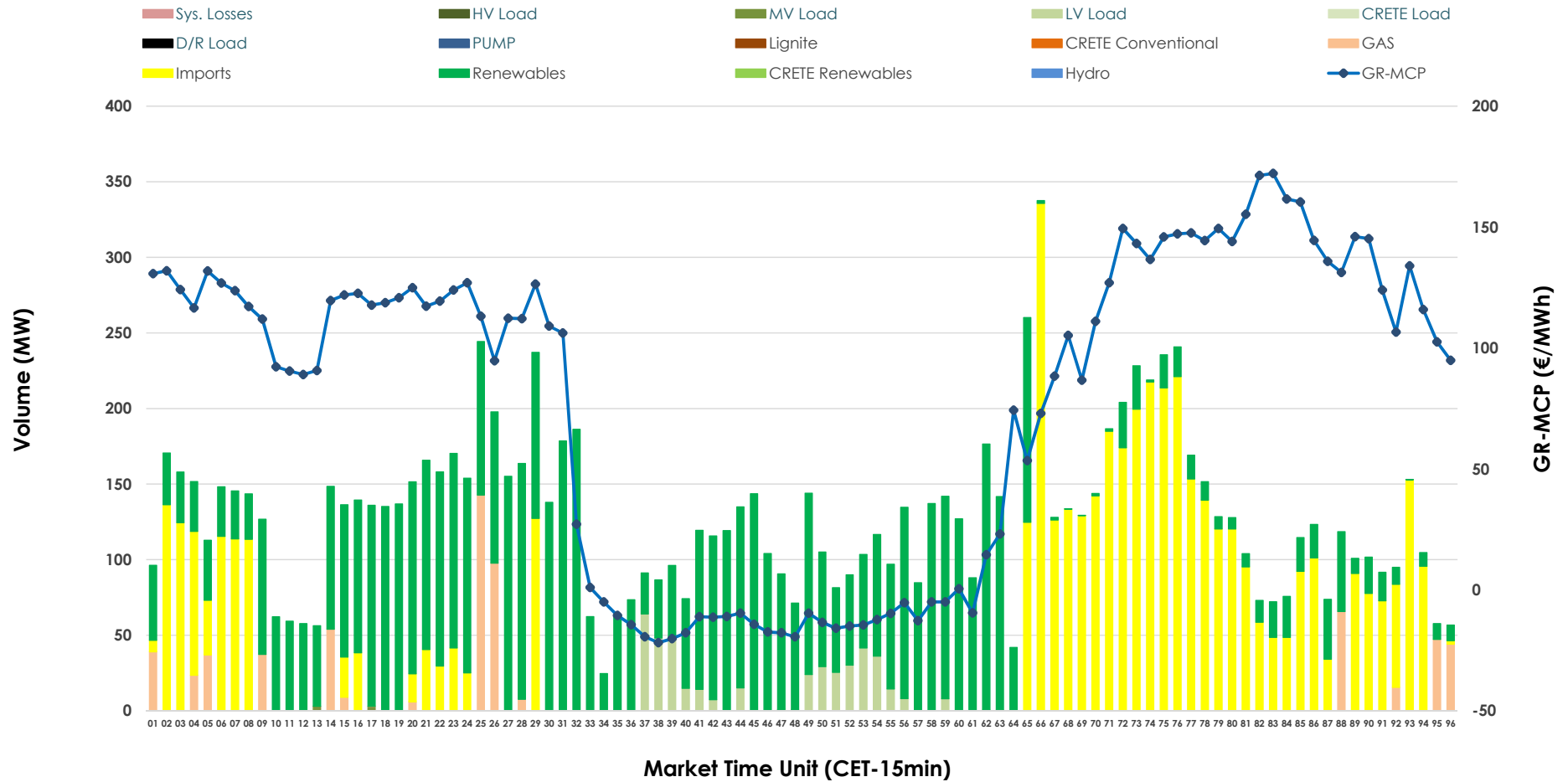


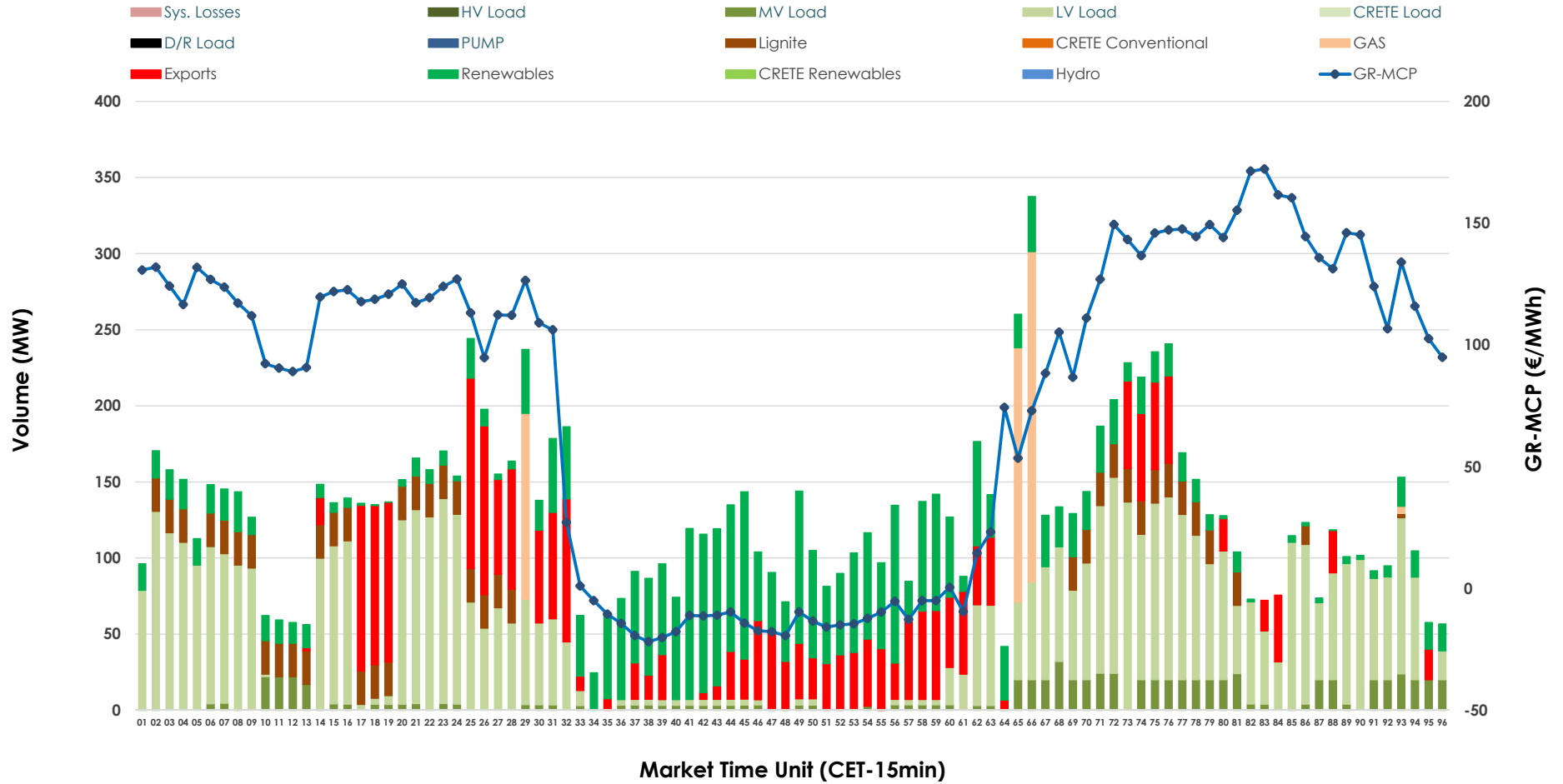


IDA '2' Market Outlook

15.03.2026 IDA '2' Market - Sell



15.03.2026 IDA '2' Market - Buy



GR Bidding Zone Weekly Figures

Delivery Day	09.03	10.03	11.03	12.03	13.03	14.03	15.03
	↗ 6%	↘ -2%	↗ 23%	↘ 14%	↘ -30%	↗ 7%	↘ -6%
Avg.MCP (€/MWh)	80.76	79.21	97.04	110.47	77.52	83.21	78.46
Max.MCP (€/MWh)	243.16	241.49	251.11	245.21	202.79	177.47	172.20
Min.MCP (€/MWh)	-12.08	-20.20	-5.65	-5.52	-24.50	-20.66	-21.83
	↗ 17%	↘ -8%	→ 0%	↘ -26%	↗ 68%	↘ -25%	↗ 30%
Tot.Vol(GWh)	5.63	5.15	5.13	3.81	6.41	4.78	6.22

Trades by Order Type

Delivery Day		09.03	10.03	11.03	12.03	13.03	14.03	15.03	
Ord Price Type		Sell & Buy Trades in (GWh) per Price Type							(%)
PPT	(S)	0.000	0.000	0.000	0.000	0.000	0.000	0.000	0.00%
HBD	(S)	2.807	2.427	1.646	1.294	3.108	1.681	1.893	60.89%
BLK	(S)	0.000	0.000	0.000	0.000	0.000	0.000	0.000	0.00%
CPL	(S)	0.009	0.150	0.918	0.610	0.097	0.711	1.216	39.11%
PPT	(B)	0.000	0.000	0.000	0.000	0.000	0.000	0.000	0.00%
HBD	(B)	1.503	1.250	2.181	1.045	1.311	2.145	2.551	82.03%
BLK	(B)	0.000	0.000	0.000	0.000	0.000	0.000	0.000	0.00%
CPL	(B)	1.313	1.327	0.383	0.859	1.894	0.246	0.559	17.97%
		Sell & Buy Orders Traded per Price Type							(%)
PPT	(S)	0	0	0	0	0	0	0	0.00%
HBD	(S)	231	272	338	291	287	277	292	100.00%
BLK	(S)	0	0	0	0	0	0	0	0.00%
PPT	(B)	0	0	0	0	0	0	0	0.00%
HBD	(B)	640	443	362	315	286	376	577	100.00%
BLK	(B)	0	0	0	0	0	0	0	0.00%

- MCP** Market Clearing Price (€/MWh)
- PPT** Priority Price-Taking
- HBD** Hybrid
- BLK** Block
- CPL** Market Coupling Flow

Trade's Volume Mix

		Sell - MWh	Buy - MWh	
Lignite	(0.0%)	0	213	(6.8%)
Crete Conv.	(0.0%)	0	0	(0.0%)
Gas	(5.0%)	157	128	(4.1%)
Hydro	(0.0%)	0	0	(0.0%)
Imports	(39.1%)	1,216		
RES	(52.3%)	1,626	745	(24.0%)
Crete RES	(0.0%)	0	0	(0.0%)
HV Load	(0.0%)	0	0	(0.0%)
MV Load	(0.1%)	3	183	(5.9%)
LV Load	(3.4%)	107	1,282	(41.2%)
Crete Load	(0.0%)	0	0	(0.0%)
Pumping	(0.0%)	0	0	(0.0%)
Exports			559	(18.0%)
Sys.Losses	(0.0%)	0	0	(0.0%)
D/R Load	(0.0%)	0	0	(0.0%)

