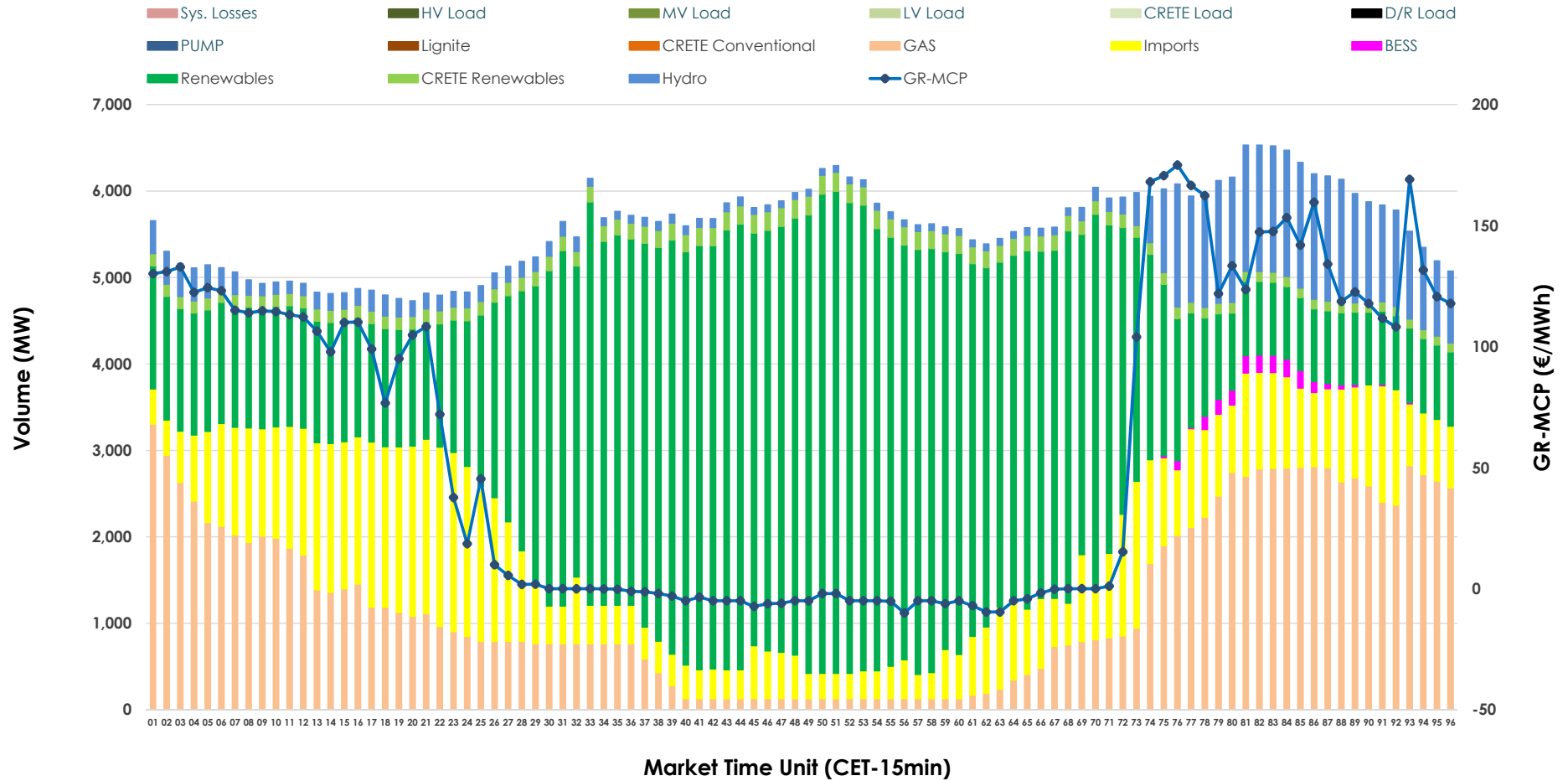


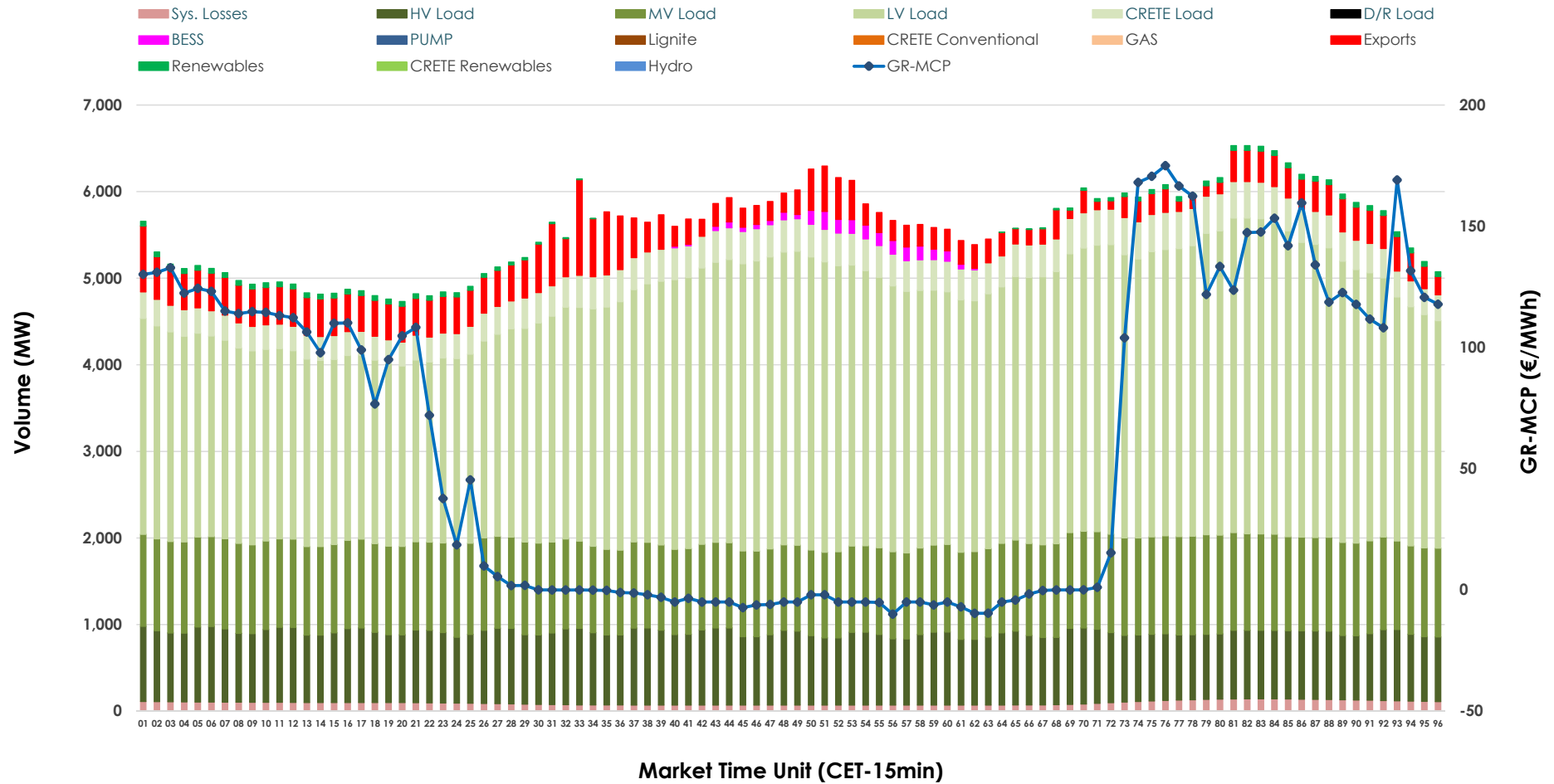


Day-Ahead Market Outlook

14.06.2026 Day-Ahead Market - Sell



14.06.2026 Day-Ahead Market - Buy



GR Bidding Zone Weekly Figures

Delivery Day	08.06	09.06	10.06	11.06	12.06	13.06	14.06
	↑ 65%	↔ 20%	↓ -9%	↓ -3%	↑ 16%	↓ -57%	↔ 20%
Avg.MCP (€/MWh)	95.42	114.46	104.15	100.74	116.43	49.69	59.78
Max.MCP (€/MWh)	198.86	221.03	200.90	167.58	171.46	169.10	175.01
Min.MCP (€/MWh)	-0.01	-0.01	-0.01	15.37	60.59	-34.00	-10.00
	↔ 26%	↔ 3%	↓ -2%	↓ -2%	↓ -4%	↓ -11%	↓ -10%
Tot.Vol(GWh)	351.55	361.76	354.80	348.94	333.52	297.06	268.05

Trades by Order Type

Delivery Day		08.06	09.06	10.06	11.06	12.06	13.06	14.06	
Ord Price Type		Sell & Buy Trades in (GWh) per Price Type							(%)
PPT	(S)	72.630	65.539	61.558	57.801	57.093	68.037	56.168	41.91%
HBD	(S)	72.260	79.650	77.318	74.310	63.660	57.846	50.363	37.58%
BLK	(S)	30.502	33.822	37.882	36.463	32.591	14.016	16.742	12.49%
CPL	(S)	0.382	1.870	0.639	5.898	13.414	8.628	10.751	8.02%
PPT	(B)	16.525	15.928	16.475	16.757	16.583	16.499	15.914	11.87%
HBD	(B)	142.899	146.848	145.565	147.692	144.354	123.659	113.815	84.92%
BLK	(B)	0.000	0.000	0.000	0.000	0.000	0.000	0.000	0.00%
CPL	(B)	16.351	18.105	15.358	10.022	5.821	8.370	4.295	3.20%
		Sell & Buy Orders Traded per Price Type							(%)
PPT	(S)	1794	1689	1649	1662	1672	1583	1528	35.99%
HBD	(S)	3328	3724	3651	3597	3357	2561	2705	63.71%
BLK	(S)	14	18	17	15	16	8	13	0.31%
PPT	(B)	2408	2379	2333	2348	2344	2406	2364	37.73%
HBD	(B)	3616	3938	4000	3995	3843	4001	3902	62.27%
BLK	(B)	0	0	0	0	0	0	0	0.00%

MCP Market Clearing Price (€/MWh)
PPT Priority Price-Taking
HBD Hybrid
BLK Block
CPL Market Coupling Flow

Trade's Volume Mix

	Sell - MWh	Buy - MWh	
Lignite (0.0%)	0	0	(0.0%)
Crete Conv. (0.0%)	0	0	(0.0%)
Gas (22.4%)	30,019	0	(0.0%)
Hydro (7.4%)	9,853	0	(0.0%)
Imports (16.6%)	22,214		
RES (50.4%)	67,584	731	(0.5%)
Crete RES (2.9%)	3,867	0	(0.0%)
BESS (0.4%)	487	554	(0.4%)
HV Load (0.0%)	0	19,510	(14.6%)
MV Load (0.0%)	0	25,037	(18.7%)
LV Load (0.0%)	0	68,915	(51.4%)
Crete Load (0.0%)	0	8,413	(6.3%)
Pumping (0.0%)	0	0	(0.0%)
Exports		8,597	(6.4%)
Sys.Losses (0.0%)	0	2,267	(1.7%)
D/R Load (0.0%)	0	0	(0.0%)

