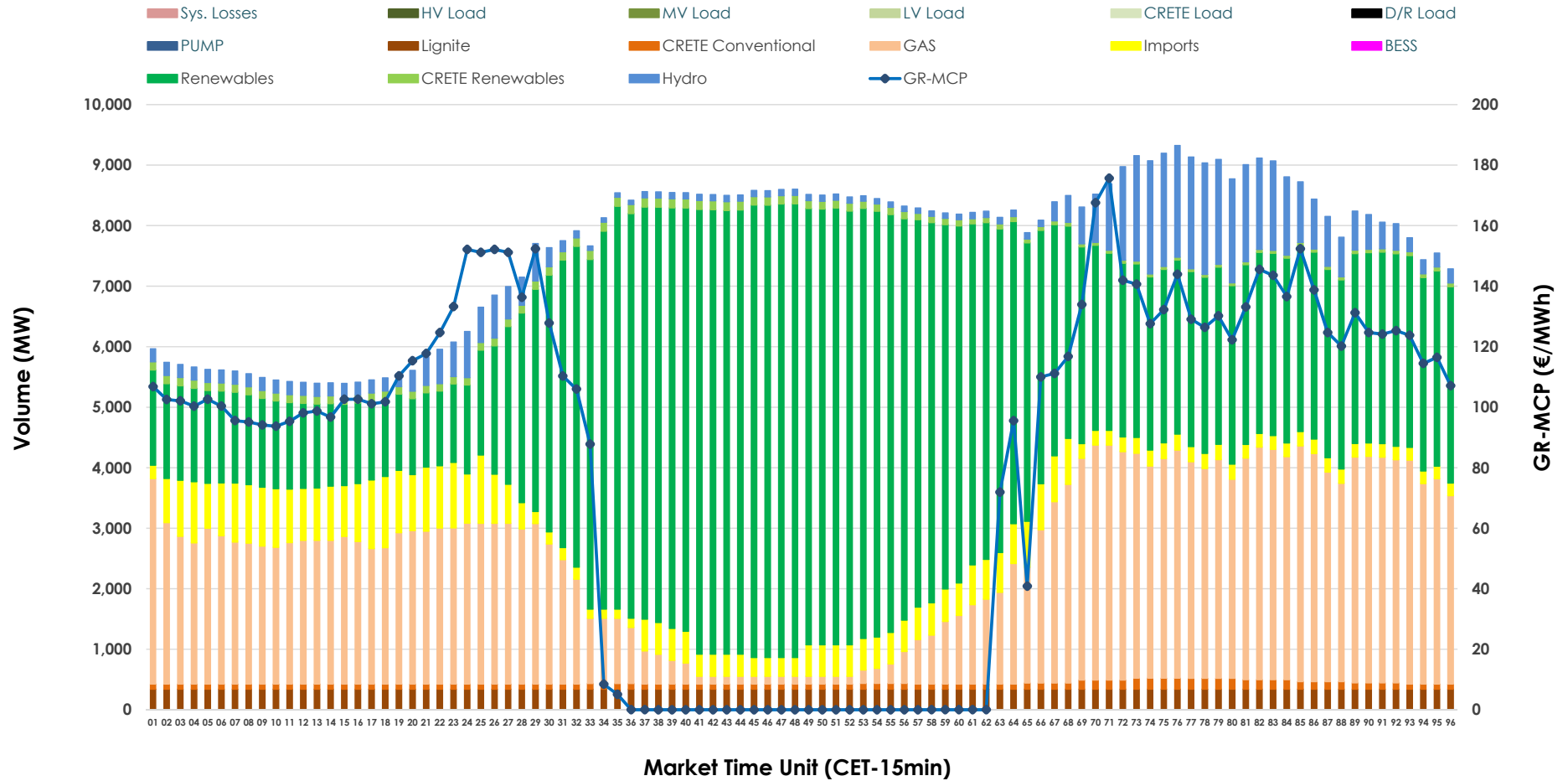


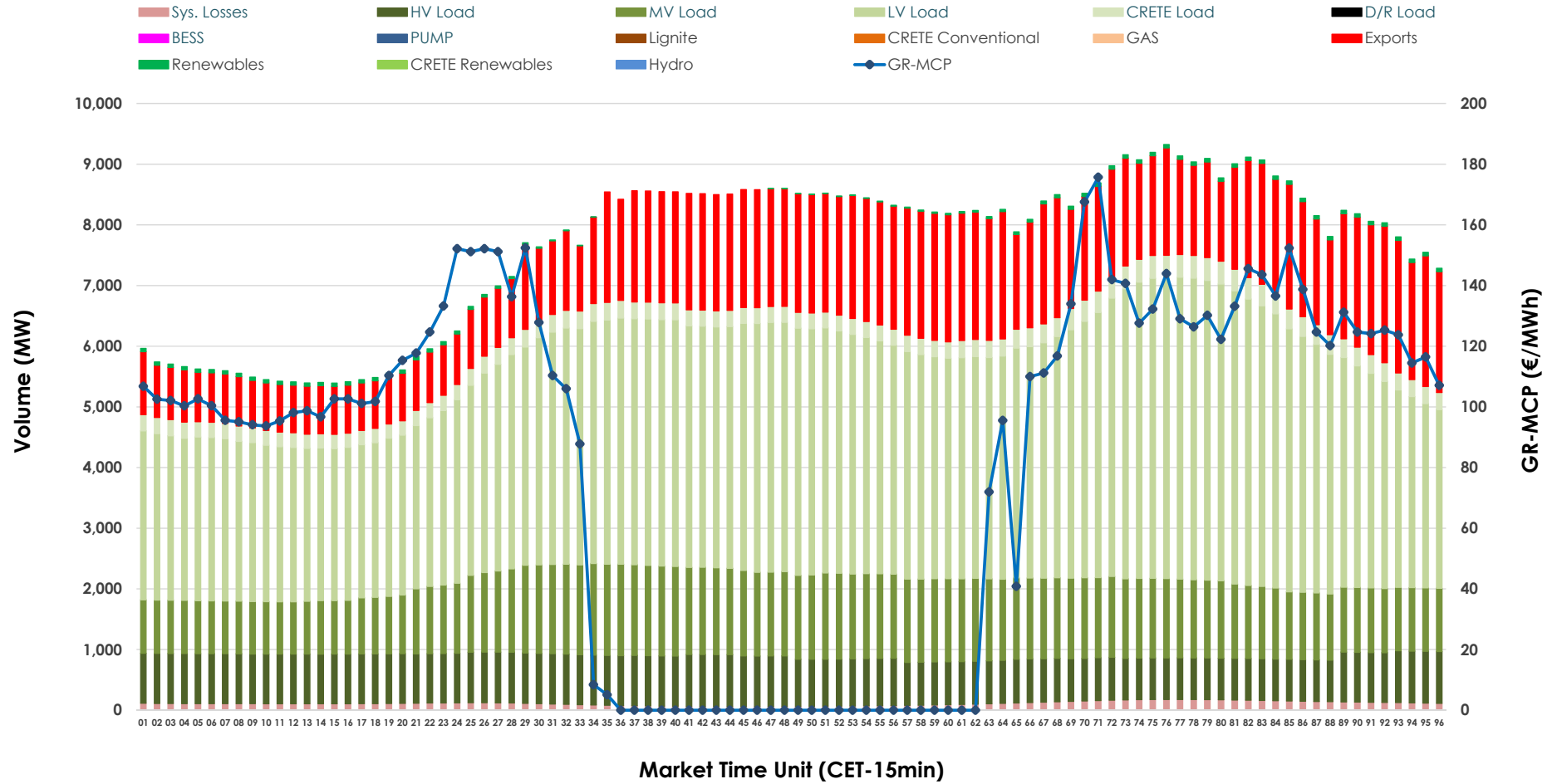


Day-Ahead Market Outlook

26.03.2026 Day-Ahead Market - Sell



26.03.2026 Day-Ahead Market - Buy



GR Bidding Zone Weekly Figures

Delivery Day	20.03	21.03	22.03	23.03	24.03	25.03	26.03
	↗ 11%	↘ -14%	↘ -12%	↗ 74%	↘ -26%	↘ -28%	↗ 6%
Avg.MCP (€/MWh)	112.04	96.67	84.78	147.74	109.02	78.87	83.46
Max.MCP (€/MWh)	250.73	176.61	192.93	281.69	198.53	205.42	175.68
Min.MCP (€/MWh)	13.00	0.00	0.00	63.72	8.47	0.00	0.00
	↗ 5%	↘ -2%	↘ -9%	↗ 9%	↘ -1%	↘ -3%	↘ -3%
Tot.Vol(GWh)	405.85	396.49	362.14	394.91	389.09	376.78	367.18

Trades by Order Type

Delivery Day		20.03	21.03	22.03	23.03	24.03	25.03	26.03	
Ord Price Type		Sell & Buy Trades in (GWh) per Price Type							(%)
PPT	(S)	96.577	90.130	82.949	77.542	83.245	80.498	67.792	36.93%
HBD	(S)	78.081	79.261	67.215	71.298	76.867	77.174	75.969	41.38%
BLK	(S)	28.178	28.856	30.904	46.688	30.410	29.791	31.782	17.31%
CPL	(S)	0.092	0.000	0.000	1.928	4.021	0.928	8.049	4.38%
PPT	(B)	13.501	14.027	13.092	14.391	14.986	13.576	13.255	7.22%
HBD	(B)	153.779	145.947	132.444	147.269	153.909	136.888	146.733	79.92%
BLK	(B)	0.000	0.000	0.000	0.000	0.000	0.000	0.000	0.00%
CPL	(B)	35.647	38.273	35.532	35.796	25.648	37.926	23.605	12.86%
		Sell & Buy Orders Traded per Price Type							(%)
PPT	(S)	2050	1902	1902	1886	1849	1726	1755	38.55%
HBD	(S)	3049	2881	2817	3216	3103	2699	2787	61.21%
BLK	(S)	13	16	18	25	10	11	11	0.24%
PPT	(B)	2233	2232	2217	2231	2234	2270	2270	35.36%
HBD	(B)	4064	4095	4167	4048	4147	4359	4150	64.64%
BLK	(B)	0	0	0	0	0	0	0	0.00%

- MCP** Market Clearing Price (€/MWh)
- PPT** Priority Price-Taking
- HBD** Hybrid
- BLK** Block
- CPL** Market Coupling Flow

Trade's Volume Mix

	Sell - MWh	Buy - MWh	
Lignite (4.4%)	8,160	0	(0.0%)
Crete Conv. (1.3%)	2,441	0	(0.0%)
Gas (28.5%)	52,399	0	(0.0%)
Hydro (6.1%)	11,276	0	(0.0%)
Imports (6.8%)	12,444		
RES (51.4%)	94,380	880	(0.5%)
Crete RES (1.4%)	2,492	0	(0.0%)
BESS (0.0%)	0	0	(0.0%)
HV Load (0.0%)	0	18,741	(10.2%)
MV Load (0.0%)	0	29,341	(16.0%)
LV Load (0.0%)	0	87,922	(47.9%)
Crete Load (0.0%)	0	6,910	(3.8%)
Pumping (0.0%)	0	0	(0.0%)
Exports		37,099	(20.2%)
Sys.Losses (0.0%)	0	2,700	(1.5%)
D/R Load (0.0%)	0	0	(0.0%)

