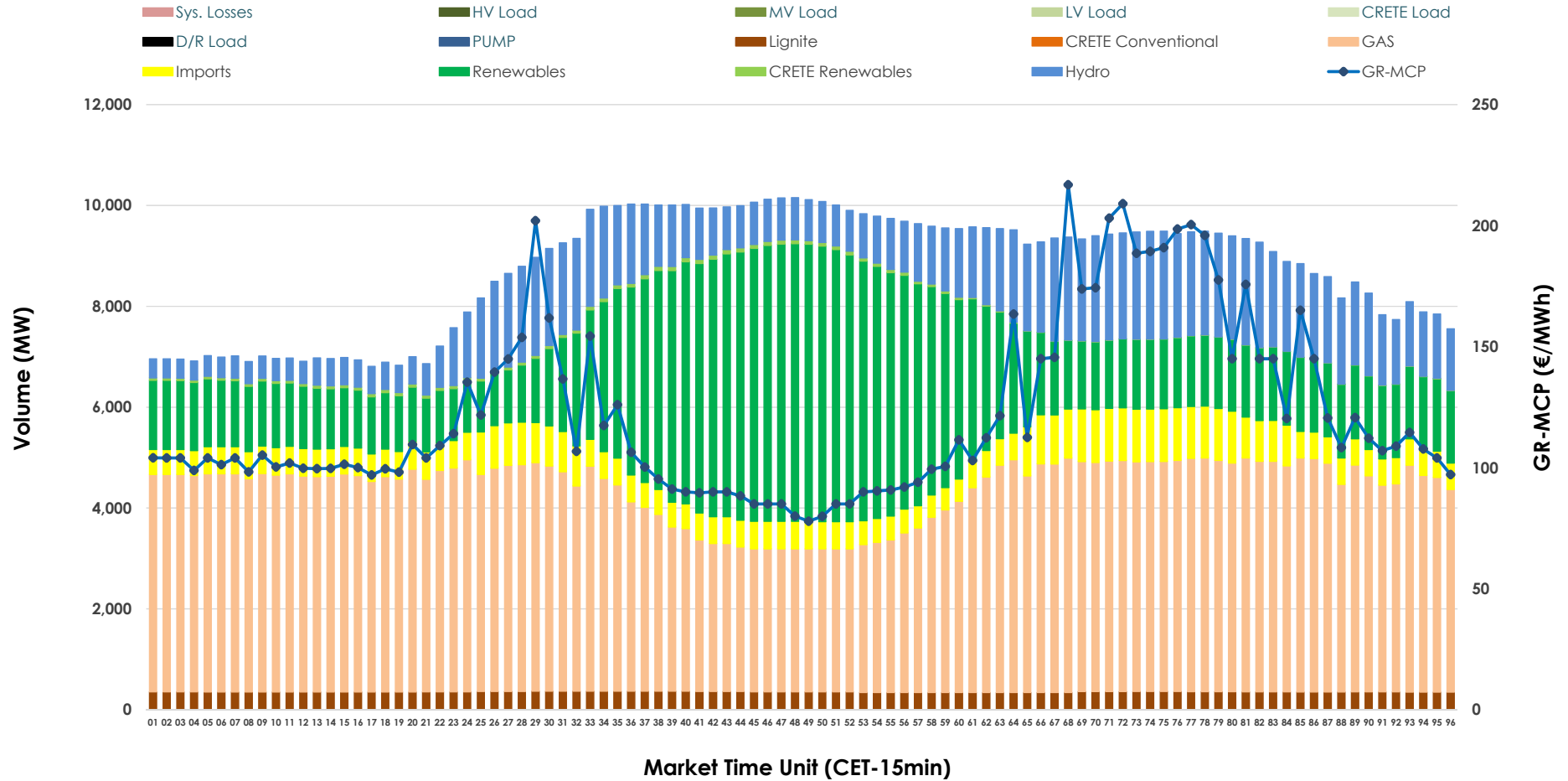


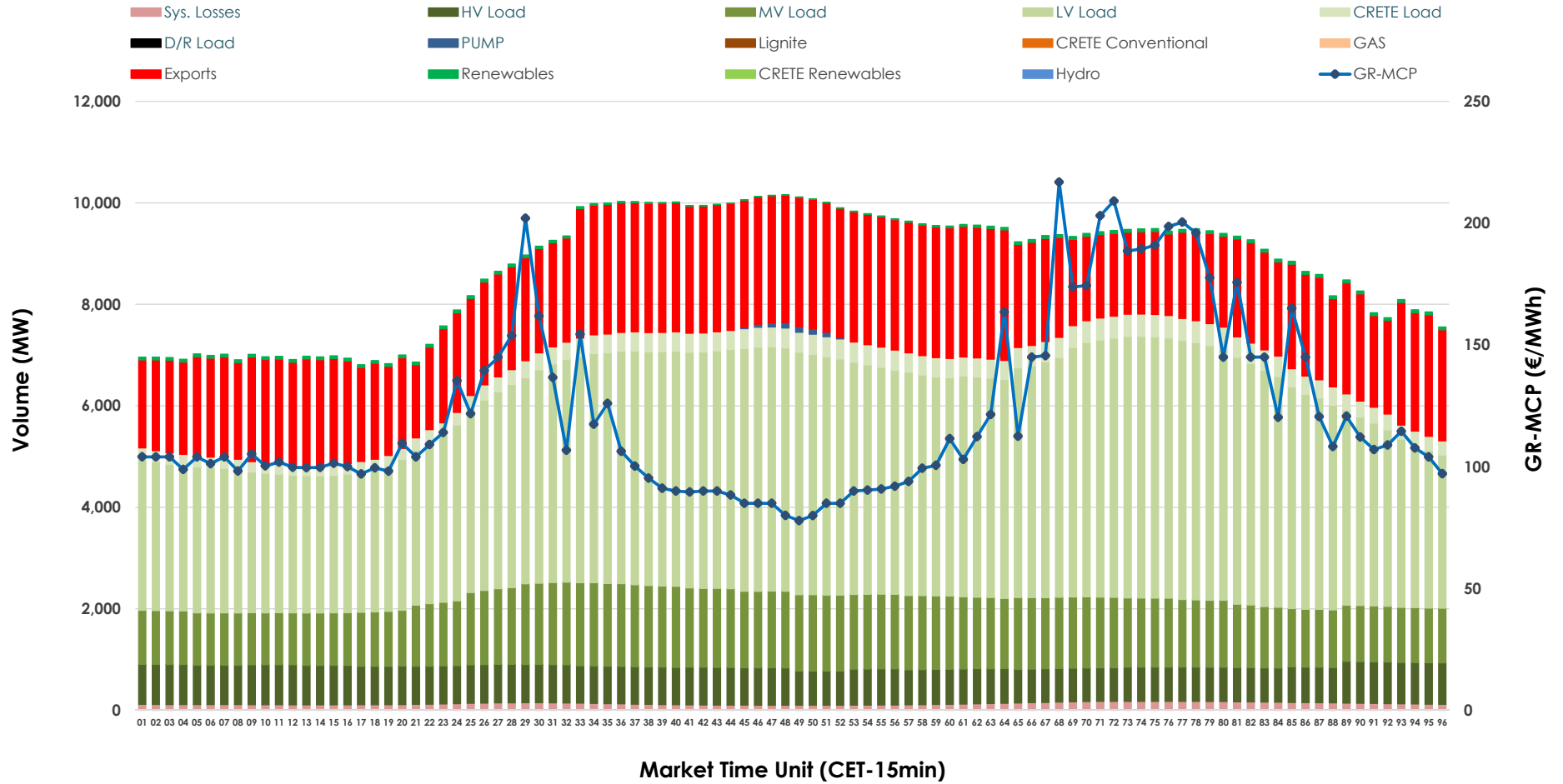


Day-Ahead Market Outlook

03.02.2026 Day-Ahead Market - Sell



03.02.2026 Day-Ahead Market - Buy



GR Bidding Zone Weekly Figures

Delivery Day	28.01	29.01	30.01	31.01	01.02	02.02	03.02
	↘ -31%	↗ 2%	↗ 1%	↗ 8%	↘ -4%	↗ 20%	↗ 0%
Avg.MCP (€/MWh)	94.63	96.93	97.48	105.72	101.14	121.82	121.82
Max.MCP (€/MWh)	157.84	178.52	162.33	155.04	134.83	246.62	216.88
Min.MCP (€/MWh)	25.00	0.01	32.69	47.50	60.00	89.15	77.88
	↗ 1%	↗ 0%	↘ -4%	↘ -5%	↘ -2%	↗ 12%	↘ -2%
Tot.Vol(GWh)	426.74	427.94	410.83	391.47	383.04	429.13	420.24

Trades by Order Type

Delivery Day		28.01	29.01	30.01	31.01	01.02	02.02	03.02	
Ord Price Type		Sell & Buy Trades in (GWh) per Price Type							(%)
PPT	(S)	97.501	103.603	94.378	86.154	93.785	94.401	86.646	41.24%
HBD	(S)	76.448	69.885	77.379	63.490	61.041	73.737	71.789	34.17%
BLK	(S)	39.420	40.479	33.660	46.080	34.935	44.589	48.842	23.24%
CPL	(S)	0.000	0.000	0.000	0.010	1.760	1.837	2.844	1.35%
PPT	(B)	15.173	14.595	14.582	13.273	12.883	14.412	14.445	6.87%
HBD	(B)	156.132	154.909	149.993	144.217	139.193	157.240	156.715	74.58%
BLK	(B)	0.000	0.000	0.000	0.000	0.000	0.000	0.000	0.00%
CPL	(B)	42.063	44.464	40.843	38.244	39.446	42.912	38.961	18.54%
		Sell & Buy Orders Traded per Price Type							(%)
PPT	(S)	2121	2169	2166	2238	2123	2177	2232	42.64%
HBD	(S)	2843	2630	2758	2948	2632	2732	2988	57.08%
BLK	(S)	14	19	15	17	18	19	15	0.29%
PPT	(B)	2276	2270	2272	2230	2337	2229	2216	36.33%
HBD	(B)	3957	3992	4044	3974	3890	3882	3884	63.67%
BLK	(B)	0	0	0	0	0	0	0	0.00%

- MCP** Market Clearing Price (€/MWh)
- PPT** Priority Price-Taking
- HBD** Hybrid
- BLK** Block
- CPL** Market Coupling Flow

Trade's Volume Mix

		Sell - MWh	Buy - MWh	
Lignite	(4.0%)	8,488	0	(0.0%)
Crete Conv.	(0.0%)	0	0	(0.0%)
Gas	(46.4%)	97,577	0	(0.0%)
Hydro	(14.7%)	30,824	0	(0.0%)
Imports	(7.3%)	15,415		
RES	(27.0%)	56,789	1,011	(0.5%)
Crete RES	(0.5%)	1,028	0	(0.0%)
HV Load	(0.0%)	0	17,559	(8.4%)
MV Load	(0.0%)	0	31,735	(15.1%)
LV Load	(0.0%)	0	97,392	(46.4%)
Crete Load	(0.0%)	0	8,091	(3.9%)
Pumping	(0.0%)	0	154	(0.1%)
Exports			51,078	(24.3%)
Sys.Losses	(0.0%)	0	3,101	(1.5%)
D/R Load	(0.0%)	0	0	(0.0%)

