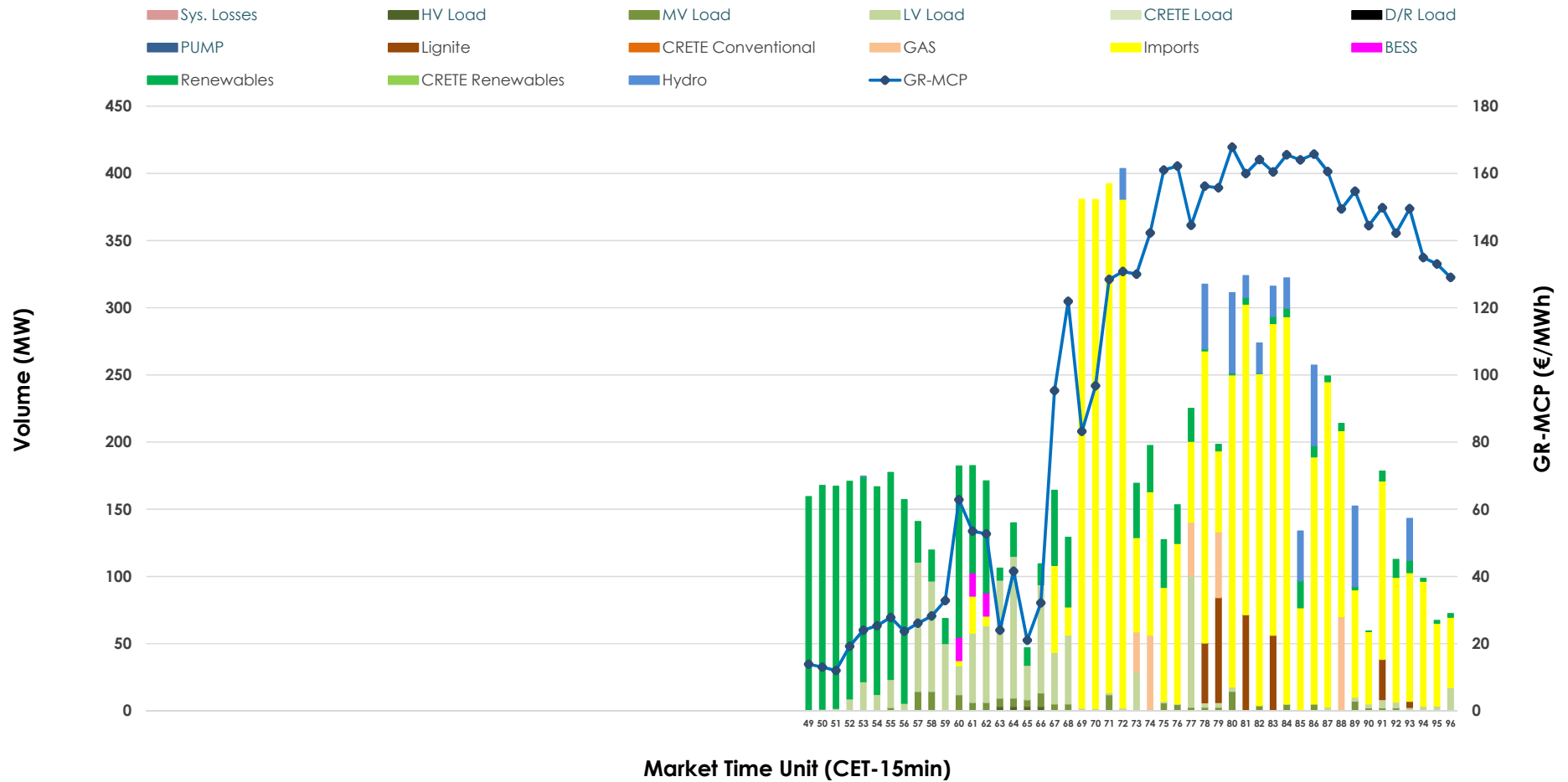


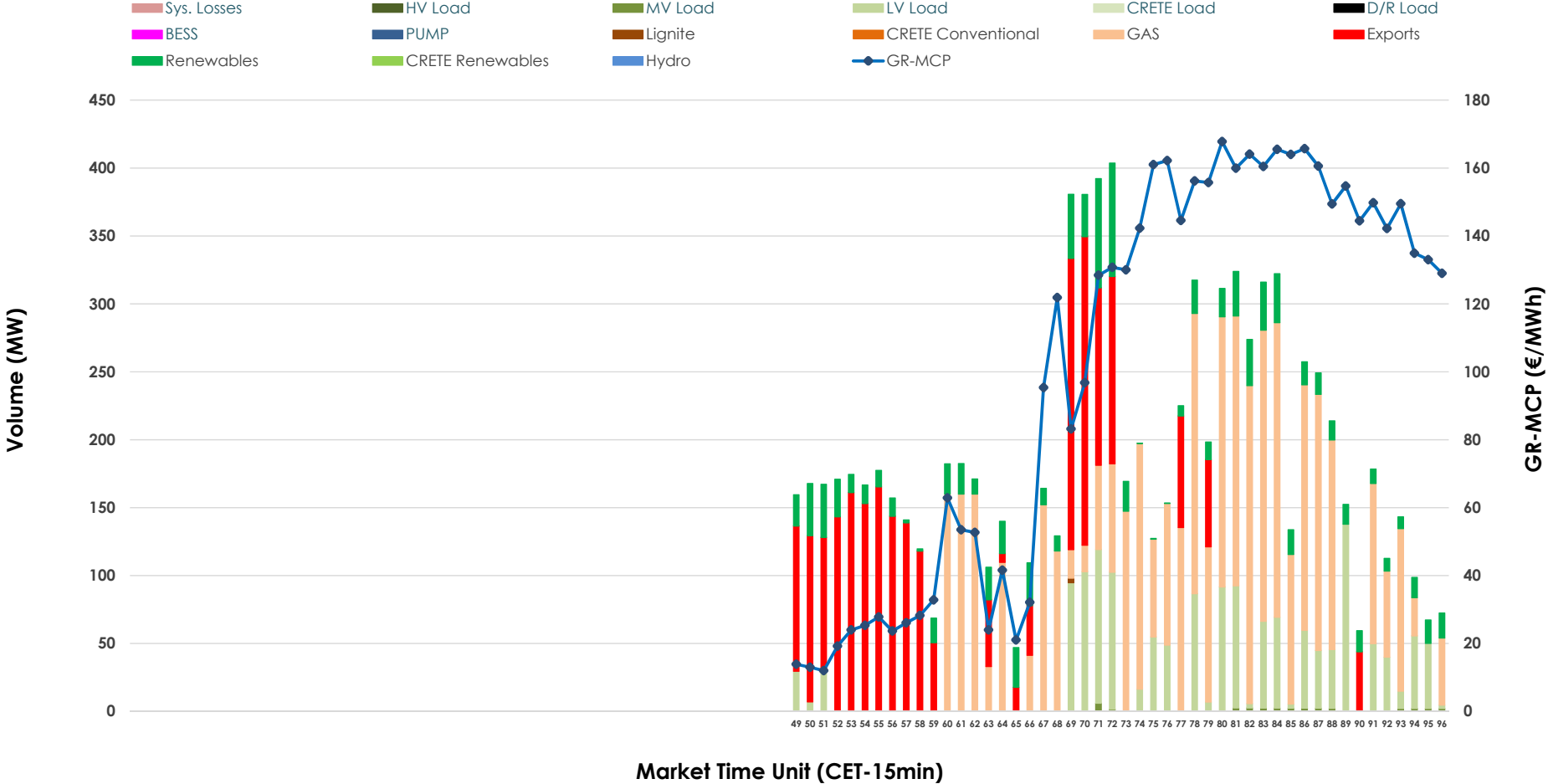


# IDA '3' Market Outlook

03.07.2026 IDA '3' Market - Sell



### 03.07.2026 IDA '3' Market - Buy



### GR Bidding Zone Weekly Figures

Delivery Day	27.06	28.06	29.06	30.06	01.07	02.07	03.07
	↗ 7%	↘ -16%	↗ 53%	↗ 34%	↗ 30%	↘ -22%	↘ -32%
<b>Avg.MCP (€/MWh)</b>	85.43	71.73	109.63	146.77	190.27	148.71	100.77
<b>Max.MCP (€/MWh)</b>	165.16	150.37	276.03	274.88	377.48	246.13	167.80
<b>Min.MCP (€/MWh)</b>	-8.89	-6.23	3.00	30.33	85.03	34.41	12.00
	↗ 16%	↘ -1%	↗ 127%	↘ -30%	↗ 27%	↗ 19%	↗ 24%
<b>Tot.Vol(GWh)</b>	1.54	1.53	3.47	2.43	3.10	3.69	4.57

### Trades by Order Type

Delivery Day		27.06	28.06	29.06	30.06	01.07	02.07	03.07	
<b>Ord Price Type</b>		<b>Sell &amp; Buy Trades in (GWh) per Price Type</b>							<b>(%)</b>
<b>PPT</b>	(S)	0.000	0.000	0.000	0.000	0.000	0.000	0.000	0.00%
<b>HBD</b>	(S)	0.743	0.493	1.725	1.059	0.715	0.396	1.059	46.41%
<b>BLK</b>	(S)	0.000	0.000	0.000	0.000	0.000	0.000	0.000	0.00%
<b>CPL</b>	(S)	0.029	0.270	0.009	0.157	0.835	1.447	1.223	53.59%
<b>PPT</b>	(B)	0.000	0.000	0.000	0.000	0.000	0.000	0.000	0.00%
<b>HBD</b>	(B)	0.551	0.715	0.971	1.167	1.399	1.811	1.680	73.61%
<b>BLK</b>	(B)	0.000	0.000	0.000	0.000	0.000	0.000	0.000	0.00%
<b>CPL</b>	(B)	0.221	0.048	0.763	0.049	0.150	0.032	0.603	26.39%
		<b>Sell &amp; Buy Orders Traded per Price Type</b>							<b>(%)</b>
<b>PPT</b>	(S)	0	0	0	0	0	0	0	0.00%
<b>HBD</b>	(S)	199	132	195	148	167	83	210	100.00%
<b>BLK</b>	(S)	0	0	0	0	0	0	0	0.00%
<b>PPT</b>	(B)	0	0	0	0	0	0	0	0.00%
<b>HBD</b>	(B)	149	172	202	337	346	286	200	100.00%
<b>BLK</b>	(B)	0	0	0	0	0	0	0	0.00%

- MCP** Market Clearing Price (€/MWh)
- PPT** Priority Price-Taking
- HBD** Hybrid
- BLK** Block
- CPL** Market Coupling Flow

### Trade's Volume Mix

	Sell - MWh	Buy - MWh	
<b>Lignite</b> (3.1%)	71	1	(0.0%)
<b>Crete Conv.</b> (0.0%)	0	0	(0.0%)
<b>Gas</b> (2.7%)	61	1,038	(45.5%)
<b>Hydro</b> (4.4%)	101	0	(0.0%)
<b>Imports</b> (53.6%)	1,223		
<b>RES</b> (22.6%)	515	258	(11.3%)
<b>Crete RES</b> (0.0%)	0	0	(0.0%)
<b>BESS</b> (0.6%)	13	0	(0.0%)
<b>HV Load</b> (0.1%)	3	0	(0.0%)
<b>MV Load</b> (1.8%)	42	9	(0.4%)
<b>LV Load</b> (11.1%)	253	375	(16.4%)
<b>Crete Load</b> (0.0%)	0	0	(0.0%)
<b>Pumping</b> (0.0%)	0	0	(0.0%)
<b>Exports</b>		603	(26.4%)
<b>Sys.Losses</b> (0.0%)	0	0	(0.0%)
<b>D/R Load</b> (0.0%)	0	0	(0.0%)

