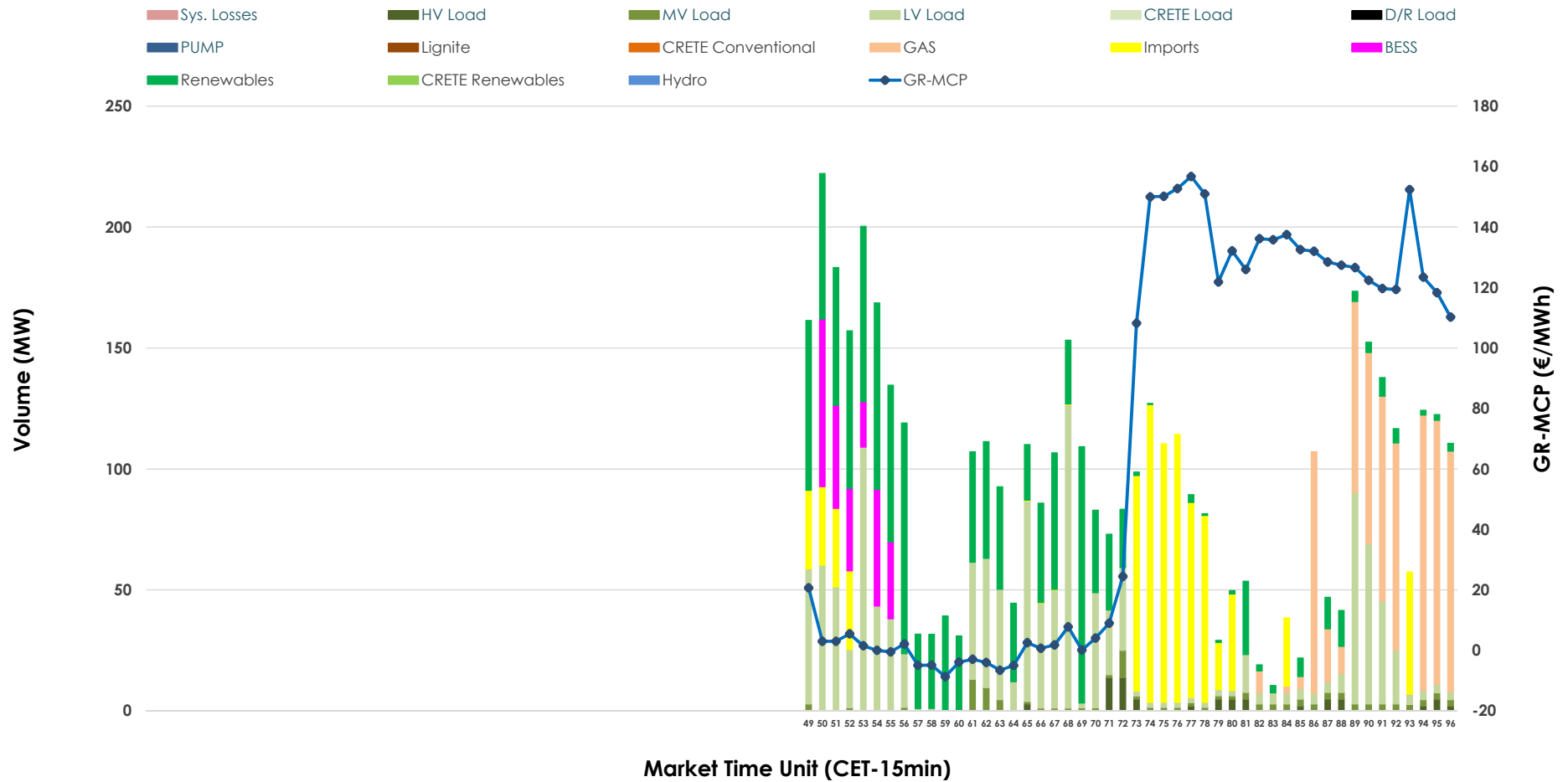


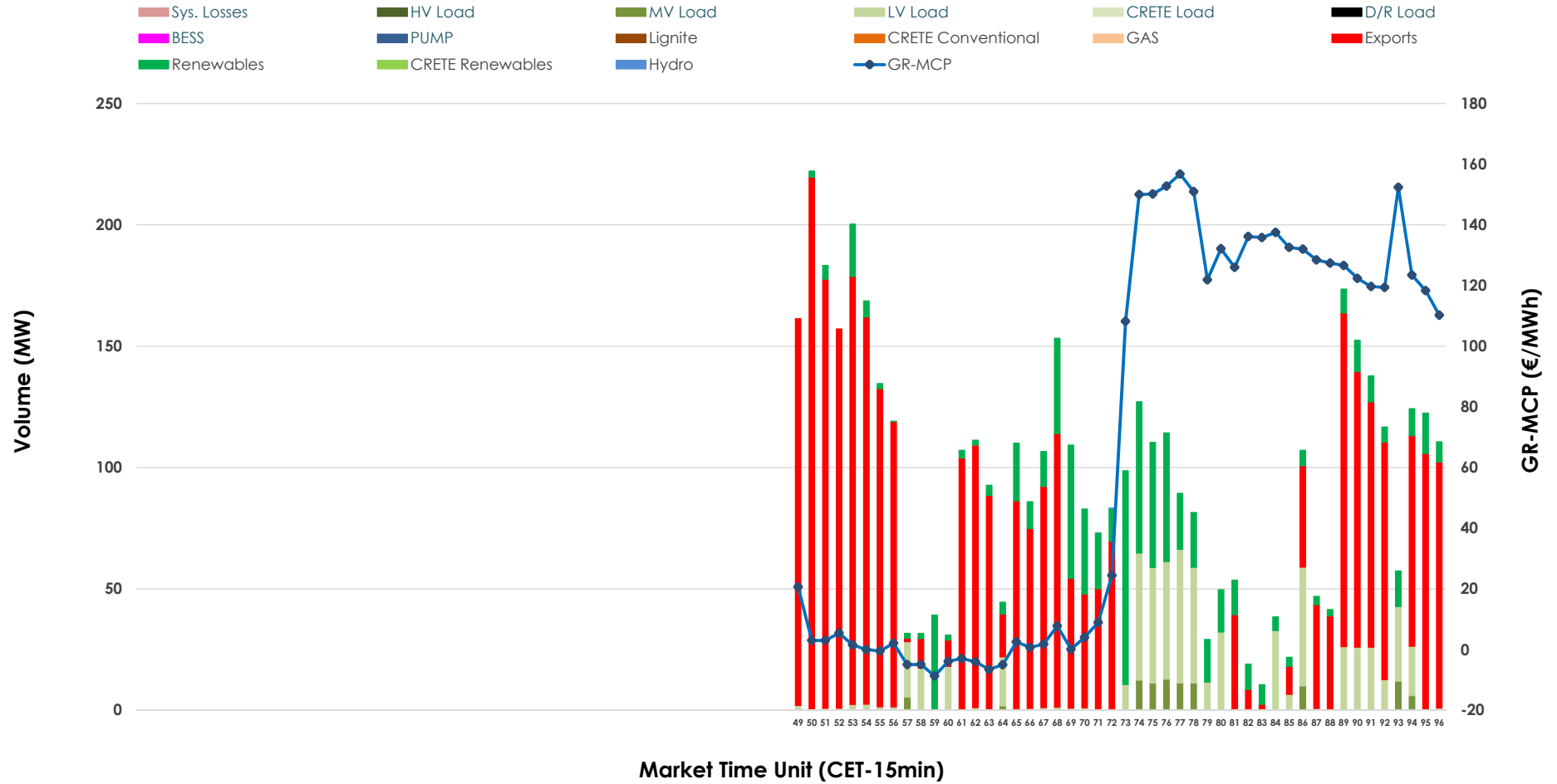


IDA '3' Market Outlook

14.06.2026 IDA '3' Market - Sell



14.06.2026 IDA '3' Market - Buy



GR Bidding Zone Weekly Figures

Delivery Day	08.06	09.06	10.06	11.06	12.06	13.06	14.06
	↑ 72%	→ 1%	↔ 5%	↓ -14%	↔ 5%	↓ -57%	↑ 43%
Avg.MCP (€/MWh)	114.70	115.70	121.94	104.93	110.09	46.84	67.00
Max.MCP (€/MWh)	195.70	203.07	197.81	162.38	171.30	124.40	156.76
Min.MCP (€/MWh)	6.55	16.45	-6.35	35.10	79.76	-25.47	-8.70
	↔ 26%	↑ 40%	↓ -13%	↔ 31%	↓ -57%	↓ -28%	↑ 129%
Tot.Vol(GWh)	2.04	2.85	2.48	3.26	1.42	1.02	2.34

Trades by Order Type

Delivery Day		08.06	09.06	10.06	11.06	12.06	13.06	14.06	
Ord Price Type		Sell & Buy Trades in (GWh) per Price Type							(%)
PPT	(S)	0.000	0.000	0.000	0.000	0.000	0.000	0.000	0.00%
HBD	(S)	0.529	1.346	0.406	0.777	0.697	0.500	0.954	81.66%
BLK	(S)	0.000	0.000	0.000	0.000	0.000	0.000	0.000	0.00%
CPL	(S)	0.492	0.081	0.836	0.855	0.011	0.010	0.214	18.34%
PPT	(B)	0.000	0.000	0.000	0.000	0.000	0.000	0.000	0.00%
HBD	(B)	1.007	0.618	0.618	0.702	0.345	0.454	0.381	32.58%
BLK	(B)	0.000	0.000	0.000	0.000	0.000	0.000	0.000	0.00%
CPL	(B)	0.014	0.809	0.625	0.930	0.363	0.057	0.788	67.42%
		Sell & Buy Orders Traded per Price Type							(%)
PPT	(S)	0	0	0	0	0	0	0	0.00%
HBD	(S)	133	237	156	168	278	214	244	100.00%
BLK	(S)	0	0	0	0	0	0	0	0.00%
PPT	(B)	0	0	0	0	0	0	0	0.00%
HBD	(B)	255	274	245	229	184	131	156	100.00%
BLK	(B)	0	0	0	0	0	0	0	0.00%

- MCP** Market Clearing Price (€/MWh)
- PPT** Priority Price-Taking
- HBD** Hybrid
- BLK** Block
- CPL** Market Coupling Flow

Trade's Volume Mix

	Sell - MWh	Buy - MWh	
Lignite (0.0%)	0	0	(0.0%)
Crete Conv. (0.0%)	0	0	(0.0%)
Gas (17.1%)	200	0	(0.0%)
Hydro (0.0%)	0	0	(0.0%)
Imports (18.3%)	214		
RES (28.1%)	328	198	(16.9%)
Crete RES (0.0%)	0	0	(0.0%)
BESS (5.2%)	61	0	(0.0%)
HV Load (1.5%)	18	0	(0.0%)
MV Load (2.3%)	27	24	(2.0%)
LV Load (27.4%)	320	159	(13.6%)
Crete Load (0.0%)	0	0	(0.0%)
Pumping (0.0%)	0	0	(0.0%)
Exports		788	(67.4%)
Sys.Losses (0.0%)	0	0	(0.0%)
D/R Load (0.0%)	0	0	(0.0%)

