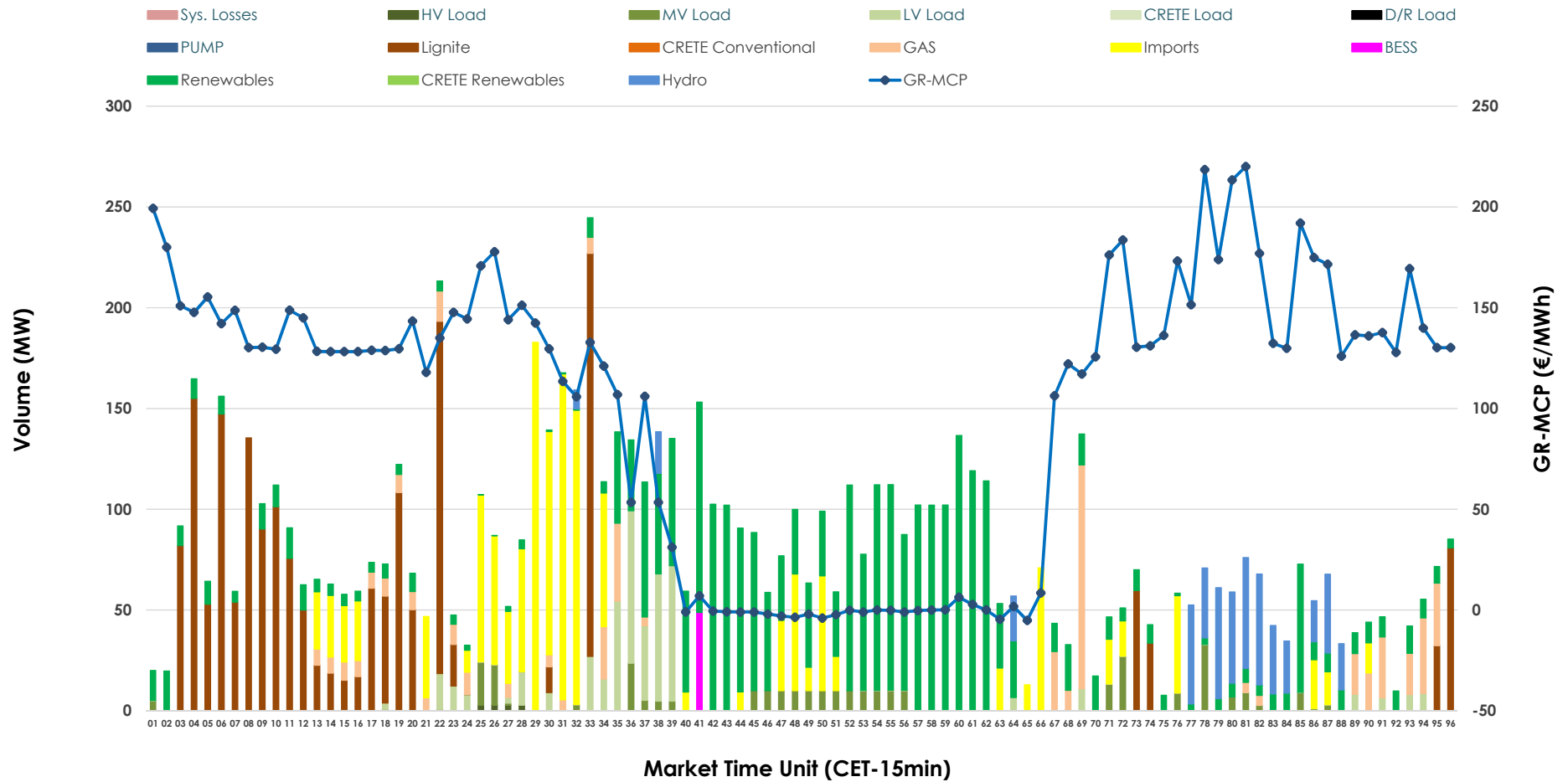


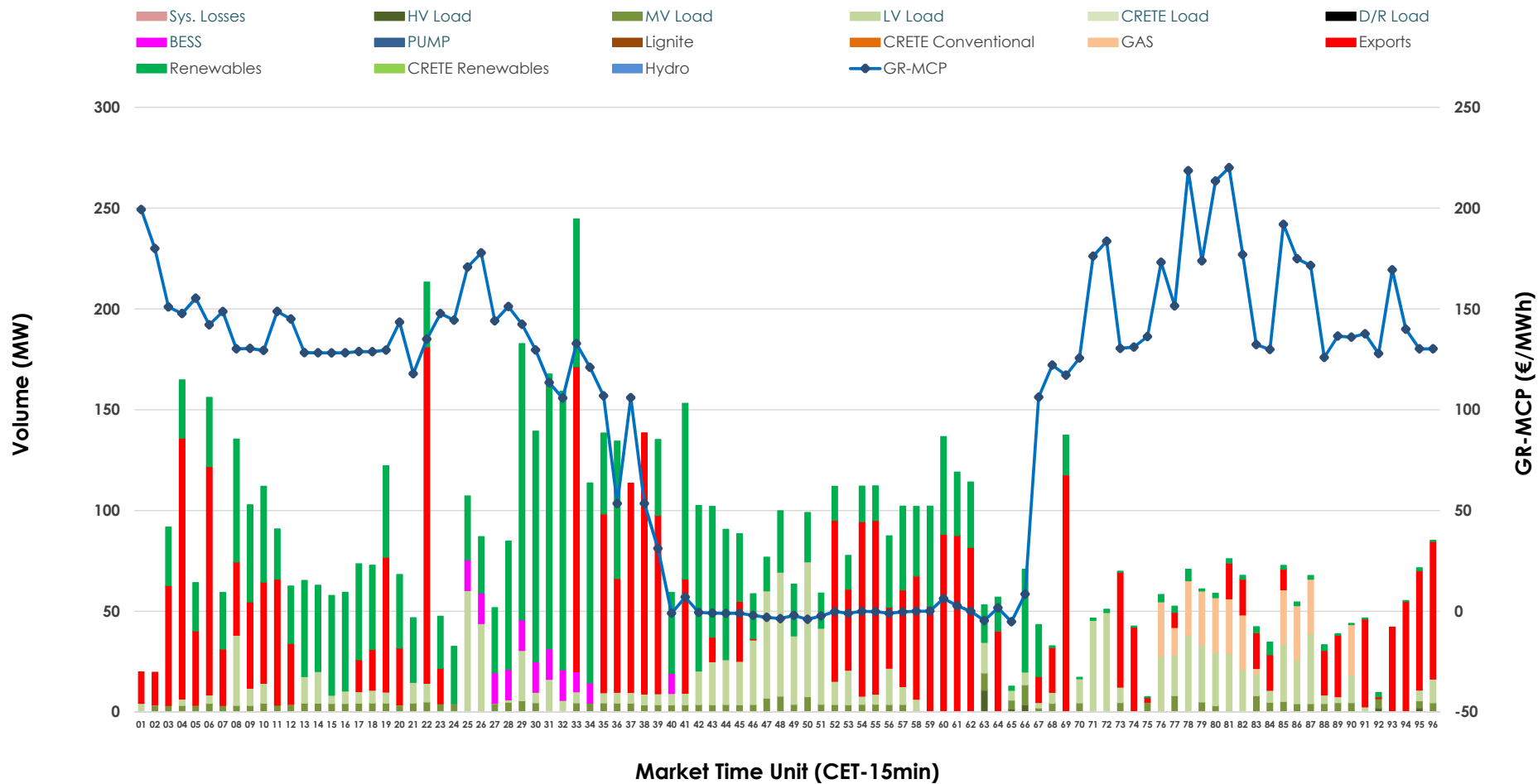


IDA '2' Market Outlook

29.04.2026 IDA '2' Market - Sell



29.04.2026 IDA '2' Market - Buy



GR Bidding Zone Weekly Figures

Delivery Day	23.04	24.04	25.04	26.04	27.04	28.04	29.04
		↗ 10%	↘ -30%	↘ -2%	↗ 53%	↘ -12%	↗ 45%
Avg.MCP (€/MWh)	68.40	75.11	52.86	51.81	79.14	69.62	101.24
Max.MCP (€/MWh)	152.52	211.94	183.46	134.70	229.04	155.85	220.05
Min.MCP (€/MWh)	-24.12	-20.00	-52.00	-55.00	-0.83	-25.33	-5.16
		↘ -11%	↘ -20%	↗ 10%	↗ 33%	↘ -17%	↗ 2%
Tot.Vol(GWh)	4.58	4.07	3.24	3.56	4.73	3.91	4.01

Trades by Order Type

Delivery Day		23.04	24.04	25.04	26.04	27.04	28.04	29.04	
Ord Price Type		Sell & Buy Trades in (GWh) per Price Type							(%)
PPT	(S)	0.000	0.000	0.000	0.000	0.000	0.000	0.000	0.00%
HBD	(S)	1.954	1.760	0.793	1.228	1.628	0.892	1.623	80.98%
BLK	(S)	0.000	0.000	0.000	0.000	0.000	0.000	0.000	0.00%
CPL	(S)	0.338	0.274	0.827	0.550	0.736	1.064	0.381	19.02%
PPT	(B)	0.000	0.000	0.000	0.000	0.000	0.000	0.000	0.00%
HBD	(B)	1.160	1.585	1.538	1.507	2.024	1.839	1.229	61.32%
BLK	(B)	0.000	0.000	0.000	0.000	0.000	0.000	0.000	0.00%
CPL	(B)	1.131	0.449	0.082	0.272	0.340	0.118	0.775	38.68%
		Sell & Buy Orders Traded per Price Type							(%)
PPT	(S)	0	0	0	0	0	0	0	0.00%
HBD	(S)	306	384	253	226	390	206	420	100.00%
BLK	(S)	0	0	0	0	0	0	0	0.00%
PPT	(B)	0	0	0	0	0	0	0	0.00%
HBD	(B)	283	425	283	520	740	512	512	100.00%
BLK	(B)	0	0	0	0	0	0	0	0.00%

- MCP** Market Clearing Price (€/MWh)
- PPT** Priority Price-Taking
- HBD** Hybrid
- BLK** Block
- CPL** Market Coupling Flow

Trade's Volume Mix

	Sell - MWh	Buy - MWh	
Lignite (23.7%)	476	0	(0.0%)
Crete Conv. (0.0%)	0	0	(0.0%)
Gas (6.5%)	131	71	(3.5%)
Hydro (6.1%)	122	0	(0.0%)
Imports (19.0%)	381		
RES (34.0%)	682	716	(35.7%)
Crete RES (0.0%)	0	0	(0.0%)
BESS (0.6%)	12	38	(1.9%)
HV Load (0.1%)	3	5	(0.2%)
MV Load (4.0%)	81	84	(4.2%)
LV Load (5.8%)	116	316	(15.7%)
Crete Load (0.0%)	0	0	(0.0%)
Pumping (0.0%)	0	0	(0.0%)
Exports		775	(38.7%)
Sys.Losses (0.0%)	0	0	(0.0%)
D/R Load (0.0%)	0	0	(0.0%)

