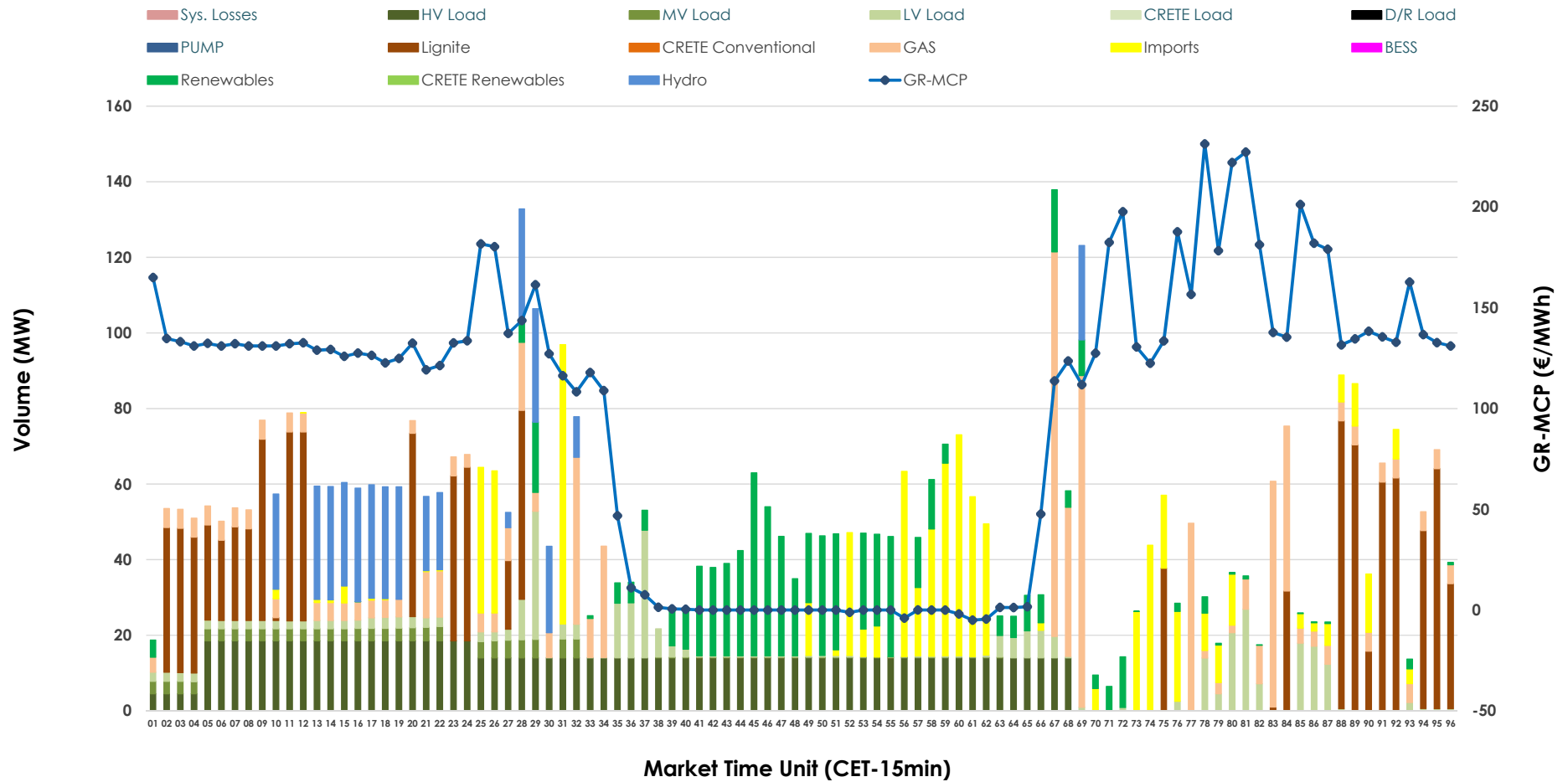


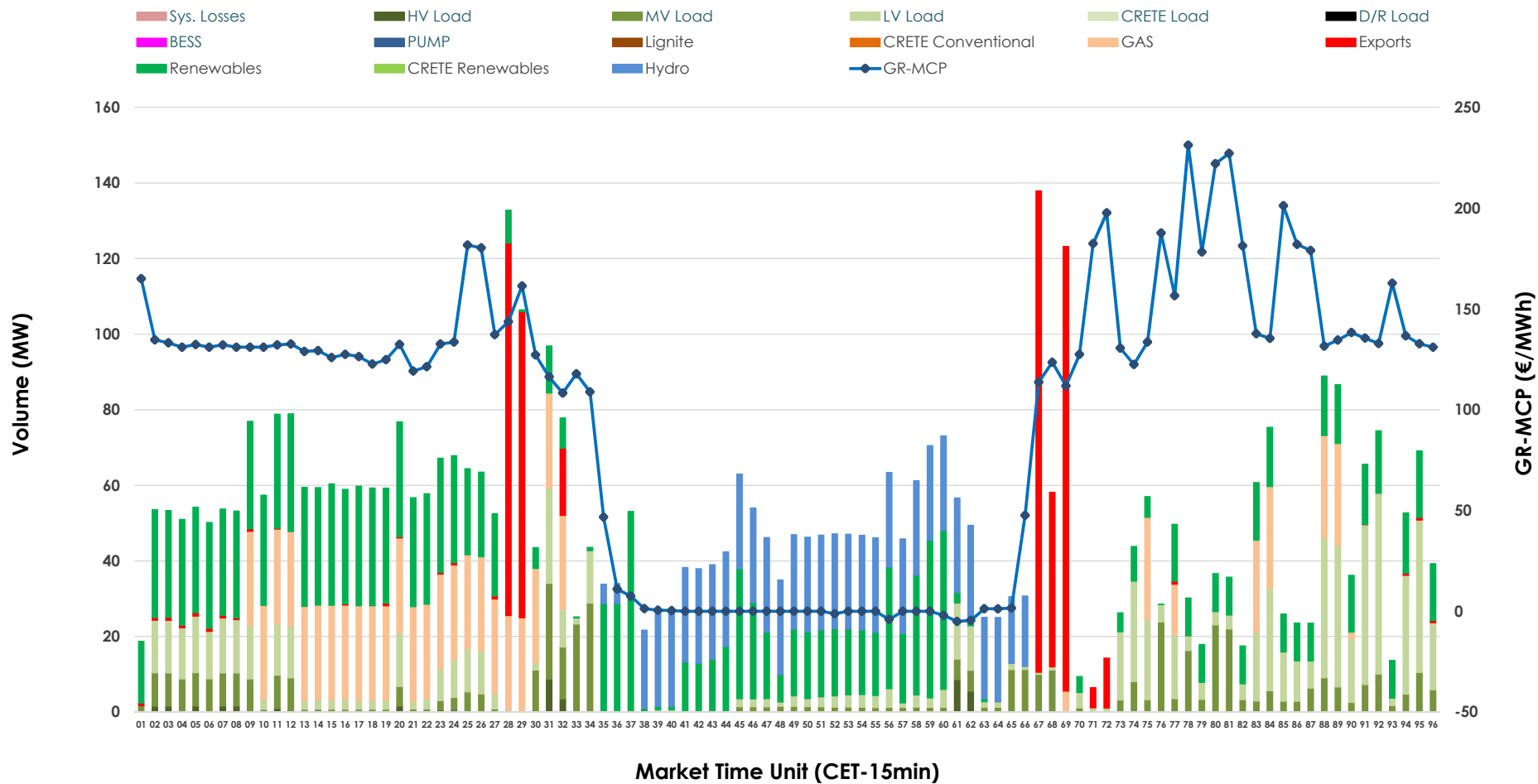


# IDA '1' Market Outlook

29.04.2026 IDA '1' Market - Sell



### 29.04.2026 IDA '1' Market - Buy



### GR Bidding Zone Weekly Figures

Delivery Day	23.04	24.04	25.04	26.04	27.04	28.04	29.04
	↓ -52%	↑ 47%	↘ -30%	↘ -14%	↑ 63%	↘ -5%	↗ 32%
<b>Avg.MCP (€/MWh)</b>	53.67	78.96	55.00	47.33	77.34	73.58	97.14
<b>Max.MCP (€/MWh)</b>	203.10	230.91	186.00	137.70	218.32	191.45	231.24
<b>Min.MCP (€/MWh)</b>	-35.01	-16.96	-49.00	-50.00	-12.00	-25.96	-5.00
	↑ 159%	↓ -56%	↑ 39%	↓ -48%	↗ 11%	↘ -16%	↘ -4%
<b>Tot.Vol(GWh)</b>	8.74	3.84	5.36	2.77	3.08	2.60	2.48

### Trades by Order Type

Delivery Day		23.04	24.04	25.04	26.04	27.04	28.04	29.04	
<b>Ord Price Type</b>		<b>Sell &amp; Buy Trades in (GWh) per Price Type</b>							<b>(%)</b>
<b>PPT</b>	(S)	0.000	0.000	0.000	0.000	0.000	0.000	0.000	0.00%
<b>HBD</b>	(S)	4.351	1.594	1.972	0.849	1.230	1.114	1.061	85.46%
<b>BLK</b>	(S)	0.000	0.000	0.000	0.000	0.000	0.000	0.000	0.00%
<b>CPL</b>	(S)	0.018	0.327	0.709	0.535	0.309	0.185	0.181	14.54%
<b>PPT</b>	(B)	0.000	0.000	0.000	0.000	0.000	0.000	0.000	0.00%
<b>HBD</b>	(B)	2.662	1.801	2.511	1.314	1.192	0.953	1.112	89.54%
<b>BLK</b>	(B)	0.000	0.000	0.000	0.000	0.000	0.000	0.000	0.00%
<b>CPL</b>	(B)	1.708	0.120	0.169	0.070	0.347	0.346	0.130	10.46%
		<b>Sell &amp; Buy Orders Traded per Price Type</b>							<b>(%)</b>
<b>PPT</b>	(S)	0	0	0	0	0	0	0	0.00%
<b>HBD</b>	(S)	62	294	313	288	117	383	305	100.00%
<b>BLK</b>	(S)	0	0	0	0	0	0	0	0.00%
<b>PPT</b>	(B)	0	0	0	0	0	0	0	0.00%
<b>HBD</b>	(B)	1056	716	640	648	576	651	630	100.00%
<b>BLK</b>	(B)	0	0	0	0	0	0	0	0.00%

- MCP** Market Clearing Price (€/MWh)
- PPT** Priority Price-Taking
- HBD** Hybrid
- BLK** Block
- CPL** Market Coupling Flow

### Trade's Volume Mix

	Sell - MWh	Buy - MWh	
<b>Lignite</b> (21.4%)	265	0	(0.0%)
<b>Crete Conv.</b> (0.0%)	0	0	(0.0%)
<b>Gas</b> (14.6%)	181	188	(15.2%)
<b>Hydro</b> (7.9%)	99	178	(14.3%)
<b>Imports</b> (14.5%)	181		
<b>RES</b> (11.9%)	148	409	(32.9%)
<b>Crete RES</b> (0.0%)	0	0	(0.0%)
<b>BESS</b> (0.0%)	0	0	(0.0%)
<b>HV Load</b> (20.2%)	251	10	(0.8%)
<b>MV Load</b> (2.3%)	28	123	(9.9%)
<b>LV Load</b> (7.2%)	89	205	(16.5%)
<b>Crete Load</b> (0.0%)	0	0	(0.0%)
<b>Pumping</b> (0.0%)	0	0	(0.0%)
<b>Exports</b>		130	(10.5%)
<b>Sys.Losses</b> (0.0%)	0	0	(0.0%)
<b>D/R Load</b> (0.0%)	0	0	(0.0%)

