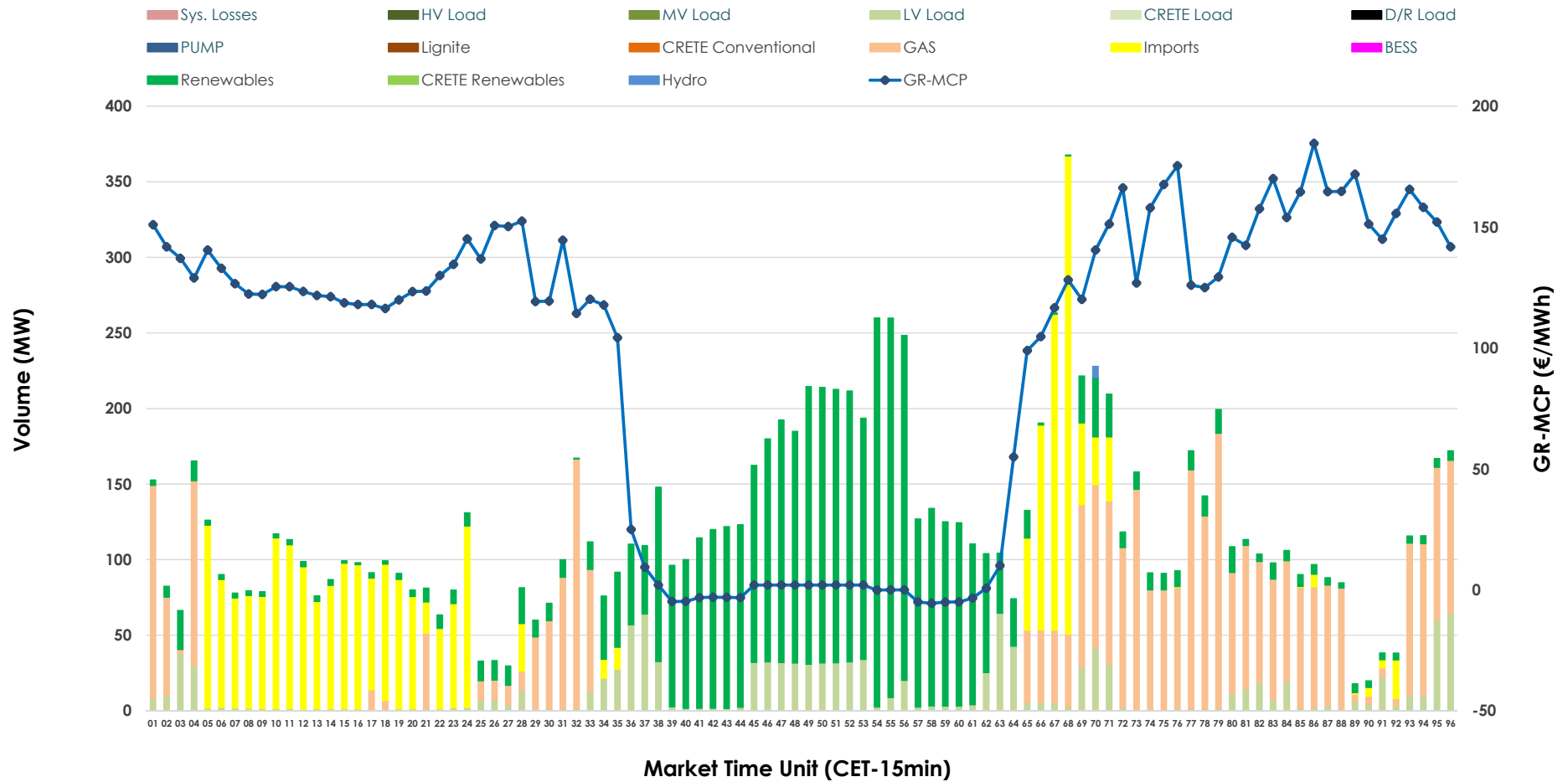


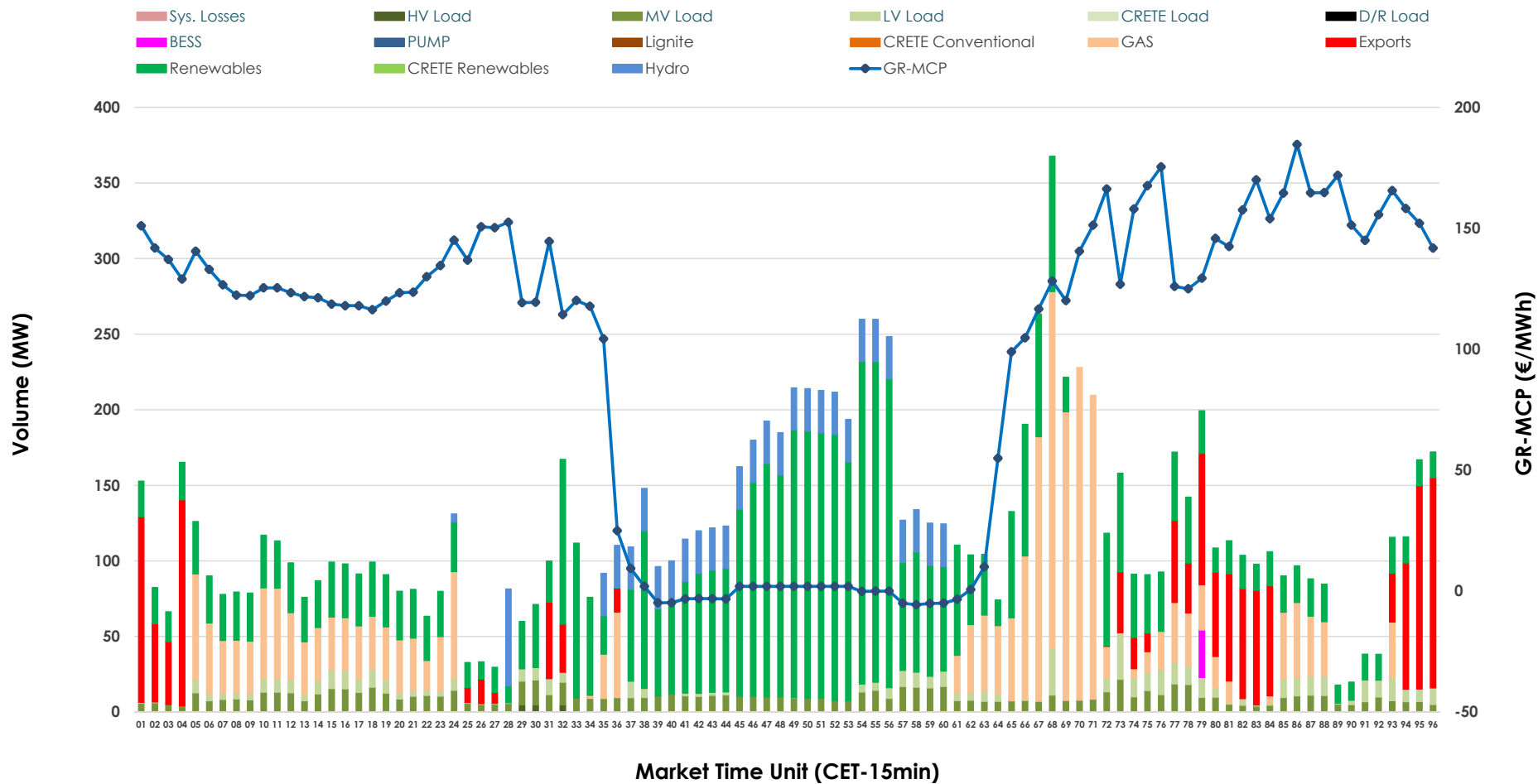


IDA '1' Market Outlook

01.06.2026 IDA '1' Market - Sell



01.06.2026 IDA '1' Market - Buy



GR Bidding Zone Weekly Figures

Delivery Day	26.05	27.05	28.05	29.05	30.05	31.05	01.06
	↗ 14%	↗ 15%	↘ -5%	↘ -10%	↗ 9%	↘ -4%	↗ 13%
Avg.MCP (€/MWh)	82.27	94.60	89.80	81.26	88.77	85.50	96.84
Max.MCP (€/MWh)	206.92	277.17	198.13	166.41	210.27	159.21	184.62
Min.MCP (€/MWh)	-12.94	-7.68	-5.86	-8.93	-9.10	-2.01	-5.61
	↗ 32%	↘ -15%	↕ 98%	↗ 6%	↘ -25%	↗ 22%	↘ -4%
Tot.Vol(GWh)	3.80	3.24	6.41	6.77	5.07	6.19	5.96

Trades by Order Type

Delivery Day		26.05	27.05	28.05	29.05	30.05	31.05	01.06	
Ord Price Type		Sell & Buy Trades in (GWh) per Price Type							(%)
PPT	(S)	0.000	0.000	0.000	0.000	0.000	0.000	0.000	0.00%
HBD	(S)	1.798	1.453	2.903	3.383	2.016	1.792	2.320	77.91%
BLK	(S)	0.000	0.000	0.000	0.000	0.000	0.000	0.000	0.00%
CPL	(S)	0.102	0.169	0.303	0.000	0.518	1.305	0.658	22.09%
PPT	(B)	0.000	0.000	0.000	0.000	0.000	0.000	0.000	0.00%
HBD	(B)	1.517	1.608	2.224	3.383	2.118	2.374	2.610	87.66%
BLK	(B)	0.000	0.000	0.000	0.000	0.000	0.000	0.000	0.00%
CPL	(B)	0.383	0.013	0.983	0.000	0.415	0.722	0.367	12.34%
		Sell & Buy Orders Traded per Price Type							(%)
PPT	(S)	0	0	0	0	0	0	0	0.00%
HBD	(S)	349	306	371	267	305	243	201	100.00%
BLK	(S)	0	0	0	0	0	0	0	0.00%
PPT	(B)	0	0	0	0	0	0	0	0.00%
HBD	(B)	647	579	643	746	771	950	707	100.00%
BLK	(B)	0	0	0	0	0	0	0	0.00%

- MCP** Market Clearing Price (€/MWh)
- PPT** Priority Price-Taking
- HBD** Hybrid
- BLK** Block
- CPL** Market Coupling Flow

Trade's Volume Mix

	Sell - MWh	Buy - MWh	
Lignite (0.0%)	0	0	(0.0%)
Crete Conv. (0.0%)	0	0	(0.0%)
Gas (29.6%)	882	668	(22.4%)
Hydro (0.1%)	2	199	(6.7%)
Imports (22.1%)	658		
RES (37.9%)	1,128	1,346	(45.2%)
Crete RES (0.0%)	0	0	(0.0%)
BESS (0.0%)	0	8	(0.3%)
HV Load (0.0%)	0	4	(0.1%)
MV Load (0.0%)	0	244	(8.2%)
LV Load (10.4%)	308	142	(4.8%)
Crete Load (0.0%)	0	0	(0.0%)
Pumping (0.0%)	0	0	(0.0%)
Exports		367	(12.3%)
Sys.Losses (0.0%)	0	0	(0.0%)
D/R Load (0.0%)	0	0	(0.0%)

